

# MOUNT HAWTHORN UNITING CHURCH, MOUNT HAWTHORN



PLACE INFORMATION	
<b>Place name</b>	Mount Hawthorn Uniting Church
<b>Other names</b>	Mount Hawthorn Presbyterian Church Mount Hawthorn Uniting Church & Hall
<b>Place type</b>	Individual building or group

HERITAGE LISTING	
<b>inHerit ID:</b>	2210
<b>State Heritage Register:</b>	
<b>Other Listing:</b>	Municipal Inventory Adopted 13 Nov 1995 Uniting Church Inventory 1 Oct 1996

SITE LOCATION	
<b>Street address</b>	115 Kalgoorlie St
<b>Locality</b>	Mount Hawthorn
<b>Survey</b>	LOT: 1 - 3 STR: 76715
<b>Vol/folio</b>	2933/203 - 205
<b>Reserve</b>	

SIGNIFICANCE	
<b>Level of significance</b>	<b>Moderate</b> Contributes to the heritage of the locality. Has some altered or modified elements, not necessarily detracting from the overall significance of the place.
<b>Management category</b>	<b>Category 3</b> Conservation of the place is desirable. Any alterations or extensions should reinforce the significance of the place and retain original fabric where feasible.
<b>Statement of significance</b>	<p>This place has aesthetic value as a simple demonstration of the Inter War Gothic style executed in brick and tile.</p> <p>The place has historic value for its association with the establishment and development of Mount Hawthorn in the first half of the 20th century.</p> <p>The place has historic value for its association with the Presbyterian and the later Uniting Church and the provision of services to the Mount Hawthorn, and wider Perth community.</p> <p>The place has social value for its longevity in the streetscape and its contribution to the community sense of place.</p> <p>The place has social value for the community, many of whom have used these buildings for religious and social activities.</p>

### PLACE USE

<b>Original use</b>	Religious: Church, Cathedral or Chapel
<b>Current use</b>	Residential: Single storey residence
<b>Other use</b>	

### CONSTRUCTION DETAILS

<b>Construction date</b>	1937
<b>Walls</b>	Cement block Fibre cement sheets
<b>Roof</b>	Terracotta Tile
<b>Architectural Style</b>	Inter War Gothic
<b>Physical description</b>	<p>The modest single storey church is constructed of concrete blocks. It has a gabled roof with a simple gable roofed entrance porch facing the street. The entrance to the porch is flanked by a pair of Tuscan columns.</p> <p>The gables are timbered with sheeting infill, although the main gable also incorporates a circular/florette shaped stained glass window.</p> <p>The small timber windows are rectangular but the lights are shaped as gothic-styled arched windows. Central on the grassed site it is setback from the street frontage.</p>
<b>Condition</b>	Good
<b>Integrity</b>	High
<b>Authenticity</b>	Moderate

### HISTORICAL INFORMATION

Kalgoorlie Street was part of what was referred to as the Leederville Extension Estate. Residential lots were released for sale in about 1896, but the area was slow to develop.

The street was listed in Wise's Post Office Directories in 1914 for the first time but there was no houses built. In 1905 there was one resident listed in Kalgoorlie Street, George Belstead and in 1915 there were seven. The street was about two thirds built out by 1937, as development spread westward across the suburb and in 1949 there appeared to be only three of four empty blocks.

The Mount Hawthorn Presbyterian Church first held services in the Kindergarten in Woodstock Street. This was part of an outreach from the North Perth congregation.

Plans for the construction of a church in Mount Hawthorn began with the manufacture of cement bricks, many of which were made by the women and retired members of the congregation.

The site of the new church was chosen to be close to key services including Menzies Park and transport (trams on Scarborough Beach Road) and to Mount Hawthorn Primary School on the opposite side of the main road.

The foundation stone for the building was laid on 3rd April 1937 by Right Rev George Tulloch. In the ceremony the contributions of members of the local community was acknowledged. Mr George for his construction of the foundations and Mrs Rule for building up the Sunday School and church community in Mount Hawthorn. Throughout 1937 the church was built by volunteers, with approximately 5000 hours spent on the construction.

The church was opened in February 1938. Jurjen Freese, who worked in the building industry and was also a member of the congregation, helped with the installation of the windows and doors.

The double lot on the south side of the new church was occupied by a wood yard when the church was built.

**HISTORICAL INFORMATION**

The rectangular section of the church at the rear, which formed the building into an L-shape, appears to have been built in the early 1960s.

On 22 June 1977, the Presbyterian, Congregational and Methodist Church parishes amalgamated to form the Uniting Church to become the third largest Christian denomination in Australia.

In December 2003 Mount Hawthorn's Uniting Church made history when it joined forces with the Mount Hawthorn Anglican Parish. The new group occupied a complex on Green Street which included a church, community hall and meeting rooms and the Kalgoorlie Street building was left vacant and subsequently converted for use as a residence. The two storey building to the north of the lot (117) was built c2018 and the properties form part of a strata plan development. The original form and function of the church can still be clearly determined in the main elevation.

**HISTORICAL INFORMATION**

<b>Historic theme</b>	Cultural Life: Religion Peopling WA: Demographic Development	
<b>Associations</b>		
<b>Sources</b>	Municipal Heritage Inventory 2006. Landgate Aerial photographs 1953-2024. The West Australian, 5 April 1937, p. 16; 28 February 1938, p. 18.	

**ADDITIONAL PHOTOGRAPHS**



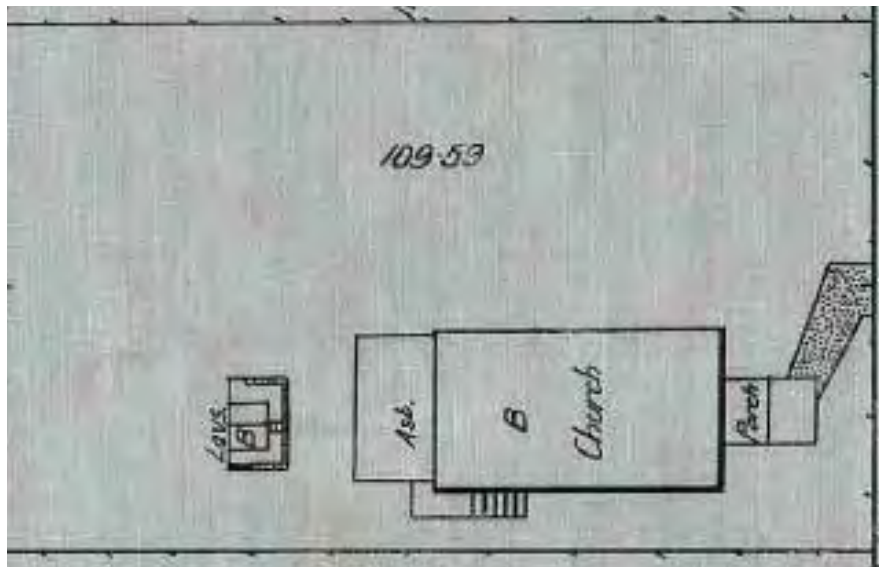
ARCHIVAL IMAGES



*Building the Church, 1937. City of Vincent image 1012921*



*Presbyterian Church, c1940. City of Vincent image 1012961*



*Sewerage Plan, 1937. Courtesy SROWA Sheet 286.*