

BULWER STREET GROUP, WEST PERTH



PLACE INFORMATION

Place name	Bulwer Street Group
Other names	
Place type	Individual building or group

HERITAGE LISTING

inHerit ID:	27585
State Heritage Register:	
Other Listing:	Municipal Inventory 21 Nov 2006 (348 Bulwer St)

SITE LOCATION

Street address	344, 348, 350, 354 Bulwer St
Locality	West Perth
Survey	Various
Vol/folio	Various
Reserve	—

SIGNIFICANCE

Level of significance	<p>Moderate</p> <p>Contributes to the heritage of the locality. Has some altered or modified elements, not necessarily detracting from the overall significance of the item.</p>
Management category	<p>Category 3</p> <p>Conservation of the place is desirable. Any alterations or extensions should reinforce the significance of the place and retain original fabric where feasible.</p>
Statement of significance	<p>The group of houses are a good, largely intact demonstration of brick homes of the Federation Bungalow and Inter War Californian Bungalow style residences executed in brick.</p> <p>As a group the residences make a contribution to the streetscape for their demonstration of the settlement of the area.</p> <p>The group of houses demonstrate the development of this portion of West Perth in the early 20th century for skilled and professional workers and their families.</p> <p>The scale and form of the houses demonstrate typical houses that were built in the early 20th and late 19th century for skilled and professional workers and their families.</p>

PLACE USE	
Original use	Residential: Flats/Apartment Block
Current use	Residential: Flats/Apartment Block
Other use	

CONSTRUCTION DETAILS	
Construction date	1938
Walls	Painted Brick Brick
Roof	Terracotta tiles Corrugated metal sheeting
Architectural Style	Federation Bungalow Inter War California Bungalow
Physical description	<p>This group of four houses on the north side of Bulwer Street are located on the west side of Eden Street. Beyond the four houses to the west are additional original residences with variation of scale and setback.</p> <p>No 344 is a single storey tuck pointed brick and rendered corrugated steel roofed residence. It is designed in the Federation Bungalow style. The place has a gabled roof thrust bay and bull nosed roof verandah supported on square posts. The gabled roof is decoratively treated with timbering, rough cast render and timber corbels. It has single pane double hung sash windows and its original door and hopper light. The walls are tuck-pointed brick and render.</p> <p>No 348 is a single storey, tuck pointed brick, rendered brick and tiled roofed house. It is designed in the Inter-War California Bungalow style. It has a skillion-roofed verandah on rendered brick piers. The verandah is supported on twin timber posts set on piers. It has a tiled gable roof with rough cast rendered chimneys and terracotta chimney pots.</p>

CONSTRUCTION DETAILS	
Physical description	<p>No 350 is a single storey, tuck pointed brick, rendered brick and tiled roof house roofed house. It is designed in the Inter-War California Bungalow style. It has a skillion-roofed verandah which is supported on twin timber posts on rendered brick piers. The verandah extends along the front and east sides of the house, and the western side has been filled in. It has a symmetrical front elevation with a small pane double hung sash window in the centre. It has tuck-pointed brickwork and roughcast rendered bands. The entrance is off the east verandah.</p> <p>No 354 is a single storey tuck pointed brick and rendered Decramastic tiled roofed residence. It is designed in the Inter-War California Bungalow style. The place features a gabled roof thrust bay and a skillion roof verandah supported on square posts with post brackets and curved entrance arch. The gable has been simplified as a repair strategy in recent times. It has leadlight casement windows, French doors and a glazed and panelled front door with side and hopper lights. The walls are tuck-pointed brick with render sills.</p>
Condition	Good
Integrity	High
Authenticity	Moderate

HISTORICAL INFORMATION

This group of houses demonstrate the development of this portion of West Perth in the late 19th and early 20th century. The people who settled here were generally skilled tradespeople or professionals and their families.

No 344 Bulwer Street was built on the centre of three lots, part of Y20, on the corner of Eden (Bailey) Street. City of Perth Health Inspector, Cornelius Begley (c1855-1930) is recorded as the occupier in 1898 and remained there until at least 1925.

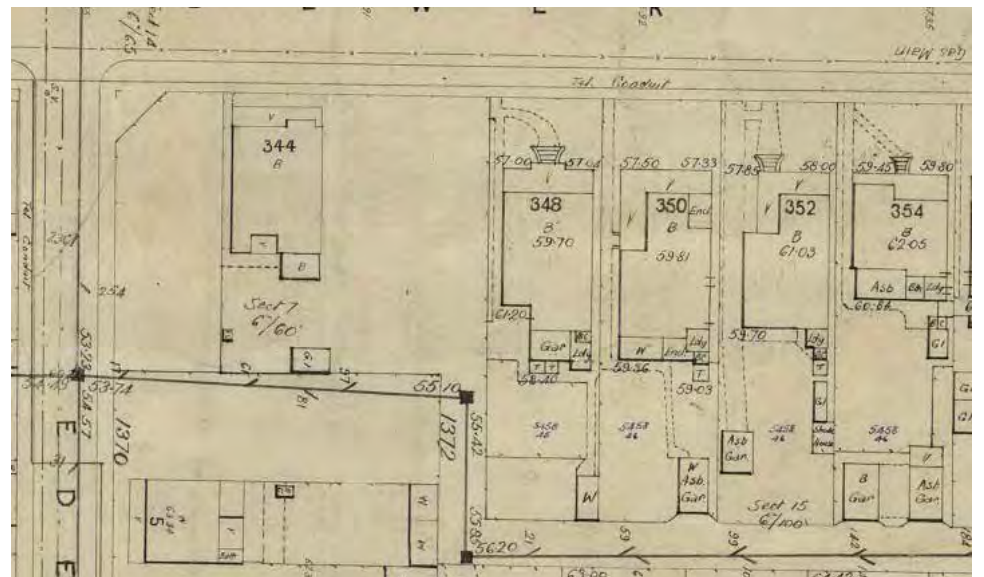
No's 348, 350, 354 and 356 are four of six houses built on the Bulwer Street frontage of Lot Y278. They have a deeper front setback than 344 and were built in the Inter-War period in 1919 and 1920. 348 Bulwer Street was built in 1919 and the first occupant was railway worker Rueben Colley. 350, 354 and 356 Bulwer Street were all built in 1920. 350 was occupied by civil servant John Alexander Williamson (c1887-1971); 354 by Edward Middleton (c1862-1927) and his wife Catherine; and 356 by Amos Adams (1894-1964).

In 1948, part of the verandah to No 350 was filled in on the western side of the house.

Aerial photographs since the mid 20th century indicate that there have been additions and alteration to the rear of the houses and new walls on the front property boundaries. Roof cladding of some of the houses have been changed and updated.

Historic theme	Peopling WA: Demographic Development Cultural Life: Domestic Life	
Associations		
Sources	The Daily News, 1 Feb 1930, p. 2. Landgate Aerial photographs Australian Electoral Rolls. Wises Post Office Directories Municipal Heritage Inventory 2014.	

ADDITIONAL PHOTOGRAPHS



Sewerage Plan, 1952. Courtesy SROWA series 634 cons 4156 item 0087-0087A.