

TWO HOUSES, 1 AND 3 BOUVERIE PL LEEDERVILLE



| PLACE INFORMATION | |
|-------------------|---------------------------------|
| Place name | Two Houses, 1 and 3 Bouverie Pl |
| Other names | |
| Place type | Individual building or group |

| HERITAGE LISTING | |
|--------------------------|-----------------------------------------|
| inHerit ID: | 17971 |
| State Heritage Register: | |
| Other Listing: | Municipal Inventory Adopted 12 Sep 2006 |

| SITE LOCATION | |
|----------------|----------------------------------------|
| Street address | 1 and 3 Bouverie Pl |
| Locality | Leederville |
| Survey | LOT: 18 D/P: 1221 LOT: 17 D/P: 1221 |
| Vol/folio | 1800/506 1800/507 |
| Reserve | — |

| SIGNIFICANCE | |
|---------------------------|----------------------------------------------------------------------------------------------------------------------------------------------------------------------------------------------------------------------------------------------------------------------------------------------------------------------------------------------------------------------------------------------------------------------------------------------------------------------------------------------------------|
| Level of significance | <p>Moderate</p> <p>Contributes to the heritage of the locality. Has some altered or modified elements, not necessarily detracting from the overall significance of the place.</p> |
| Management category | <p>Category 3</p> <p>Conservation of the place is highly desirable. Any alterations or extensions should reinforce the significance of the place.</p> |
| Statement of significance | <p>These two cottages have aesthetic value as good intact examples of the Federation Queen Anne style residences executed in brick.</p> <p>The place reflects the expansion and development of residential buildings on the city fringes during the rapid population increase of 1890's gold boom and the early years of the twentieth century.</p> <p>The place is valued by the community for the continuity of its presence in the streetscape which contributes to the community sense of place.</p> |

| PLACE USE | |
|---------------------|--------------------------------------|
| Original use | Residential: Single Storey Residence |
| Current use | Residential: Single Storey Residence |
| Other use | |

| CONSTRUCTION DETAILS | |
|-----------------------------|---------------------------------------------------------------------------------------------------------------------------------------------------------------------------------------------------------------------------------------------------------------------------------------------------------------------------------------------------------------------------------------------------------------------------------------------------------------------------------------------------------------------------------------------------------------------------------------------------------------------------------------|
| Construction date | c1912 |
| Walls | Painted Brick |
| Roof | Corrugated sheet metal |
| Architectural Style | Federation Queen Anne |
| Physical description | <p>Both places are of the same design and detail. They are single storey residences with a full width bullnose front verandah, hipped gambrel roof, symmetrical frontage with central front door (with sidelights and fanlights) flanked by a double hung window each side. The windows also feature sidelights.</p> <p>The verandahs are supported by turned timber posts and have a vertical timber detailed valance and decorative fretwork brackets (No 3).</p> <p>The painted chimneys are corbelled. Both places have low brick (painted) walls and pickets. The gardens are mature and mostly obscure views of the places.</p> |
| Condition | Good |
| Integrity | High |
| Authenticity | High |

HISTORICAL INFORMATION

Bouverie Place was created as part of the Leeder Estate subdivisions, which began in 1891 with the sale of 19 blocks of land. This area was part of a further subdivision of lots (between Anzac Road and Bourke Street) into garden lots ranging from two to ten acres. It is possible that Bouverie Street was named after Edward Bouverie Pusey (his father took on the name 'Pusey' upon gaining an inheritance. Edward was one of the leaders of the British Oxford Movement.

The street is one of the short thoroughfares off Oxford Street which initially led into the swampy land on the eastern side of Lake Monger. There were Chinese market gardens at the end of Bouverie Place up to the 1920s. Chinese market gardeners, Chong You and Sue Wing were listed there in 1910. These men generally worked in partnerships or as group and many were relatives. They worked the soil by hand, using makeshift tools and traditional Chinese methods. The watering was done in the traditional way by walking up and down between the rows of vegetables with a pole across their shoulders and a bucket of water on each end.

The house at No. 5 appears on the 1900 PWD sewerage plans. Numbers 1 and 3 are listed in the 1915 Post Office Directory but not in 1910. There were a number of long-term residents in Bouverie Place. The Horsley's are listed at No. 7 from at least 1915 to 1949 (by then Mrs Bridget Horsley) and the Guelfi family at No. 6 was in residence from 1925 to at least 1949 (by then Mrs Susannah Guelfi). In 1949 Robert Stace was in residence at No. 1 and Ernest Marsh at No.3.

Aerial photographs from the mid 20th century onwards indicate that the houses at Nos. 1 and 3 underwent renovations in the late 1980s with extensions being added to the backs of the buildings. No. 1 had further remodelling of the back of the house in 2003. Both buildings have remained largely unchanged since then.

| HISTORICAL INFORMATION | |
|------------------------|-----------------------------------------------------------------------------|
| Historic theme | Cultural Life: Domestic Life Peopling WA: Demographic Development |
| Associations | |
| Sources | Municipal Heritage Inventory 2006 Landgate Aerial photographs 1953-2024. |

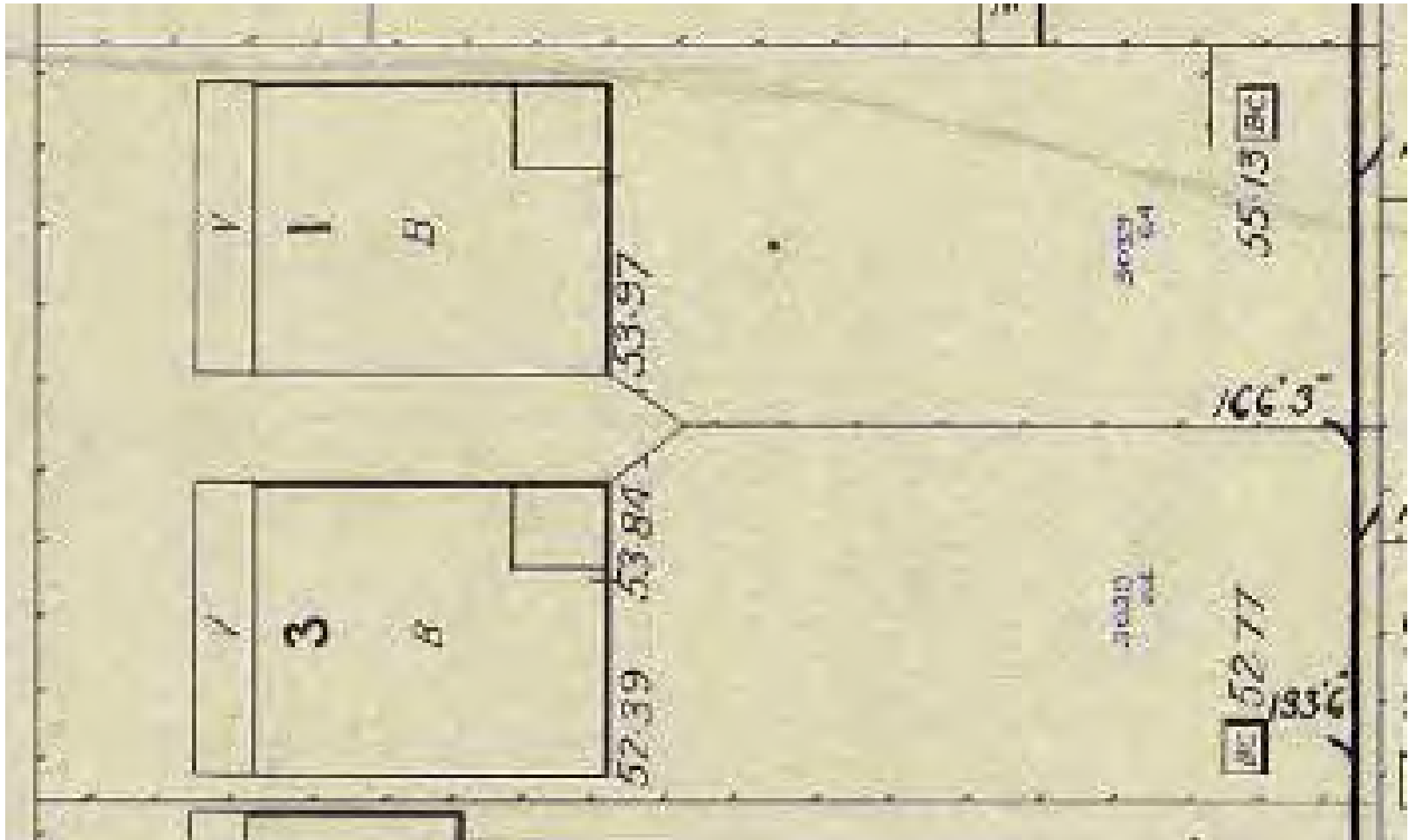
ADDITIONAL PHOTOGRAPHS



ADDITIONAL PHOTOGRAPHS



ARCHIVAL IMAGES



Sewerage Plan n.d. Courtesy SROWA Sheet 158.