

MONASTERY OF OUR LADY OF THE SACRED HEART (FMR), HIGHGATE



PLACE INFORMATION	
Place name	Monastery of Our Lady of the Sacred Heart
Other names	Sacred Heart Catholic Group, Highgate Sacred Heart Primary School Sacred Heart College
Place type	Individual building or group

HERITAGE LISTING	
inHerit ID:	2181, 2182, 2183, 23930
State Heritage Register:	28 August 2001
Other Listing:	Municipal Inventory Adopted 01 Jul 1998

SITE LOCATION	
Street address	40 - 42 Mary St
Locality	Highgate
Survey	LOT: 64 D/P: 42775
Vol/folio	2794/497
Reserve	—

SIGNIFICANCE	
Level of significance	<p>Exceptional</p> <p>Essential to the heritage of the area. Rare or outstanding example. Consider for nomination for State Register of Heritage Places if not already included.</p>
Management category	<p>Category 1</p> <p>The place should be retained and conserved. Any alterations or extensions should reinforce the significance of the place and be in accordance with a Conservation Plan if one is in place.</p>
Statement of significance	<p>The buildings, grounds and boundary walls of the place collectively form an important precinct of ecclesiastical buildings dating from the turn of the twentieth century.</p> <p>The place housed the Order of Our Lady of the Missions' first Australian branch and school, established at the site in 1897, and illustrates the Order's commitment to the education of children in Western Australia and to other forms of pastoral care.</p> <p>The place was founded as a result of efforts from the late 1890s by local Catholics to establish a Catholic Church and School in the area as the State's population boomed, and is representative of the development of Catholic Education in Western Australia.</p> <p>The Monastery of Our Lady of the Sacred Heart is an excellent example of a large, well composed convent school building featuring elements from the Federation Free and Inter-War Gothic styles;</p> <p>Sacred Heart Catholic Church is an excellent example of a substantial stone church in the Federation Gothic style.</p> <p>The place, including the simple, formally planned garden entry to the convent and Moreton Bay figs in the Mary Street forecourt of the Church, is a significant streetscape element on Mary and Harold Streets in Highgate.</p>

SIGNIFICANCE	
Statement of significance	The place is representative of a convent and school built c. 1900 and illustrates the principal characteristics and planning of this type of ecclesiastical complex.
	Sacred Heart Catholic Church and Sacred Heart Primary School were designed by prominent architect Richard Dennehy, the original Convent and School buildings were designed by Edgar Henderson, and the 1923, 1933 and 1937 additions to the Convent and School, the 1954 extensions to the Church, and the 1938 Hall were designed by his son Edgar Le B Henderson.
	The Sacred Heart Primary School (1914) is the only known example in the State of a parish owned school located in the inner city, which dates from the early twentieth century and still functions for its intended purpose.
	The place is highly valued by the school community, past and present students and teachers, and the Sacred Heart parish.

PLACE USE	
Original use	Religious: Church, Cathedral or Chapel Religious: Monastery Educational: Combined School
Current use	Religious: Church, Cathedral or Chapel Educational: Combined School
Other use	
CONSTRUCTION DETAILS	
Construction date	1899; 1923; 1933; 1937; 1971; 1977/78; 1987
Walls	Brick
Roof	Terracotta Tile Corrugated Metal sheeting
Architectural Style	Inter War Gothic
Condition	Good
Integrity	High
Authenticity	High

CONSTRUCTION DETAILS	
Physical description	<p>The Monastery of Our Lady of the Sacred Heart is located within a complex site with various elements of heritage significance. Refer to the Sacred Heart Catholic Group, Highgate for details.</p>
	<p>The following description has been drawn from the assessment documentation for the Group prepared in 2012. Further details are available in that document.</p>
	<p>The former monastery and the adjacent school have evolved over a period of time resulting in a complex composition of buildings of diverse style and construction. The former monastery is referred to as the Main Block in the documentation.</p>
	<p>The Main Block consists of six interconnected wings, three of which are predominantly used by the Catholic Pastoral Centre and three that are used by the Sacred Heart Primary School. The main entry to the Main Block is set in the centre of the front façade of the central wing, the Administration Wing. The Administration Wing is a rectangular block and its long axis is orientated east west, parallel with Mary Street. To the west of the Administration Wing is the three-storey Chapel/Refectory Wing and to the east is the two-storey Classroom Wing. The long axis of the Chapel/Refectory Wing and the Classroom Wing both run north-south and together with the Administration Wing they enclose the Entry Courtyard. The Classroom Wing is occupied by the school and is entered from the school grounds in the east as well as the Entry Courtyard. To the west of the Chapel/Refectory Wing is the three-storey Accommodation Wing and directly behind this is the four-storey Auxiliary Wing. The Service Wing runs parallel with the Administration Wing. A link between the Service Wing and the Administration Wing bisects the space between the two buildings and forms two small courtyards.</p>

CONSTRUCTION DETAILS	
Physical description	<p>The three-storey Accommodation Wing (1923; 1933) is roughly rectangular shaped in plan with a projecting wing at the rear and forms the most westerly wing of the complex. This face brick building with rendered window dressings and detail has been composed in the Inter War Gothic Style (1915 - 1940). A three-storey masonry colonnade with segmental pointed arches inspired by Tudor style architecture dominates the south façade. The colonnade is divided into three bays and it has an arcade at ground, first and second floors. Decorative corbels spring from the sides of the columns of the upper arcade to support the concrete beam that supports the second floor balcony. The columns and arch heads are rendered. The first and second floors have solid masonry balustrades with rendered decoration. The floors are concrete.</p>
	<p>The four-storey Auxiliary Wing (1937) is rectangular in plan and is attached to the rear (north) of the Accommodation Wing (1923; 1933). Initially, it contained a variety of service rooms and other auxiliary uses. This wing is now used as meeting rooms for associated Catholic community and service groups.</p>
	<p>This building is a utilitarian structure of the early twentieth century; the design has not been influenced by any particular style. The Auxiliary Wing (1937) is an unpainted face brick building with simple rendered window sills and terracotta wall vents. The roof is a low-pitched, corrugated iron clad, skillion roof with no eaves. The windows are generally 4 pane double hung sashes except for four 10 pane casement sashes that are located on the ground floor of the east façade, and three 2 pane double hung sashes that are located directly above the casements. There is a single-storey brick and corrugated steel hipped roofed building connected at the northern end.</p>

CONSTRUCTION DETAILS

This building contains male and female toilets. Air conditioning equipment is housed on a platform on the roof. There is an external open store connected to the east of this building.

The three-storey Chapel/Refectory Wing (1923; 1933) is roughly rectangular in plan and forms the mid-western wing of the Main Block. This face brick building with rendered banding and detail has been composed in the Inter War Gothic Style. The main body of this building is a three-storey rectangular volume. It has a steeply pitched terracotta tile roof that terminates at its north end against a parapeted gable that is surmounted by a masonry cross, and at its southern end with a hipped roof with a gambrel with a timber roof vent. On the east and west sides of the building there are narrow eaves enclosed with timber battens. The section of this rectangular volume that protrudes south beyond the rest of the complex is divided into two bays. Buttresses, each with three rendered offsets, define these bays. On the first floor of each of these bays is a large perpendicular style tracery window with rendered dressings and on the floor above is a simple lancet window with a double hung sash and fixed fanlight. In the south wall of this rectangular volume there are three lancet windows set at second floor level.

Physical description

The Administration Wing (1899), a two-storey rectangular building, forms the southern wing of the Main Block. This face brick building with rendered banding and detail has been composed in the Federation Free Classical Style. The front façade has a two-storey arcade with round arches and a balustrade of masonry balusters. In the centre of the façade is a projecting entry bay that has a flat arch at ground level and a room above with two narrow windows flanking a niche with a statue of the Virgin and Child. A pediment that is flanked by bartisans and topped by a cross surmounts the central bay. The main entry door has a stained glass panel as well as stained glass sidelights and fanlight. The other windows in this façade are simple double hung sash windows.

CONSTRUCTION DETAILS

The corrugated iron roof is partly concealed behind a parapet with balusters which match the balustrade of the balcony below. The roof has a decorative timber bellcote with a shingle roof and several metal, vented gablets. The brick chimneys have decorative corbelled caps and are unpainted.

The rear (north) wall of the Administration Wing (1899) is purely utilitarian in composition and construction. The walls are unpainted face brickwork laid in Flemish bond and only the simple windowsills are rendered. Unlike the front façade, there is no parapet concealing the roof but rather a simple eaves detail with timber battens fixed to the underside and an ogee profile gutter. All windows are timber double hung sash windows with metal wall vents set in the brickwork above them. This wall forms the south wall of the two courtyards formed in the space between the Administration Wing (1899) and the Service Wing (1899). The two-storey Service Wing (1899) is rectangular shaped in plan and forms the north wall of the internal service courtyard. This courtyard is bounded on the east by the Classroom Wing (1899; 1923), on the south by the Administration Wing (1899), and on the west by the Chapel/Refectory Wing (1923). This wing was modified in the 2003 major works program. This building is a utilitarian structure of the early twentieth century; the design has not been influenced by any particular style. It would appear that this building has evolved over time with the timber framed upper floor extension being constructed some time after the brick part of the building. The two-storey Classroom Wing (1899; 1923) is rectangular in plan and forms the eastern wing of the Main Block. The front (south) section of the wing is a later addition.

Physical description

The walls of the building are of stretcher bond brickwork construction with a rusticated limestone plinth. The steeply pitched corrugated iron roof terminates at its north and south ends against parapeted gables. The apex of the south gable is capped by a steel cross

HISTORICAL INFORMATION

The Sacred Heart Catholic Group, Highgate comprises the Sacred Heart Catholic Church, Sacred Heart Church Hall, the Monastery of Our Lady of the Sacred Heart, Sacred Heart Primary School, forecourt and Moreton Bay figs to the Church, gardens, shelters and boundary walls.

The Sacred Heart Church and the Monastery of Our Lady of the Sacred Heart (fmr) have been described in separate place record forms; Sacred Heart Church (23930) and the Monastery (2182). The following history relates to Monastery of Our Lady of the Sacred Heart.

The establishment of a Roman Catholic presence in Highgate Hill dates from 1891 when Bishop Matthew Gibney supervised the subdivision of the Church's land known as 'Mount Heart Estate'. Located on a prominent rise, the estate comprised of a number of residential lots and was bounded by Mary and Margaret (now Harold) Streets, and Beaufort and Lincoln (now William) Streets. Bishop Gibney identified approximately two acres at the centre of the estate for use as a church and school to serve the growing Catholic population of the developing suburb. The two acres were called 'Alacoque Square' after the Sacred Heart of Jesus, St Margaret Mary Alacoque.

In July 1897, Superior General Mother Mary of the Holy Rosary of the Congregation of Our Lady of Missions visited 'Alacoque Square' where a temporary Church of the Sacred Heart had been erected. The original church building, a timber-framed iron-clad structure always considered temporary, was improved and ornamented by the local Catholic community. When leaving the colony several days later, Mother Mary of the Holy Rosary intimated that she would be accepting the Bishop's proposal to establish a school at the Highgate Hill site.

Five Sisters were chosen from the Order of Our Lady of the Missions at Christchurch, and they opened the Sacred Heart School on 25 October 1897. The branch at Highgate Hill was to be the first established by the Sisters of Our Lady of the Missions in Australia.

HISTORICAL INFORMATION

On 18 September 1898, the foundation stone of the combined school and convent building (Monastery of Our Lady of the Sacred Heart) was finally laid. Approximately 700 to 800 of the laity attended the ceremony including Sir John and Lady Margaret Forrest. Although the construction cost was estimated at £5,000, Sacred Heart School and Convent (Monastery of Our Lady of the Sacred Heart) was built at a cost of approximately £3,000. The money for the construction of the building was raised by the local parish. On 22 January 1899, Sacred Heart School and Convent (Monastery of Our Lady of the Sacred Heart) was opened with the Vicar General officiating over the ceremony and blessing of the building.

The architect of the building Edgar Henderson, of the firm Henderson and Jefferies, also attended the opening. The building was constructed by day labour employed by the Mother Prioress and this work was supervised by builder T. Moloney.

Sacred Heart Convent became the Head House for the Sisters of Our Lady of the Missions for Western Australia, and later Victoria. The various schools at Sacred Heart included a Kindergarten and Primary School for both boys and girls and a High School and Boarding School for girls.

Throughout this period Alacoque Square, the land on which Sacred Heart Catholic Group, Highgate was built, remained in the joint ownership of Bishop Gibney and three members of the Sisters of Our Lady of the Missions. On 17 May 1906, ownership of the property was transferred to the Sisters. At the same time, the Sisters also became the proprietors of Lots 35 and 36 of Perth Town Lots N146 and N147, which adjoined their land in Mary Street.

The area of Highgate Hill continued to flourish and overcrowding at the school became an ongoing problem. Temporary pavilion classrooms were constructed in an attempt to provide a solution and classes were often held outside. By 1912, there were approximately 400 students at the school, 300 of these enrolled at Primary School level.

In 1923, the Sisters of Our Lady of the Missions realised their long held dream to erect their own chapel at the Monastery of Our Lady of the Sacred Heart. The Chapel was dedicated to the 'Little Flower', the venerable Sister Teresa of the Child Jesus. The Chapel was the first in Australia built in memory of the 'Little Flower'.

HISTORICAL INFORMATION

St. Therese was canonized a saint on May 17, 1925, by Pope Pius II. Therese loved flowers and saw herself as the little flower of Jesus. Other additions were also built at the time, including the 'tower' at the front of the east wing of the building.

The architect who designed the 1923 additions was Edgar Le B. Henderson, the son of the place's original architect E. J. Henderson. Messrs. Singleton and Pitman were the builders.

In 1933, another storey and verandah were added to the main building; the third floor was added to the Chapel and the Accommodation Wing. The next year two new rooms were constructed followed by the addition of two dormitories and a bathroom. In 1937, a brick building (the Auxiliary Wing), which included a laundry and various storerooms, was erected to the rear of the east wing. Architect Edgar Le B. Henderson designed all of these additions.

By 1967, the Sisters of Our Lady of the Missions realised that the boarding school facilities at Sacred Heart Catholic Group, Highgate were overtaxed and out of date. Plans were made to build a new convent and a boarding and day school on a sixteen acre site which the Sister's had purchased at Sorrento.

As part of the Commonwealth Government's policy to establish library and science blocks at schools, a new school wing was opened at Sacred Heart Catholic Group, Highgate in July 1971. The overall cost of the new building was \$90,000, with \$36,000 funded by the Commonwealth Government. The extension comprised an assembly hall, a science laboratory, library, toilet block and undercroft area. The Commonwealth Government also made a contribution of books for the new library. The High School Hall, which had been located to the rear of the east wing of the main building (the Classroom Wing), was demolished to make way for the new building.

In 1977/1978, a number of works were carried out at the School and Convent, including the demolition of the existing timber verandah on the east wing of the main building (the Classroom Wing) and the installation of a steel framed replacement. The most significant works at this time was the construction of the Hostel, attached at a ground floor level to the west wing of the main building. The Hostel provided nursing help and care for frail, invalid and elderly members of the Order.

HISTORICAL INFORMATION

In 1980, the WA Chapter of the Sisters of Our lady of the Missions decided to cease its secondary school operations at Highgate and at Fremantle. The high school at Sacred Heart Catholic Group, Highgate closed at the end of the school year in 1980.

Alterations and renovations were carried out at the Monastery of Our Lady of the Sacred Heart in 1987 at an estimated cost of \$180,000. The lift shaft was extended to the second floor, alterations occurred to a toilet block on the ground floor and a bathroom on the first floor, new wash basins were installed in three bedrooms on the first floor, a second floor bedroom was converted to a bathroom, and a laundry of the ground floor (near the hostel) was converted to a bedroom. A store in one of the outbuildings was altered for use as a laundry. Portion of the

existing roof was also replaced at this time. Architectural firm Casella Edgar & Wade designed the works.

The Order sold the place to the Roman Catholic Archdiocesan Office in early 2001. Following discussions that reduced the curtilage to exclude playing fields along Harold Street (now residential housing), the School and Convent's entry in the State Register of Heritage Places was made permanent in August 2001. The sisters vacated the site at the end of 2001.

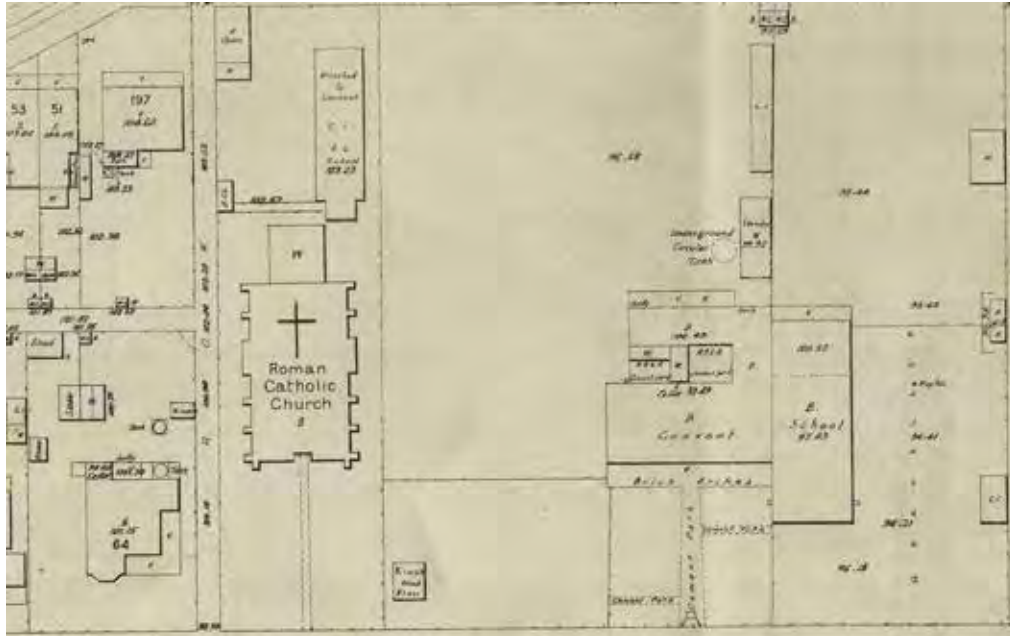
HISTORICAL INFORMATION

Historic theme	Peopling WA: Demographic development	
	Cultural Life: Domestic Life	
	Social Services: Education	
Associations	Casella Edgar & Wade	Architect
	Richard Joseph Dennehy	Architect
	Edgar Le B Henderson	Architect
	Edgar Henderson, Henderson & Jefferies	Architect
Sources	P2181 Sacred Heart Catholic Group, Highgate Assessment Documentation, DPLH, 2001.	

ADDITIONAL PHOTOGRAPHS



ARCHIVAL IMAGES



Sacred Heart Group Sewerage Plan, 1912. Courtesy SROWA cons 4156 item 095.