

SHOPS, 507-513 BEAUFORT STREET, HIGHGATE



PLACE INFORMATION	
Place name	Shops, 507-513 Beaufort Street
Other names	Scurlock's Chemist Mary St Bakery el Publico
Place type	Individual building or group

HERITAGE LISTING	
inHerit ID:	27564
State Heritage Register:	
Other Listing:	Municipal Inventory 21 Nov 2006 (348 Bulwer St)

SITE LOCATION	
Street address	507-513 Beaufort St
Locality	Highgate
Survey	LOT: 26 D/P: 672 LOT: 25 D/P: 672
Vol/folio	1346/536 1346/535
Reserve	—

SIGNIFICANCE	
Level of significance	Some Lower degree of integrity/authenticity but contributes to the heritage of the locality.
Management category	Category 4 Retain elements of the place where feasible. Photographically record prior to major development or demolition.
Statement of significance	<p>This place which originally comprised four individual shops has aesthetic value for the remaining evidence of its construction in the Federation Free Classical style in 1904, most clearly evident in the parapet on the Beaufort Street elevation.</p> <p>The place has historic value for its association with the development of Mount Lawley in the early 20th century and the role of Beaufort Street as a key shopping precinct throughout the 20th century.</p> <p>The place has historic value for its demonstration of the change of shopping practices from clusters of shops within walking distance from homes to the growth of shopping centres for everyday items.</p> <p>This place has historic value for its association with Scurlock's Chemist from 1913 to 1919 which was a well known professional service in Mount Lawley.</p> <p>The shops have social value for their ongoing presence in the streetscape and therefore contributes to the community sense of place.</p>

PLACE USE	
Original use	Commercial: Shop/retail store
Current use	Commercial: Restaurant
Other use	Commercial: Other

CONSTRUCTION DETAILS	
Construction date	1904; 1980s
Walls	Painted Brick
Roof	Corrugated metal sheeting
Architectural Style	Federation Free Classical
Physical description	<p>This place was originally four individual premises and there is little evidence of this arrangement. The place now reads as two commercial premises with the shop fronts displaying contemporary styling and finishes. The main entrance to 513, does reflect an earlier style of entrance with the single located within an angled alcove. The location of the front door to 507 Beaufort Street on the truncated corner is consistent with the original location.</p> <p>The parapet is rendered brick with some moulded detail, the most obvious is a triangle pediment across the junction of the two premises.</p> <p>The elevation facing Mary Street is painted rendered brick and the rear elevation is a cluster of openings and services. The rear half of the lots are predominantly paved and dedicated to parking.</p>
Condition	Good
Integrity	Moderate
Authenticity	Moderate

HISTORICAL INFORMATION

This shop was one of four built in 1904 for the owner Ethel Winifred Johnston, wife of Estate Agent James Robert Johnston. This couple lived in Bagot Road Subiaco and built these premises as an investment. In November 1903, architects Porter and Thomas called for tenders for the construction of four shops at the corner of Beaufort and Mary Streets. It is therefore assumed that the places were completed in 1904.

The first occupants as designated in the City of Perth Rates Books were; 437 (507-509) two shops Phillipe Rodden, grocer; Mrs Edwards, confectioner; and 439 (511-513) Mrs Cave, Bookseller; Herman Sharp, Fruiterer. The occupancy of these four shops changed frequently in the first decades of the 20th century with the rear of the buildings used for accommodation for the shop proprietors and their families.

The shop on the corner of Mary Street and Beaufort Street was designated as 507 Beaufort Street and occupied by Scurlock's Chemist from 1913 to 1919. The rear of the shop was designated as 2 Mary Street and was occupied by the Scurlock family. Welsh born John Scurlock (1859-1952) and his wife Jane Hilder Hood (1881-1965) and their four children migrated to Western Australia c1908 and first settled in Coolgardie before establishing Scurlock's Chemist in Mount Lawley. In 1920, the family and the shop relocated to larger premises at 508 Beaufort Street across the road from the original shop. Scurlock's Chemist was well known in Mount Lawley for its provision of services until the early 1950s, sometimes referred to as the 'poor man's doctor' as a visit to the chemist was cheaper than the doctor in this era.

A collection of items from Scurlock's chemist was donated to the WA Museum and demonstrates the type of items associated with a local chemists store in the first half of the 20th century.

The other shops in this group demonstrate the changing demographics and shopping behaviours. The original shops provided the everyday needs for residents who lived within walking distance, including groceries, drapers, confectioners and newsagents. With the advent of shopping centres and the growth in the use of private cars in the second half of the 20th century, small local retailers were no longer competitive and shops in Beaufort Street gradually changed to offer more boutique offerings, and many became restaurants and cafés.

HISTORICAL INFORMATION

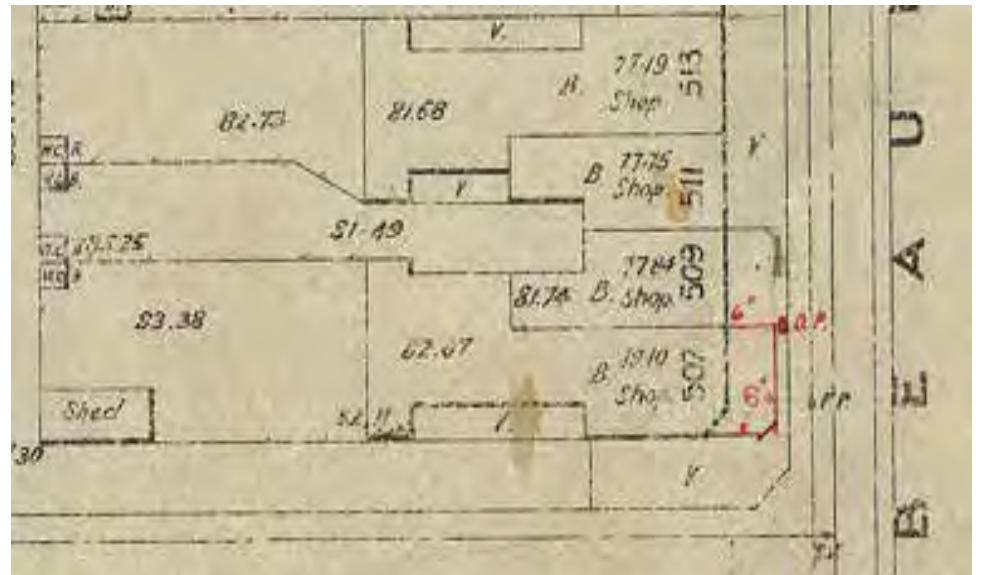
Considering the sewerage plan of the site which was prepared in 1912 and aerial photographs from the mid 20th century show that the verandah extended around the corner into Mary Street. The roof lines of the building was originally more complex allowing each shop to have access to the rear of the lots. In the 1980s the roof of the building was changed created a single flat roof extending from the parapet.

The four shops in this group were modified to create two premises through the removal of internal walls; 507 and 509 now [2024] occupied by Mary Street Bakery, and 511 and 513 combined to form bar, el Publico. The creation of two retail premises from the four has lead to significant changes in the shop fronts and finishes. It appears that the main entrance to el Publico may be the only original door which was the entrance to 513 Beaufort Street.

The Mary Street Bakery has occupied 507-509 since 2013 and has been a significant factor in the development of a restaurant precinct in Beaufort Street.

Historic theme	Demographic Settlement and Mobility - Settlements Peopling WA: Demographic Development Economy: Commerce	
Associations	Ethel and James Johnston John Scurlock, Scurlock's Chemist Mary Street Bakery Porter and Thomas	Original owners Occupant of 507 Beaufort St 1913-1919 Occupant of 507 Beaufort St 1913-1919 Architects
Sources	Wises Post Office Directory Australian Electoral Rolls Metropolitan Water & Sewerage Maps https://museum.wa.gov.au/online-collections/search/site/Scurlock	

ADDITIONAL PHOTOGRAPHS



Sewerage Plan 1912. Courtesy SROWA series 634 cons 4156 item 0095.