

# HARLEY ST HERITAGE AREA, HIGHGATE



PLACE INFORMATION	
Place name	Harley Street Heritage Area
Other names	
Place type	Precinct or Streetscape

HERITAGE LISTING	
inHerit ID:	25927
State Heritage Register:	
Other Listing:	City of Vincent Heritage Area Adopted 12 Dec 2017.

SITE LOCATION	
Street address	Harley St
Locality	Highgate
Survey	
Vol/folio	
Reserve	—

SIGNIFICANCE	
Level of significance	<p><b>Heritage Area</b></p> <p>A group of properties which are recognised to collectively form a streetscape, townscape or cultural environment with significant heritage characteristics, which may include architectural style, town planning or urban design excellence, landscape qualities, or strong historic associations.</p>
Management category	<p><b>Heritage Area</b></p>
Statement of significance	<p>Harley Street has moderate aesthetic value through its dominant display of single storey residences constructed in the Federation styles of architecture.</p> <p>Harley Street demonstrates a unified and cohesive physical form in the public realm. The overall form, style, height, setback and selection of materials of the historic dwellings contribute to the uniformity of the streetscapes, providing a coherent character.</p> <p>Harley Street contains a good representation of the wide variety of building design applied to the inner city residential areas during the Gold Rush period of 1891 to 1919. This includes substantial single residential dwellings with individual architectural detail, modest single residential dwellings, semi-detached and terraced dwellings.</p> <p>Harley Street has moderate historic value as an almost complete example of a 19th century streetscape, with the residences that were predominantly built in the late 1890s-1910s. It provides a good and rare historic record of the accommodation of people in this period.</p> <p>Overall, Harley Street is a highly intact example of late nineteenth to early twentieth century residential development comprising fine examples of modest single storey dwellings constructed in the Federation period of architecture.</p>

PLACE USE	
<b>Original use</b>	Residential: Single Storey Residence
<b>Current use</b>	Residential: Single Storey Residence
<b>Other use</b>	Residential: Conjoined Residence

CONSTRUCTION DETAILS	
<b>Construction date</b>	1891 - 1919
<b>Walls</b>	Brick Painted Brick Rendered Brick
<b>Roof</b>	Corrugated Metal sheeting
<b>Architectural Style</b>	Federation Queen Anne Federation Bungalow Federation Italianate Inter War California Bungalow Post War International Contemporary
<b>Physical description</b>	A street scape lined with dwellings that demonstrate the Federation Bungalow, Federation Queen Anne, Federation Italianate, and Inter War California Bungalow styles. Although alterations have been undertaken to some of the dwellings, and some new replacement development has occurred in the 1980s, the streetscape is largely consistent with the styles of the Gold Rush period and construction applied during this time.  Individual places have been identified for their heritage values. Refer to P8716 Vasse Terrace, P18012 House 21 Harley St and P11439 House 24 Harley St.
<b>Condition</b>	Good
<b>Integrity</b>	High
<b>Authenticity</b>	High

## HISTORICAL INFORMATION

Harley Street is part of the Highgate Hill subdivision, developed by surveyor Charles Crossland in 1874. He named the subdivision after his birthplace in London, and Harley Street is most likely named after the London street of that name, famous for being the address of medical specialists.

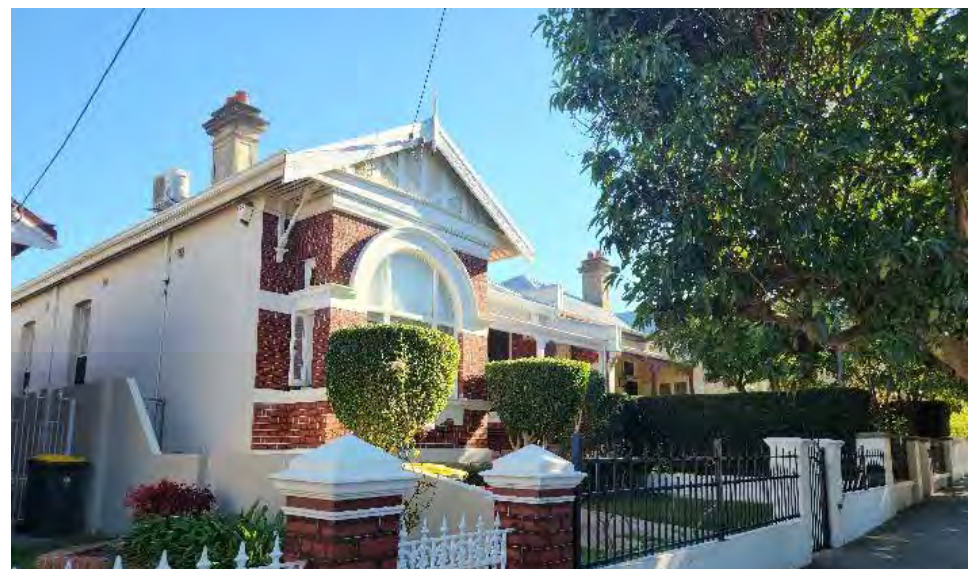
Highgate was one of the earliest suburban areas to be settled, commencing with a group of workman's cottages erected on the eastern side of Beaufort Street. It was slow to develop initially until both the Anglican and Roman Catholic churches were granted land in the area on the western side of Beaufort Street in the 1880s. St Alban's Anglican Church was subsequently erected at No. 423 Beaufort Street in 1889, the Sacred Heart Convent and School in 1898, and Sacred Heart Catholic Church in 1897 in Mary Street. Highgate Primary School was opened in Lincoln Street in 1895 as a result of a sudden increase in population and this attracted more families to the suburb as did the development of nearby Hyde Park around the turn of the century.

No places are shown in the street in the 1897 PWD sewerage plans, but there were ten dwellings and a terrace listed in the City of Perth Rate Books of 1898. This demonstrates the rapid development of the area in this period. By the 1920s the street was largely developed. Details of the approximate dates of construction for all places in the street can be found in the Local Planning Policy for Character Retention Areas and Heritage Areas. The original occupants of the residences in Harley Street were professionals or skilled tradespeople and their families. They were not the typically occupied by unskilled workers such as labourers.

There has been some replacement of dwellings in the 1980s however the street is largely intact from its original establishment in the Gold Boom period.

HISTORICAL INFORMATION	
<b>Historic theme</b>	Peopling WA: Demographic development Cultural Life: Domestic Life
<b>Associations</b>	
<b>Sources</b>	Municipal Heritage Inventory 2006, 2018. Landgate Aerial photographs 1953-2024. City of Vincent Local Planning Policy: Heritage Area Guidelines

### ADDITIONAL PHOTOGRAPHS



ADDITIONAL PHOTOGRAPHS

