



HERITAGE ASSESSMENT



CITY OF VINCENT

File No. RES0102	Address: No. 180 Beaufort Street, Perth			
Precinct: Beaufort	Place Name: Weld Square			
Locality: N/A	Folio: 9	Lot: 1217	D/P: 30904	Vol. 2221

STATEMENT OF SIGNIFICANCE

The place has *moderate historic value* as it is one of a few urban parks close to the city that originates from the late nineteenth century, using ideas from the Garden City and City Beautiful movements.

The place has *moderate social value* as it was used by Noongar people as a camping ground and meeting place and continues to have great importance for Aboriginal people and local community.

The place has *some aesthetic value* as its large grassed area and the mature trees are valued by the local and wider community.

MANAGEMENT CATEGORY:

The place has *moderate cultural heritage value* to warrant entry onto the City of Vincent's Municipal Heritage Inventory, as a Management Category B – Conservation Recommended.

REMARK:

The place was included on the former City of Perth Heritage List.

1.0 ASSESSMENT OF CULTURAL HERITAGE SIGNIFICANCE

The Policy No. 3.6.2 '*Heritage Management – Assessment*', adopted by the Council at its Ordinary Meeting held on 17 January 2006, amended on 10 July 2012 has been used to determine the cultural heritage significance of the place.

1.1 PRINCIPAL HISTORIC THEMES

- Population and settlement
- What people did together

HISTORIC SUB THEMES

- Aboriginal occupation
- City Beautiful movement

1.2 AESTHETIC VALUE

The place has *some aesthetic value* as its large grassed area and the mature trees are valued by the local and wider community.

1.3 HISTORIC VALUE

The place has *moderate historic value* as it is one of a few urban parks close to the city that originates from the late nineteenth century, using ideas from the Garden City and City Beautiful movements.

1.4 SCIENTIFIC VALUE

The place has *little scientific value*. There is no obvious potential for the place to yield information that will contribute to an understanding of the natural or cultural history of the City.

1.5 SOCIAL VALUE

The place has *moderate social value* as it was used by Noongar people as a camping ground and meeting place and continues to have great importance for Aboriginal people.

2.0 DEGREE OF SIGNIFICANCE**2.1 RARITY**

The place is considered rare as it is a representative example of an urban park close to the city that originates from the late nineteenth century, using ideas from the Garden City and City Beautiful movements.

2.2 REPRESENTATIVENESS

The place is representative of an urban park close to the city that originates from the late nineteenth century, using ideas from the Garden City and City Beautiful movements.

2.3 CONDITION

The place appears to be in *good condition*.

2.4 INTEGRITY

The place has a *high degree* of integrity.

2.5 AUTHENTICITY

Overall the place has a *high degree* of authenticity.

3.0 SUPPORTING EVIDENCE**3.1 DOCUMENTARY EVIDENCE**

The land on which Weld Square now sits was once part of a series of wetlands which drained into the Swan River. It was used by Noongar people as a camping ground and meeting place and continues to have great importance for Aboriginal people.

Weld Square was gazetted as a recreation reserve in 1873, though it was not landscaped until 1898. Weld Square was initially designed as a park by W E Bold and Harold Boas, two important figures in the early history of the City of Perth, using ideas from the Garden City and City Beautiful movements. The Square was named after Frederick Weld, who was the Governor of Western Australia between 1869 and 1875 and was responsible for the reservation of the site.

Due to the complex kinship and cultural obligations of Aboriginal people, Weld Square and other parks within the City of Vincent were often preferred meeting places for the Aboriginal people. Due to large extended families, many Aboriginal people prefer to meet in the parks rather than at homes in the suburbs.

More recently, charity groups also regularly use Weld Square for the distribution of food to homeless people.

Weld Square was listed on the City of Perth Municipal Heritage Inventory with Level 1 protection. The statement of significance declares “Weld Square is one of a few urban parks close to the city that originates from the late nineteenth century”. Weld Square is also listed as a Registered Aboriginal Site (Site ID 17848).

A Public Works Department (PWD) Sewerage Plans dated 1897 shows that Weld Square was bounded by Parry, Beaufort, Newcastle and Stirling Streets, located in the middle of a well developed area.¹

A Certificate of Title indicates that Weld Square, which was located at Perth Town Lot W110, was granted to the Mayor, Councillors and Burgesses of the City of Perth in 1887.²

No building licence was located and no other historical information relating to the subject place was obtained as part of this assessment.

3.2 PHYSICAL EVIDENCE

Weld Square, which was gazetted as a recreation reserve in 1873, covers slightly over one hectare and is bounded by Parry, Newcastle, Beaufort and Stirling Streets. A large proportion of the Square was disturbed when the tunnel section of the Graham Farmer Freeway was built.

Weld Square is European in design, using ideas from the Garden City and City Beautiful movements. Weld Square now consists of a large grassed area with a few scattered mature trees, some of which are large Moreton Bay figs (*Ficus macrophylla*). The existing facility in the square is a brick toilet block.

The Graham Farmer Freeway is located beneath the southern portion of the reserve (parallel to Newcastle Street) and therefore no significant plantings (trees) or large structures can be built on this section of the reserve.

Currently, Weld Square is owned and managed by the City of Vincent as one of the Parks open for public. A mini-basketball court has recently been installed and is proving extremely popular. Stage III of the Weld Square Redevelopment project promises to provide even further enhancement.

Streetscape

Weld Square is bounded by Parry, Newcastle, Beaufort and Stirling Streets. The buildings along these streets features a variety of architectural styles, which differ from one another in their form, scale, massing and usage, including commercial buildings, two to three storey residential buildings and one story single house.

3.3 COMPARATIVE INFORMATION

Whilst the scale of Weld Square is different from Hyde Park, which was constructed circa 1897 and is currently listed on the City's Municipal Heritage Inventory and the State Register of Heritage Places, they are both landscaped around the late nineteenth century. Both of the reserves are highly valued by the local and wider community. The other reserves within the City of Vincent including Charles Veryard Reserve and Smith's Lake drainage Reserve, which are listed on the City's Municipal Heritage Inventory, were constructed much later circa 1950s.

3.4 REFERENCES

¹ Public Works Department (PWD) Sewerage Plans dated 1897. See Appendix.

² Certificate of Title. City of Vincent file RES0102 V1.

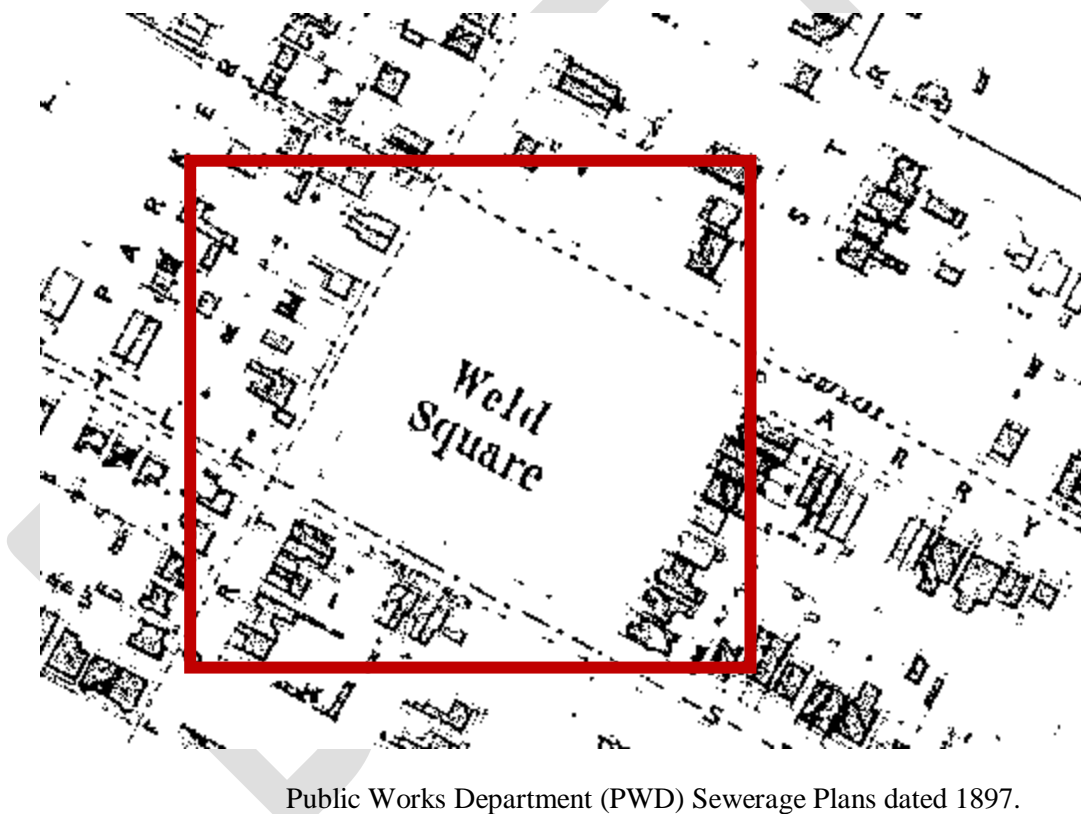
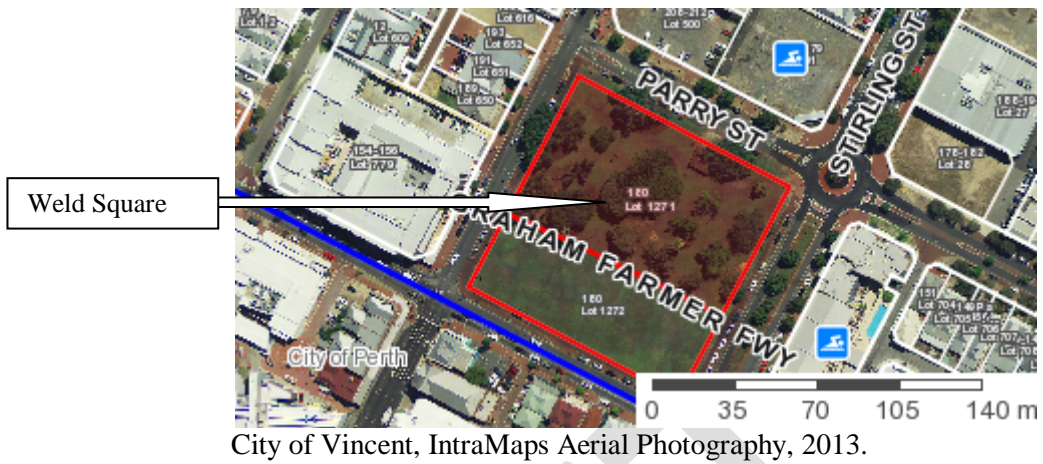
Certificate of Title. City of Vincent file RES0102 V1.
Public Works Department (PWD) Sewerage Plans dated 1897.

DRAFT

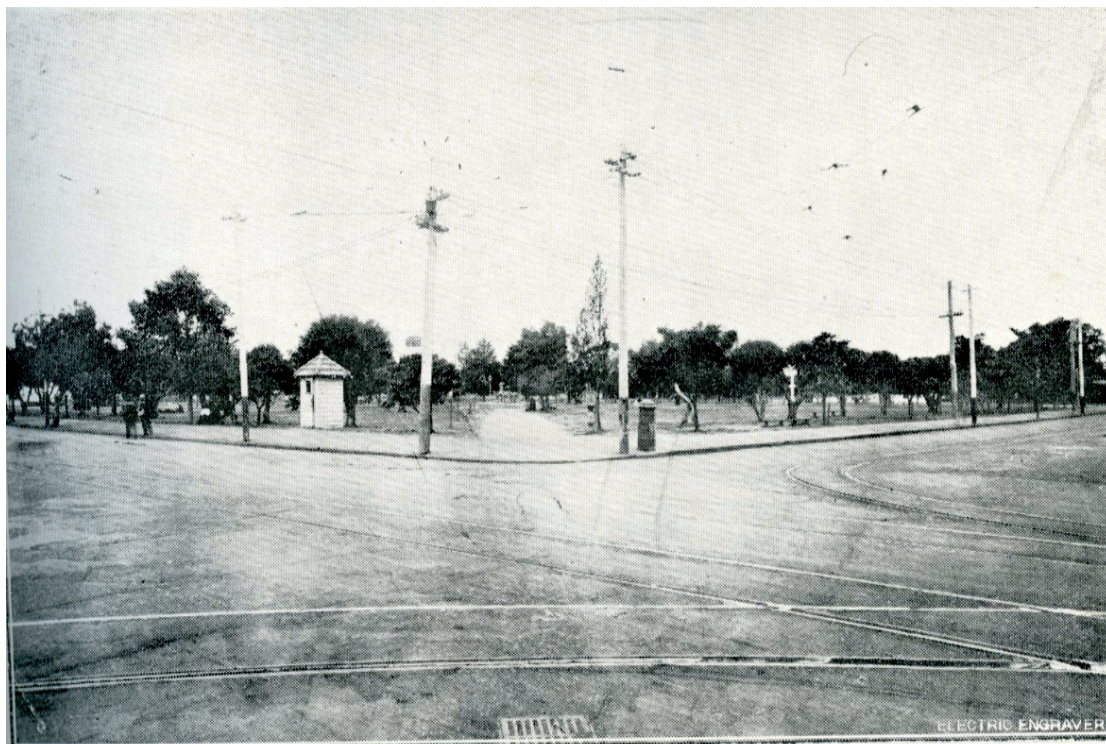
Appendix 1: Themes and Sub-Themes

Theme	Sub-Theme
1. Population and settlement	<ul style="list-style-type: none"> a. Aboriginal occupation b. Surveys and land allocation c. Workers d. Technology e. Government policy f. Depression and boom g. Exploitation h. Residential development i. Redevelopment and infill j. Refurbishment and recycling
2. Transport and communication	<ul style="list-style-type: none"> a. Roads b. Horses c. Rail d. Mail services e. Newspapers f. Telecommunications g. Bus transport h. Trams
3. What people did for a living	<ul style="list-style-type: none"> a. Rural activities b. Domestic activities c. Factories d. Retail and commercial businesses e. Government utilities and agencies f. Service industries
4. What people did together	<ul style="list-style-type: none"> a. Government and politics b. Education c. Law and order d. Community services and utilities e. Sport, recreation and entertainment f. Religion g. Cultural activities h. Health i. Community organisations j. Environment
5. Outside influences	<ul style="list-style-type: none"> a. Wars b. Other national and world events c. Depression and boom d. Transport routes e. Immigration
6. Famous people and events	<ul style="list-style-type: none"> a. Aborigines b. Early settlement c. Local heroes and battlers d. Famous and infamous

Appendix 2: Plans



Appendix 4: Images



Weld Square, Corner Beaufort and Newcastle Streets, Perth.

DR

Appendix 4: Images

