



CITY OF VINCENT

LIGHTBOX

LANEWAY GALLERY

INFORMATION FOR EXPRESSIONS OF INTEREST

At Vincent we acknowledge the importance of public art and the role it plays in meeting its strategic objective to celebrate, acknowledge and promote the City's cultural and social diversity. The aim of the Lightbox Laneway Gallery is to provide a public exhibition space to showcase Artists, and provide the community with an accessible gallery.

8 lightbox cabinets are located in the laneway at 483 Beaufort Street, Highgate with exhibitions running for 3 months, providing 4 exhibitions a year. We recommend dedicating 1 lightbox to Artist information, and directing the community to purchase your works and to find out more about you. It's encouraged that artworks, or reproduced prints, be for sale.

Proposals should be conceptually resolved and supported by a visual mock up alongside examples of past works and submitted to mail@vincent.wa.gov.au by the closing date provided. Preference will be given to local Vincent Artists.

LIGHTBOX DIMENSIONS AND FITTINGS

Proposals are to address all 8 lightboxes with four being portrait, and four landscape. The display areas are A2 (594mm x 420mm) with a 100mm depth and lit internally with energy efficient LED lights which are solar powered. Print works are secured by magnet strips within the cases. Diagrams are found in Appendix 1.

MATERIALS AND INSTALLATION

It's suggested that you don't use rare, valuable, precious or irreplaceable materials. Prints, opposed to original artwork are suggested, and non-adhesive transparency film prints work best with the lighting.

You will meet City's Officers on-site to install works. The artwork will be removed when the next exhibition is installed and you'll be advised when the works are ready to be collected from the City.

THE COMMISSION

Proposals should respond to the space in a contemporary manner. Applications will be assessed based on:

- the exhibition rationale;
- demonstration of artistic excellence and innovation of the works proposed; and
- quality of previous artworks (supported by image submission).

All artwork and imagery is to be G rated and to contain no offensive material.

BUDGET

The commission is \$1,000 (ex GST).

This budget should cover all costs related to the development, marketing and installation of the work, including artist fees, production fees and materials. The budget can also go towards a small exhibition launch event, organised by you and approved by the City.

COPYRIGHT AND INSURANCE

The City reserves the right to document, or otherwise use any artwork submitted for Lightbox Laneway Gallery for purposes associated with Lightbox Laneway Gallery, without charge. The City will acknowledge the Artist as the author of the Artwork and recognise the Moral Rights of the Artist in accordance with the Copyright Act 1968.

The Artist agrees that the copyright in all artworks created in the course of the contract remain the property of the Artist. The Artist shall give the City a non-exclusive Licence to reproduce the images for related non-commercial purposes including publicity and promotion of the event/project, education and record keeping.

The Artist warrants that the Artworks and any Intellectual Property supplied by the Artist and embodied or used in connection with the Artwork is the sole property of the Artist or the Artist is legally entitled to use the Intellectual Property for the provision of the Artwork.

The Laneway Lightbox Gallery is insured as part of the City's public art register.

ENQUIRIES

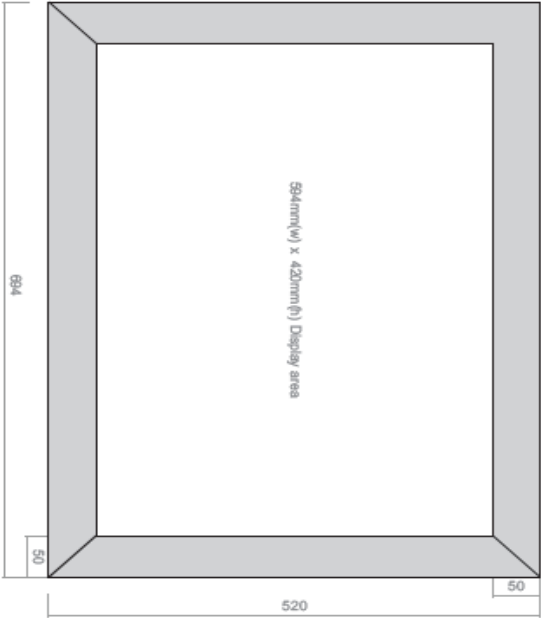
All enquiries should be directed to the City's Arts and Activation Officer on 9273 6000 or email mail@vincent.wa.gov.au



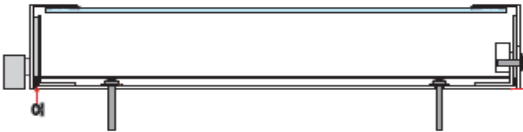
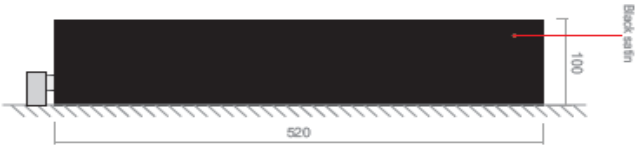
Lightbox Artwork by: Ruby Smedley. Mural by: Drew Straker. Photo by: The Rabbit Hole

APPENDIX 1

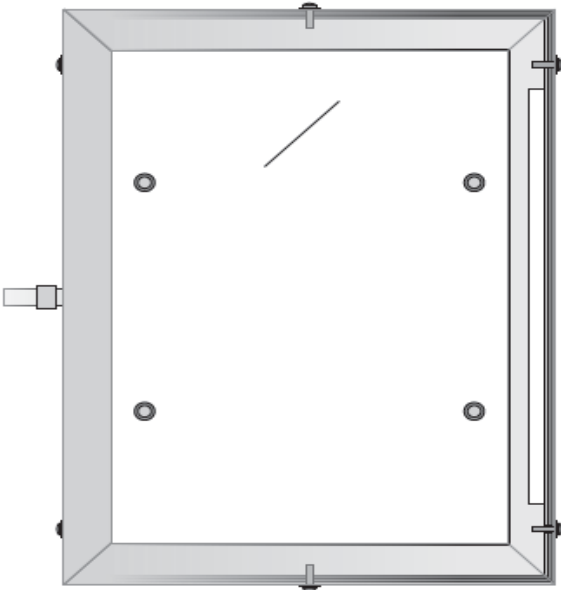
- Landscape Front Display Elevation
- A2(594mm x 420mm) display area.
 - Unished face - patterned metallic appearance

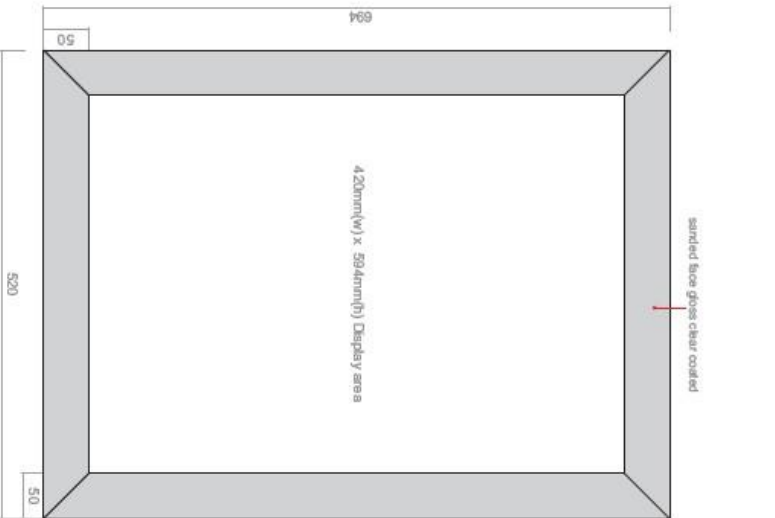


- Landscape Side Elevation
- Side Elevation Cutaway
- Colour applied to sides only. Sample to be supplied
 - sanded face black return



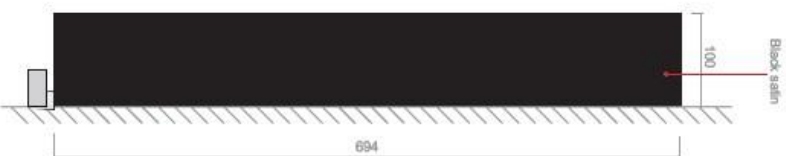
Front Display Cutaway





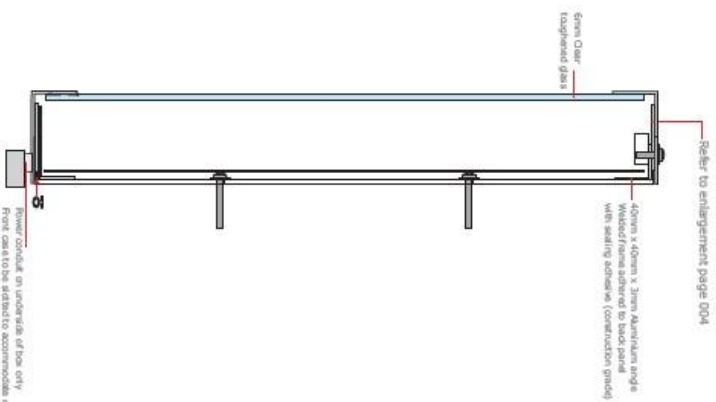
Landscape Front Display Elevation

- A2(594mm x 420mm) display area.
- Unfinished face - patterned metallic appearance

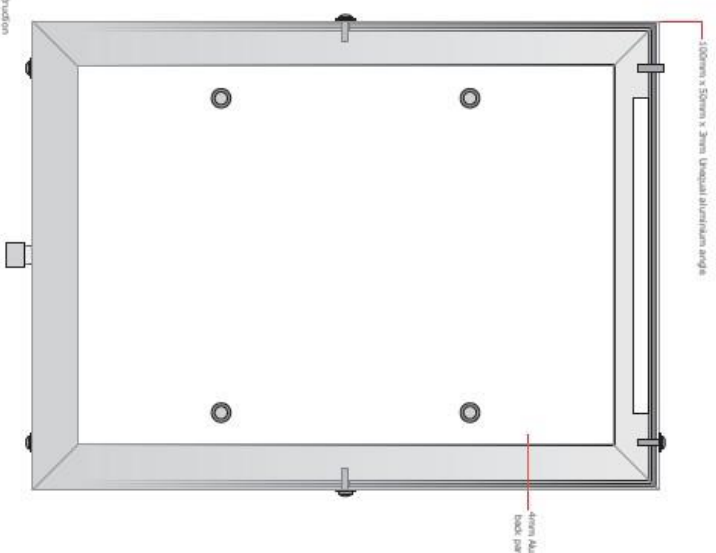


Landscape Side Elevation

- Colour applied to sides only. Sample to be supplied
- sanded face black return



Side Elevation Cutaway



Front Display Cutaway

