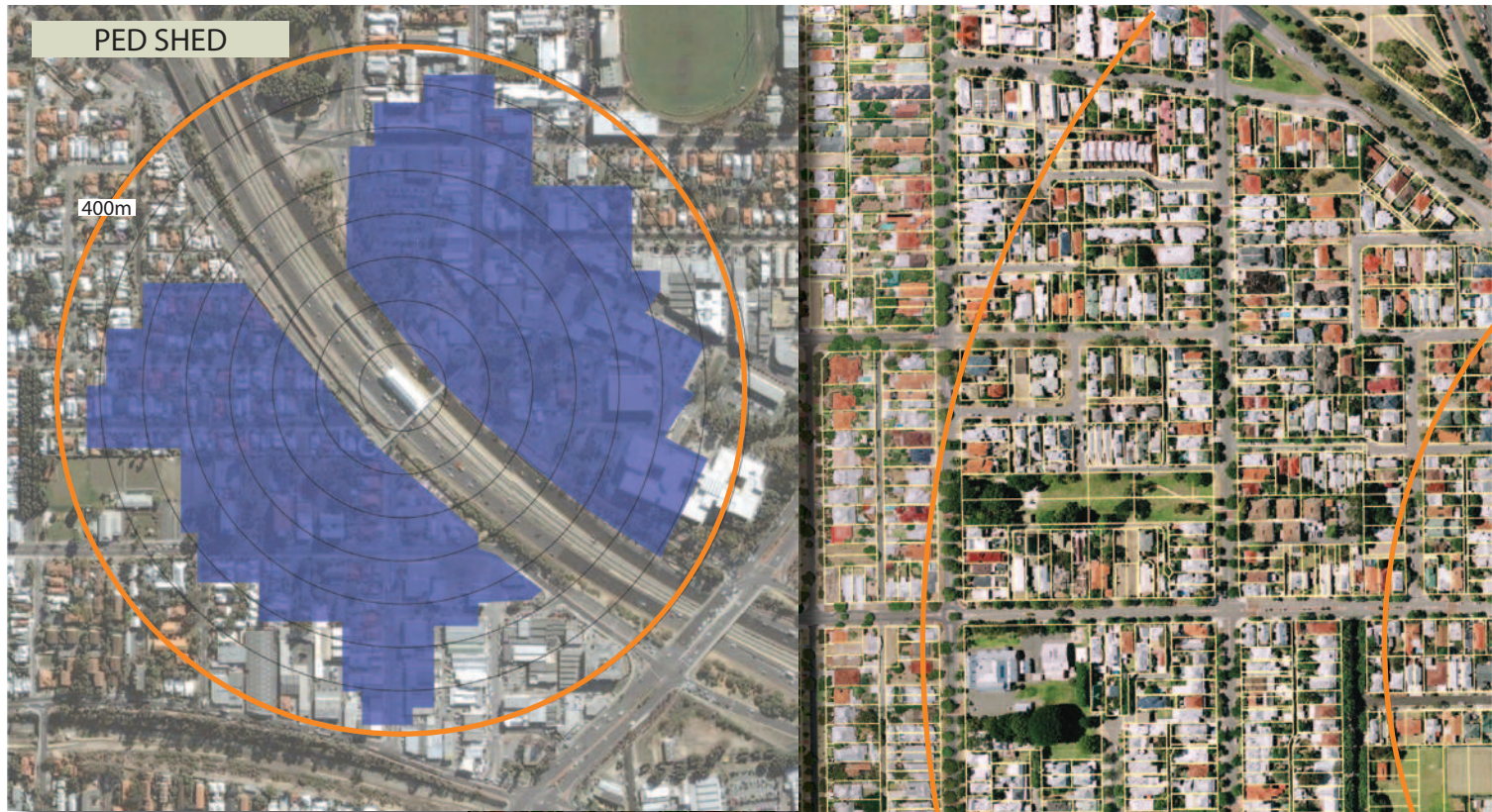


2.0 site analysis

2.5 Pedestrian Movement



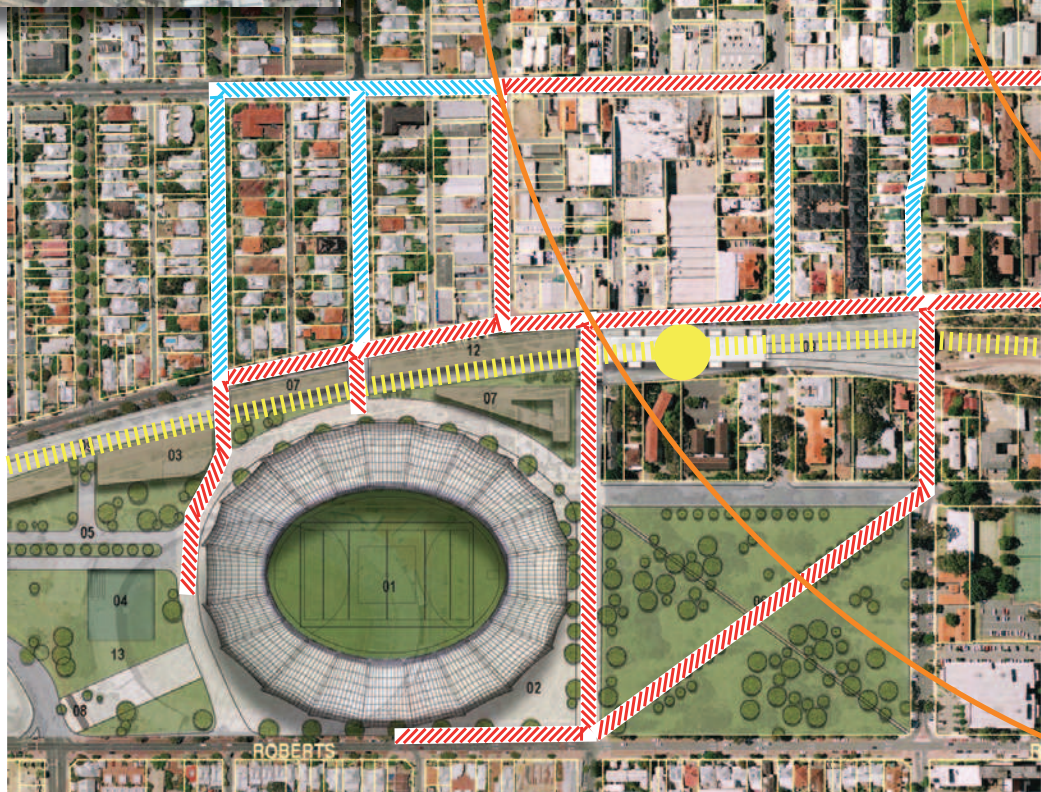
Perth's new stadium represents an opportunity to filter people through the study area to the Leederville Station.

Measures should be taken to ensure that this movement of pedestrians is controlled to minimise the potential negative effect on residents.

The most desirable routes are those with commercial activation and less residential at the ground level, such as Cambridge Street, Northwood Street and Southport Street. Commercial opportunities can be created on these streets by encouraging people to walk past.

Keys to encouraging movement along the desired pathways include the scale, type and form of buildings, streetscaping and signage.

- ////// Desired Pedestrian Route
- ////// Less Desirable Route



2.0 site analysis



2.0 site analysis

2.6 Land Ownership



2.0 site analysis

Legend


- 1
 Lots 99 & 102 Cambridge Street (Vacant)
 Owned by Town of Cambridge
 (Approximately 2023m²)
- 2
 Lot 33 Cambridge Street
 Existing development (circa 1977)
 Comprises 79 multiple dwelling units over 8 levels.
 [Already exceeds maximum development potential of up to 64 units under R160]
- 3
 Lot 200 Cambridge Street
 Existing development (circa 1985)
 Comprises 60 multiple dwelling units over 6 levels.
 [Maximum development potential up to 64 units based on R160]
- 4
 Lot 105 Cambridge Street (Vacant)
 Owned by Cambridge Syndicate (private)
 (Approximately 2023m²)
- 5
 Lot 32 Cambridge Street
 Existing development (circa 1979)
 Comprises 47 multiple dwelling units over 6 levels
 [Maximum development potential up to 64 units based on R160]
- 6
 Land parcels on Southport Street
 owned by Main Roads WA and encompassing
 pedestrian access to footbridge, one dwelling
 and remaining unutilised land.
- 7
 Lot 1 (2) Oxford Close
 Owned by Town of Cambridge
 (Approximately 682m²)
 Note: we understand this lot has recently been sold to a private developer.

STATE GOVERNMENT

LOCAL GOVERNMENT

MULTIPLE LAND PARCELS WITH SINGLE OWNERSHIP - CONTIGUOUS

MULTIPLE LAND PARCELS WITH SINGLE OWNERSHIP - NON-CONTIGUOUS



0 20 40 60 80m