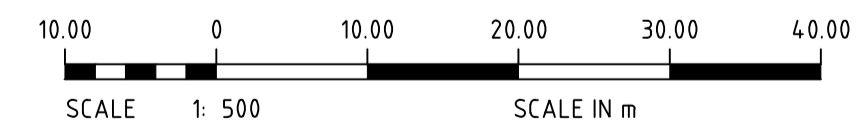


LEGEND

- SINGLE BARRIER LINE
- CONTINUITY LINE
- YELLOW BUS LANE LINE
- PARKING/BUS EMBAYMENT LINEMARKING
- STRAIGHT PAVEMENT ARROW
- STRAIGHT/LEFT OPTION PAVEMENT ARROW
- RRPM'S WHITE UNIDIRECTIONAL
- SINGLE POST SIGN (NTS)
- 'AM BUS LANE' PAVEMENT MARKING
- 'PM BUS LANE' PAVEMENT MARKING
- 'BUS LANE AHEAD' PAVEMENT MARKING
- TYPE 'A' CLEARWAY SIGN UPDATE - PM CHANGE
- TYPE 'B' CLEARWAY SIGN UPDATE - AM CHANGE
- TYPE 'C' PARKING SIGN UPDATE
- PAVEMENT TYPE 1

NOTES:

1. ALL SIGNS TO BE INSTALLED IN ACCORDANCE TO AS 1742.12
2. ALL BUS LANE PAVEMENT MARKINGS SHALL CONFORM TO MAIN ROADS STANDARD DRAWING 201031-0026 AND AS 1742.12
3. FOR LOCATION OF COUNCIL BOUNDARY CHANGE - REFER TO DRAWING OEC553-DW-CV-GEN-0003
4. CLEARWAY AND PARKING TIMES TO BE UPDATED BY PLATING OVER EXISTING SIGN WITH REVISED TIMES AS SHOWN ON LEGEND
5. ALL BUS LANE MARKING TO BE YELLOW
6. RAISED REFLECTIVE PAVEMENT MARKINGS TO CONFORM TO MAINROADS STANDARD DRAWING 201031-0026
7. FOR PAVEMENT ARROW DETAILS REFER TO MAINROADS STANDARD DRAWING 9531-2010
8. FOR PAVEMENT DETAILS REFER TO DRAWING PEC553-DW-CV-PAV-0001
9. ALL EXISTING BUS AND PARKING EMBAYMENT PAVEMENT MARKING TO BE REMARKED TO MATCH EXISTING.
10. ALL RUBBER SPEED BUMPS AFFECTED BY THE WORKS TO BE REPLACED TO MATCH EXISTING.



NOT FOR CONSTRUCTION

ISSUE LIST	CIRCUIT BOOK	SHEET
------------	--------------	-------

REV	DATE	DESCRIPTION	DRN	CHKD	APP
B	24.11.15	ISSUED FOR 100% REVIEW	SF	WM	AS
A	24.04.15	ISSUED FOR REVIEW	DK	GY	RG
AMENDMENT					
PEC553-DW-CV-GEN-0003					
ORIG SIZE A1					

Kellogg Brown & Root Pty Ltd

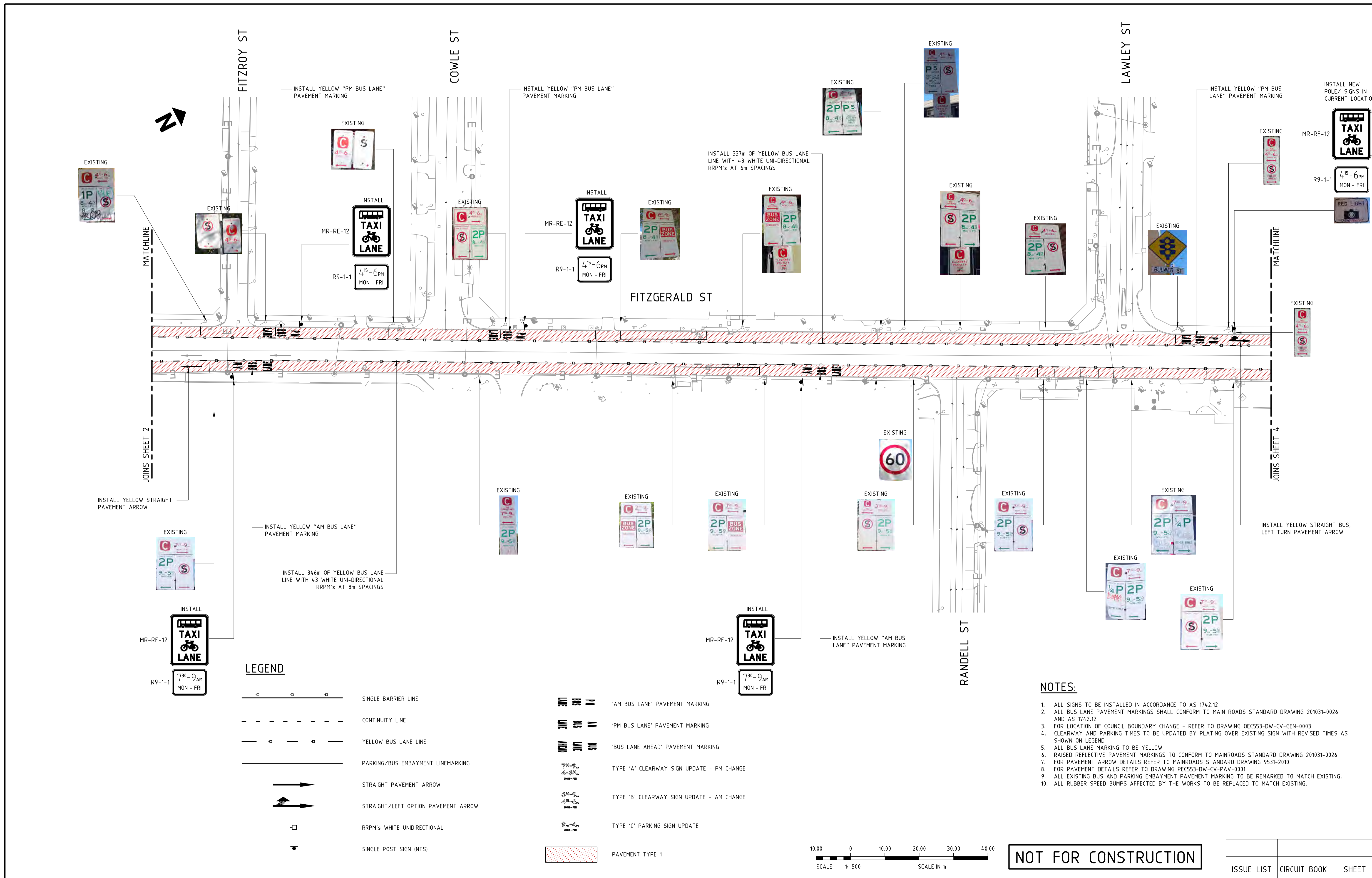
 ABN 91 007 660 317
 300 Murray Street, Perth
 Western Australia 6000

SCALE :	NTS (@ A1)
DATUM :	HORIZONTAL: PCG94
VERTICAL:	AHD71

DRAWN	S. FENTON
DESIGNED	W. BOWYER
CHECKED	W. MAKONI
APPROVED	A. SHAH

PTA DIVISION	
APPROVED FOR ISSUE	
PTA BRANCH MANAGER'S TITLE	
Date	

PTA Drawing No:
FITZGERALD STREET
BUS PRIORITY UPGRADE
SIGNS AND PAVEMENT MARKING SHEET 2
 MRWA Drawing No: REV : B



Kellogg Brown & Root Pty Ltd
KBR
 ABN 91 007 660 317
 300 Murray Street, Perth
 Western Australia 6000

SCALE :	NTS (@ A1)
DATUM :	HORIZONTAL: PCG94
VERTICAL:	AHD71

DRAWN	S. FENTON
DESIGNED	W. BOWYER
CHECKED	W. MAKONI
APPROVED	A. SHAH

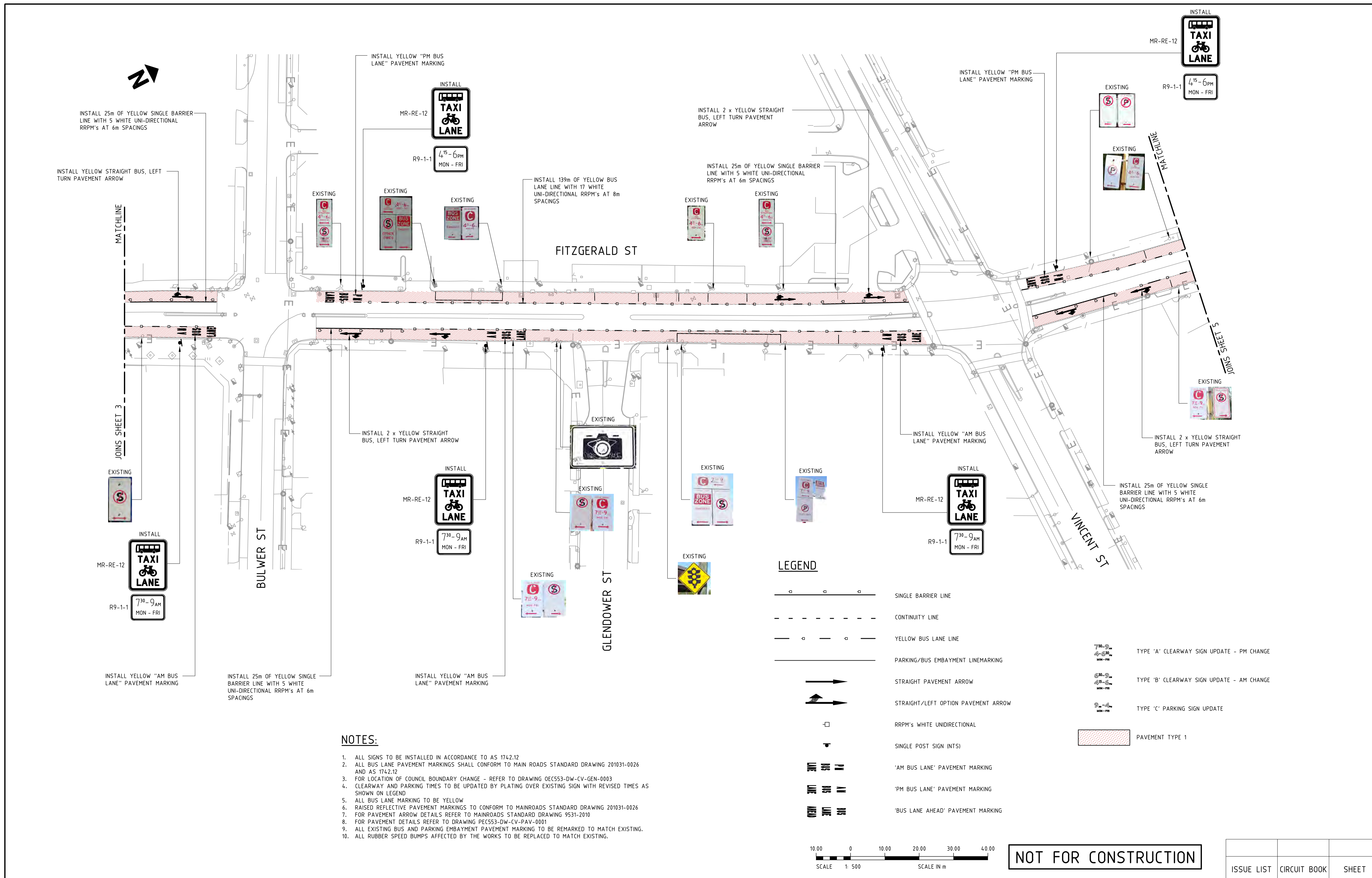
PTA DIVISION
 APPROVED FOR ISSUE
 PTA BRANCH MANAGER'S TITLE
 Date

Government of Western Australia
 Public Transport Authority

PTA Drawing No:
**FITZGERALD STREET
 BUS PRIORITY UPGRADE
 SIGNS AND PAVEMENT MARKING SHEET 3**

MRWA Drawing No:
 REV : B

ISSUE LIST	CIRCUIT BOOK	SHEET
------------	--------------	-------



- NOTES:**
1. ALL SIGNS TO BE INSTALLED IN ACCORDANCE TO AS 1742.12
 2. ALL BUS LANE PAVEMENT MARKINGS SHALL CONFORM TO MAIN ROADS STANDARD DRAWING 201031-0026 AND AS 1742.12
 3. FOR LOCATION OF COUNCIL BOUNDARY CHANGE - REFER TO DRAWING OEC553-DW-GEN-0003
 4. CLEARWAY AND PARKING TIMES TO BE UPDATED BY PLATING OVER EXISTING SIGN WITH REVISED TIMES AS SHOWN ON LEGEND
 5. ALL BUS LANE MARKING TO BE YELLOW
 6. RAISED REFLECTIVE PAVEMENT MARKINGS TO CONFORM TO MAINROADS STANDARD DRAWING 201031-0026
 7. FOR PAVEMENT ARROW DETAILS REFER TO MAINROADS STANDARD DRAWING 9531-2010
 8. FOR PAVEMENT DETAILS REFER TO DRAWING PEC553-DW-CV-PAV-0001
 9. ALL EXISTING BUS AND PARKING EMBAYMENT PAVEMENT MARKING TO BE REMARKED TO MATCH EXISTING.
 10. ALL RUBBER SPEED BUMPS AFFECTED BY THE WORKS TO BE REPLACED TO MATCH EXISTING.

NOT FOR CONSTRUCTION

ISSUE LIST	CIRCUIT BOOK	SHEET
------------	--------------	-------

REV	DATE	AMENDMENT	DRN	CHKD	APP
B	24.11.15	ISSUED FOR 100% REVIEW	SF	WM	AS
A	24.04.15	ISSUED FOR REVIEW	DK	GY	RG
ORIG SIZE A1					
PEC553-DW-CV-GEN-0005					

Kellogg Brown & Root Pty Ltd

KBR

ABN 91 007 660 317
300 Murray Street, Perth
Western Australia 6000

SCALE : NTS (@ A1)	DRAWN S. FENTON	PTA DIVISION
DATUM : HORIZONTAL: PCG94	DESIGNED W. BOWYER	APPROVED FOR ISSUE
VERTICAL: AHD71	CHECKED W. MAKONI	PTA BRANCH MANAGER'S TITLE
	APPROVED A. SHAH	Date
<p>0 10 20 30 40 50 100mm</p> <p>This document must not be copied without PTA's written permission, and the contents thereof must not be imparted to a third party nor be used for any unauthorised purpose.</p>		

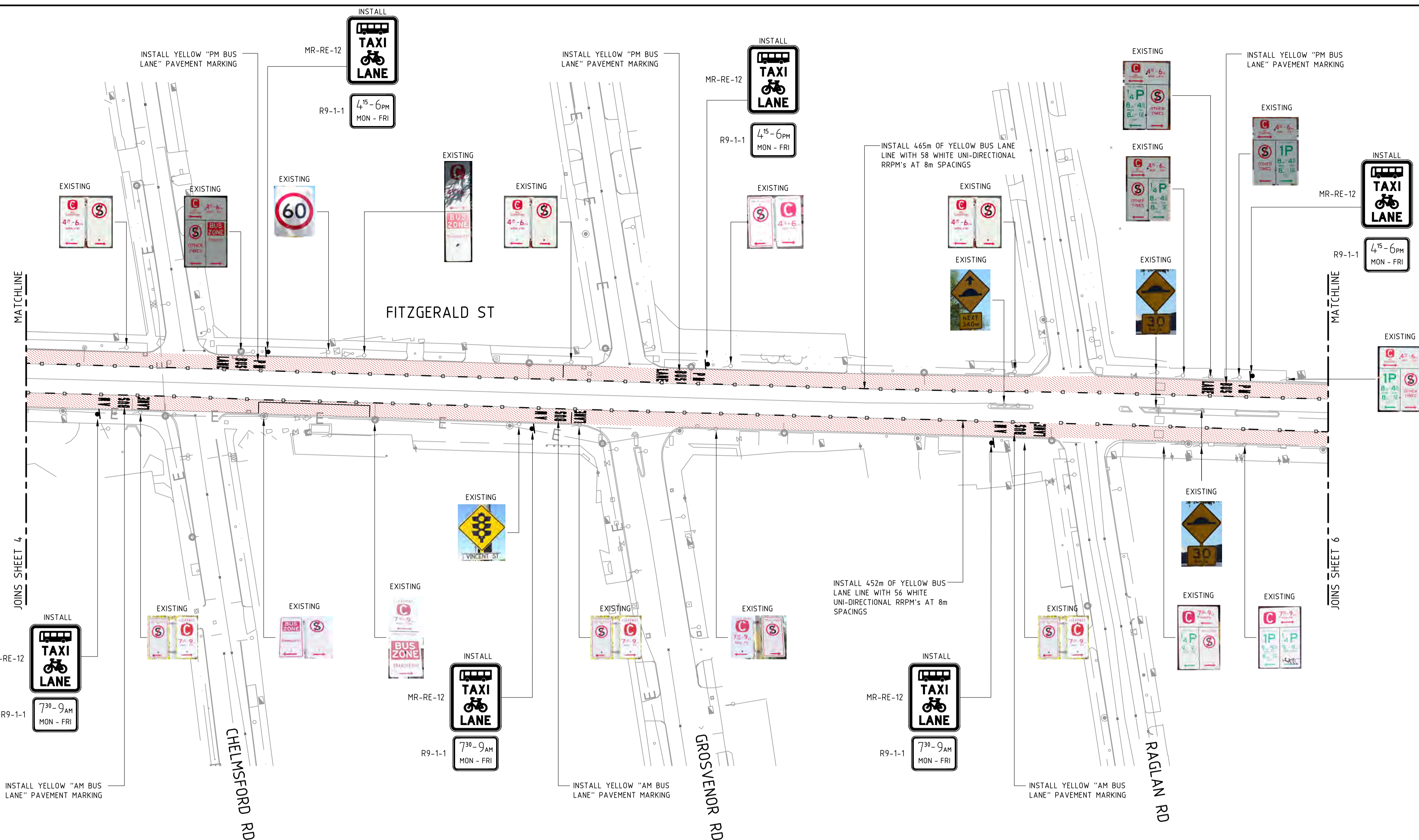
Government of Western Australia
Public Transport Authority

PTA Drawing No:

**FITZGERALD STREET
BUS PRIORITY UPGRADE
SIGNS AND PAVEMENT MARKING SHEET 4**

MRWA Drawing No:

REV : B



LEGEND

- SINGLE BARRIER LINE
- CONTINUITY LINE
- YELLOW BUS LANE LINE
- PARKING/BUS EMBAYMENT LINEMARKING
- STRAIGHT PAVEMENT ARROW
- STRAIGHT/LEFT OPTION PAVEMENT ARROW
- RRPM'S WHITE UNIDIRECTIONAL
- SINGLE POST SIGN (NTS)
- 'AM BUS LANE' PAVEMENT MARKING
- 'PM BUS LANE' PAVEMENT MARKING
- 'BUS LANE AHEAD' PAVEMENT MARKING
- PAVEMENT TYPE 1
- TYPE 'A' CLEARWAY SIGN UPDATE - PM CHANGE
- TYPE 'B' CLEARWAY SIGN UPDATE - AM CHANGE
- TYPE 'C' PARKING SIGN UPDATE

NOTES:

1. ALL SIGNS TO BE INSTALLED IN ACCORDANCE TO AS 1742.12
2. ALL BUS LANE PAVEMENT MARKINGS SHALL CONFORM TO MAIN ROADS STANDARD DRAWING 201031-0026 AND AS 1742.12
3. FOR LOCATION OF COUNCIL BOUNDARY CHANGE - REFER TO DRAWING OEC553-DW-CV-GEN-0003
4. CLEARWAY AND PARKING TIMES TO BE UPDATED BY PLATING OVER EXISTING SIGN WITH REVISED TIMES AS SHOWN ON LEGEND
5. ALL BUS LANE MARKING TO BE YELLOW
6. RAISED REFLECTIVE PAVEMENT MARKINGS TO CONFORM TO MAINROADS STANDARD DRAWING 201031-0026
7. FOR PAVEMENT ARROW DETAILS REFER TO MAINROADS STANDARD DRAWING 9531-2010
8. FOR PAVEMENT DETAILS REFER TO DRAWING PEC553-DW-CV-PAV-0001
9. ALL EXISTING BUS AND PARKING EMBAYMENT PAVEMENT MARKING TO BE REMARKED TO MATCH EXISTING.
10. ALL RUBBER SPEED BUMPS AFFECTED BY THE WORKS TO BE REPLACED TO MATCH EXISTING.



NOT FOR CONSTRUCTION

ISSUE LIST	CIRCUIT BOOK	SHEET
------------	--------------	-------

REV	DATE	AMENDMENT	DRN	CHKD	APP
B	24.11.15	ISSUED FOR 100% REVIEW	SF	WM	AS
A	24.04.15	ISSUED FOR REVIEW	DK	GY	RG
ORIG SIZE A1					

Kellogg Brown & Root Pty Ltd

KBR

ABN 91 007 660 317
300 Murray Street, Perth
Western Australia 6000

SCALE : NTS (@ A1)	DRAWN S. FENTON	PTA DIVISION
DATUM :	DESIGNED W. BOWYER	APPROVED FOR ISSUE
HORIZONTAL: PCG94	CHECKED W. MAKONI	PTA BRANCH MANAGER'S TITLE
VERTICAL: AHD71	APPROVED A. SHAH	Date

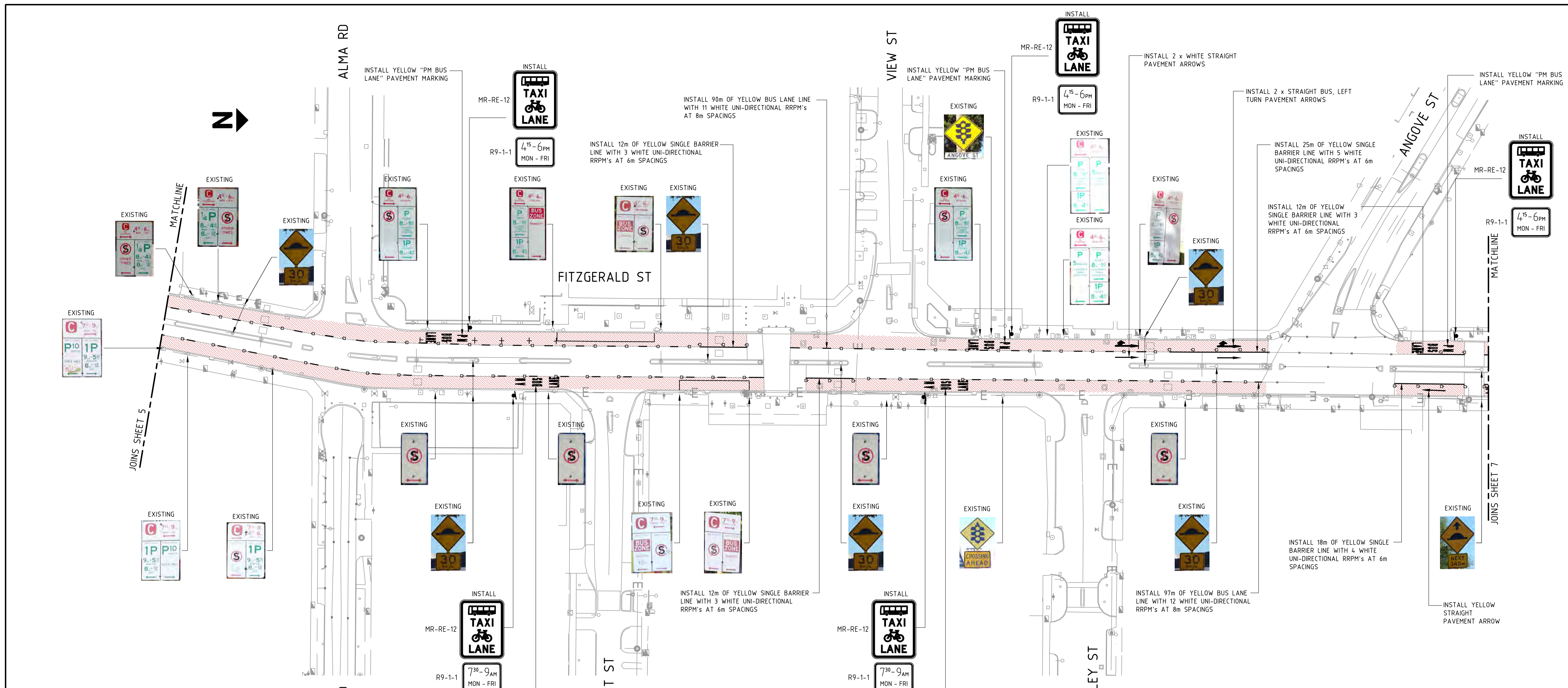
Government of Western Australia
Public Transport Authority

**FITZGERALD STREET
BUS PRIORITY UPGRADE
SIGNS AND PAVEMENT MARKING SHEET 5**

MRWA Drawing No: _____

REV : **B**

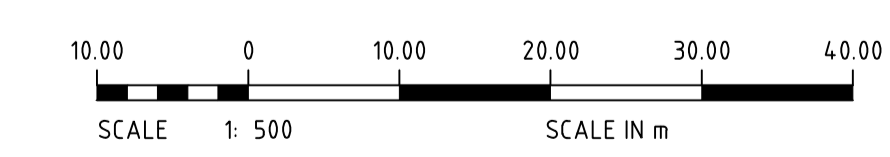
PTA Drawing No: _____	REV : B
-----------------------	----------------



LEGEND

- SINGLE BARRIER LINE
- CONTINUITY LINE
- YELLOW BUS LANE LINE
- PARKING/BUS EMBAYMENT LINEMARKING
- STRAIGHT PAVEMENT ARROW
- STRAIGHT/LEFT OPTION PAVEMENT ARROW
- RRPMS WHITE UNIDIRECTIONAL
- SINGLE POST SIGN (NTS)
- 'AM BUS LANE' PAVEMENT MARKING
- 'PM BUS LANE' PAVEMENT MARKING
- 'BUS LANE AHEAD' PAVEMENT MARKING
- PAVEMENT TYPE 1
- TYPE 'A' CLEARWAY SIGN UPDATE - PM CHANGE
- TYPE 'B' CLEARWAY SIGN UPDATE - AM CHANGE
- TYPE 'C' PARKING SIGN UPDATE

- NOTES:**
1. ALL SIGNS TO BE INSTALLED IN ACCORDANCE TO AS 1742.12
 2. ALL BUS LANE PAVEMENT MARKINGS SHALL CONFORM TO MAIN ROADS STANDARD DRAWING 201031-0026 AND AS 1742.12
 3. FOR LOCATION OF COUNCIL BOUNDARY CHANGE - REFER TO DRAWING 0EC553-DW-CV-GEN-0003
 4. CLEARWAY AND PARKING TIMES TO BE UPDATED BY PLATING OVER EXISTING SIGN WITH REVISED TIMES AS SHOWN ON LEGEND
 5. ALL BUS LANE MARKING TO BE YELLOW
 6. RAISED REFLECTIVE PAVEMENT MARKINGS TO CONFORM TO MAINROADS STANDARD DRAWING 201031-0026
 7. FOR PAVEMENT ARROW DETAILS REFER TO MAINROADS STANDARD DRAWING 9531-2010
 8. FOR PAVEMENT DETAILS REFER TO DRAWING PEC553-DW-CV-PAV-0001
 9. ALL EXISTING BUS AND PARKING EMBAYMENT PAVEMENT MARKING TO BE REMARKED TO MATCH EXISTING.
 10. ALL RUBBER SPEED BUMPS AFFECTED BY THE WORKS TO BE REPLACED TO MATCH EXISTING.



NOT FOR CONSTRUCTION

ISSUE LIST	CIRCUIT BOOK	SHEET
------------	--------------	-------

REV	DATE	ISSUED FOR 100% REVIEW	SF	WM	AS
A	24.04.15	ISSUED FOR REVIEW	DK	GY	RG
AMENDMENT			DRN	CHKD	APP
ORIG SIZE	A1				

Kellogg Brown & Root Pty Ltd

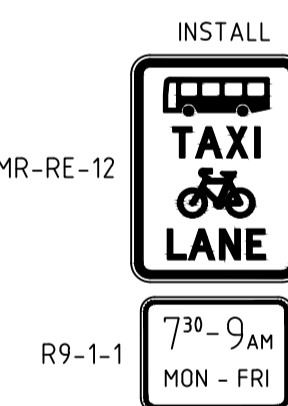
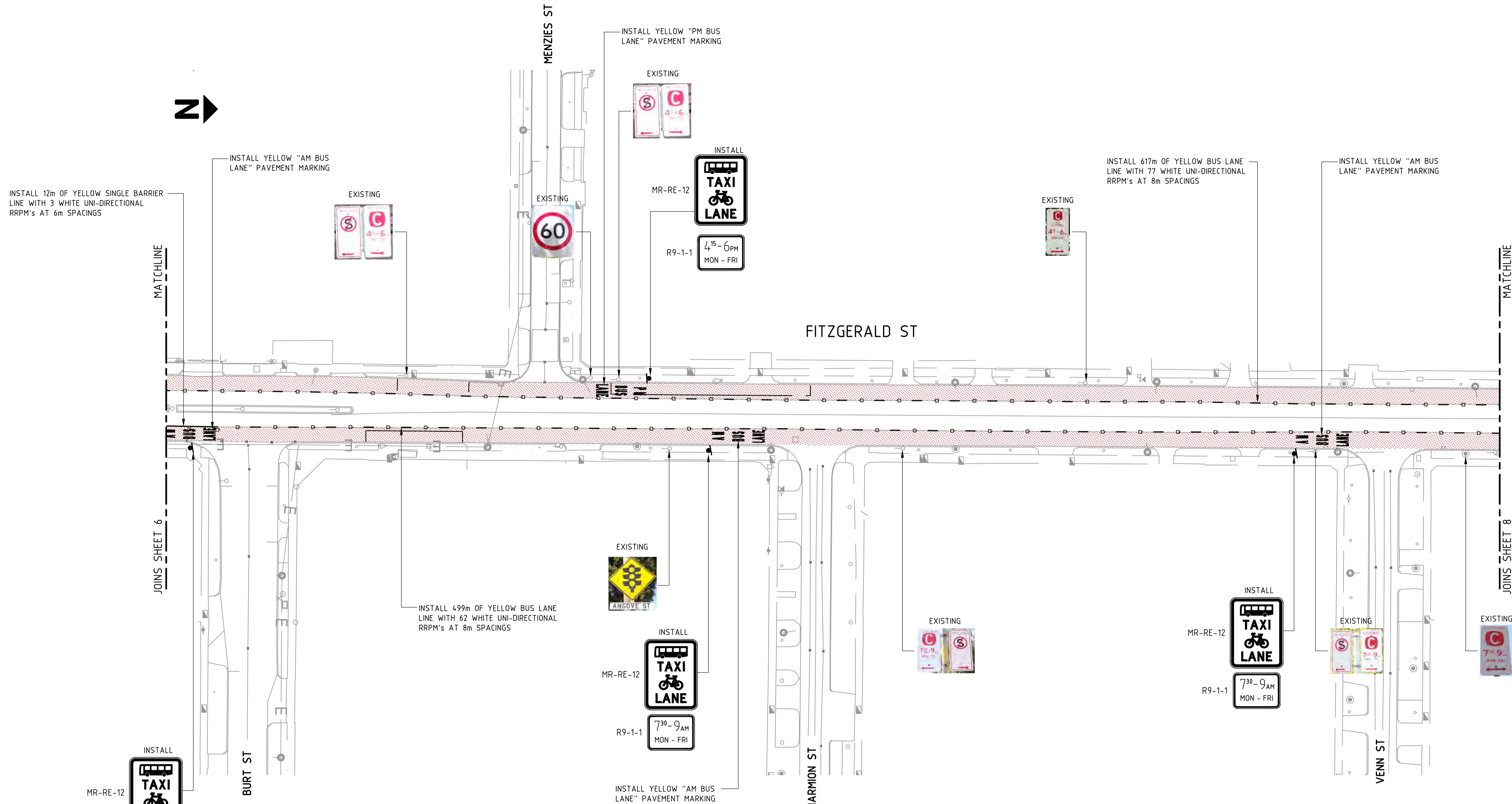
 ABN 91 007 660 317
 300 Murray Street, Perth
 Western Australia 6000

SCALE :	NTS (@ A1)
DATUM :	HORIZONTAL: PCG94
VERTICAL:	AHD71

DRAWN	S. FENTON
DESIGNED	W. BOWYER
CHECKED	W. MAKONI
APPROVED	A. SHAH

PTA DIVISION
 APPROVED FOR ISSUE
 PTA BRANCH MANAGER'S TITLE
 Date

FITZGERALD STREET
 BUS PRIORITY UPGRADE
 SIGNS AND PAVEMENT MARKING SHEET 6
 MRWA Drawing No: _____
 PTA Drawing No: _____
 REV : B



LEGEND

- SINGLE BARRIER LINE
- CONTINUITY LINE
- YELLOW BUS LANE LINE
- PARKING/BUS EMBAYMENT LINEMARKING
- STRAIGHT PAVEMENT ARROW
- STRAIGHT/LEFT OPTION PAVEMENT ARROW
- RRPM'S WHITE UNIDIRECTIONAL
- SINGLE POST SIGN (INTS)
- 'AM BUS LANE' PAVEMENT MARKING
- 'PM BUS LANE' PAVEMENT MARKING
- 'BUS LANE AHEAD' PAVEMENT MARKING
- TYPE 'A' CLEARWAY SIGN UPDATE - PM CHANGE
- TYPE 'B' CLEARWAY SIGN UPDATE - AM CHANGE
- TYPE 'C' PARKING SIGN UPDATE
- PAVEMENT TYPE 1

NOTES:

1. ALL SIGNS TO BE INSTALLED IN ACCORDANCE TO AS 1742.12
2. ALL BUS LANE PAVEMENT MARKINGS SHALL CONFORM TO MAIN ROADS STANDARD DRAWING 201031-0026 AND AS 1742.12
3. FOR LOCATION OF COUNCIL BOUNDARY CHANGE - REFER TO DRAWING OEC553-DW-CV-GEN-0003
4. CLEARWAY AND PARKING TIMES TO BE UPDATED BY PLATING OVER EXISTING SIGN WITH REVISED TIMES AS SHOWN ON LEGEND
5. ALL BUS LANE MARKING TO BE YELLOW
6. RAISED REFLECTIVE PAVEMENT MARKINGS TO CONFORM TO MAINROADS STANDARD DRAWING 201031-0026
7. FOR PAVEMENT ARROW DETAILS REFER TO MAINROADS STANDARD DRAWING 9531-2010
8. FOR PAVEMENT DETAILS REFER TO DRAWING PEC553-DW-CV-PAV-0001
9. ALL EXISTING BUS AND PARKING EMBAYMENT PAVEMENT MARKING TO BE REMARKED TO MATCH EXISTING.
10. ALL RUBBER SPEED BUMPS AFFECTED BY THE WORKS TO BE REPLACED TO MATCH EXISTING.



NOT FOR CONSTRUCTION

ISSUE LIST	CIRCUIT BOOK	SHEET
------------	--------------	-------

REV	DATE	DESCRIPTION	DRN	CHKD	APP
B	24.11.15	ISSUED FOR 100% REVIEW	SF	WM	AS
A	24.04.15	ISSUED FOR REVIEW	DK	GY	RG
AMENDMENT					
ORIG SIZE					
A1					

Kellogg Brown & Root Pty Ltd

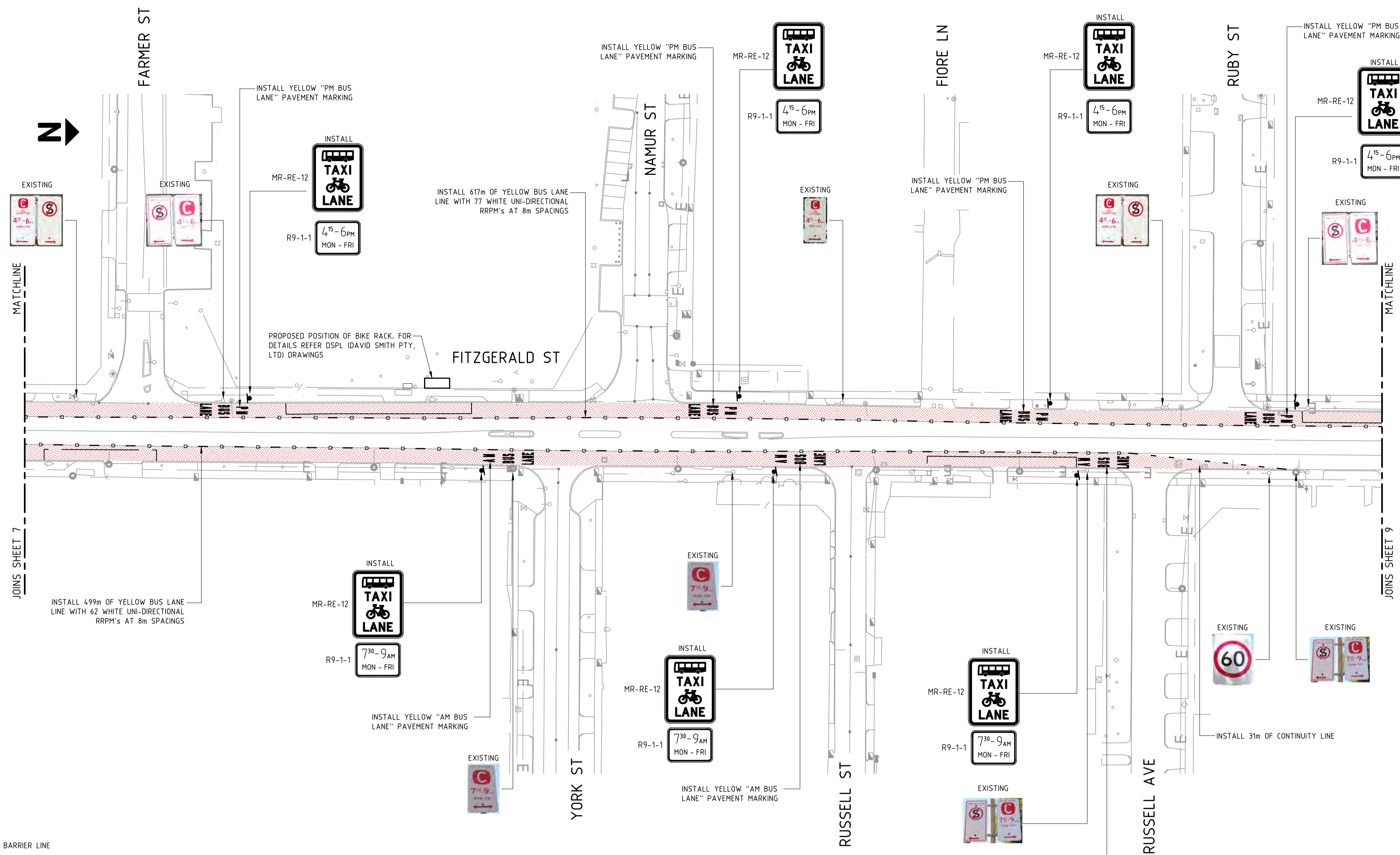
 ABN 91 007 660 317
 300 Murray Street, Perth
 Western Australia 6000

SCALE :	NTS (@ A1)
DATUM :	
HORIZONTAL :	PCG94
VERTICAL :	AHD71

DRAWN	S. FENTON
DESIGNED	W. BOWYER
CHECKED	W. MAKONI
APPROVED	A. SHAH

PTA DIVISION
 APPROVED FOR ISSUE
 PTA BRANCH MANAGER'S TITLE
 Date

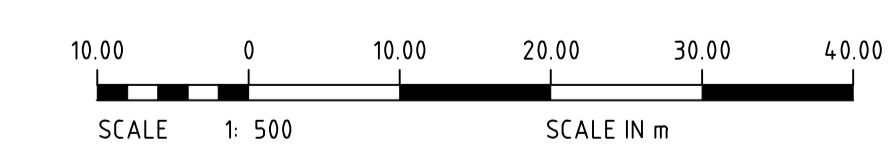
PTA Drawing No:
FITZGERALD STREET
BUS PRIORITY UPGRADE
SIGNS AND PAVEMENT MARKING SHEET 7
 MRWA Drawing No: REV : B



LEGEND

- SINGLE BARRIER LINE
- CONTINUITY LINE
- YELLOW BUS LANE LINE
- PARKING/BUS EMBAYMENT LINEMARKING
- STRAIGHT PAVEMENT ARROW
- STRAIGHT/LEFT OPTION PAVEMENT ARROW
- RRPM'S WHITE UNIDIRECTIONAL
- SINGLE POST SIGN (INTS)
- 'AM BUS LANE' PAVEMENT MARKING
- 'PM BUS LANE' PAVEMENT MARKING
- 'BUS LANE AHEAD' PAVEMENT MARKING
- TYPE 'A' CLEARWAY SIGN UPDATE - PM CHANGE
- TYPE 'B' CLEARWAY SIGN UPDATE - AM CHANGE
- TYPE 'C' PARKING SIGN UPDATE
- PAVEMENT TYPE 1

- NOTES:**
- ALL SIGNS TO BE INSTALLED IN ACCORDANCE TO AS 1742.12
 - ALL BUS LANE PAVEMENT MARKINGS SHALL CONFORM TO MAIN ROADS STANDARD DRAWING 201031-0026 AND AS 1742.12
 - FOR LOCATION OF COUNCIL BOUNDARY CHANGE - REFER TO DRAWING OEC553-DW-CV-GEN-0003
 - CLEARWAY AND PARKING TIMES TO BE UPDATED BY PLATING OVER EXISTING SIGN WITH REVISED TIMES AS SHOWN ON LEGEND
 - ALL BUS LANE MARKING TO BE YELLOW
 - RAISED REFLECTIVE PAVEMENT MARKINGS TO CONFORM TO MAINROADS STANDARD DRAWING 201031-0026
 - FOR PAVEMENT ARROW DETAILS REFER TO MAINROADS STANDARD DRAWING 9531-2010
 - FOR PAVEMENT DETAILS REFER TO DRAWING PEC553-DW-CV-PAV-0001
 - ALL EXISTING BUS AND PARKING EMBAYMENT PAVEMENT MARKING TO BE REMARKED TO MATCH EXISTING.
 - ALL RUBBER SPEED BUMPS AFFECTED BY THE WORKS TO BE REPLACED TO MATCH EXISTING.



NOT FOR CONSTRUCTION

ISSUE LIST	CIRCUIT BOOK	SHEET
------------	--------------	-------

REV	DATE	DESCRIPTION	DRN	CHKD	APP
B	24.11.15	ISSUED FOR 100% REVIEW	SF	WM	AS
A	24.04.15	ISSUED FOR REVIEW	DK	GY	RG
ORIG SIZE		AMENDMENT			
A1		PEC553-DW-CV-GEN-0009			

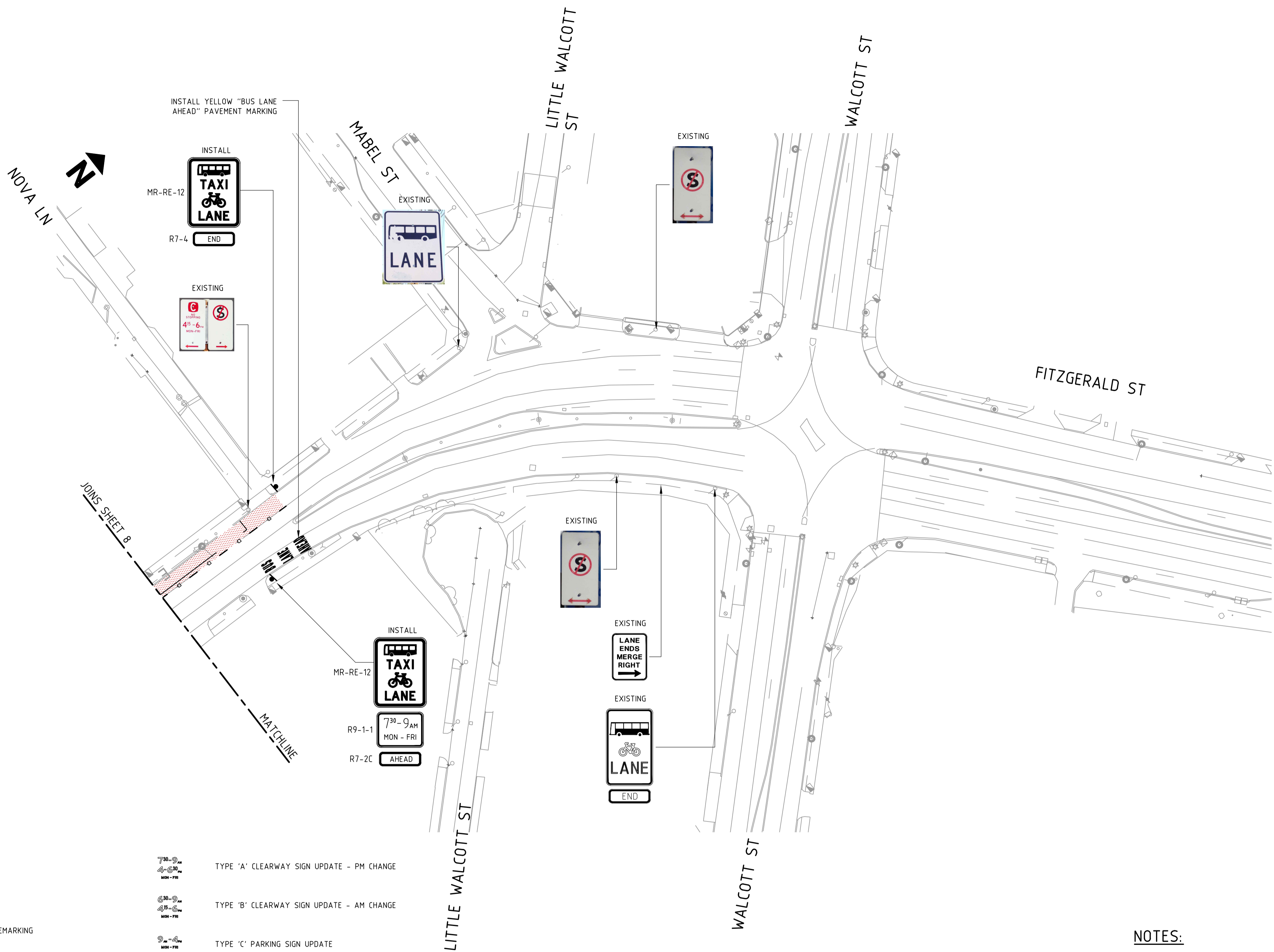
Kellogg Brown & Root Pty Ltd
KBR
 ABN 91 007 660 317
 300 Murray Street, Perth
 Western Australia 6000

SCALE :	NTS (@ A1)
DATUM :	HORIZONTAL: PCG94
VERTICAL:	AHD71

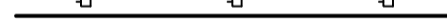










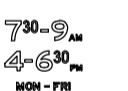
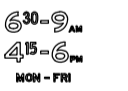
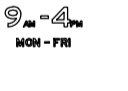

DRAWN	S. FENTON
DESIGNED	W. BOWYER
CHECKED	W. MAKONI
APPROVED	A. SHAH

PTA DIVISION
 APPROVED FOR ISSUE
 PTA BRANCH MANAGER'S TITLE
 Date

Government of Western Australia
 Public Transport Authority
 FITZGERALD STREET
 BUS PRIORITY UPGRADE
 SIGNS AND PAVEMENT MARKING SHEET 8
 MRWA Drawing No: _____
 PTA Drawing No: _____
 REV : B



LEGEND

-  SINGLE BARRIER LINE
-  CONTINUITY LINE
-  YELLOW BUS LANE LINE
-  PARKING/BUS EMBAYMENT LINEMARKING
-  STRAIGHT PAVEMENT ARROW
-  STRAIGHT/LEFT OPTION PAVEMENT ARROW
-  RRPM'S WHITE UNIDIRECTIONAL
-  SINGLE POST SIGN (NTS)
-  'AM BUS LANE' PAVEMENT MARKING
-  'PM BUS LANE' PAVEMENT MARKING
-  'BUS LANE AHEAD' PAVEMENT MARKING
-  TYPE 'A' CLEARWAY SIGN UPDATE - PM CHANGE
-  TYPE 'B' CLEARWAY SIGN UPDATE - AM CHANGE
-  TYPE 'C' PARKING SIGN UPDATE
-  PAVEMENT TYPE 1

NOTES:

1. ALL SIGNS TO BE INSTALLED IN ACCORDANCE TO AS 1742.12
2. ALL BUS LANE PAVEMENT MARKINGS SHALL CONFORM TO MAIN ROADS STANDARD DRAWING 201031-0026 AND AS 1742.12
3. FOR LOCATION OF COUNCIL BOUNDARY CHANGE - REFER TO DRAWING 0EC553-DW-CV-GEN-0003
4. CLEARWAY AND PARKING TIMES TO BE UPDATED BY PLATING OVER EXISTING SIGN WITH REVISED TIMES AS SHOWN ON LEGEND
5. ALL BUS LANE MARKING TO BE YELLOW
6. RAISED REFLECTIVE PAVEMENT MARKINGS TO CONFORM TO MAINROADS STANDARD DRAWING 201031-0026
7. FOR PAVEMENT ARROW DETAILS REFER TO MAINROADS STANDARD DRAWING 9531-2010
8. FOR PAVEMENT DETAILS REFER TO DRAWING PEC553-DW-CV-PAV-0001
9. ALL EXISTING BUS AND PARKING EMBAYMENT PAVEMENT MARKING TO BE REMARKED TO MATCH EXISTING.
10. ALL RUBBER SPEED BUMPS AFFECTED BY THE WORKS TO BE REPLACED TO MATCH EXISTING.



NOT FOR CONSTRUCTION

ISSUE LIST	CIRCUIT BOOK	SHEET

REV	DATE	AMENDMENT	DRN	CHKD	APP
B	24.11.15	ISSUED FOR 100% REVIEW	SF	WM	AS
A	24.04.15	ISSUED FOR REVIEW	DK	GY	RG
ORIG SIZE A1					


Kellogg Brown & Root Pty Ltd

KBR

ABN 91 007 660 317
300 Murray Street, Perth
Western Australia 6000

SCALE : NTS (@ A1)	DRAWN S. FENTON
DATUM :	DESIGNED W. BOWYER
HORIZONTAL: PCG94	CHECKED W. MAKONI
VERTICAL: AHD71	APPROVED A. SHAH

PTA DIVISION APPROVED FOR ISSUE PTA BRANCH MANAGER'S TITLE Date <small>This document must not be copied without PTA's written permission, and the contents thereof must not be imparted to a third party nor be used for any unauthorised purpose.</small>	MRWA Drawing No: REV : B
--	--

	PTA Drawing No:
FITZGERALD STREET BUS PRIORITY UPGRADE SIGNS AND PAVEMENT MARKING SHEET 9	
MRWA Drawing No:	REV : B