

9/08/2006

1:2369

The Town of Vincent does not warrant the accuracy of information in this publication and any person using or relying upon such information does so on the basis that the Town of Vincent shall bear no responsibility or liability whatsoever for any errors, faults, defects or omissions in the information.



BULLWER

STREET

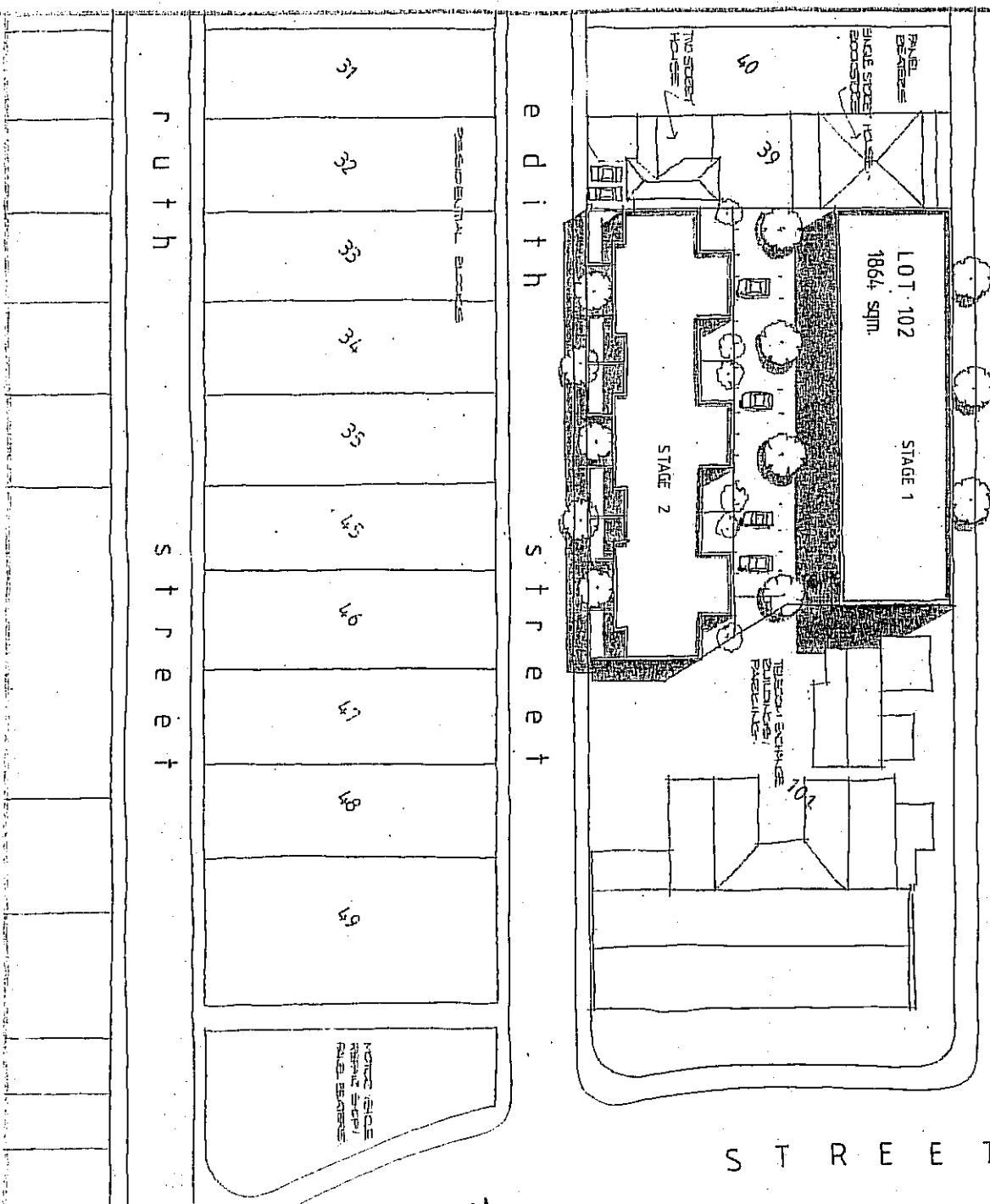
STREET

Edith Street

Ruth Street

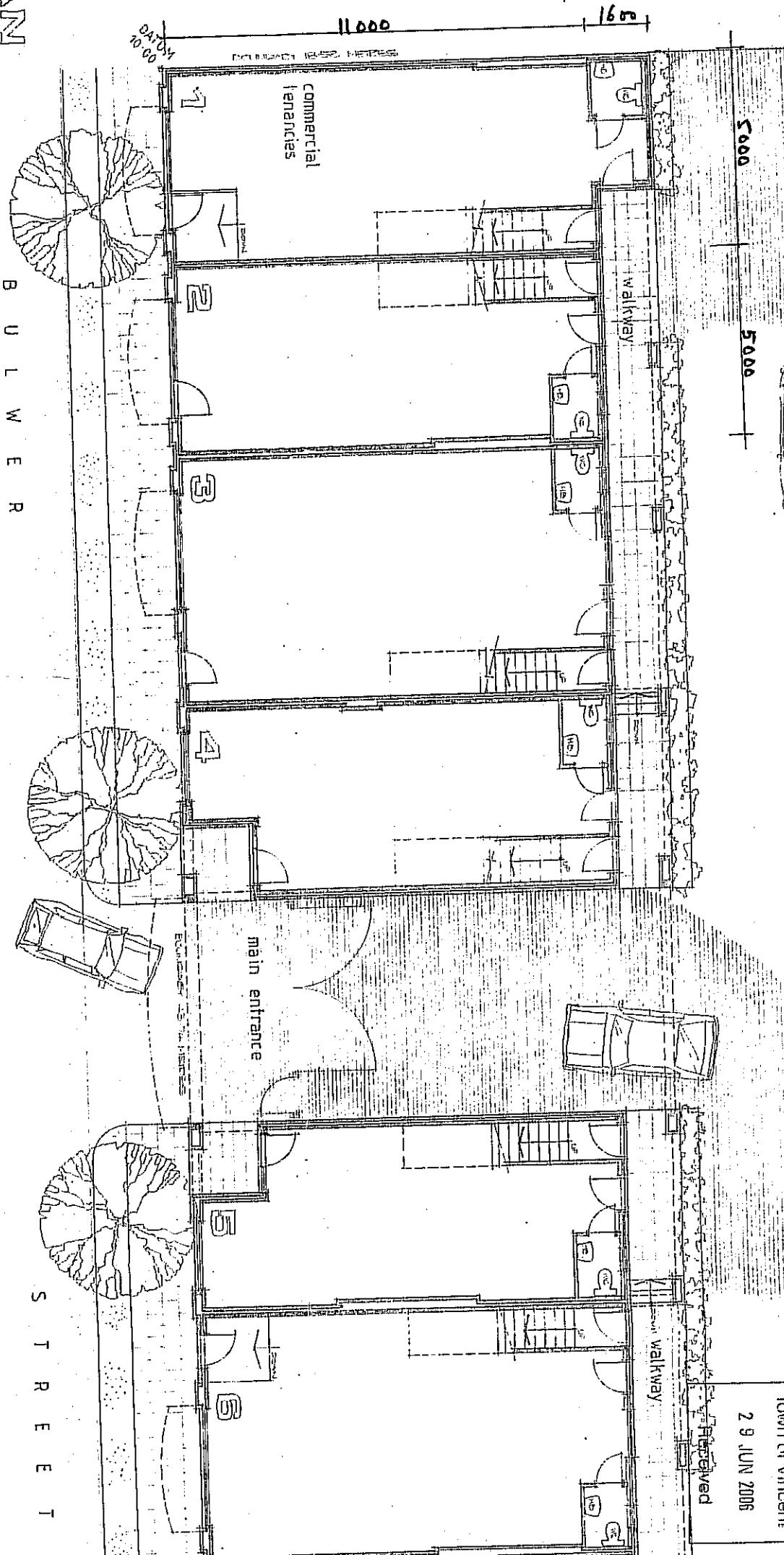
WILLIAM

Town of Virgani
29 JUN 2006
Received



MIXED USE DEVELOPMENT
EDITH STREETS
PERTH
THE

Scale: 1:100



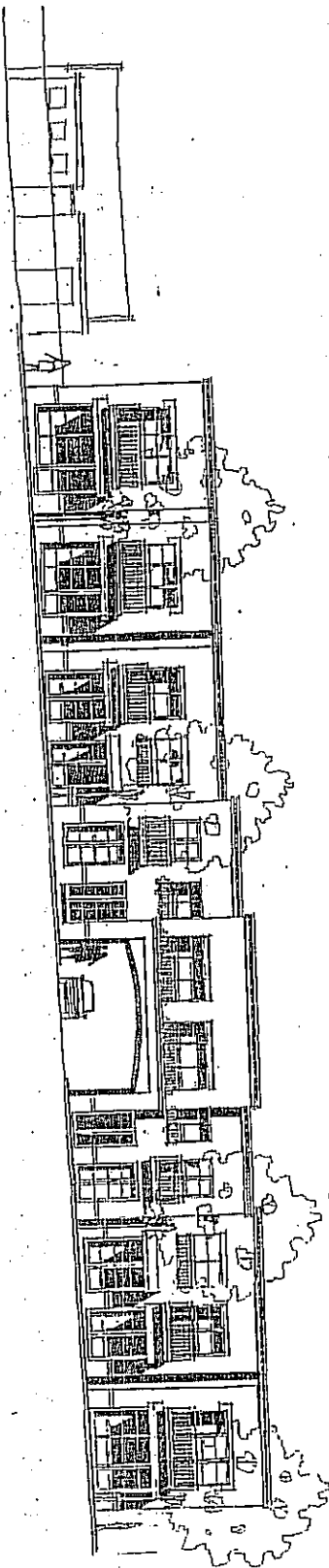
5000

5000

Town of Vincent
29 JUN 2006

Received

Elevator Shaft Elevation - Stage 1



Town of Vero, sent
25 JUN 2006
Received

FOR OTHER PARTS OF LOTS 8,9,10,11,12,13&14 SEE SHEET 3 OF 3

2 x Car bays
 for the
 subject
 tenancies

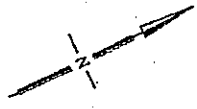
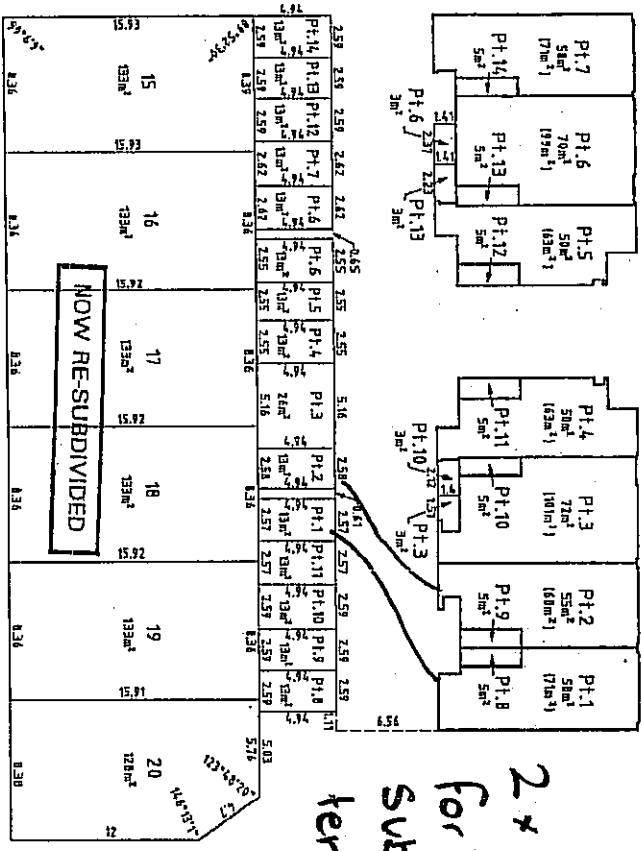
THE BOUNDARIES OF THE LOTS OR PARTS OF LOTS WHICH ARE SHOWN ON THE STRATA PLAN ARE THE INNER SURFACES OF THE WALLS, THE UPPER SURFACE OF THE FLOOR AND THE UNDER SURFACE OF THE CEILING, AS PROVIDED BY SECTION 195 OF THE STRATA TITLES ACT 1985, UNLESS NOTED OTHERWISE.

THE BOUNDARIES OF THE LOTS OR PARTS OF THE LOTS WHICH ARE SHOWN ON THE STRATA PLAN ARE THE EXTERNAL SURFACES OF THESE BUILDINGS, AS PROVIDED BY SECTION 204 OF THE STRATA TITLES ACT 1985.

WHERE TWO LOTS HAVE A COMMON OR PARTY WALL OR HAVE BUILDINGS ON THEM WHICH ARE JOINED, THE CENTRE PLANE OF THAT WALL, OR THE PLANE AT WHICH THEY ARE JOINED, IS THE BOUNDARY UNLESS NOTED OTHERWISE.

STRACTION OF LOTS EXTEND TO THE BOUNDARY EXTENDS BETWEEN 5 METRES BELOW AND 20 METRES ABOVE THE UPPER SURFACE OF THE BUILDING ON LOT 1 EXCEPT WHERE COVERED.

ALL ANGLES ARE 90° UNLESS OTHERWISE STATED



IT IS STRATA/SURVEY

WARNING: CREASING OR FOLDING WILL LEAD TO REJECTION

Parker
 Tuckey
 & Parker
 CONSULTING SURVEYORS

PTOP 4/53

00