



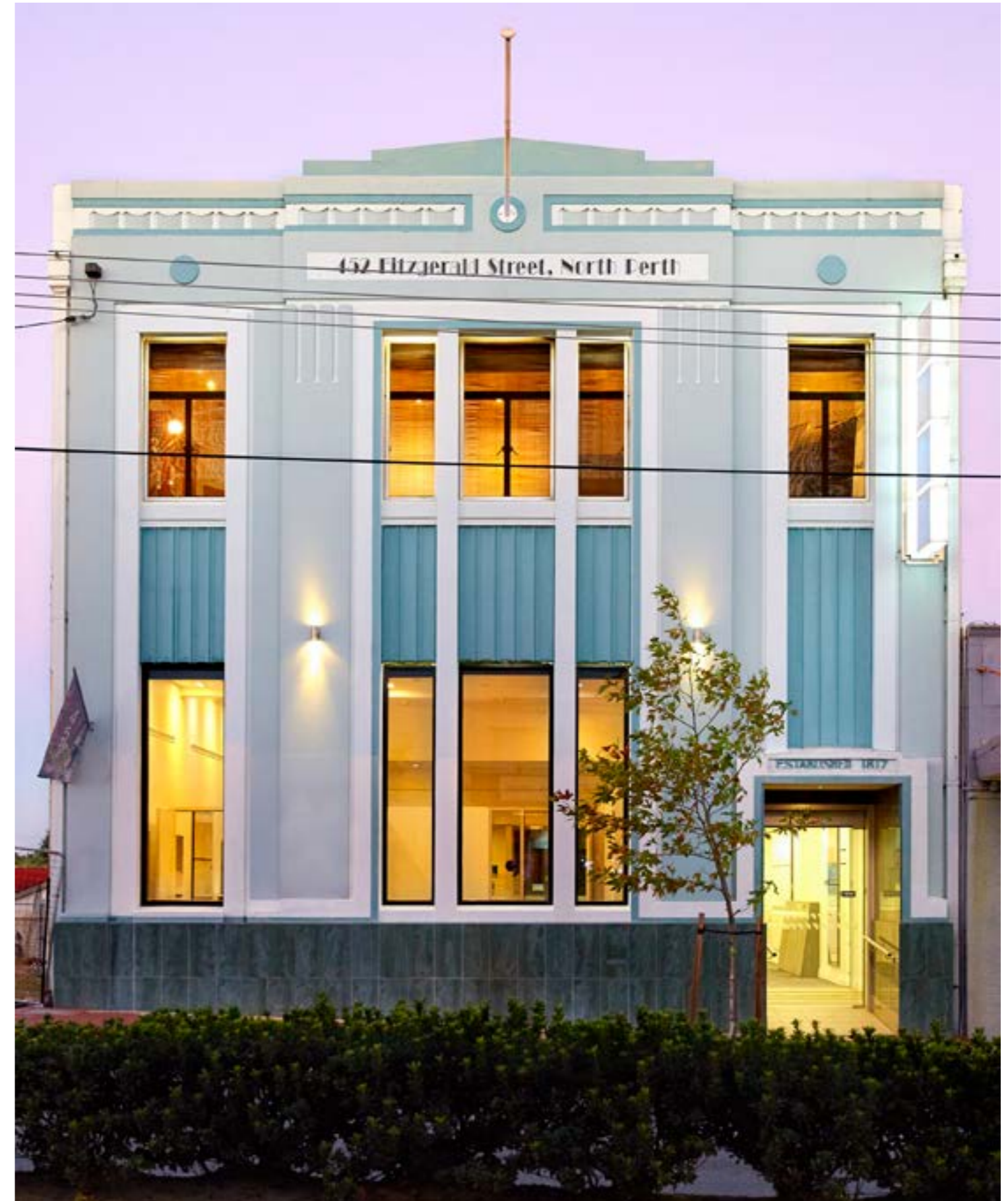
CITY OF VINCENT

# MUNICIPAL HERITAGE INVENTORY

AUGUST 2023

## CONTENTS

INTRODUCTION	3
THE MUNICIPAL HERITAGE INVENTORY	4
THE CENTRAL PERTH HERITAGE INVENTORY	43



## INTRODUCTION

The City of Vincent (City) has a rich and diverse heritage demonstrated within its built and natural environment.

The Municipal Heritage Inventory (MHI) is a document that records places in our City that have cultural heritage value.

The City's MHI (which also serves as its Heritage List) exists pursuant to the *Planning and Development (Local Planning Schemes) Regulations 2015* (Regulations) and provides statutory protection for heritage places. The City considers the management and protection of its diverse heritage assets to be a strong priority. Places identified as having cultural heritage significance to the locality and entered on the MHI are considered to be worthy of conservation. Statutory guidelines are put into place to ensure heritage is given priority consideration when evaluating planning applications

### WHAT MAKES A PLACE SIGNIFICANT?

Each place includes a **Statement of Significance** which is a specific and unique description of the key heritage qualities. A site or place is deemed to have heritage significance if it meets one or more of the following criteria:

- the place may have historical significance;
- the place may have been associated with an important individual or group of people;
- the place may be architecturally or aesthetically significant;
- the place may be a rare, fine or an intact example of its type;
- the place may demonstrate an important technical achievement; or
- the place may be highly valued by a community for social or spiritual reasons.

Details of the cultural heritage significance for each place is found on the Heritage Council of Western Australia's (HCWA) inHerit portal at [inherit.stateheritage.wa.gov.au/Public](http://inherit.stateheritage.wa.gov.au/Public).

### HOW ARE PLACES ASSESSED FOR HERITAGE SIGNIFICANCE?

Places are assessed in accordance with Local Planning Policy 7.6.2 Heritage Management - Assessment. This criteria is based on the principles outlined within the Burra Charter and well as the HCWA's Guidelines for the Assessment of Local Heritage Places.

### STATE HERITAGE REGISTER OF HERITAGE PLACES

The State Register of Heritage Places (State Register). is a statutory list of places that represent the story of Western Australia's history and development.

Entry in the Register is reserved for places of State cultural heritage significance and is the highest recognition afforded at the State level. Heritage places are entered in the State Register after an assessment and registration process which includes extensive consultation with owners, local governments and other stakeholders.

If a development application involves a place listed on the State Register, comments from the HCWA will be sought and obtained prior to any decision being made by the City.

### MUNICIPAL HERITAGE INVENTORY MANAGEMENT CATEGORIES

All places listed in the MHI are assigned a Management Category by the City which defines their level of significance and protection.

#### Management Category A - Conservation Essential

Places within this category are essential to the heritage of the City and also contain a high degree of integrity and authenticity. A number of properties within this category all also listed within the State Register.

#### Management Category B - Conservation Recommended

Places within this category contribute to the heritage of the City. They have some altered or modified elements, that do not necessarily detract from the overall significance of the place.

### CENTRAL PERTH HERITAGE INVENTORY MANAGEMENT LEVELS

The Central Perth Heritage Inventory (CPHI) comprises a list of places of cultural heritage significance within the former Central Perth Redevelopment Area. They are classified into Heritage Precincts and Heritage Places and are assigned the following levels.

#### Historic Precinct of State Significance.

#### Historic Precinct of Local Significance.

**Level 1** - Place of State Significance.

**Level 2** - Place of Local Significance.

**Level 3** - Place of Lesser Significance.

**Level 4** - Historic Site.

### DEVELOPING A HERITAGE PLACE

The State Register, MHI and CPHI provides listed places with statutory protection, meaning that development approval is required for any proposed modifications, additions or demolition. Applications will be assessed against the following state and local planning policies:

- State Planning Policy 3.5 Historic Heritage Conservation.
- State Planning Policy 7.3 Residential Design Codes.
- Local Planning Policy 7.1.1 Built Form.
- Local Planning Policy 7.6.1 Heritage Management - Guidelines for Heritage and Adjacent Places.
- Local Planning Policy: Heritage Area Guidelines.



PLACE NAME	PROPERTY ADDRESS	STATE REGISTERED PLACE	MANAGEMENT CATEGORY	INHERIT PLACE NUMBER	STATEMENT OF SIGNIFICANCE
EAST PERTH					
East Perth Power Station	11 Summers Street	✓	A	3318	<p>East Perth Power Station, a former coal-fired (and for a short time oil powered) power station consisting of the Power Station buildings, plant and equipment, has a high level of cultural heritage significance for the following reasons:</p> <ul style="list-style-type: none"> <li>the place is rare as a large-scale thermal power station retaining its plant and equipment, constructed prior to the end of World War One, being one of only two such places in Australia and a small number in the world;</li> <li>the place is rare as a single facility retaining several generations of generators, spanning almost forty years, and contains one of the most comprehensive in situ collection of steam turbine generating units in the country;</li> <li>the place was the only government operated electricity utility supplying the metropolitan area from 1916 to 1951, and the largest power generating facility in the State until South Fremantle Power Station began operation in 1951;</li> <li>the frequency changer set is unique in Australia, and rare in a world context;</li> <li>the place is a regional landmark viewed from the river, the railway and the Graham Farmer Freeway, and an eastern entry statement to the city of Perth;</li> <li>the place was the first State government operated public electricity utility in Australia, constructed as one of a number of State government enterprises and public utilities established under the 1911-1916 government of John Scaddan MLA;</li> <li>the place is a good example of a complex of utilitarian industrial structures, featuring distinctive interior spatial quality in the station turbine rooms with some Art Deco detailing;</li> <li>the place, as a large coal-fired thermal power station, was important in the development of the State's coal industry, based at Collie; and,</li> <li>as a major public utility, the place facilitated industrial development in Western Australia up to 1951, and was an important influence in raising living standards in the Perth metropolitan area and the south-west of the State, as well as employing a numerically significant workforce during its construction and its 65 year operational life.</li> </ul> <p>While several of the buildings and items of plant and equipment have a high level of significance for aesthetic, historical or technological values, all elements have significance in being part of the overall complex, and the significance of individual elements is enhanced by their overall context and relationship with each other in their original locations. The complex has significance for its educational potential as a teaching and conservation site.</p>
St Francis Xavier Church Catholic School	19 West Parade East Perth		B	18069	<p>St Francis Xavier Catholic School is an Interwar primary school, located with St Francis Xavier Church, serving the comparatively poorly serviced neighbourhood east of Lord Street. It extends the already strong Catholic educational presence within the district. It is comparable, albeit modest in accommodation standards, with Catholic neighbourhood primary schools developed in other parts of the region in the Interwar period, such as Nedlands and Claremont.</p>
East Perth Railway Station	116 West Parade East Perth		B	8769	<p>The Public Transport Centre is a singular example of the Late Twentieth Century Brutalist style, designed by a notable architectural practice of the day. The place set new design standards for railway facilities and interior architecture . It is a landmark in the area, made more visible</p>
House	135-137 Joel Tce East Perth		B	18019	<p>The building has some aesthetic value, which is expressed through its design, size, massing, scale and prominent position along Joel Terrace. The place has some rarity value as an example of a substantial two-storey Federation Queen Anne dwelling within the Town of Vincent, of which there are few remaining.</p>

PLACE NAME	PROPERTY ADDRESS	STATE REGISTERED PLACE	MANAGEMENT CATEGORY	INHERIT PLACE NUMBER	STATEMENT OF SIGNIFICANCE
Preston Flats	264 Stirling Street		B	8747	Preston Flats are a representative example of the Interwar Contemporary style, influenced by Functionalism, the clean air movement and the need for individual identity for each unit. The flats demonstrate a considered and sophisticated response to a way of life promoted during the 1930s.
<b>HIGHGATE</b>					
House	9 Chatsworth Road		B	6116	The place at 9 Chatsworth Road is a good example of the Federation Queen Anne bungalow style, built on a double block, designed to address both street and side garden, demonstrating that it was a residence for persons of substance.
Chatsworth Flats	39-41 Chatsworth Road		B	17986	Chatsworth Flats are a good example of Interwar Contemporary style, with some Moderne influences in the abstracted rendered details. The place demonstrates a model of walk up flats which were a popular concept as a new form of urban living in the Interwar period, located on public transport routes and close to facilities.
Terrace of Four Homes	47,49,51,53 Chatsworth Street		B	6117	The terraces are a fine and intact example of the Federation Queen Anne style, which forms a distinctive streetscape element and demonstrate a way of life from the early 1900s
House	77 Chatsworth Road		A	8701	The house at No. 77 Chatsworth Road is an intact and distinctive example of the Federation Queen Anne style designed and constructed for Joseph Collins, a professional person, possibly to the design of Henry Prockter. Located on the corner of Chatsworth Road opposite Hyde Park, it is an important townscape element.
Sewerage Vent, Hyde Park	William Street Highgate	✓	A	23781	<p>Apart of the Metropolitan Sewerage Vents (INHERIT ID 23992), Metropolitan Sewerage Vents, , a collection of six circular metal ventilation shafts approximately 9-15 metres (30-50 feet) high, with decorative cast iron bases, has cultural heritage significance for the following reasons:</p> <ul style="list-style-type: none"> <li>the group provides rare evidence of the earliest establishment of a deep sewerage system for Perth (operational from 1911), a significant milestone in the development of Perth as a modern city;</li> <li>the group is a small sample of surviving c.1911-1930 sewerage ventilation shafts, a once-common piece of infrastructure that appears to have largely been removed and/or forgotten across the country; and,</li> <li>the group comprises six representative examples of the standard natural ventilation shafts erected for the Perth and Fremantle sewerage systems from 1911 to 1930, when decorative but functional cast iron work was used for these items of public infrastructure.</li> </ul>
New Court Flats	33-35 Mary Street		B	18036	New Court flats, at 35 Mary Street, are good examples of the Interwar Contemporary style, with some Art Deco detailing. The flats demonstrate the brief period between the deprivation of the Depression and the austerity of building material shortages as the influence of World War Two was felt.

PLACE NAME	PROPERTY ADDRESS	STATE REGISTERED PLACE	MANAGEMENT CATEGORY	INHERIT PLACE NUMBER	STATEMENT OF SIGNIFICANCE
Sacred Heart Church, Halls & Presbytery	40-42 Mary Street	✓	A	2183	<p>Sacred Heart Catholic Group, Highgate, comprising Sacred Heart Catholic Church (1906, 1928, 1954), Sacred Heart Church Hall (1938), the Monastery of Our Lady of the Sacred Heart (1899; 1923; 1933; 1937), Sacred Heart Primary School (1914), forecourt and Moreton Bay figs to the Church, gardens, shelters, and boundary walls, has cultural heritage significance for the following reasons:</p> <ul style="list-style-type: none"> <li>the buildings, grounds and boundary walls of the place collectively form an important precinct of ecclesiastical buildings dating from the turn of the twentieth century; the place housed the Order of Our Lady of the Missions' first Australian branch and school, established at the site in 1897, and illustrates the Order's commitment to the education of children in Western Australia and to other forms of pastoral care; the place was founded as a result of efforts from the late 1890s by local Catholics to establish a Catholic Church and School in the area as the State's population boomed, and is representative of the development of Catholic Education in Western Australia;</li> <li>the Monastery of Our Lady of the Sacred Heart is an excellent example of a large, well composed convent school building featuring elements from the Federation Free and Inter-War Gothic styles; Sacred Heart Catholic Church is an excellent example of a substantial stone church in the Federation Gothic style; the place, including the simple, formally planned garden entry to the convent and Moreton Bay figs in the Mary Street forecourt of the Church, is a significant streetscape element on Mary and Harold Streets in Highgate; the place is representative of a convent and school built c. 1900 and illustrates the principal characteristics and planning of this type of ecclesiastical complex;</li> <li>Sacred Heart Catholic Church and Sacred Heart Primary School were designed by prominent architect Richard Dennehy, the original Convent and School buildings were designed by Edgar Henderson, and the 1923, 1933 and 1937 additions to the Convent and School, the 1954 extensions to the Church, and the 1938 Hall were designed by his son Edgar Le B Henderson;</li> <li>the Sacred Heart Primary School (1914) is the only known example in the State of a parish owned school located in the inner city, which dates from the early twentieth century and still functions for its intended purpose; constructed in 1923, the Chapel was the first in Australia dedicated to the 'Little Flower', the venerable Sister Teresa of the Child Jesus;</li> <li>the place is highly valued by the school community, past and present students and teachers, and the Sacred Heart parish; and</li> <li>Sacred Heart Catholic Church was one of the first Catholic churches in the State to implement changes resulting from liturgical practices recommended by the Second Vatican Council (1962-1965) including modifying the sanctuary to accommodate liturgical changes.</li> </ul>
Alisa Craig & Mount View, Semi Detached Dwellings	70-72 Mary Street		B	18081	<p>The semi detached pair, called Ailsa Craig and Mount View, at No.70-72 Mary Street, are fine, intact and representative examples of the Federation Italianate style applied to the semi-detached model of inner city housing.</p>
St Albans Church	449 Beaufort Street	✓	A	2178	<p>St Albans Church is a fine example of the early ecclesiastical architecture of J.J. Talbott Hobbs in the late 1880s and 1890s. Its Romanesque style marks a departure from the Gothic style previously preferred for Anglican churches. The church served Highgate Hill, the first suburb developed north of Perth. It was extended within a decade of its original construction. It has provided religious support to the Highgate Hill community and for parishioners in the local community for over 110 years.</p>
Three Homes (fmr)	453 & 455 Beaufort Street & 2 St Albans Avenue		B	17968	<p>The three former houses at Nos. 451, 453 and 455 Beaufort Street, are a fine group consisting of representative examples of the Federation Bungalow style. The places were consciously designed as a cohesive group to contribute to the streetscape quality and character. The places now demonstrate the suitability of the conversion of such a group for commercial purposes.</p>
Venus Art Gallery Building	476 Beaufort Street		A	3263	<p>The corner shop, known as RMEH, is a rare and fine intact exemplar of the Federation Italianate style, which is another corner landmark along Beaufort Street. It has been used continuously for commercial functions, of various kinds, since its construction.</p>

PLACE NAME	PROPERTY ADDRESS	STATE REGISTERED PLACE	MANAGEMENT CATEGORY	INHERIT PLACE NUMBER	STATEMENT OF SIGNIFICANCE
Shops	489 Beaufort Street		A	17969	The double storey retail premises at Nos. 489-491 Beaufort Street are a fine example of the Federation Italianate style within the Mount Lawley Centre with its strong street presence. The tenancy history of the place informs of the changing demography and multiculturalism of the area since the late 1890s.
Shops	515 Beaufort Street		B	8587	Shops at No. 515 Beaufort Street, located opposite Queens Tavern, have been an integral part of the Beaufort Street retail strip for almost a century. Constructed as fine examples of the Federation Free Classical style, subsequently adapted with fine Art Deco shop fronts, the place with its standard cantilever verandah of the 1950s and 1960s, demonstrates the changing nature and fortunes of the Beaufort Street retail strip.
Queens Hotel	520 Beaufort Street		A	2426	The Queen's Hotel was a major hotel development in 1898, located at the heart of the burgeoning Mount Lawley town centre on one of Perth's early tramlines radiating from central Perth. It was unusual in the largesse of its two storeyed colonnade cum verandah set back from the street. The refurbished Queens Tavern was a landmark development of the early 1990s, by Michael Patroni, as part of the Matilda Bay phenomenon, which re-established it as the social heart of Mount Lawley. The place has now continuously served the local and wider community as a public house/hotel for more than a century.
Hyde Park	Vincent Street	✓	A	4634	<p>Hyde Park, a large public park of approximately 15 1/2 hectares, bounded by Vincent, Glendower, Throssell and William streets, in the Arcadian style with mature trees and sloping lawns leading down to two central lakes, has cultural heritage significance for the following reasons:</p> <ul style="list-style-type: none"> <li>the place is strongly identified and highly valued by the local and regional community as a venue for passive recreation, social interaction and as a venue for fairs, festivals, public and private ceremonies;</li> <li>the place is important as a source of aesthetic and recreational enjoyment for the community; the place has scientific and historic importance as a remnant of the former chain of wetlands that extended north of Perth and as an example of the development of these wetlands as public parks at the end of the nineteenth century; the place is important for its association with the Aboriginal tribes who lived there prior to and during the early years of European settlement and with the early European settlers including miners en route to the Kalgoorlie goldfields who also camped there;</li> <li>the place is important for its collection of mature introduced trees, in particular the Plane Trees (<i>Planatus acerifolia</i>), encircling the lakes, the Moreton Bay Figs (<i>Ficus macrophylla</i>) and Port Jackson Figs (<i>Ficus rubiginosa</i>) in the lawn areas, the Pines (<i>Pinus</i>) around the boundaries and the Jacarandas (<i>Jacaranda mimosifolia</i>) in the south-east corner. The more unusual species include the Swamp Cypress (<i>Taxodium distichum</i>), Red Cedar (<i>Toona australis</i>) and Bunya Pine (<i>Araucaria bidwillii</i>) and remnant indigenous flora (<i>Eucalyptus</i> and <i>Melaleuca</i>); and</li> <li>the place is important as an example in good condition and with a high degree of integrity of the Arcadian landscape style as applied to a large public park.</li> </ul> <p>Recent toilet blocks, park furniture and signage are of little heritage value and recent limestone-edged planted beds and ornate paving disrupt the original pathway system.</p>
Harley Street Heritage Area	Harley Street		No category	25927	Harley Street has moderate aesthetic value through its dominant display of single storey residences constructed in the Federation style of architecture.
Vasse Terrace	7-13 Harley Street		B	8716	Vasse Terrace is a rare and fine example of four attached dwellings in the Federation Italianate style, with a high level of integrity. The Terrace makes a significant contribution to the streetscape and character of the area and informs of a way of life at the end of the nineteenth century
House	21 Harley Street		B	18012	The house at 21 Harley Street is an exemplar of a comparatively early and elaborate Federation Queen Anne bungalow with a exceptionally high level of integrity, complete to the front fence and garden.
House	24 Harley Street		B	11439	The house at No. 24 Harley Street is a fine and representative example of the Federation Georgian style, which directly addresses the street and has retained a high level of integrity.
Christian Brothers School (fmr)	131 Harold Street		B	2179	St Marks International College (former Christian Brothers High School) is a fine example of a private school in the Interwar Georgian Revival style. The site has been used for church and educational purposes for over a century. It has associations with the Sacred Heart of Jesus, St Margaret Mary Alacoque, the Christian Brothers and Bishop Gibney.

PLACE NAME	PROPERTY ADDRESS	STATE REGISTERED PLACE	MANAGEMENT CATEGORY	INHERIT PLACE NUMBER	STATEMENT OF SIGNIFICANCE
Sir George Shenton's Highgate Estate	16-36 Lincoln Street		B	18028	Sir George Shenton's Highgate Estate has considerable social significance because of its associations with these highly influential figure of the Late Colonial and early Federation period. The estate demonstrates a range of dwelling types within variations of the Federation Bungalow style, giving a coherence lacking in the contemporary John Hyde Estate.
Houses	54-66 Lincoln St		A	8721	The cottages, known as the 'police cottages', are a rare row of closely set detached cottages in the Federation Georgian style, dating from the late years of the nineteenth century. The row has retained a high level of integrity and is important for the streetscape and character of the area. Located opposite the Highgate Hill Police Station it has associations with police officers and their families. The cottages demonstrate a way of life no longer practiced
Lincoln Street Ventilation Stack	57 Lincoln Street	✓	A	3137	<p>Lincoln Street Ventilation Stack comprising a thirty-eight metre high brick and render sewer vent in the Inter-War Art Deco style, surrounded by a low wall, and with a chamber room attached, has cultural significance for the following reasons:</p> <ul style="list-style-type: none"> <li>the place is an excellent example of the Inter-War Art Deco style applied to an industrial structure; the place is the only known example of a brick and render sewerage ventilation tower in Perth, making it a unique and highly distinctive landmark;</li> <li>the place was an important step in the development and expansion of Perth's metropolitan sewerage system during the 1930s and 1940s. The failure of the place to function with its intended use presented the opportunity for the further development of innovative sewerage management, arising from research into the viable management of hydrogen sulphide gas stimulated by the place's closure;</li> <li>the place is associated with Russell Dumas, a notable Western Australian engineer and later director of the Public Works Department, who contributed to the development of the metropolitan sewerage system and other public works projects in the early 20th century;</li> <li>the place is an important example of the contribution made by the sustenance workforce to the development of Perth's infrastructure during the time of the Great Depression; and</li> <li>The use of the place as a covert antenna during World War II, and later as a police base, is important in ensuring its continued use.</li> </ul>
House	114 Lincoln Street		B	8722	The house at 114 Lincoln St is a fine representative example of a Federation Italianate residence, and makes a substantial contribution to the streetscape. It is historically important for the associations with John Hyde and the development of Lincoln Street.
John Hyde's Estate	102-118 Lincoln Street		B	18030	John Hyde's Estate has considerable social significance because of its associations with the John Hyde family. Its diverse array of styles and house types illustrates the diversity of Federation period development and the application of pattern book styles to a subdivision without the need to provide a coherent estate character.
McBrides House and Cooke's Houses	94, 96 & 96A Lincoln Street		B	18029	These two dwellings constructed in 1893 in the Late Colonial Style are intact and good examples of their style featuring facet bay windows and associated mitred hip roof form and brick quoining. The two dwellings contribute to the quality and diversity of Lincoln Street and were both associated with businessman whom resided and owned the subject dwellings at the time of construction in 1893 until at least the inter-war year.
Pair of Townhouses	179-181 Lincoln Street		B	18033	The pair of townhouses at 179-181 Lincoln Street are exemplars of inner city townhouses, responding to the existing lot conditions, and won the RAIA (WA Chapter) George Temple Poole Prize in 2000.
House (Lochindorb)	166 Lincoln Street		B	18032	Lochindorb is a fine although eclectic example of the Federation Arts and Crafts style. It demonstrates intricate detailing which is more decorative than later Arts and Crafts examples. The place has social significance for close associations with McCallum Smith, newspaper proprietor (Sunday Times) and member of the Legislative Assembly



PLACE NAME	PROPERTY ADDRESS	STATE REGISTERED PLACE	MANAGEMENT CATEGORY	INHERIT PLACE NUMBER	STATEMENT OF SIGNIFICANCE
Serbian Orthodox Church of Saint Sava	31 Smith Street	✓	A	8746	<p>Serbian Orthodox Church of St. Sava comprises a Post-War Ecclesiastical style rendered masonry church (1954-55), with a western bell tower (1974), and a separate brick and tile Sunday School building (1962), with additions (1971, 1984), situated in landscaped gardens, and has cultural heritage significance for the following reasons:</p> <ul style="list-style-type: none"> <li>the place is an outstanding example of a church designed in the Christian Orthodox Church tradition whereby all elements, including the ornate art works of the interior, the finely painted iconostasis, frescoes, mosaics, gold chandeliers and timber furniture, including a throne, are of religious symbolic importance; and as such, are integral to the significance of this place;</li> <li>the place is indicative of the arrival of East European migrants to Western Australia in the post World War Two period, and the subsequent establishment of migrant communities, introduction of their cultural activities, religious observance and architectural traditions;</li> <li>the place is valued by the Serbian community for religious, spiritual, aesthetic, social and educational reasons, and the use of the Serbian language in the liturgy of the church is important to the cultural identity of Serbian community of Western Australia;</li> <li>the place is the second oldest Serbian Orthodox Church in Australia, and the first to be built in Western Australia; the distinctive curved form of the church, with its domed roof and stark white walls, set in landscaped gardens has an overall aesthetic quality that is both visually pleasing and peaceful; and</li> <li>the place is associated with Archpriest Father Petar Rados OAM, who was instrumental in establishing the Serbian Orthodox community, parish and church in the early 1950s, and continues to conduct services at the church today</li> </ul>
Three Houses	41,43,47 Smith Street		B	18052	This intact group of three Federation / Georgian Style dwellings present aesthetic value to Smith Street. The dwellings have historic values as good examples of the types of dwellings constructed during the Gold Rush phase of development in Perth, in particular in the Highgate Hill area.
House	6 St Albans Avenue		B	8743	The house at 6 St. Albans Avenue is a fine example of a Federation Queen Anne bungalow, which retains its handsome original decoration, and is a fine neighbour to St Alban's Church.
Progressive Spiritualists Church	388 Stirling Street		B	8748	The Progressive Spiritualists Church is a good example of a church constructed in the Postwar Gothic/Austerity style, which is severe and contemplative in character. It demonstrates the diversity of religious expression within the Vincent community.
Plunkett Home	111 Wright Street		A	17616	The place is a good example of the Federation Bungalow style of architecture, contributing to the Wright Street landscape. The place has historic value through its long and continual association with the Plunkett family, as it was their family home and in close proximity to the site of the original Plunkett Joinery. The Plunkett Homes business played a significant role in the development of Perth's housing construction and design.
Gibney House (fmr)	50 Vincent Street		A	13033	Bishop Gibney's House (Lourdes) at No. 50 Vincent Street is a fine example of the Federation Arts & Crafts style and a sophisticated example of balanced asymmetrical design. Lourdes has close associations with its original owner Bishop Gibney and the development of the area, particularly the Sisters of Our Lady of the Missions and the Redemptorist Monastery. More latterly it has associations with the Highgate Hill parish and the Franciscan Friars.
Silver Chain Nursing Association	19 Wright Street		A	11451	The Silver Chain Nursing Association is a fine example of the Federation Queen Anne bungalow style. The Association grew from community concern for poor children into a popular movement encompassing all levels of Perth society. This movement led to the establishment of the Infant Health Association and infant health centres, then diversified into aged care when the house was opened as a hostel in 1916, with purpose built cottages from 1920. The organisation grew, under Vice Regal patronage, through various nomenclatures, until 1963 when it became known as the Silver Chain Nursing organisation.
Lincoln Flats	144 Lincoln Street		B	18031	Lincoln Flats demonstrates a contemporaneous way of flat life in the 1940s, by one of the notable architect proponents of the new urban style of living, David Krantz. It is a fine representative example of the Interwar Contemporary style. Its form dramatises the corner location

PLACE NAME	PROPERTY ADDRESS	STATE REGISTERED PLACE	MANAGEMENT CATEGORY	INHERIT PLACE NUMBER	STATEMENT OF SIGNIFICANCE
Group of Houses	57, 59, 63, 65, 67, 69, 71, 73 & 75 Harold Street		B	18013	This group of modest Federation period houses, has a high level of intactness apart from the adaptations to No. 75. There are six Federation Bungalows set between a Federation Italianate single fronted house and a Postwar Immigrant Nostalgic conversion of a Federation Bungalow. It is one of the largest cultural groups of individual residences in the district.
Four Terraces	47 - 53 Chatsworth Road		B	6117	The terraces are a fine and intact example of the Federation Queen Anne style, which forms a distinctive streetscape element and demonstrate a way of life from the early 1900's
LEEDERVILLE					
City of Vincent Administration Building	244 Vincent Street		A	18063	The Town of Vincent Administration Building marks the establishment of the Town of Vincent as a new local authority, following the breakup of the greater City of Perth. The Administration Building is a fine example of Late 20th Century International style, by well known Perth architect Peter Hunt, and was the recipient of a Civic Design Commendation from the WA Chapter of the RAIA.
Britannia Road Reserve	41 Britannia Road		B	17976	The part Lake Monger Reserve has possible Aboriginal heritage significance as well as historical post-settlement significance. The reserve was associated with Lake Monger and its several roles in the lake system across the north of Perth. The former Commonwealth Games Velodrome is located within it. In a relatively closely knit urban fabric it is an aesthetically pleasing public space that is highly valued by the community.
Commercial Building	150-154 Oxford Street		B	8733	The commercial premises at No. 150-154 Oxford Street are a substantial commercial/residential building in the Federation Italianate style that demonstrates an inner urban form of residential activity no longer practiced. It is a landmark on the prominent Oxford/Vincent Street corner and contributes to the streetscape character of the town centre.
Leederville Post Office	156 Oxford Street	✓	A	2203	The commercial premises at No. 150-154 Oxford Street are a substantial commercial/residential building in the Federation Italianate style that demonstrates an inner urban form of residential activity no longer practiced. It is a landmark on the prominent Oxford/Vincent Street corner and contributes to the streetscape character of the town centre.
Federation Bungalow	5 Byron Street		B	17980	The single storey brick and iron dwelling has aesthetic value as an exemplar of a Federation Bungalow constructed c1915.
Drill Hall	177 Oxford Street	✓	A	8764	<p>Drill Hall, Leederville, a single storey hall and associated offices and rooms, constructed in brick and galvanised iron in a Federation Free Classical style, and a parade ground, has cultural heritage significance for the following reasons:</p> <ul style="list-style-type: none"> <li>the place was adapted as a Drill Hall in 1913 from a recently constructed Mechanics' Institute and demonstrates the manner in which the emerging defence training needs of the country had to be satisfied in parts of metropolitan Perth in the lead-up to World War One;</li> <li>the place is a good example of a Federation Free Classical style of public building constructed in the major period of development for Leederville and North Perth;</li> <li>the place is a rare example of an extant drill hall, converted from a recently constructed Mechanics' Institute building, from this period in metropolitan Perth; and</li> <li>the place provides a landmark at the junction of two important roads and marks the western edge of the Leederville Town Centre along Vincent Street.</li> </ul> <p>More recent structures, including those of a transportable nature, lean-to structures, fences and pavings, are considered to be of lesser significance and have not been included in detail in this assessment.</p>

PLACE NAME	PROPERTY ADDRESS	STATE REGISTERED PLACE	MANAGEMENT CATEGORY	INHERIT PLACE NUMBER	STATEMENT OF SIGNIFICANCE
Aramore Catholic College Group	30-42 Franklin Street and 338-342 Shakespeare Street	✓	A	8709	<p>The Aramore Catholic College Group, comprising the single storey brick, stucco and tile St. Mary's Church (1923 and 1937), two storey concrete block and corrugated iron roof Aranmore Catholic College Hall (formerly St Mary's Hall, 1929), two storey brick and tile St. Mary's Convent fmr (1933), two storey brick and tile St. Mary's Presbytery (1934), two storey brick and tile Mann Building (1942), two storey brick and tile St. Mary's School fmr (1952), three storey brick and asbestos roof Murphy Wing, two storey brick and tile St. Joseph's Science Block (1965), single storey brick and tile St. Mary's Parish Centre (1972), single storey brick and iron A and I Bateman Manual Arts Block (1979), two storey brick and tile J. F. Moloney Library (1982) and other minor structures in a designed landscape setting, has cultural heritage significance for the following reasons:</p> <ul style="list-style-type: none"> <li>• St. Mary's Church, St. Mary's Presbytery, and St. Mary's Convent fmr, St. Mary's School building, Mann Building, and Aranmore Catholic College Hall, in combination with their landscape setting, make up a significant group, with St. Mary's Church, St. Mary's Presbytery, and St. Mary's Convent fmr forming a particularly strong visual group; St. Mary's Church displays a high degree of artistic and technical sophistication, both internally and externally, exhibits a well-resolved combination of architectural, symbolic and artistic motifs, is a visual focus of the district, and is architecturally the finest building in the group;</li> <li>• the place provides important evidence of the development of the North Perth and Leederville district, its class and religious demographic, and the development of a Catholic parish, primary education, and more recently secondary education in the State;</li> <li>• St Mary's Church and Presbytery provide evidence of the strength and growth of the Catholic community in areas north of Perth and are substantial expression of the development of the church at a time of significant activity in the Inter-War period;</li> <li>• the place as a whole is significant evidence of the work of the Sisters of Mercy and the Christian Brothers, who established the schools in response to the needs of a growing Roman Catholic community;</li> <li>• St. Mary's Church is rare as a parish church with a very tall tower and spire, visible a significant distance from the building, that are more akin to design elements generally reserved for a cathedral; and, the place is known in the Italian Catholic community for hosting an annual Italian street parade celebrating the parish's patron saint, Saint Rocco, which has been held in Leederville since 1968 and is attended by Italians from across Perth and from churches in Italy affiliating with St Rocco.</li> </ul> <p>The St. Joseph Science Centre, Music Centre, Toilets, Canteen and Covered Area, Murphy Wing, Garage, additions to Aranmore Catholic College Hall, A and I Bateman Manual Arts Block, St. Mary's Parish Centre, J. F. Moloney Library, Presbytery Garage, St. Mary's Church Toilet Block and streetscape improvements are of little cultural heritage significance.</p> <p>Foley House is a recent acquisition and has a separate history to the remainder of the place. It has little significance in terms of the history of Aramore Catholic College Group and is not included in the curtilage of this assessment.</p>
Leederville Oval	246 Vincent Street		A	14582	<p>Leederville Oval has considerable social significance to the district, being located at the heart of the district and being the drilling ground for the Leederville Drill Hall during World War One, the long time home of the West Perth Football Club, a venue for cricket and special events. The grandstand and associated facilities is one of the better metropolitan examples of the Post War Functionalist style of sporting venue.</p>
Leederville Hotel	742 Newcastle Street		A	2201	<p>Leederville Hotel is a typical hotel in the Federation Romanesque style of the period, designed by notable hotel designers of the day. The corner tower is a landmark, terminating the vista along Newcastle Street. It has social value as it has operated continuously as licensed premises and has been a social and entertainment venue for more than a century.</p>
Leederville Primary School (fmr)	164 Oxford Street		B	3375	<p>Leederville Primary School is a representative example of an intact group of school buildings of the late 1890s period. It has latterly been converted to serve Schools of Isolated and Distance Education.</p>

PLACE NAME	PROPERTY ADDRESS	STATE REGISTERED PLACE	MANAGEMENT CATEGORY	INHERIT PLACE NUMBER	STATEMENT OF SIGNIFICANCE
Horry's Tree	Main Roads WA Road Reserve – bounded by the Mitchell Freeway Melrose Stamford and Vincent Streets		B	25710	Horry's Tree (Moreton Bay Fig tree) has moderate historic significance being planted by Horace (Horry) Thompson, a dairyman and resident within the Leederville area who fought for Australia and lost his life at the Battle of Passchendaele in the First World War. Horry was the son of Harry Thompson who served as a Leederville Councillor in the late 18th and early 19th centuries. Horry's Tree was the only domestic tree at this particular location that was not demolished within the land resumption area designated by the Main Roads Department for the construction of the Mitchell Freeway in the 1970s. Horry's Tree has moderate aesthetic significance as a mature and healthy specimen of its kind, which is of considerable height that is clearly visible from the dual use path along the Mitchell Freeway adjacent to the Vincent Street off ramp and is accessible to the public. Horry's Tree has some social significance being valued by the community through its historic and social associations with the Thompson Family and the community in Leederville more generally. The tree serves to contribute to the community's sense of place.
Central TAFE Leederville Campus	43 Richmond Street		B	18047	Central TAFE, Leederville Campus site has social significance for the delivery of education since the Interwar period. Leederville Campus has been synonymous with technical education in this state for the whole of the period since World War Two and is now one of the principal campuses of Central Metropolitan College of TAFE. It is an important institution at the heart of the district, with an ongoing role as a landmark educational activity within a state perspective.
Retail/Commercial Buildings	112-124 Oxford Street		A	2200	The commercial buildings at 711-751 Newcastle Street and 112-124 Oxford Street are representative examples of commercial development of the early 1900s, through to the Interwar period. The earlier two storey building is a straightforward, well proportioned work by prominent architect, Michael Cavanagh. The grouping of two storey developments around this intersection, designed by prominent architects demonstrates the importance of this intersection to the Leederville town centre during its major growth phases. It has some social significance as a venue for Fibber McGee's.
Glick House	18 Tennyson Street		B	18055	Glick House at 18 Tennyson Street is an award winning and striking example of Late Twentieth Century Functionalist style applied to an infill development of residence and studio for a notable local artist.
New Oxford Cinema (Luna Cinema)	159 Oxford Street		A	2206	Luna Cinema is a representative example of a suburban cinema in the Interwar Art Deco style, a prominently located landmark, whose fortunes have been integral with that of the town centre since it commenced operations in 1927. It is now an anchor of the town centre.
Olive Trees	1 The Avenue		B	18765	The Olive Trees have some historic significance being planted by the Panegyres family circa 1927, a Greek family who have made a significant contribution to the development of the Town of Vincent community. The Olive Trees have some social significance being valued by the community through its historic and social associations with the Panegyres family and the Greek community in Leederville more generally. The Olive Trees have some aesthetic value as it forms a significant element in the historic streetscape of Leederville.
Cullity Timbers Administration Building (fmr)	62 Frame Court		A	18005	Cullity Timbers (former) is a comparatively rare intact group of commercial buildings in the Postwar Contemporary/Functionalist style. It is an early work of Geoffrey Summerhayes, one of Perth's notable Postwar architects. Its association with the innovative Cullity Timbers and Westralian Plywoods, leaders in the Postwar production techniques of the timber industry. Since the cessation of its original use the place has been used for community purposes by the State Emergency Services and, latterly, a youth centre.
Weatherboard Houses	64 Richmond Street		B	18048	The house, at 64 Richmond Street is an exemplar of a rare and intact weatherboard Federation Bungalow, which clearly demonstrates the stylistic differences from the neighbouring Colonial Georgian cottage.

PLACE NAME	PROPERTY ADDRESS	STATE REGISTERED PLACE	MANAGEMENT CATEGORY	INHERIT PLACE NUMBER	STATEMENT OF SIGNIFICANCE
Oddfellows Hall (fmr)	217 Oxford Street		A	8736	<p>Oddfellows Hall (fmr), Leederville, a two storey limestone building designed in the Federation Free Classical style, with single storey later brick additions to the rear, has cultural heritage significance for the following reasons:</p> <ul style="list-style-type: none"> <li>the place was purpose-built in 1897 for the Grand United Order of Odd Fellows to provide medical services and financial assistance prior to these matters becoming government-managed social services;</li> <li>the place is a rare extant example of a mutual benefit society building in metropolitan Western Australia. Few buildings of the Odd Fellows movement remain in Western Australia; and</li> <li>the façade of the place is a fine example of Federation Free Classical Style architecture.</li> </ul> <p>The interior of Oddfellows Hall (fmr), Leederville has been considerably altered and is of little cultural heritage significance. The single storey brick additions to the rear are also of little cultural heritage significance.</p>
Loftus Centre	99 Loftus Street		B	18034	<p>Loftus Centre was constructed in a highly accessible location to be a district and a regional recreational and community facilities complex, by the City of Perth, prior to its breakup and the formation of the Town of Vincent. The Loftus Centre is located adjacent to the Town's administrative centre and the regional facilities of Leederville Oval and the Leederville campus of Central Metropolitan College of TAFE. It expands and consolidates the great social value of this streetblock which forms the heart of the Town.</p>
Weatherboard Cottage	245 Vincent Street		A	18064	<p>The weatherboard house at No 245 Vincent Street is a fine and notable example of a Late Colonial Cottage style, which has associations with the Bourne family, early residents of Leederville, who owned and occupied the place from 1915 to 1973.</p>
House and Shop (fmr)	69 Bourke Street		B	17970	<p>The house and former shop at 69 Bourke Street is an unusual and intact example of a corner weatherboard structure in a composite style of the Federation period. It was associated with members of the Davies family for more than a generation who ran it as the local general store in the Bourke Street area, a way of life that is no longer practiced.</p>
Oxford Hotel	368 Oxford Street		B	2198	<p>Oxford Hotel is a long surviving landmark on a prominent location on Oxford Street. It is the first hotel in Leederville and is representative of the manner in which suburban hotels were consistently modified and adapted by well known architects to suit the changing needs of the hotel trade. It has been a social meeting place on Oxford Street for most of the past century.</p>
Two Houses	1 & 3 Bouverie Place		B	17971	<p>The modest pair of houses, at 1 &amp; 3 Bouverie Place are fine neighbouring examples of the Federation Georgian style, having the same form and the same detailing, design and fabric of Federation bungalow dwellings. Their modesty demonstrates the role and status of early development in this area.</p>
Shopping Precinct	163-167 Oxford Street		B	8734	<p>The three attached shops at 163-167 Oxford Street are a representative example of a group in the Interwar Retail style, that demonstrate the reduction in scale and confidence of commercial development undertaken in this period. The shops are an example of the development of Oxford Street into a retail centre for Leederville.</p>
<b>MOUNT HAWTHORN</b>					
Mount Hawthorn Uniting Church	115-117 Kalgoorlie Street		B	2210	<p>The Mount Hawthorn Uniting Church is a good example of the Interwar Austerity style which demonstrates the aspirations and the limited resources of the local parish in the late 1930s. The place contributes to the streetscape and has associations with the Presbyterian Church, the Uniting Church and local community.</p>
Mount Hawthorn Primary School	1 Killarney Street		B	8745	<p>Mount Hawthorn Junior Primary School is a good example of an Infants and Primary School in the Interwar Art Deco style, which before the Second World War was a model of its type. The history of the school mirrors the development of the area and the changes in primary education over the past seven decades.</p>
House	148 Anzac Road		B	17966	<p>The house at 148 Anzac Road, is a fine and representative example of the Interwar California Bungalow style, that is substantially intact. The wide frontage demonstrates a new housing model for the Interwar period, basically two rooms deep, with more rooms having street views. The width is amplified with the front garage providing for the increasing ownership of motor vehicles.</p>
House	77 Fairfield Street		B	17999	<p>The house, at 77 Fairfield Street, is a fine and representative example of a Federation Queen Anne bungalow that has been adapted and sympathetically extended to suit contemporary accommodation standards.</p>

PLACE NAME	PROPERTY ADDRESS	STATE REGISTERED PLACE	MANAGEMENT CATEGORY	INHERIT PLACE NUMBER	STATEMENT OF SIGNIFICANCE
Shop with attached house	45 & 45A Hobart Street		B	18015	The shop with attached house, at 45 Hobart St is a fine example of an Interwar Art Deco style corner shop that has continued to operate as a corner store and provides a focal point in the local community. It was located at the heart of the Merredin Park Estate that was developed by the Land & Building Company of Sydney at a time of economic depression in the eastern states.
House	150 Coogee Street		B	17991	The house, at 150 Coogee St, was the family home of Hazel Hawke, wife of Prime Minister Bob Hawke. It is a fine and representative example of an Interwar California Bungalow.
House	50 Shakespeare Street		B	18050	The residence at 50 Shakespeare Street is a fine and intact example of a symmetrical Federation bungalow, which has a strong street presence.
Mount Hawthorn Hospital	100 Flinders Street		B	8708	Hawthorn Hospital through its continuous operation demonstrates the development of a hospital and health services in suburban Mount Hawthorn, from private hospital to public hospital and later to permanent care. Alfred Kessell house was acquired by his sisters who founded and operated the hospital until taken over by the Health Department in 1957.
Paddington Ale House (fmr Mount Hawthorn Hotel)	141 Scarborough Beach Road		A	2211	Paddington Ale House (former Mount Hawthorn Hotel) is a fine example of an Interwar Free Classical style, and a late work of Michael Cavanagh, which has been sympathetically modeled in the Late 20th Century Post Modern style to bring the facilities up to contemporary standards. It is a landmark on a prominent corner location. It has associations with the Monaghan family, prominent hoteliers, Cavanagh & Cavanagh, notable architects, and H A Doust, a respected builder of the period.
House	143 Shakespeare Street		B	18051	The house at 143 Shakespeare Street is a fine representative and intact example of Interwar Californian Bungalow, which has a strong street presence.
Mount Hawthorn Baptist Church	94-98 Hobart Street		B	2209	Mount Hawthorn Baptist Church demonstrates the stripped Federation Gothic style typical of non-conformist denominational building in the Federation and the Interwar period. The place is a local landmark and contributes to the streetscape through its corner location. It has been socially significant for the Baptist community and for the local community.
House	40 Anzac Road		B	17965	The house, at No. 40 Anzac Road, is a good and representative example of the Interwar Arts and Crafts style applied to a modest bungalow. Its fine timber entry detail is reminiscent of similar detailing by Robin Dodds in Queensland and Harold Desbrowe Anear in Melbourne.
Anzac Cottage	38 Kalgoorlie Street	✓	A	3344	Anzac Cottage, a substantially intact single storey, four-roomed brick and tile residence in the Federation Queen Anne style, has cultural heritage significance for the following reasons; <ul style="list-style-type: none"> <li>the place was the first war memorial built in Australia to commemorate the participation of Australian troops in World War I;</li> <li>the place is representative of the effect that Australia's role in World War I, and the role of the Anzacs in particular, had on the Western Australian community in the immediate aftermath of the Gallipoli campaign;</li> <li>the place is a rare example of an architect designed workers' cottage. While the internal arrangement is a conventional configuration, the combination of materials and detailing is unusual for workers' cottages from the era;</li> <li>the place is a good example of a modest residential building constructed in suburban Perth in the 1910s, which is made exceptional by virtue of the circumstances of its construction by the Mount Hawthorn community as a war memorial and as a result has come to represent the values that are associated with the Anzac tradition in Australia; and</li> <li>the technical innovation and achievement of constructing a brick and tile cottage with the trades and skills of over 200 people from the Mount Hawthorn community in a single day in 1916 is a significant accomplishment.</li> </ul>
House	58 The Boulevard		B	25711	The place is a tuck pointed brick and corrugated steel roofed house. It is typical of the modest-scale residential development in Mount Hawthorn constructed in the Inter-War period. The place has moderate aesthetic value as a good and intact example of the Inter-War Bungalow style of architecture and makes a significant contribution to the streetscape and character of the area. The place has some historic value as a representative example which reflects the pattern of suburban development in the Inter-War period when Mount Hawthorn was developed.

PLACE NAME	PROPERTY ADDRESS	STATE REGISTERED PLACE	MANAGEMENT CATEGORY	INHERIT PLACE NUMBER	STATEMENT OF SIGNIFICANCE
Factory (fmr)	139 Buxton Street		B	17979	No. 139 Buxton Street is a surviving example of immigrant initiative through a factory building constructed by immigrants, largely from materials of their own making. Now used as The Jazz cellar it has become a venue of social importance.
Menzies Park	95-117 Egina Street		B	17998	Menzies Park was created in the 1940s to make up for a deficit in public open space in the area of Mount Hawthorn, south of Scarborough Beach Road, in recognition of planning standards promoted by the City Beautiful movement under the leadership of W E Bold, the long standing Town Clerk of the City of Perth.
<b>MOUNT LAWLEY</b>					
House	105 Walcott Street		B	18068	The house at No 105 Walcott Street is a good and comparatively intact example of the Interwar Mediterranean style, which is comparatively rare within the district.
Corner Shops with attached houses	50 & 52 Grosvenor Road		B	18008	A pair of former shops with houses attached on the corner of Grosvenor Road and Hutt Street, marking the end of a newly developing community associated with the growth of tramways in the first decade of the 20th century.
Mount Lawley Railway Bridge (Subway)	Guildford Road		B	18011	Mount Lawley Railway Bridge (Subway) is an integral element of the Perth-Midland railway line, which spans the main road from Perth-Guildford. Its strong engineering form across the Guildford Road subway has been an iconic presence for the better part of a century.
Freemason's Lodge Hall (Northern Suburbs)	50 Alma Road		A	8583	Northern Suburbs Masonic Hall is a fine and representative example of the Interwar Beaux Arts style by Herbert Parry, a leading architect of the day. It is a local landmark and demonstrates the social importance of the Freemasonry movement during the Interwar period. It has historical associations with the Freemasons since 1928, interrupted only by the use of the hall by the RAAF during World War Two.
Alexander Buildings	71-77 Walcott Street		A	8588	Alexander Buildings is a substantial example of a 1938 Interwar Art Deco refurbishment and renaming of the Federation period, Broadway Building. It is a landmark at the important intersection of Walcott and Beaufort Streets. Simon Alexander was responsible for the design and construction of the Broadway Building and his son was responsible for its adaptation into the Alexander Buildings. The history, form, style and landmark qualities of the Alexander Buildings complement the Lyceum Buildings opposite, now the Astor Cinema, also designed, developed and adapted by Simon and John Alexander. These landmark buildings have long been considered the heart of the Mt Lawley town centre.
Former Hall	2 Raglan Road		B	8740	The former community hall at No. 2 Raglan Road is a good example of a community hall constructed in the Interwar period, with the modest means available at that time.
Former Church	65-67 Raglan Road		B	2214	The former church St Margaret's Uniting Church has landmark value on its corner location and as a good example of the Federation Free Gothic style of architecture. The church has close associations with the Congregational and Uniting Churches and Wasley family. It has recently been adapted for residential purposes whilst still maintaining its cultural heritage significance.
House	198 Harold Street		B	8750	The house is a rare and fine example of a weatherboard dwelling in the Federation Queen Anne style, which has retained a high level of integrity, particularly in the timber details associated with the roof and eaves. It is sited prominently opposite Alacoque Square and the Sacred Heart complex.
Catholic Women's League building	49 Vincent Street		B	8751	The land in which the Catholic Women's League building now stands was part of the original 1891/3 residential subdivision of Highgate Hill by Matthew Gibney, Catholic Bishop of Perth. The building was originally called 'La Mascotte' and was owned and occupied by tobacconist Alfred Benjamin Mayer. Since 1972 the building has been home to the Catholic Women's League and re named 'Downey House' after Mrs Carmel Downey, former State and National President of the Catholic Womens League. The building is an unusual example of the Federation Bungalow style because of the width of its principal frontage and its irregular lot configuration.
Former Bishop Gibney's House (Lourdes)	50 Vincent Street		A	13033	Bishop Gibney's House (Lourdes) at No. 50 Vincent Street is a fine example of the Federation Arts & Crafts style and a sophisticated example of balanced asymmetrical design. Lourdes has close associations with its original owner Bishop Gibney and the development of the area, particularly the Sisters of Our Lady of the Missions and the Redemptorist Monastery. More latterly it has associations with the Highgate Hill parish and the Franciscan Friars.
House	74 Vincent Street		B	8753	The house at 74 Vincent Street is a good example of an earlier Federation Bungalow style, which retains many of the characteristics of the Late Colonial model on which it was based.

PLACE NAME	PROPERTY ADDRESS	STATE REGISTERED PLACE	MANAGEMENT CATEGORY	INHERIT PLACE NUMBER	STATEMENT OF SIGNIFICANCE
House	82 Vincent Street		B	8754	The house at 82 Vincent Street, is a representative example of a Federation Arts and Crafts cottage showing the influence of the Arts and Crafts movement across the time of the First World War.
House	92 Vincent Street		B	8755	Parkside is an exemplar of the Interwar Mediterranean style of flats, which is one of the most sophisticated designs of its style and period, with a formality and exactness of detail that is noteworthy. The place contributes to the streetscape and demonstrates the attractiveness of apartment life in the latter Interwar period.
Parkside	104 Vincent Street		A	8756	Parkside is an exemplar of the Interwar Mediterranean style of flats, which is one of the most sophisticated designs of its style and period, with a formality and exactness of detail that is noteworthy. The place contributes to the streetscape and demonstrates the attractiveness of apartment life in the latter Interwar period.
Church Restaurant, former Methodist Church	41 Walcott Street		B	2427	Church Restaurant, former Methodist Church, is a fine and notable example of Interwar Gothic architecture that is a landmark on Walcott Street. It was a grand and confident gesture in the future at the time of its construction during the Depression. It has associations with the Methodist Church and demonstrates an appropriate adaptation to a new use after the discontinuance of its church function.
House 'Monomeith'	544 William Street		A	8772	Monomeith is a notable, fine and singular example of the Federation Queen Anne style, which retains a high level of integrity. It has close associations with H Milner, real estate and financial agent, and was part of a group of handsome residences, for notable business people at the time of their development.
House	10 Grosvenor Road		B	8714	Apartment of the 'houses, 10 & 12 Grosvenor Rd Group' (INHERIT ID 18082) The houses at Nos. 10 & 12 Grosvenor Road are the surviving pair of a group of 3 identical houses. They are rare and good examples of identical Federation Bungalows.
House	12 Grosvenor Road		B	8715	Apartment of the 'houses, 10 & 12 Grosvenor Rd Group' (INHERIT ID 18082) The houses at Nos. 10 & 12 Grosvenor Road are the surviving pair of a group of 3 identical houses. They are rare and good examples of identical Federation Bungalows.
House	73 Grosvenor Road		B	18009	The modest weatherboard house at 73 Grosvenor Road is a fine example of the Late Colonial Georgian style constructed at about the time of the First World War, which retains a high level of integrity.
House	40 Guildford Road		B	3818	The house at 40 Guildford Road is a substantial and good example of the Federation Arts and Crafts style, which demonstrates the aspirations of the original developers for this neighbourhood before the growth of traffic on Guildford Road impacted so heavily on amenity.
House	35 Wasley Street		B	11449	The house at No 35 is a good and intact example of a Federation Georgian bungalow, closely derived from Late Colonial precedents
Four Houses	51, 53, 55 & 61 Walcott Street		B	18067	This lively and coherent group of houses, at 51, 53, 55 and 61 Walcott Street are variations on the Federation and Interwar Bungalow style, with 61 being an exemplar of the Interwar Bungalow style and the others being representative of the variety of the Federation Bungalow style.
Stedon Apartments	540-542 William Street		B	18072	Stedon Apartments are a good example of the Interwar Functionalist style, with Moderne influences in the curved corners. The deep section of the apartments contrast with the narrow section of the Moderne style flats opposite at No. 543 William Street, illustrating different forms of flat lifestyle; to be found in the clustering of flats built during this period at the northern end of William Street.
Roschanmaure Flats	545 William Street		B	18073	Roschanmaure Flats are a good example of Interwar Contemporary style applied to this building type. Walk up flats were a popular concept during the Interwar period, particularly following the Depression. Several flat developments were clustered in this section of William Street on a tram route to central Perth. The Interwar flat building phase has been paralleled in the past decade with inner city apartment and town house living following the 1989 real estate market collapse.
Millenda Court, Maurann, Lawley Gate Flats	592-600 William Street		A	18076	Millenda Court, Maurann, and Lawley Gate form a group of Interwar flat developments in the Moderne and Functionalist styles, located on a major tramroute to central Perth. Millenda Court is a particularly good example of the Moderne style with its corner response of stepped and rounded verandahs and tiered hipped roof. The group of flats demonstrates the popularity of this concept in the Interwar period and the increasing variety of inner city housing types. This group, with others, markedly changed the character of the northern end of William Street during this period.



PLACE NAME	PROPERTY ADDRESS	STATE REGISTERED PLACE	MANAGEMENT CATEGORY	INHERIT PLACE NUMBER	STATEMENT OF SIGNIFICANCE
Clarke's Building	639-643 Beaufort Street		B	18084	Clarke's Building is a fine example of Interwar Art Deco style architecture that addresses the corner and both street frontages in a dominant commercial section of Beaufort Street. The place makes a notable contribution to the character of the area.
Wisteria Cottage	12 Monmouth Street		B	18040	Wisteria Cottage, at 12 Monmouth Street, is a fine and representative example of the Federation Georgian style, still in use well into the Gold Boom era.
House	547 William Street		B	18074	The house at No. 547 William Street is a representative example of the Federation Bungalow style, which repeats No 552's possible Interwar modification of verandah. This place is part of a cluster of good examples of Federation Bungalows in this section of William Street.
House	552 William Street		B	18075	The house at No. 552 William Street was constructed for Albany Bell, who was later famous for the Albany Bell Castle, the confectionery and cake factory at No. 86 Guildford Road. The subject place is a fine and sober example of the Federation Italianate style, befitting a prominent business man of his day. The place also has some historical association with Charles William Ferguson, who had developed the Houghton vineyard that pioneered the viticulture industry in Western Australia.
Walcott Centre	399 Lord Street		A	15731	<p>Walcott Centre, a complex of domestic scaled buildings constructed of traditional materials including brick, rendered brick, timber frame with sections of weatherboard, rough cast, rendered-finish flat panels, terracotta roof tiles and corrugated iron, comprising the Main Building (1921), former Nurses' Quarters (1921), former Detention Centre (1921) and security fence (1950) and various ancillary buildings including the Wood and Metal Workshops, Woodshed, former Boys' Flat, former Workshed and Laundry (1957) has cultural heritage significance for the following reasons:</p> <ul style="list-style-type: none"> <li>the place is the oldest government run institution providing child welfare services in the State and was the only government receiving home from 1921 until 1984, and the only fully government funded child welfare institution until 1960. It has played a significant role in the development and implementation of Child Welfare practices by the State government, particularly in the areas of adoption, foster care and institutional care, and in the treatment of neglected, orphaned and delinquent youths from the 1920s to the 1980s;</li> <li>the main buildings, exhibiting characteristics of the Federation Bungalow architectural style, and adjacent landscaped areas addressing Walcott Street, provide a pleasing group of buildings and garden areas typical of a government institution of the inter-war period enhanced by its domestic quality appropriate to the use of the place for the accommodation of children; the place has strong associations for those people who, as children, for family or other reasons spent time living in the institution, and for the matrons, nurses and general staff who worked and lived there;</li> <li>the place played a role in the welfare of State wards of both Aboriginal and non-Aboriginal origin from the 1920s to the 1980s and is significant to all sectors of the wider community for its role in child welfare services in Western Australia; and</li> <li>the security fence is the only known example of a curved corrugated galvanized iron fence of its type, and as such is a rare structure.</li> </ul> <p>The TAFE demountable classroom, corrugated asbestos cement fences, recent landscaping adjacent to the former Detention Centre and the car park adjacent to Lord Street are of little significance.</p>
Federation Bungalows	29 & 30 Hutt Street		B	18017	The dwellings are good and intact examples of their style constructed in the Gold Boom period in Perth.
Federation Bungalow	100 Vincent Street		B	18058	The subject dwelling at No. 100 Vincent Street, Mount Lawley has some aesthetic value as an individual building displaying elements of the Federation Bungalow style of architecture with Inter-war modifications. The dwelling has considerable aesthetic value in terms of its relation to the surrounding dwellings and the overall contribution to the style and character of places along this portion of Vincent Street. The aesthetic cohesiveness of the original dwellings is considered to be sympathetic and complementary to the vista of Hyde Park. The place has some historic value as it forms part of the evolution and pattern of the history of the Town of Vincent, with particular reference to the early part of the twentieth century following the Gold Rush period and the expansion of Perth and its outlying suburbs.

PLACE NAME	PROPERTY ADDRESS	STATE REGISTERED PLACE	MANAGEMENT CATEGORY	INHERIT PLACE NUMBER	STATEMENT OF SIGNIFICANCE
Former Substation	21-22 Vincent Street		A		The former substation has considerable historic value as a physical record of Perth's tram and trolley bus transportation system that operated in Perth from 1899 to 1969 and contributed significantly to the development of the suburbs within the Town of Vincent. The former substation has some aesthetic value as a good example of a municipal building constructed in the Inter-War Functionalist style. The former substation has considerable rarity value as one of few remaining physical structures associated with the tram and trolley bus transportation system located within the Town of Vincent.
Federation Bungalow	102A & 102B Vincent Street		B	18059	The subject dwelling at Nos. 102A and 102B Vincent Street, Mount Lawley has some aesthetic value as an individual building displaying elements of the Federation Bungalow style of architecture. The dwelling has considerable aesthetic value in terms of its relation to the surrounding dwellings and the overall contribution to the style and character of places along this portion of Vincent Street. The aesthetic cohesiveness of the original dwellings is considered to be sympathetic and complementary to the vista of Hyde Park. The place has some historic value as it forms part of the evolution and pattern of the history of the Town of Vincent, with particular reference to the early part of the twentieth century following the Gold Rush period and the expansion of Perth and its outlying suburbs.
Former shop and attached house	1 Monmouth Street		B	18039	The place has some aesthetic value as a good example of a corner shop and attached house constructed in the Federation Free Classical style of architecture with its distinct parapet with precast ball motifs. The strong presence of the place on the corner of Forrest and Monmouth Streets has some aesthetic value through the contribution to the quality of its setting. The place has some historic value through illustrating the popular rise of local shops and attached housing in the newly established suburbs north of Perth in the early part of the 20th century and the later conversion to residential use in the post WW2 period. The place has some rarity value as a former shop and attached house anchored on the corner of Forrest and Monmouth Streets constructed c1912 in the Federation Free Classical style of architecture with its distinct parapet with precast ball motifs
House	15 Wasley Street		B	25863	Constructed circa 1916, the place is a modest tuck pointed brick dwelling with a corrugated metal roof, representative of the Federation style of the early twentieth century. The place has moderate aesthetic value as a good and relatively intact example of the Federation Bungalow style of architecture and makes a significant contribution to the streetscape and character of the area. The place has moderate historic value as a representative example which reflects the pattern of suburban development in the early twentieth century when Mount Lawley was developed.
Salvation Army Citadel (fmr)	69 Barlee St Mount Lawley		A	17956	The Salvation Army Citadel (former) is notable as a fine and comparatively rare example of the Federation Chicagoesque style, its long term associations with the Salvation Army and associations with the Hasluck family. Its later use by the Cracovia Club demonstrates the changing demographic of the area, particularly in the Postwar period.
<b>NORTH PERTH</b>					
House	134 Vincent Street		B	8758	The house at 134 Vincent Street is a good example of a symmetrical Federation Bungalow style, with reasonable integrity.
House	3 Glebe Street		B	18006	The house, at 3 Glebe Street, is a fine and representative example of a Federation Queen Anne bungalow, which retains a high level of integrity. Glebe Street recalls the former glebe of St Hilda's Anglican Church.
Rowardennan	130 Chelmsford Road		B	17988	The dwelling at No. 130 Chelmsford Road is a grand and detailed example of the Federation Queen Anne style of architecture, which makes an important contribution to the Chelmsford Road streetscape and environs.
St Hilda's Church (Anglican)	13 Glebe Street		B	2217	St Hilda's Church at 13 Glebe Street is an exemplar of the comparatively rare Interwar Romanesque style. It houses the oldest font in Australia, of Anglo Saxon origin, it was moved to St Hilda's when St Johns Anglican Church in Milligan Street was demolished in 1928. The Church has associations with Archbishop Riley and his son Tom, and William Loton.

PLACE NAME	PROPERTY ADDRESS	STATE REGISTERED PLACE	MANAGEMENT CATEGORY	INHERIT PLACE NUMBER	STATEMENT OF SIGNIFICANCE
North Perth Town Hall - Main Hall	24-26 View Street	✓	A	18080	<p>Parent Place - North Perth Town Hall Complex (02216) North Perth Town Hall Complex, a Federation Free Classical style red brick masonry construction with stuccoed ornamentation comprising the original 1902 Lesser Hall building and the more substantial Main Hall, built in 1910, has cultural heritage significance for the following reasons:</p> <ul style="list-style-type: none"> <li>the place is a representative example of municipal halls designed in the Federation Free Classical style for the inner suburbs that emerged around the city of Perth in the early 1900s;</li> <li>planned as the eastern wing of a greater complex, the grandeur of the Lesser Hall illustrates the wealth and confidence that accompanied the gold boom period;</li> <li>built of red brick masonry construction with stuccoed ornamentation, the place forms a visually important and cohesive complex; the place forms a part of streetscape of similarly styled buildings on Leake Street;</li> <li>the place is a significant feature in the development of the suburb, marking a time when its population and income were sufficient to support the creation of a municipality; the place is highly valued by the local community for its use as a venue for major civic, social and cultural activities dating from 1914;</li> <li>North Perth Lesser Hall is a fine example of the architectural work of Henry James Prockter; and</li> <li>the place has been a landmark in the suburb since 1902 and as such had contributed to the community's sense of place.</li> </ul> <p>Recent work to the place including the kitchen added to the main hall, toilets behind the Lesser Hall, the infill fabric of the covered link between the two buildings, and the interiors of the backstage and Lesser Hall kitchen areas, are of low significance</p>
St Margaret's Uniting Church (fmr)	131 Raglan Road		A	16752	<p>Bethany is the former Uniting Church, at 129-131 Raglan Road. It is one of the finest examples of the Federation Romanesque style, to the design of well known architect John Hine. The place has earlier associations with the Presbyterian Church, the Uniting Church and, more recently, the Indonesian Parish of the Uniting Church illustrating the changing demographics of the Christian Church in the late 20th century and the multiculturalism of the area.</p>
Charles Veryard Reserve	53-55 Albert Street		B	17957	<p>The Smith's Lake area has considerable historical significance as it represents a lake, the margins of which were used for farming, market gardening and dairying, before being filled and redeveloped as a park. The Charles Veryard Reserve has considerable social significance for its public accessibility for open space purposes and its long term associations with the North Perth Cricket Club and Old Modernians Hockey Club. The adapted Change rooms and Social Rooms are of much lesser significance.</p>
Three houses	105-109 Alma Road		B	17960	<p>The properties at Nos. 105, 107, 109 Alma Road are a cohesive and intact example of three Federation bungalow dwellings on neighbouring sites. The group represents part of the new subdivision of the North Perth Estate close to the city in the early 1900s. The group makes a significant contribution to the character of the area.</p>
Public Open Space (Smith's Lake drainage reserve)	31 Kayle Street		A	11441	<p>The public open space is a former wetland, previously used for market gardening, farming and as a rubbish tip, which was rehabilitated for active and passive recreational purposes, with integrated open drainage water courses, in both Postwar Arcadian and Functional styles.</p>
Flats	10 Alma Road		B	17959	<p>The double storey block of flats at No. 10 Alma Road is a fine example of the Interwar Contemporary style of 'bachelor' living that was becoming popular as a new form of urban living during the Interwar period, as it emerged from the Depression. The flats demonstrate the increasing variety of types of near city centre residences at the start of World War Two. It is the only intact example in the town featuring an imposing central set of steps. The place marks the increasing complexity in the character of this formerly single residential street.</p>
House	92 Angove Street		B	17964	<p>The single storey brick dwelling at No. 92 Angove Street is a good example of the Federation Queen Anne Bungalow style, illustrating the type of residential development during the Federation period in this section of Angove Street.</p>
Semi-detached pair	321-323 Fitzgerald Street		B	18001	<p>The semi-detached pair, at 321-323 Fitzgerald Street, is a fine and exuberant example of an intact Federation Bungalow style with Arts and Crafts influences. It provides a lively presentation to the street.</p>

PLACE NAME	PROPERTY ADDRESS	STATE REGISTERED PLACE	MANAGEMENT CATEGORY	INHERIT PLACE NUMBER	STATEMENT OF SIGNIFICANCE
Raglan Court Flats	60 Raglan Road		B	18043	Raglan Court Flats demonstrates the variety of styles in the presentation of flat life in the late Interwar period. It is a fine and uncommon example of the Interwar Mediterranean style. Its dramatic presentation to the street makes a notable streetscape element. The place has some social significance because of its associations with Ali Mahomet and E Peet.
Dwelling	21 Brewer Street		B	11433	The dwelling at No. 21 Brewer Street is a good example of the Federation Bungalow style that has retained a high level of integrity, including fence details, and demonstrates the quality and the sobriety of the contemporary workers housing in the period immediately prior to World War One.
North Perth Fire Station (fmr)	21 View Street	✓	A	8749	<p>North Perth Fire Station (fmr), a two storey brick fire station, in the Inter-War Free Classical style, with a Marseilles pattern tiled roof, has cultural heritage significance for the following reasons:</p> <ul style="list-style-type: none"> <li>the place is rare as one of a small number of extant two storey fire stations built in Western Australia, and is one of only five extant fire stations built in the metropolitan area in the Inter-War period;</li> <li>the place is part of a civic precinct that includes the two buildings that make up the North Perth Town Hall to the north-west, the former North Perth Post Office to the immediate west, and St. Hilda's Anglican Church, a precinct that has high aesthetic value as a late nineteenth and early twentieth century streetscape;</li> <li>the place is a fine, restrained example a two storey brick and tile fire station, in the Inter-War Free Classical style; the place was designed by Architect K. C. Duncan, designer of the majority of fire stations built in Western Australia, 1930-60, who was an office bearer and life member of the Volunteer Fire Brigades Association and one of the first fire stations designed by him; and,</li> <li>the place is a late example of the once common practice of siting a fire station building in a precinct of public buildings.</li> </ul> <p>The suspended deck at first floor level, kitchen, bathroom, and dressing room fit-out and finishes are of little significance. Mini orb cladding to the east elevation, the western window to the front elevation, appliance room door, breezeblock screens, aluminium windows, and rear steel construction fire escape stair are of little significance. All fences are of little significance.</p>
View Street Houses	25 27 29 & 33 View Street		B	18056	The dwellings at Nos. 25, 27, 29 and 33 View Street are a cohesive and fine examples of Federation Bungalows located in what was once the civic hub of the North Perth urban village.
House	34 View Street		B	18057	The dwelling at No. 34 View Street is a striking example of a Federation Arts and Crafts Bungalow located in an area that was once the civic heart of North Perth.
House	20 Richmond Street		A	18046	No. 20 Richmond Street is a good example of an Inter-War Californian Bungalow constructed in c1915. The dwelling has a long associated with the Spencer family. Mr Alfred Spencer was a prominent figure in Perth's public scene during the 1940's- 1960's being a member of the Perth City Council and a influential figure behind bringing the Commonwealth (Empire Games) to Western Australia in 1962.
Westpac Bank Building (fmr)	452 Fitzgerald Street		B	8707	Westpac Bank (former) is a fine example of the Interwar Stripped Classical style which gives the bank an imposing presence in the townscape and possibly the only such example in the Town of Vincent. Historically, it is significant for associations with the Bank of New South Wales and the growth of the North Perth district and commercial centre.
Inter-war Bungalow	156 Raglan Road		B	18044	The place is considered to have some aesthetic value as an exemplar of the Inter-war Queen Anne bungalow style. The place is considered to have some aesthetic value through contributing to the quality of its setting on its corner location addressing both Raglan Road and the parkland abutting Leake Street. The place is considered to have some rarity value within the Town of Vincent as an exemplar of an Inter-war Queen Anne Bungalow with a street and parkland frontage. The place has some representative value as an Inter-war Queen Anne Bungalow sharing the asymmetrical form, detail and bargeboard gables characteristic of the Federation Queen Anne style of architecture with the less pretentious Inter-war elements such as the rendered wall surfaces, dominant gables within the roof form, verandahs supported by dominant piers and rendered chimneys.

PLACE NAME	PROPERTY ADDRESS	STATE REGISTERED PLACE	MANAGEMENT CATEGORY	INHERIT PLACE NUMBER	STATEMENT OF SIGNIFICANCE
St Margaret's Uniting Church (fmr)	65-67 Raglan Road		B	2214	The former church St Margaret's Uniting Church has landmark value on its corner location and as a good example of the Federation Free Gothic style of architecture. The church has close associations with the Congregational and Uniting Churches and Wasley family. It has recently been adapted for residential purposes whilst still maintaining its cultural heritage significance.
Casson House	2 Woodville Street		B	17955	Casson House is a fine example of an institutional building of the period in the Federation Arts and Craft style. It demonstrates the purpose designed buildings then developed for institutional purposes. The place increases the stylistic variety while maintaining the predominant material palette of the area.
House	140 Vincent Street		B	8760	The house at 140 Vincent Street is a good example of the symmetrical Federation Bungalow style, which has retained considerable integrity.
John Robert's House	116 Angove Street		B	8584	John Robert's House is a fine and uncommon example of a Donnybrook stone dwelling and an exemplar of the Italianate style. It has associations with John Roberts who was the owner builder and a stonemason of some reknown. It also informs of settlement in the area from the early 1900s and is a notable place in this section of Angove Street.
Nuytsia	109 Chelmsford Road		B	17987	Nuytsia is a fine example of a grand single storey Federation Queen Anne residence, given prominence by its corner setting. The place has associations with William Orestes Silverlock, William John Clarke and Socrates Palmer, and the site was part of the land holding of the Catholic Church, part of which was used for the development of the Redemptorist Monastery.
St Nikola Macedonian Orthodox Church & Macedonian Welfare Centre	8 Macedonia Place		B	18035	St Nikola Macedonian Orthodox Church & Macedonian Welfare Centre is significant in demonstrating the multicultural community in the Town, which is a place of worship for the Macedonian community in a facility that is a contemporary expression of its traditional form.
Beatty Park Leisure Centre & Beatty Park	220 Vincent Street	✓	A	3553	<p>Beatty Park Leisure Centre &amp; Beatty Park, a swimming pool complex constructed in brick and concrete with a fibrous cement roof structure in the Late Twentieth Century International style and aquatic leisure centre complex constructed in steel and blockwork, with metal roofs in the Late Twentieth Century Structuralist style, in a park like recreation ground setting, has cultural heritage significance for the following reasons:</p> <ul style="list-style-type: none"> <li>the City of Perth Aquatic Centre portion of the place was built as the aquatic centre for the VIIIth British Empire and Commonwealth Games, and was the first purpose built aquatic centre in Western Australia designed and built for international competition and one of three major projects undertaken by the City of Perth for the Games, the first such international competition held in Perth;</li> <li>the City of Perth Aquatic Centre component of the Beatty Park Leisure Centre is a good example of the Late Twentieth Century International style applied to a major sporting facility;</li> <li>the place was designed by W. A. Mcl. Green, the influential Town Clerk for City of Perth from 1945 to 1966, Milton Boyce, City of Perth Architect, and Lionel H. Steenbohm, Director of Parks and Gardens, who were responsible for the design of a number of the British Empire and Commonwealth Games facilities that played an important role in the success of the games;</li> <li>Beatty Park was important as one of a number of reserves, parks and gardens developed by the City of Perth between 1896 and 1936; and,</li> <li>the place is highly valued by the community as one of the older recreational reserves in the metropolitan area, as a significant reminder of the VIIIth British Empire and Commonwealth Games, as a swimming centre for the public and schools, and as a well recognised landmark in the Town of Vincent.</li> </ul> <p>The 1994 adaptations of the original City of Perth Aquatic Centre, the later additions to the north of the original complex completed in 1994, together with the associated car park, and the Alfred Spencer Pavilion are of little cultural heritage significance.</p>

PLACE NAME	PROPERTY ADDRESS	STATE REGISTERED PLACE	MANAGEMENT CATEGORY	INHERIT PLACE NUMBER	STATEMENT OF SIGNIFICANCE
Redemptorist Monastery and Church	190 Vincent Street	✓	A	2218	<p>Redemptorist Monastery and Church, comprising a three storey Cottesloe limestone construction monastery and church complex completed in stages, with a tiled roof designed in the Federation Gothic style, together with a Retreat House constructed in clinker bricks, off form concrete with a clay tiled roof in Late Twentieth Century Perth Regional style, located in a park-like setting, has cultural heritage significance for the following reasons:</p> <ul style="list-style-type: none"> <li>the place is one of a small number of monasteries remaining in operation in Western Australia;</li> <li>the place is a landmark as a large and imposing structure in an open setting, which, together with its mature trees, may be seen from a number of vantage points in the area and Perth; the place is a well-used Church, highly valued by Western Australia's Catholic community for its religious and spiritual associations, and for the site's long association with the Redemptorist Order;</li> <li>the place is an excellent example of the work of architects Michael and James Cavanagh;</li> <li>the place is an excellent and intact example of a Federation Gothic style complex, located in a park-like setting, with elegant interiors, well detailed features, and is very well constructed; the place contributes to the community's sense of place as a well-known religious complex;</li> <li>the Retreat House built in clinker brick and off form concrete, is a good example of the Late Twentieth Century Perth Regional style.</li> </ul> <p>The B.F. Prindiville Village Knights of the Southern Cross Independent Living development is located on a separate piece of land that was once part of the site. The land was formerly part of the Redemptorist Monastery grounds but was excised for the development and has no connection with the Redemptorist Monastery. It does not form part of this assessment</p>
House	4 Camelia Street		B	17981	<p>The house at 4 Camelia Street was part of the Monastery Grounds Estate. It is a fine representative example of the Federation Queen Anne style and presents a domestic complement to the grand Federation Gothic style of the Redemptorist Monastery opposite.</p>
North Perth Post Office (fmr)	39 Angove Street		B	17963	<p>The former post office at No. 39 Angove Street has significant social and historic value as the first purpose built post office in North Perth and serving the needs of the growing North Perth community prior to World War One.</p>
Rosemount Hotel	459 Fitzgerald Street		B	14915	<p>The place has some historical value as a hotel, which was constructed at the time of the Gold Boom, a significant cultural and development phase in the history of Western Australia. The place has some historical value as a hotel, which was strategically located at the junction of two important movement and public transport routes at the intersection of Fitzgerald and Angove Streets at the beginning of the twentieth century when North Perth became increasingly important in terms of its amenities and as a place where people would pass through in order to access adjoining northern streets and suburbs. The strong presence of the place contributes to its surrounding as an anchoring point for the intersection of Fitzgerald and Angove Streets. The place has some social value as a continuously licensed and operating hotel from at least 1902, providing a social venue and meeting place for the local community. With its public bar and dining facilities at ground floor level and bedroom accommodation on the upper floor, the place is representative of the type of hotels built around the turn of the century reflecting the prosperity flowing from the Gold Rushes.</p>

PLACE NAME	PROPERTY ADDRESS	STATE REGISTERED PLACE	MANAGEMENT CATEGORY	INHERIT PLACE NUMBER	STATEMENT OF SIGNIFICANCE
North Perth Primary School	3 Albert Street	✓	A	16789	<p>Apart of the North Perth Town Hall Complex (02216) North Perth Town Hall Complex, a Federation Free Classical style red brick masonry construction with stuccoed ornamentation comprising the original 1902 Lesser Hall building and the more substantial Main Hall, built in 1910 , has cultural heritage significance for the following reasons:</p> <ul style="list-style-type: none"> <li>the place is a representative example of municipal halls designed in the Federation Free Classical style for the inner suburbs that emerged around the city of Perth in the early 1900s;</li> <li>planned as the eastern wing of a greater complex, the grandeur of the Lesser Hall illustrates the wealth and confidence that accompanied the gold boom period;</li> <li>built of red brick masonry construction with stuccoed ornamentation, the place forms a visually important and cohesive complex; the place forms a part of streetscape of similarly styled buildings on Leake Street;</li> <li>the place is a significant feature in the development of the suburb, marking a time when its population and income were sufficient to support the creation of a municipality; the place is highly valued by the local community for its use as a venue for major civic, social and cultural activities dating from 1914;</li> <li>North Perth Lesser Hall is a fine example of the architectural work of Henry James Prockter; and</li> <li>the place has been a landmark in the suburb since 1902 and as such had contributed to the community's sense of place.</li> </ul> <p>Recent work to the place including the kitchen added to the main hall, toilets behind the Lesser Hall, the infill fabric of the covered link between the two buildings, and the interiors of the backstage and Lesser Hall kitchen areas, are of low significance</p>
House	24 Daphne Street		B	17997	<p>The place is recognised as having significance through its association with Phillip Collier who was MLA for Boulder and Premier of Western Australia during the Inter-War period. The place has some historic value as it demonstrates the growth of suburban areas in Perth that occurred as a direct result of the Gold Boom and the associated increase in the population. As a weatherboard dwelling the place has some rarity value as it represents a building material that is no longer widely used in the construction of residential buildings in Perth.</p>
House	116 Vincent Street		B	18060	<p>The house at 116 Vincent Street is a fine example of the Federation Bungalow style built during or immediately after the First World War. It demonstrates that residential development this early in the Interwar period was still using the Federation period models.</p>
Holbeach House	188 Grosvenor Road		B	18010	<p>No. 188 Grosvenor has heritage value as an exemplar of the Federation Queen Anne Bungalow style and its long association with Mr Wilford Mitchell, prominent auctioneer and property valuer.</p>

PLACE NAME	PROPERTY ADDRESS	STATE REGISTERED PLACE	MANAGEMENT CATEGORY	INHERIT PLACE NUMBER	STATEMENT OF SIGNIFICANCE
North Perth Town Hall - Lesser Hall	20-26 View Street	✓	A	18079	<p>Apart of the North Perth Town Hall Complex (02216) North Perth Town Hall Complex, a Federation Free Classical style red brick masonry construction with stuccoed ornamentation comprising the original 1902 Lesser Hall building and the more substantial Main Hall, built in 1910, has cultural heritage significance for the following reasons:</p> <ul style="list-style-type: none"> <li>the place is a representative example of municipal halls designed in the Federation Free Classical style for the inner suburbs that emerged around the city of Perth in the early 1900s;</li> <li>planned as the eastern wing of a greater complex, the grandeur of the Lesser Hall illustrates the wealth and confidence that accompanied the gold boom period;</li> <li>built of red brick masonry construction with stuccoed ornamentation, the place forms a visually important and cohesive complex; the place forms a part of streetscape of similarly styled buildings on Leake Street;</li> <li>the place is a significant feature in the development of the suburb, marking a time when its population and income were sufficient to support the creation of a municipality; the place is highly valued by the local community for its use as a venue for major civic, social and cultural activities dating from 1914;</li> <li>North Perth Lesser Hall is a fine example of the architectural work of Henry James Prockter; and</li> <li>the place has been a landmark in the suburb since 1902 and as such had contributed to the community's sense of place.</li> </ul> <p>Recent work to the place including the kitchen added to the main hall, toilets behind the Lesser Hall, the infill fabric of the covered link between the two buildings, and the interiors of the backstage and Lesser Hall kitchen areas, are of low significance</p>
Gloucester Court Flats	148 Vincent Street		B	18061	<p>Gloucester Court Flats are a rare example of Interwar 'flats' development that included prominent provision for a motor vehicle and suggests of a more sophisticated lifestyle than many of the flat developments in William Street. It is a rare and eclectic combination of Interwar Functionalist and Contemporary styles.</p>
House	426 Charles Street		B	17985	<p>The house, at No. 426 Charles Street, is an Interwar bungalow which has been transformed into an exemplar of Immigrant Nostalgic by the lively and vigorous reworking of the facade.</p>
House	10 Richmond Street		B	25712	<p>The place has moderate aesthetic value as a good and intact example of a residence in the Inter-War Mediterranean style. The place has some historic value as one of the Inter-War Mediterranean style houses built during the World War II.</p>
Dwelling Caretaker's House Robertson Park	176 Fitzgerald Street	✓	A	11436	<p>Parent Places - Robertson Park and Archaeological Sites (IHERIT 08705) Robertson Park and Archaeological Sites, a public park laid out in part in the Inter-War City Beautiful style, tennis club, Halvorsen Hall, Lee Hop's Cottage, and series of archaeological sites containing material from pre-settlement to the present, has cultural heritage significance for the following reasons:</p> <ul style="list-style-type: none"> <li>the place is recognized as a site containing potential archaeological evidence relating to a complex and diverse range of activities including Indigenous occupation prior to European settlement, construction of a convict-built drain in the 1870s, and British and later Chinese farming and market gardening from the 1870s to the 1920s; the place has importance for the density and diversity of its cultural features, illustrating the human occupation and evolution of the area from its use by Nyungar people prior to 1829 European settlement through to the present;</li> <li>the place is valued by the Perth community as a recreation area and community asset, including the tennis courts and the AIDS Memorial, the first such memorial in Perth, the place is a good example of a visually attractive urban park laid out mainly in the Inter-War City Beautiful style, with fine mature and adolescent trees scattered over most of the park's area; and,</li> <li>the mature Norfolk Island Pines and, to a lesser extent, the Port Jackson Fig Trees and Moreton Bay Fig Trees at the place are notable in the urban context and are a local landmark.</li> </ul> <p>The fabric of the tennis club (1982) and the current materials used for fencing and the like are of little significance. While Halvorsen Hall (1970) has social value for its associations with community groups, the fabric of the building is of little significance. The present state of the Bottle Depot site is intrusive. Car parking within the park is intrusive</p>
Robertson Park and Archaeological Sites	176 Fitzgerald Street	✓	A	8705	



PLACE NAME	PROPERTY ADDRESS	STATE REGISTERED PLACE	MANAGEMENT CATEGORY	INHERIT PLACE NUMBER	STATEMENT OF SIGNIFICANCE
Hyde Park Hotel	331-367 Bulwer Street		B	14914	The Hyde Park Hotel is of considerable social significance as a continuously licensed and operating hotel since the last 19th century. It has been a landmark venue throughout that period and has marked the centre of its neighbourhood. It has close associations with the Perth Jazz Society and WA Jazz Club and has long been the venue for live jazz performance by musicians of international, national and local acclaim.
Residence	306 Charles Street		A	17452	The house, at 306 Charles St, has social significance as the residence Robert Browne, one of the sons of the founder of Brownes Dairy. It was built in close proximity to the dairy factory (former). It is an exemplar of the Interwar Arts and Crafts bungalow style.
Dwelling	11 Knutsford Street		B	11442	The house at No. 11 Knutsford Street is a fine and delightful example of the Federation Queen Anne style, constructed in weatherboard, that has been refurbished to a high level of integrity.
House	154 Vincent Street		B	8762	The large and impressive house at No 154 Vincent Street is a fine example of the Federation Queen Anne style, and is an important townscape element.
Baptist Church and Hall (fmr)	315 Fitzgerald Street		B	2213	North Perth Baptist Church and Hall (former) is a good example of the Federation Romanesque style, which contributes significantly to the townscape as a landmark located at a prominent intersection. Historically it is significant for associations with the Baptist Church, its local congregation for worship and the social interaction with the local community.
Three Houses	1 3 & 7 Leake Street		B	18027	The bungalows, at 1,3 & 7 Leake street are three fine examples of their style and period with 1 and 7 being representative and, perhaps, exemplars of the Federation Queen Anne style. The cohesive group demonstrates substantial middle class dwellings of the period, in the Monastery Grounds Estate
House	27 Forrest Street		B	18004	The infill house, at 27 Forrest Street, is an unusual and good example of the Interwar Old English style that was fashionable for some substantial middle class housing of the period. The style is relatively uncommon within the Town of Vincent although there are several examples in neighbouring areas such as the City of Stirling.
Semi-detached dwelling	60-62 Palmerston Street		B	11444	The semi-detached pair of dwellings at No 60-62 Palmerston Street are a fine example of Federation Cottages that contribute to the quality and diversity of Palmerston Street.
North Perth Police Station	81 Angove Street	✓	A	2212	North Perth Police Station, a single-storey brick and iron office and former quarters exhibiting stylistic details of the Federation Free style, has cultural heritage significance for the following reasons: <ul style="list-style-type: none"> <li>the place is the first police station built in North Perth and represents the continuing presence of the Police Force in this area since the early 1900s; the place is associated with Hillson Beasley, the Chief Architect for the government in 1907, and Senior Police officers who were in charge of, and resided at this police station; and,</li> <li>the place represents law and order, and more specifically represents in the development of the Western Australia Police Forces (the establishment of suburban/rural police stations).</li> </ul>
Federation Cottages	14 & 16 Forrest Street		B	18003	The subject dwellings are good intact pair of Federation Cottages constructed as identical dwellings c1906.
House	136 Vincent Street		A	8759	The impressive and prominently located house at 136 Vincent Street is an exemplar of the Federation Queen Anne style, with some of the finest extant detail in the district. It is a important townscape element.
North Perth Post Office (fmr)	21A View Street		A	2215	North Perth Post Office (fmr), a single-storey brick and tile building situated on a prominent rise within a precinct of similar places featuring the Federation Free style, has cultural heritage significance for the following reasons: <ul style="list-style-type: none"> <li>the place occupies a prominent street corner and is an important part of the North Perth townscape;</li> <li>the place contributes to an understanding of the development of the suburbs north of the railway (North Perth);</li> <li>the place represents the introduction of the official purpose built Post Office in North Perth in 1916, and has had a continuous presence since that time; and</li> <li>the place is a good example of a small scale public building built in the Federation Free style.</li> </ul> <p>A red brick skillion roofed building c. 1970, located on the eastern boundary is considered to have little heritage significance.</p>

PLACE NAME	PROPERTY ADDRESS	STATE REGISTERED PLACE	MANAGEMENT CATEGORY	INHERIT PLACE NUMBER	STATEMENT OF SIGNIFICANCE
House	17 Alfonso Street		B	17958	The house at 17 Alfonso Street is a fine and representative example of local architect Ernest Hamilton, in the Federation Queen Anne style that, with its corner location, makes a notable contribution to the character of the Monastery Grounds Estate after the Redemptorist subdivision in 1903.
House	164 Chelmsford Road		B	17989	The house at No. 164 Chelmsford Road is a good example of Federation Arts and Crafts style architecture applied to a standard model of bungalow of the period.
House	132 Vincent Street		B	8757	The house at 132 Vincent Street is a good example of an asymmetrical Federation Bungalow with a high level of integrity.
House	156 Vincent Street		B	8763	This large and rambling house at 156 Vincent Street is a good example of Federation Queen Anne style, adapted with extensions to provide accommodation suitable for a doctor. Its size makes it an important townscape element.
Flats	10 Alma Road		B	17959	The double storey block of flats at No. 10 Alma Road is a fine example of the Interwar Contemporary style of 'bachelor' living that was becoming popular as a new form of urban living during the Interwar period, as it emerged from the Depression. The flats demonstrate the increasing variety of types of near city centre residences at the start of World War Two. It is the only intact example in the town featuring an imposing central set of steps. The place marks the increasing complexity in the character of this formerly single residential street.
Three Houses	105, 107 & 109 Alma Road		B	17960	The properties at Nos. 105, 107, 109 Alma Road are a cohesive and intact example of three Federation bungalow dwellings on neighbouring sites. The group represents part of the new subdivision of the North Perth Estate close to the city in the early 1900s. The group makes a significant contribution to the character of the area.
Tudor Lodge	57 & 59 Chelmsford Road	✓	A	17150	<p>Tudor Lodge, a single-storey brick and stucco tiled-roof dwelling in the Inter-War California Bungalow style, set in a generous garden with grotto-style aviaries, together with brick and tile and metal construction outbuildings, has cultural heritage significance for the following reasons:</p> <ul style="list-style-type: none"> <li>the place was the first Department of Child Welfare hostel that provided care for smaller numbers of children in a more home-like atmosphere, and served as a model for future child hostels in the State;</li> <li>the place is a fine, early example of the Inter-War California Bungalow style, in an expansive garden with remnant Gardenesque style features;</li> <li>The garden contains the only known extant examples of large scale, grottostyle rock-work in a private garden from the Federation or Inter-War periods in Western Australia;</li> <li>the place was designed and built by established builder E. T. Russell as his family home, and is representative of a large private residence adapted for institutional housing;</li> <li>the place was established as an institution in the post-World War Two period when the Department of Child Welfare was expanding its services, in particular for working boys of local and migrant origins, and is a benchmark in the development of government policy and practices related to the institutional or 'out of home' care for children;</li> <li>places such as Tudor Lodge are likely to be valued by those in the wider community who were accommodated at the hostel in their youth, including former child migrants and working boys; and,</li> <li>the place is valued by the community of the Town of Vincent for aesthetic reasons as a notable residence.</li> </ul> <p>The garage has some significance. The shower and toilet facilities building has low significance. The metal-construction shed is intrusive. Roof mounted air conditioning and brick infill and aluminium windows on the verandahs are intrusive.</p>
Bethany, Indonesian Church, (former Uniting Church, former St Margaret's Presbyterian Church)	129-131 Raglan Road		B	16752	Bethany is the former Uniting Church, at 129-131 Raglan Road. It is one of the finest examples of the Federation Romanesque style, to the design of well known architect John Hine. The place has earlier associations with the Presbyterian Church, the Uniting Church and, more recently, the Indonesian Parish of the Uniting Church illustrating the changing demographics of the Christian Church in the late 20th century and the multiculturalism of the area.

PLACE NAME	PROPERTY ADDRESS	STATE REGISTERED PLACE	MANAGEMENT CATEGORY	INHERIT PLACE NUMBER	STATEMENT OF SIGNIFICANCE
House	3 Mignonette Street		B	27259	<ul style="list-style-type: none"> <li>The place is a tuck pointed red brick and corrugated metal roofed dwelling, constructed circa 1912. The place is representative of the Federation Bungalow style of dwelling, typical of much of the modest-scale residential development in North Perth constructed during the Federation period.</li> <li>The place has moderate aesthetic value as a good and intact example of the Federation Bungalow style.</li> <li>The place has moderate historic value as part of a pattern of suburban development in North Perth. It is one of the earliest dwellings constructed in phase one of the Christmas Hill estate, which was the second subdivision in North Perth. The existing outhouse is rare and possibly is the last house to have a toilet next to the right of way in the local area. This contributes to an understanding of the daily life in the early twentieth century when houses were not connected to the sewerage system.</li> </ul>
PERTH					
Bowra and O'Dea Beaufort St	359 Beaufort Street	✓	A	8586	<p>Bowra and O'Dea, Beaufort Street, (1937) comprising a single storey, rendered brick office, chapel, and adjacent residence, all in the Inter-War Functionalist style, with a covered driveway and garage, and recent, rendered brick mortuary, has cultural heritage significance for the following reasons:</p> <ul style="list-style-type: none"> <li>the place exhibits a streamlined effect that implies cleanliness and efficiency, reflecting the modernisation of the funeral industry at the time of its construction;</li> <li>while preserving a sense of solemnity, restraint and discretion essential to the sombre nature of its intended business;</li> <li>the place represents the shift from undertaking to funeral direction that occurred at the beginning of the 20th century, namely the phasing out of wheelwrighting and cabinet making as part of the business, and the provision of modern, specialized services;</li> <li>the place is rare as a purpose built mortuary, chapel and funeral business office that still operates with its intended function, and is associated with two of Western Australia's most prominent and longest running firms in the funeral industry, Arthur E. Davies and Co. and Bowra and O'Dea; the place is a fine example of a small-scale building in the Inter-War Functionalist style, and a highly intact example of the work of architect Samuel Rosenthal; and</li> <li>the place is rare for the application of the Inter-War Functionalist style to a building that is used, at least in part, for religious purposes.</li> <li>the place has strong landmark qualities and contributes to the community's sense of place due to its distinctive design on a prominent corner site, and it holds a special place in the community of those who have mourned the loss of loved ones there.</li> </ul> <p>The recent (1997) mortuary has little heritage significance.</p>
Newcastle Club Hotel (fmr)	268 Newcastle Street		B	2082	<p>The former Newcastle Club Hotel is a fine and substantial building of its time in the Federation Free Classical style. Through its prominent corner location the place has always been a landmark, that originally showcased the Stanley Brewing Company and, more latterly, was a notable nightclub.</p>

PLACE NAME	PROPERTY ADDRESS	STATE REGISTERED PLACE	MANAGEMENT CATEGORY	INHERIT PLACE NUMBER	STATEMENT OF SIGNIFICANCE
Stables (fmr) 17 Lindsay Street	15-17 Lindsay Street	✓	A	8723	<p>Stables (fmr), 17 Lindsay Street, a two storey brick and iron building, has cultural heritage significance for the following reasons:</p> <ul style="list-style-type: none"> <li>the place, a modest building of utilitarian design with a simple yet well proportioned façade, is a fine example of stables and other such ancillary buildings dating from the early twentieth century, which were typically of a utilitarian design free of superfluous ornament, and forms an integral component of an historic and aesthetic precinct of buildings including the Henry Cassidy Moore's Union Bakery (fmr) on the opposite side of the street;</li> <li>the place is rare as an example of a commercial stables building constructed during the early twentieth century still extant within the inner Perth area;</li> <li>the place is illustrative of a period during the first half of the twentieth century, prior to the use of motor vehicles, when commerce required the use of horse drawn vehicles;</li> <li>the place, which was used for stables from 1913 to the 1950s, is important as an integral element of Henry Cassidy Moore's Union Bakery (fmr), comprising a three-storey bakery, shop, flour mill, office and single storey residence, situated on the opposite side of Lindsay Street; and</li> <li>the place contributes to the community's understanding of the pattern of inner-city life and the commercial operation of a large bakery during the first half of the twentieth century</li> </ul>
Perth Mosque	427-429 William Street		A	2156	Perth Mosque is a notable and unique place within Northbridge in the Federation and Late 20th Century Immigrant Nostalgic style. It has close associations with the earliest Afghans in Western Australia, the cameleers, who facilitated much of the State's exploration. It is highly valued by the growing and diverse Muslim community and is a highly tangible demonstration of multiculturalism.
Attached Houses	175-179 Lake Street		A	18023	Apart of the Lake Street Orange Orchard Estate semi-detached (INHERIT ID 18024) - The semi-detached pair (Ensenada & Coronada) at 165-167 are a fine and unusual example of a Federation Filigree terrace pair. It makes a significant contribution to the streetscape particularly with the considerable plantings in the front garden. It demonstrates changes in the social status of the area. The semi-detached pairs, 169-173, 175-179 & 181-185 Lake Street, are good and representative examples of the Federation Bungalow style that contribute to the streetscape and character of the area. The places have associations with the neighbouring Brooking Park Estate.
House	156 Brisbane Street		B	17975	The house, at 156 Brisbane Street is a fine and representative example of a substantial Federation Arts and Crafts dwelling, constructed by builder Thomas Worsick Firth as his own residence.
Lindsay Street Terraces	54-60 Lindsay Street		B	8724	The terraces at No. 54-60 Lindsay Street demonstrate the suitability of this housing type to satisfy current housing needs a century after their construction. The size and scale of the group contribute to the streetscape.
Weld Sqaure	180 Beufort Street		B	8522	<p>The place has moderate historic value as it is one of a few urban parks close to the city that originates from the late nineteenth century, using ideas from the Garden City and City Beautiful movements.</p> <p>The place has moderate social value as it was used by Noongar people as a camping ground and meeting place and continues to have great importance for Aboriginal people and local community.</p> <p>The place has some aesthetic value as its large grassed area and the mature trees are valued by the local and wider community.</p>
Caltex Service Station	342 Beaufort Street		B	4175	The service station was constructed by the innovative Wood family as one of the earliest examples of a Super Service Station in the Perth area. Its remaining original fabric is distinctive in its detailing and represents early associations with the burgeoning motor vehicle industry. Its early use of the Interwar Art Deco style gave a progressive connotation.

PLACE NAME	PROPERTY ADDRESS	STATE REGISTERED PLACE	MANAGEMENT CATEGORY	INHERIT PLACE NUMBER	STATEMENT OF SIGNIFICANCE
Mackays Aerated Waters Factory (fmr)	10-22 Money Street	✓	A	8728	<p>Mackays Aerated Waters Factory (fmr), a single- and double-storey rendered brick and iron building, has cultural heritage significance for the following reasons:</p> <ul style="list-style-type: none"> <li>the place is valued for its aesthetic contribution as one of the key components of the Money Street streetscape, with its substantial formal street façade, and is a recognised landmark in the community;</li> <li>the place is a rare example of a light industrial building of the interwar period, in the Functionalist style, few of which are extant in inner city Perth;</li> <li>the place reflects the commercial development in Perth during the economic growth of the mid to late 1920s. Mackays Aerated Waters Factory was one of a number of locally based soft drink manufacturers that thrived in Western Australia in the early 20th century, prior to the domination of the market by multinational companies;</li> <li>the place is associated with, and represents the work of the architectural firms, Oldham Boas &amp; Ednie Brown (1928) and Powell, Cameron and Chisholm (1942-43); and,</li> <li>the place is associated with three generations of the Thomson family who operated the Mackays Aerated Waters Factory from 1928 to 1966, initially in association with Francis McKay until his death in 1933.</li> <li>The 1962 addition on Lot 124 is not considered significant.</li> </ul>
West Australian Boot Manufacturing Company (fmr)	117 Lake Street		B	8717	<p>The former West Australian Boot Manufacturing Company structures are surviving elements of a major manufacturing operation and employer in the district. The place is a good example of robust Federation/ Interwar Warehouse style. It has been adapted for contemporary residential development. The history of the place contributes to an understanding of the development of the area.</p>
Baker Avenue	1-19 Baker Avenue		B	17967	<p>Baker Avenue has some aesthetic significance as a cohesive row of dwellings exhibiting characteristics of the Inter-war bungalow style of architecture, which face Birdwood Square and provides a coherent character with varied detail. The dwellings contribute to the quality and setting of the surrounding area, and provide an important contribution to the vista of Birdwood Square. Its aesthetic qualities as a whole are defined by the overall form, style, height, setback and selection of materials of the place in contributing to the uniformity of the streetscape. Baker Avenue has some historic value as the dwellings were developed at a time when there was a change of focus of suburban development from development driven by land speculation to planned communities with particular emphasis placed on amenity as encouraged through the Garden City movement</p>
Shop and Semi-detached Houses	99 - 103 Brisbane Street		B	17973	<p>The former shop and semi-detached dwelling at Nos. 99 and 101 - 103 Brisbane Street were constructed in the later years of the 19th century and the early years of the 20th century, in the vernacular styles of the Late Colonial period. The group demonstrates the nature of modest and unsophisticated urban development during this period.</p>
Cottages	5-11 Cowle St West		B	17992	<p>The houses at Nos. 7, 9 and 13 &amp; 15 Cowle Street demonstrate the rapidity of changing forms and styles of inner city workers housing during the transition from Late Colonial to the Federation Period.</p>
House	18 Myrtle Street		B	8730	<p>The house at No. 18 Myrtle Street is a good and intact typical example of a modest weatherboard Federation Bungalow, that informs of development of the area. It has associations with, at least, two generations of the Bayman family.</p>
Two pairs of Semi-detached Houses	1-7 Money Street		B	18037	<p>The subject dwellings are significant as a cohesive group of relatively intact representative examples of 1894 and 1895 Federation bungalows in the form of 2 pairs of mirror image duplexes. The place represents part of the new subdivision for workers housing in the inner city during the gold boom period. It makes a significant contribution to the streetscape and character of the area.</p>
Commercial Building	323 William Street		B	No ID	<p>The commercial building at 323 William Street is a notable example of the Interwar Art Deco style. It is one of a small number of Art Deco corner landmarks in Perth. It is historically significant for associations with the Midland Bus Company and use as a bus depot.</p>
Duplex	395-397 William Street		B	18070	<p>The duplex at No. 395 William Street is a comparatively rare example of the Federation Georgian style and of a development model more typical of the gold rush periods of the eastern states, than of the Gold Boom period in Perth. Its unusualness contributes to the immediate streetscape character.</p>

PLACE NAME	PROPERTY ADDRESS	STATE REGISTERED PLACE	MANAGEMENT CATEGORY	INHERIT PLACE NUMBER	STATEMENT OF SIGNIFICANCE
Meade House	290 Beaufort Street		B	8589	Meade House is a representative example of the Federation Free Classical style of commercial development, which complemented the similar style of the Brisbane Hotel opposite. Its development in 1915 reinforced the commercial node which has developed around the Brisbane Street/Beaufort Street intersection. Its fortunes have reflected the changes in fortunes of this part of the district since World War One.
Five Shops	197-205 Brisbane Street		B	8592	This row of 5 shops is a fine example of the Federation Italianate style, located at 197-205 Brisbane Street, at the corner of Lake Street. The shops were established at the same time as the former Royal Standard Hotel and formed a new neighbourhood centre. The changing activities of the shops reflects the social, ethnic and financial changes in the neighbourhood during the century of their continued operation.
Bulwer Avenue Precinct	3, 5-7, 9, 11, 13, 17, 19 Bulwer Avenue		A	18497	Bulwer Avenue Group is a notable and intact turn of the twentieth century development of detached houses in the Federation Anglo Dutch and Arts & Crafts styles, which occupies the length of a whole streetblock opposite the Highgate Primary & Infant Schools. The subdivision was made possible by transferring a strip of land from the schools to enable Bulwer Avenue to be developed as a public road.
Lake Street Orange Orchard Estate semi-detached	165-185 Lake Street		A	18024	The semi-detached pair (Ensenada & Coronada) at 165-167 are a fine and unusual example of a Federation Filigree terrace pair. It makes a significant contribution to the streetscape particularly with the considerable plantings in the front garden. It demonstrates changes in the social status of the area. The semi-detached pairs, 169-173, 175-179 & 181-185 Lake Street, are good and representative examples of the Federation Bungalow style that contribute to the streetscape and character of the area. The places have associations with the neighbouring Brooking Park Estate.
Five Houses	14-22 Church Street		B	8702	No. 14-22 Church St is of aesthetic and historic significance for the uncommon but fine and intact examples of Federation Italianate style architecture in a residential situation with a high level of decoration to what would otherwise be modest dwellings in a formal row arrangement, that demonstrates the social status of that area at the time.
Semi-detached pair	140-142 Brisbane Street		B	17974	This terrace pair, at 140-142 Brisbane Street, are good examples of the Federation Italianate style. Constructed prior to the extension of William Street north of Brisbane Street, they represent the standard of inner city workers housing of the eastern states, transposed to Perth, following the commencement of the Gold Boom period.
Single storey duplex	193-195 Lake St		B	18026	The single storey duplex at Nos. 193 - 195 Lake Street constructed in the Federation Free Classical Style are a good example of their type and form part of the Brooking Park Estate, named after well known surveyor and developer J S Brooking, an active participant in the development of the suburb.

PLACE NAME	PROPERTY ADDRESS	STATE REGISTERED PLACE	MANAGEMENT CATEGORY	INHERIT PLACE NUMBER	STATEMENT OF SIGNIFICANCE
Highgate Hill Police Station Lockup & Quarters (fmr)	57 Lincoln Street	✓	A	4282	<p>Highgate Hill Police Station, Lockup and Quarters (fmr), a neighbourhood/ community police facility of the Gold Boom period, comprising a standard bungalow style former Police Station and Lockup and a Federation Bungalow style former Police Quarters, both single-storey brick and iron structures, has cultural heritage significance for the following reasons:</p> <ul style="list-style-type: none"> <li>the changing role of the place demonstrates a significant change in police activity on site from a local community focus to a specialised wider community focus;</li> <li>the place had an important new role as the police wireless centre for the metropolitan region, officially commencing in 1942. It later developed into a telegraph centre and VHF communications centre for servicing the state and formed part of a national communications system;</li> <li>the place is valued by past and present members of the police force, its union and historical society, as it represents several strands of the history of police activity in Western Australia over the past 100 years since 1897. These include the development of suburban police stations, the community role of policing, police communications and road safety</li> <li>the place is a surviving public facility from the initial period of development of Highgate Hill and demonstrates the standard of a community police facility of the period;</li> <li>the place forms part of a streetscape that contributes to the local community's sense of place</li> <li>the former Police Station and Lockup is derived from a standard model developed in 1894;</li> <li>the place is associated with notable architects, Robert J Haddon, Hillson Beasley and William B. Hardwick. Haddon went on to become an architect of national importance; and,</li> <li>the place had a continuing role in the Highgate community until its closure as a police station in 1941 and was associated with the murder of Sergeant Marks in 1928, an event which prompted the introduction of firearms licensing in Western Australia.</li> </ul>
Highgate Primary School	147 Lincoln Street	✓	A	2180	<p>Highgate Primary School, comprising a Senior School (1895) and former Infants' School (1900) in the Federation Arts and Crafts style; former Teacher's Quarters in a modest Federation Queen Anne Style (1898); Shelter Shed (c.1948), former Manual Training Room (1914) and Pavilion Classroom, from the Gold Boom and interwar periods; in varying combinations of face brickwork, limestone, render and corrugated iron, has cultural heritage significance for the following reasons:</p> <ul style="list-style-type: none"> <li>the place is a rare example of a group of school facilities predominantly in Federation styles dating from the 1890s, and the former Teacher's Quarters is one of the few remaining in the metropolitan area;</li> <li>the individual components of the place collectively form a handsome, efficient, adaptable and integrated cultural environment of a large predominantly Federation period public school, despite being developed incrementally;</li> <li>the place demonstrates, through its incremental additions and consistently large school population, the rapid development of the Highgate area in the first half of the twentieth century, the development of facilities at the place, and changes in the nature of usage of those facilities, demonstrates the evolution of public school education from 1895 to the 1930s; and,</li> <li>the place has social significance for past and present students, staff and community, connected to the school through its continual use as an educational facility from 1892 to 2003, its distinctive appearance, and as a large, longstanding, educational facility, in the local area.</li> </ul> <p>Elements of little significance include toilets, store, Assembly Area and portable Classroom.</p>

PLACE NAME	PROPERTY ADDRESS	STATE REGISTERED PLACE	MANAGEMENT CATEGORY	INHERIT PLACE NUMBER	STATEMENT OF SIGNIFICANCE
Maltings Plant (fmr)	33-35 Stuart Street	✓	A	4648	<p>Maltings Plant (fmr), a former industrial complex with remnant structures, including No.2 Malthouse (c. 1899), Stables (c. 1907), Wesfarmers Honeypond Building (c. 1925), Kilns No. 1 (c. 1935), No.2 (c. 1939), and No.3 (c. 1949), the Malt Cleaning Shed (pre 1937) , Barley Store (c. 1937) and plant and moveable artifacts, has cultural heritage significance for the following reasons:</p> <ul style="list-style-type: none"> <li>the place contains building fabric that is of appealing aesthetic and tactile character and consists of industrial building forms that are unusual in their context;</li> <li>the presence of the place contributes towards an understanding of cultural and environmental development of the area now known as Northbridge and thus contributes to the area's sense of place;</li> <li>the place was an integral part of the brewing industry in Western Australia and the local production of malt since the late 1800s; and, the place is associated with a number of persons prominent in the history of Western Australia.</li> <li>Only the ground floors (to first floor level) of No 2 Malthouse and Kilns No 1 and No 2 are extant. Other remnant structures have been altered for the purposes of residential adaptation.</li> </ul>
House	63 Parry Steet		B	4199	<p>The place has moderate aesthetic value as it is a fine and representative example of a Federation bungalow style of architecture, which contributes to the character of the area.</p> <p>The place has some historic value as it reflects the expansion and development of residential buildings on the city fringes during the rapid population increase of the 1890's gold boom and the early years of the twentieth century.</p>
Throssell House	15 Throssell Street	✓	A	2993	<p>Throssell House, Perth, a single-storey limestone and brick residence with Marseilles pattern terracotta tiled roof, including a cellar, loft and belvedere, designed in the Federation Queen Anne style, has cultural heritage significance for the following reasons:</p> <ul style="list-style-type: none"> <li>the place is a fine example of a well-designed Federation Queen Anne style residence, which retains most of its original external features and the intended qualities of many internal spaces; and,</li> <li>the place was constructed c.1905 as part of the suburban residential development associated with the expansion of Perth and its outlying suburbs, demonstrates the early residential development of the Hyde Park (known as Third Swamp until 1899) vicinity and provides a visual and historic connection between the suburban development and the establishment of the park.</li> </ul> <p>The fabric of later additions and alterations, including bathroom, laundry and kitchen fittings, reproduction fireplaces, surrounds, mantles, fireboxes and hearths, the whole of the family room and store, material relating to the refit of the loft, alterations to the west and south of the house, the belvedere, sunhoods to the north elevation, window grilles and leadlights in the north and south facing windows, are of little significance.</p> <p>The superstructure of the belvedere is intrusive.</p> <p>The elements of the grounds are generally of little significance, with the exception of the Canary Island Palm, which is of some significance, and the Cocos Palms, which are intrusive.</p>
Dwelling 'hand' pair	134-136 Summers Street		B	11447	<p>The pair of limestone houses at Nos 134-136 Summers Street are a fine and intact matching pair of Federation Georgian bungalows, which are associated with Mrs Eliza Gibbs, the developer and original owner.</p>
Semi-detached Houses	43-45 & 51-53 Robinson Avenue		B	18049	<p>The semi-detached dwellings at Nos. 43 - 45 and Nos. 51 - 53 Robinson Avenue are a cohesive group of two similar semi-detached mirror pair duplexes. They are an unusual group example of intact Federation bungalow duplexes whose rhythm, scale, form and fabric contribute to the character of the area.</p>



PLACE NAME	PROPERTY ADDRESS	STATE REGISTERED PLACE	MANAGEMENT CATEGORY	INHERIT PLACE NUMBER	STATEMENT OF SIGNIFICANCE
No.4 Substation	31 Stuart Street	✓	A	17629	<p>Parent Place - Electricity Substations, Perth (INHERIT ID 25118 Electricity Substations, Perth, a non-adjacent group of four two-storey red brick buildings with stucco detailing, in the Federation Warehouse style, constructed to a standard plan that was modified to suit each location, has cultural heritage significance for the following reasons:</p> <ul style="list-style-type: none"> <li>the four buildings are a rare example of a complete set of early twentieth-century electricity substations relating to the initial development of an electricity network in Western Australia;</li> <li>the four buildings were constructed by Perth City Council to operate as the main line substations in conjunction with the State Government's East Perth Power Station (1916), the first centralised electricity supply in Perth, and one (No.4 Substation, Stuart Street) continued to operate as an electricity substation into the twenty-first century;</li> <li>the four buildings have high scientific value for their ability to contribute to the understanding of the development of power to the metropolitan region of Perth, especially No.4 Substation, Stuart Street, which retains much of its transformers and other machinery;</li> <li>the four buildings are good examples of utilitarian structures designed in the Federation Warehouse style to fit within city streetscapes, an approach to constructing and siting industrial buildings that is no longer practiced;</li> <li>construction of the substations and installation of the plant was supervised by international company Merz &amp; McLellan, especially Charles McLellan, who advised the City of Perth and State Government regarding electricity production and was influential in the decision to centralise and to switch from direct to alternating current; and,</li> <li>the buildings were designed by prominent and prolific Western Australian architect Jack Learmonth Ochiltree and are a good example of his design approach to functional buildings.</li> </ul>
Duplex	123 Glendower Street		B	18007	<p>The duplex, at 123 Glendower Street, is a fine example of the Late Modern style. It was commended in the RAlA (WA Chapter) Awards - Multi Residential program in 2000.</p>
Terrace Houses	235-241 Beaufort Street	✓	A	3134	<p>Terrace Houses, 235-241 Beaufort Street, comprising four three and four storey brick, stucco, and iron terrace houses in the Federation Filigree style, has cultural heritage significance for the following reasons:</p> <ul style="list-style-type: none"> <li>the place is a very fine, substantial, and relatively intact example of terrace houses in the Federation Filigree style; Nos. 235-241 are rare as a group of three-storey terrace houses constructed in the State in the Federation-period;</li> <li>the place is a distinctive set of buildings, with Nos. 235-241 being a significant visual focus and the tower of No. 235 being a very prominent and well-known landmark in the context of Beaufort Street;</li> <li>the place was constructed in 1897 as some of the large number of new boarding houses constructed in the State in the 1890s to accommodate the population increase associated with the gold boom, and provides evidence of the historical provision of lodging in the North Perth area, an inner-city residential function that is no longer common; and,</li> <li>for at least twenty years from 1899, 237 Beaufort Street was used as one of a small number of nurses' homes in Perth, which provided accommodation, employment services and advocacy for private nurses, in a central area close to the city.</li> </ul> <p>Garages to the rear of the northern properties Nos. 235-241 are of little significance. Modern red brick fences to the rear of properties have little significance.</p>

PLACE NAME	PROPERTY ADDRESS	STATE REGISTERED PLACE	MANAGEMENT CATEGORY	INHERIT PLACE NUMBER	STATEMENT OF SIGNIFICANCE
Terrace Houses	225-227 Beaufort Street	✓	A	3133	<p>Terrace Houses, 225-227 Beaufort Street, comprising two, two storey brick, stucco, and iron terraces houses in the Federation Filigree style, has cultural heritage significance for the following reasons:</p> <ul style="list-style-type: none"> <li>the place is a very fine and relatively intact example of terrace houses in the Federation Filigree style; the place has some very fine and unusual distinguishing features such as the side entry of No. 227. This unusual and intact element distinguishes Terrace Houses, 225-227 Beaufort Street from terrace houses elsewhere in Western Australia and contribute to its rarity value; and,</li> <li>the place was constructed in 1897 as some of the large number of new boarding houses constructed in the State in the 1890s to accommodate the population increase associated with the gold boom, and provides evidence of the historical provision of lodging in the North Perth area, an inner-city residential function that is no longer common.</li> </ul> <p>Modern red brick fences to the rear of properties have little significance.</p>
Old Street sign and semi-detached dwelling	189 Lake Street		B	18025	<p>Street sign: The extant old street signs are enameled artifacts which demonstrate the variety of colourways and typefaces used in the suburbs early street signage. Their significance is enhanced by remaining in location.</p> <p>Dwelling: The place has some aesthetic value as a good example of a Federation Free Classical style semi-detached duplex characterised by its simplicity, contrasting materials and texture, front parapet and symmetry contributing to the quality of its immediate setting. The semi-detached duplex at Nos. 189 - 191 Lake Street constructed c1908, together with the semi-detached duplex adjacent at Nos. 193 - 195 Lake Street constructed c1910 have some historic value as a complementary pair of Federation Free Classical style semi-detached duplexes that demonstrate the character and scale of semi-detached dwellings constructed on the city fringes as a response to the rapid population increase of the 1890s Gold Boom and the early years of the 20th Century.</p>
House	180 Palmerston Street		B	18085	The house at 180 Palmerston Street has aesthetic value beginning as a modest Federation Bungalow and progressively developing into a substantial dwelling in a prominent location.
Two Houses	157-159 Palmerston Street		B	8738	The semi-detached pair of dwellings at 157-159 Palmerston Street are a fine example of Federation Cottages that contribute to the quality and diversity of Palmerston Street.
Colmel House	241 Stirling Street		A	18053	Colmel House, at No. 241 Stirling Street, is a rare and important example of a grand house in the Federation Italianate style. It is one of very few grand houses to have been constructed in the Town, whilst it is a model of grand house which was built in a number of locations within Peppermint Grove. The former residence for Henry Bell, it was converted to a private hospital in 1910 and has continued to be used for hospital/health facility purposes since that time, making it a focus for health services to the district for most of its century of existence.
Old Street Signs	2 Dangan Street		B	18078	The extant old street signs are enameled artifacts which demonstrate the variety of colourways and typefaces used in the suburb's early street signage. Their significance is enhanced by remaining in location.
Two Houses	163-165 Palmerston Street		B	8739	The dwelling form part of a semi-detached pair and are a fine and unique example of a late Colonial Georgian duplex that contributes to the quality and diversity of Palmerston Street.
Semi-detached Offices	104-106 Parry Street		B	18042	The place has some aesthetic value as a good example of a semi-detached dwelling constructed in the Federation style. The place has some aesthetic value in terms of its contribution to the quality of its setting along Parry Street. The place has some historic value as one of the earlier dwellings constructed in Parry Street reflecting the expansion of development of residential buildings on the city fringes during the rapid population increase of the 1890's Gold Boom and the early years of the 20th Century.
Semi-detached pair	21 Money Street		B	18038	Former dwellings, 23-25 Money Street are significant as a fine representative example of Federation Italianate architectural style in the intact remains (facade) of the mirror duplex pair. The place represents part of the new subdivision for workers housing in the inner city during the goldboom period. It makes a significant contribution to the streetscape and character of the area and demonstrates the evolution of the area through refurbishment of original housing stock.

PLACE NAME	PROPERTY ADDRESS	STATE REGISTERED PLACE	MANAGEMENT CATEGORY	INHERIT PLACE NUMBER	STATEMENT OF SIGNIFICANCE
Dilhorn	2 Bulwer Street	✓	A	2168	<p>Dilhorn, a two storey brick and tile residence in the Federation Queen Anne style, has cultural significance for the following reasons:</p> <ul style="list-style-type: none"> <li>the place has important historical associations with the development of Perth and its inner suburbs directly following the 1890's gold rush, and with William Thorley Loton and John Talbot Hobbs, prominent citizens of Perth at the turn of the century, who helped shape the nature of Western Australia and its built environment;</li> <li>the place has aesthetic value as a finely designed and skilfully detailed and decorated, substantial Federation Queen Anne house that is largely intact; and</li> <li>has social value in the places landmark status and its ability to illustrate a way of life experienced by the affluent at the turn of this century.</li> </ul> <p>The gun in the front yard contributes little to the significance of this site. The Married Quarters is considered to be of low significance and even intrusive. The carport and bitumen covered garden</p>
Perth Oval	27 Bulwer Street	✓	A	2992	<p>Perth Oval, consisting of an oval, a brick Inter-War Mediterranean style entry gates building at the north-west perimeter of the reserve and a salmon brick Post-War International style grandstand building, has cultural heritage significance for the following reasons:</p> <ul style="list-style-type: none"> <li>the north-west entry gates building (c.1910) is a good example of the Inter-War Mediterranean architectural style; the north-west entry gates building is uncommon;</li> <li>the main grandstand, administration and clubroom building (1956 with extensions 1966) is a meeting place for athletes and patrons;</li> <li>the place as a whole is highly valued by the community for the social and cultural associations of sporting and other outdoor entertainment over the years;</li> <li>as the home of the East Perth Football Club, the place contributes to the local community's sense of place; the place, with its variety of building styles, is characteristic of its class, that of home football ground for an Australian Rules Football League side; and,</li> <li>the place as a whole, and the north-west entry gates building in particular, characterises a way of life and activity - that of community enjoyment of Australian Rules Football.</li> <li>The northern male toilet block (c.1920), the northern female toilet block (c.1930), the south-western entrance building (c.1950), the snack shop adjacent to the grandstand building (c.1960), the scoreboard (c.1960), the private residence east of Loton Park (c.1960), the south-western change rooms (c.1960), the south-western toilet block (c.1960), the eastern store (c.1970), the north and north-eastern stands (c.1970) and the south-east entrance building (c.1980) have a low degree of cultural significance.</li> </ul> <p>The kiosks, caravans and shipping containers have little cultural significance.</p> <p>Loton Park Tennis Club is on a separate title and is a Registered Place</p>
House (fmr Ormiston College, Presbyterian Ladies College)	140 Palmerston Street		A	8737	<p>The two storeyed house at 140 Palmerston Street is a fine example of the Federation Queen Anne style. It is a notable place in a street of notable places, that demonstrates the prestige of Palmerston Street at the time it was developed. The place has associations with the private school of Miss Wilson known as Ormiston College which was to become Presbyterian Ladies College</p>
Triplex	15 Glendower Street		B	8711	<p>The triplex at No. 15 Glendower Street is a good example of the Interwar Art Deco style of architecture which, as a corner property, contributes to the streetscape and character of the area.</p>
Brisbane Hotel	292 Beaufort Street		B	1964	<p>Brisbane Hotel is a flatiron shaped landmark at the junction of Beaufort and Brisbane Streets, on the route of the tramline along Beaufort Street. Constructed in 1898 in the Federation Free Classical style It has operated continuously as licensed premises since 1898, providing a social focus for the neighbourhood. In more recent years it has had associations with the Effie Crump Theatre and its patrons.</p>
Co-Masonic Temple	110 Brisbane Street		A	8590	<p>The place is associated with architect William G Bennett, and loosely based on his 1934 Nedlands Park Masonic Lodge. The place is a Co-Masonic Lodge, open to men and women.</p>

PLACE NAME	PROPERTY ADDRESS	STATE REGISTERED PLACE	MANAGEMENT CATEGORY	INHERIT PLACE NUMBER	STATEMENT OF SIGNIFICANCE
Brisbane Street Post Office (former)	6/115 Brisbane Street	✓	A	1971	<p>Brisbane Street Post Office (fmr) has cultural heritage significance for the following reasons:</p> <ul style="list-style-type: none"> <li>the building demonstrates the state government's provision of postal services to a suburban population rapidly expanding north of the railway line in the late 1890s;</li> <li>the post office demonstrates Temple-Poole's efforts to architecturally express civic and domestic functions in a modest sized suburban building;</li> <li>the building demonstrates the operation of an inner suburban postal office and the living conditions of a postal officer in Perth at the turn of the century; Brisbane Street Post Office (fmr), Perth 2 the building is the least altered of the few remaining inner suburban post offices designed by George Temple-Poole, the Government Architect; and,</li> <li>the Brisbane Street Post Office (fmr) is the most intact example of a late 1890s inner suburban post office, in Perth.</li> </ul>
Semi-detached pair	120 - 122 Brisbane Street		B	8591	<p>The semi-detached dwellings at 120-122 Brisbane St are a fine and comparatively early example of the Federation Queen Anne style and retains a very high level of integrity. It is an unusual, even rare, form of duplex residence that presents as a single house because of its deep form. It demonstrates an aspiration to appear as a more substantial single dwelling, unlike other more evident forms of grouped dwelling.</p>
Royal Standard Hotel (Northbridge Hotel)	210 Lake Street		B	1970	<p>Hotel Northbridge (former Royal Standard Hotel) is a pattern book plain Queen Anne style hotel of the period. There were numerous comparable examples in suburban and provincial locations. It dates from the period of hotel building in the suburb, which coincided with the early Gold Boom and the suburban developments north of Perth, such as the nearby Brookman/Moir precinct. The hotel has provided continuous hospitality services since its establishment and its pattern of ownership and operation has reflected that of suburban hotels.</p>
Residence	148 Palmerston St Perth		A	4568	<p>The house at 148 Palmerston Street is a singular example of the Federation Tudor style, which has become a landmark due to its rarity and uniqueness. It is associated with William W. Dartnall, prominent railways engineer.</p>
Parry Street Precinct	89, 93, 99, 103, 107, 111, 135, 139-141, 143, 145-149 Parry Street, 278 - 288 Pier Street	✓	A	11543	<p>Parry Street Precinct, a row of semi-attached and attached single storey brick residences of various styles, has cultural heritage significance for the following reasons:</p> <ul style="list-style-type: none"> <li>the precinct is rare as an example of a relatively intact streetscape of late nineteenth century and early to mid twentieth century buildings still extant the City of Perth;</li> <li>the place has significance as a cohesive streetscape of modestly and elaborately detailed residential buildings, encompassing a variety of architectural styles dating from the late nineteenth century and early to mid twentieth century;</li> <li>the precinct forms an integrated group of single storey residential buildings, which contribute, to the historic character of the area and to the community's sense of place;</li> <li>the place reflects the expansion and development of residential buildings on the city fringes during the rapid population increase of the 1890s gold boom and the early years of the twentieth century;</li> <li>the place collectively demonstrates the standard of residential accommodation built in the area during the late nineteenth and early twentieth century and the subsequent changes in ownership illustrate the social mobility of the Northbridge population as expansion of transport services enabled the more well-to-do members of society to move further afield to newly developed suburbs; and,</li> <li>the place is important for its role in providing low cost housing for residents in Northbridge.</li> </ul>

PLACE NAME	PROPERTY ADDRESS	STATE REGISTERED PLACE	MANAGEMENT CATEGORY	INHERIT PLACE NUMBER	STATEMENT OF SIGNIFICANCE
Brookman Moir Streets Group	Brookman Street and 2 - 28 Moir Street & 40 Forbes Road	✓	A	3992	<p>Brookman and Moir Streets Heritage Area is made up of two streets comprising 58 semi-detached residences and one detached residence. The prevailing architectural style is the Federation Queen Anne style, constructed of limestone and brick with corrugated-iron roofs in 1897-98, and a shop at the corner of Moir Street and Forbes Road built in 1940, has cultural heritage significance for the following reasons:</p> <ul style="list-style-type: none"> <li>• The historic precinct is an almost-complete example of two late 19th century streets of modestly-scaled residential buildings in the Federation Queen Anne style of architecture, built between 1897-98 in the wake of the rapid population expansion following the Western Australian gold boom;</li> <li>• The historic precinct is a substantial section of the residential estate developed by the Colonial Finance Corporation in 1897-1898. This estate, comprising the historic precinct in Brookman and Moir Streets, and Baker's Terrace in Lake Street, was the largest estate of its type developed in Western Australia;</li> <li>• The historic precinct is rare in Western Australia as two streets in which a single basic design was utilised for all the residences in a large estate, with the exception of Numbers 2 and 4 Brookman Street, which are grander variations of the same pattern used throughout the precinct, that is relatively intact;</li> <li>• The buildings contained within the precinct are representative of what was considered to be 'working class' rental accommodation from the late 19th and early 20th centuries;</li> <li>• The one-way thoroughfares and modest lot sizes of the semi-detached dwellings contained within the precinct give it a particular character and sense of enclosure;</li> <li>• The homogeneity of the modestly scaled, semi-detached residential buildings creates a visually striking precinct in an inner city residential area; and</li> <li>• The historic precinct was developed by the Colonial Finance Corporation who named Brookman and Moir Streets after two of the principal investors in the company who were prominent Western Australians.</li> </ul> <p>Generally, the present property fencing and most plantings are of little significance. Recent additions and modifications are of little significance, e.g. replacements of original details. Parking areas in the front of houses, and carports in the front setbacks, are intrusive. A small number of high masonry construction fences in the precinct are intrusive.</p>
House	6 Randell Street		B	8741	The house at No. 6 Randell St is a good example of a 1901 weatherboard Federation Queen Anne workers dwelling, built for John Good, of which few remain in the Town of Vincent.
Musbury Terrace	15-25 Ruth Street		B	8742	Musbury Terrace at No. 17-25 Ruth Street is a good example of an intact terrace in the Federation Italianate style, of which there are only a small number of extant examples in the state.
Loton Park Tennis Club Pavilion	310 Pier Street	✓	A	3536	<p>Loton Park Tennis Club, a single-storey, timber framed building with a verandah and a fibre reinforced cement shingle roof and its associated tennis courts, has cultural heritage significance for the following reasons:</p> <ul style="list-style-type: none"> <li>• the building has social value as an example of the manner in which recreational sport has become important to the Australian community;</li> <li>• the building has historic significance as one of the oldest clubhouses still in operation in Western Australia; the building and the tennis courts have aesthetic significance;</li> <li>• importance accrues to the building site as a marker of part of the former extensive property holdings of Sir William Thorley Loton, Register of Heritage Places - Permanent Entry Loton Park Tennis Club 2 07/10/1997 politician, merchant and landowner and for his association with the development of Loton's Paddock as Perth Oval and Loton Park; and,</li> <li>• the building demonstrates the development of recreational sport in Western Australia and is of interest as a modest yet representative pavilion typical of a suburban tennis club.</li> </ul>
Bulwer Park Flats	196 Bulwer Street		A	8595	Bulwer Park Flats is one of the earlier and more distinguished examples of Interwar flat building by Harold Krantz and Fred Hawkins. In the late Interwar period there was considerable interest in new forms of urban life as represented by residential flats. In the postwar period Harold Krantz, and later his son, became notable architect/developers of residential flats, financed by syndicates which they formed. Bulwer Flats are a good and representative example of the International Art Deco style, as practised in Perth.

PLACE NAME	PROPERTY ADDRESS	STATE REGISTERED PLACE	MANAGEMENT CATEGORY	INHERIT PLACE NUMBER	STATEMENT OF SIGNIFICANCE
Two Houses	214-216 Bulwer Street		B	18077	The two houses at 214 & 216 Bulwer Street are substantially intact examples of the late 1890s Federation Bungalow style, which complement each other. The houses have historic associations with the Reverend T Bird.
House	286 Bulwer Street		A	8598	The house at 286 Bulwer Street is a handsome exemplar of the Federation Italianate style, which has retained a high level of integrity, including rare and distinctive features.
Shop and House	296 Fitzgerald Street		B	8706	The place at No. 296 Fitzgerald Street is a representative example of an intact corner store in Federation Italianate style and Federation Bungalow style house, that makes a contribution to the streetscape and is a local landmark. Historically and socially it has been a focus of the area as a predominately retail outlet.
Four Houses	29-31, 33, 35 & 37 Wade Street		B	3409	The four workers houses at No. 31-37 Wade Street are an early group of handed Federation Bungalows which are similar in style, character and accommodation, that were consciously designed as a townscape group.
Shops	452-460 William St Perth	✓	A	3485	<p>Shops, 452-460 William Street, a two-storey terrace of five shops and dwellings constructed in the Federation Free Classical style in load bearing brick, with stucco decorative treatments and a corrugated iron skillion roof, has cultural heritage significance for the following reasons:</p> <ul style="list-style-type: none"> <li>the place is a significant landmark at the intersection of William and Brisbane Streets and is a recognised landmark at the northern entry to the commercial area of Northbridge;</li> <li>the place is a good and intact example of a two-storey terrace of shops and dwellings designed in an idiosyncratic rendering of the Federation Free Classical style and it is representative of a form of Shops, 452-460 William Street 2 12/11/2004 building where retailers lived over their premises, a practice once common in Western Australia during the late nineteenth and early twentieth centuries; and,</li> <li>the place was designed by well-known Architect Jack Ochiltree and built for Dr. Daniel Kenny, a very prominent doctor in Western Australia in the late nineteenth and early twentieth century and a renowned investor and speculator in real estate.</li> </ul> <p>The rear brick single leaf infilling and fibro cement balustrade cladding have little significance.</p>
Terrace House	4-10 Grant Street		B	3994	The terrace group at 4-10 Grant Street is one of the few single storey Federation Georgian style terraces remaining in Western Australia. The terraces were built for the owner, Mark Day, who occupied the largest unit. These modest places neighboured the Highgate Primary School and were very close to public transport. The terrace formed a similar function to the flats of the Interwar period. The terrace demonstrates a pattern of settlement no longer practiced.
Shop and attached house	133 - 135 Lake Street		B	18022	The shop and attached house at Nos. 133 - 135 Lake Street demonstrate the character and scale of late 1890's inner city development, when the Late Colonial Georgian models and styles were as prevalent as the Federation styles which came with the Gold Boom era.

PLACE NAME	PROPERTY ADDRESS	STATE REGISTERED PLACE	MANAGEMENT CATEGORY	INHERIT PLACE NUMBER	STATEMENT OF SIGNIFICANCE
Baker's Terrace	156-184 Lake Street	✓	A	1000	<p>Baker's Terrace, a row of fifteen double storey brick and iron terrace houses, has cultural heritage significance for the following reasons:</p> <ul style="list-style-type: none"> <li>it is the longest row of terrace housing in Western Australia; the place is a landmark in Lake Street, and the surrounding area, because of its imposing scale, classical detailing and lace-like facade;</li> <li>the place is a fine example of the Federation Filigree style of architecture, displaying the main features of the style;</li> <li>the place demonstrates the quality of accommodation constructed for investment purposes in Perth during the gold boom. The subsequent changes in occupancy and spatial arrangements demonstrate the evolving composition of Perth's inner city population after the Second World War; and,</li> <li>the place, together with the neighbouring row houses in Moir and Brookman Streets, forms a unique precinct of residential accommodation constructed by a single property investment company during the 1890s gold boom.</li> </ul>
Buddhist Temple	45 Money Street		B	8729	<p>Buddhist Temple, Chua Cha'nh - Gia'c, is an important place of worship for the Vietnamese Buddhist community. It is the headquarters for the Vietnamese Buddhist Association of Western Australia. Religious celebrations are conducted at the site every three months. It is one of the few Buddhist Temples located in Perth.</p>
Joseph Chester's Cottage	238 Beaufort Street		A	16174	<p>Joseph Chester's Cottage is rare, being one of the oldest surviving houses in the town. It was constructed in the style and pattern most prevalent for modest houses in the Late Colonial period. Joseph Chester was a radical figure of his day, promoting the role of working men in the Mechanics Institute. It also has associations with other prominent people.</p>
House	18 Stuart Street		B	18054	<p>The house at No. 18 Stuart Street is a fine example of a corner model of Federation Queen Anne bungalow which retains a high degree of integrity.</p>
House	25 Throssell Street		B	11448	<p>The house at No. 25 Throssell Street is a sophisticated and singular design in the Interwar Bungalow style, which is classical in spirit with a colonnaded 'temple'; set on a piano nobile, to address both street frontages.</p>
House	39 Knebworth Avenue		B	18020	<p>The house at No 39 Knebworth Avenue is a good example of the Late Colonial Georgian style and the survivor of three identical neighbouring houses.</p>
Hyde Park Flats	495 William Street		B	18071	<p>Hyde Park Flats are a good example of the Interwar Contemporary style, designed by notable flat designer Harold Krantz, based on the straightforward model of a symmetrical block of two storey walkup flats with a central entrance. Close to facilities and the tram route to central Perth, the northern end of William Street was a popular location for the development of flats during the Interwar period.</p>
Pair of terraced townhouses	2-4 Randell Street		B	18045	<p>The terraced townhouses at 2-4 Randall Street are sophisticated examples of their genre and were awarded the RAI (WA Chapter) Award for Multi Residential development in 1999. The townhouses demonstrate the contemporary lifestyle potential of inner city townhouses.</p>
Row of Shops	318-330 Bulwer Street		B	17977	<p>The retail strip at 318-330 Bulwer Street are a neighbourhood group of strip shops of the Federation Retail style, that complement the Hyde Park Hotel. Their tenancy history demonstrates the changing demography, needs and multiculturalism of the area.</p>
House	22 Myrtle Street		B	18041	<p>The house at No. 22 Myrtle Street is a rare surviving example of an intact weatherboard Convict &amp; Late Colonial Austerity cottage.</p>
Old Street Signs	114 Bulwer Street		B	18083	<p>The extant old street signs are enamelled artifacts which demonstrate the variety of colourways and typefaces used in the suburb's early street signage. Their significance is enhanced by remaining in location.</p>
Old Street Signs	2 Dangan Street Perth		B	18078	<p>The extant old street signs are enameled artifacts which demonstrate the variety of colourways and typefaces used in the suburb's early street signage. Their significance is enhanced by remaining in location.</p>
Federation Bungalow	109 Glendower Street		B	8713	<p>The subject dwelling at No. 109 Glendower Street is a fine example of the Federation Arts and Craft style and makes a significant contribution to the streetscape and character of the area.</p>
Single storey duplex (Menai)	193 - 195 Lake Street		B	18026	<p>The single storey duplex at Nos. 193 - 195 Lake Street constructed in the Federation Free Classical Style are a good example of their type and form part of the Brooking Park Estate, named after well known surveyor and developer J S Brooking, an active participant in the development of the suburb.</p>

PLACE NAME	PROPERTY ADDRESS	STATE REGISTERED PLACE	MANAGEMENT CATEGORY	INHERIT PLACE NUMBER	STATEMENT OF SIGNIFICANCE
House	82 Palmerston Street		A	27260	82 Palmerston Street, Perth, a single storey rendered brick and corrugated steel residence, designed in the Federation Queen Anne style of architecture has cultural heritage significance for the following reasons: <ul style="list-style-type: none"> <li>The place reflects the expansion and development of residential buildings close to the City during the rapid population expansion of the 1890s gold boom and the early twentieth century.</li> <li>The place has associations with Herbert Hocking, a well-known local businessman involved in Perth social welfare and benevolent activities.</li> </ul>
Rialto Terrace	34 Palmerston Street	✓	A	11741	The commercial building at 323 William Street is a notable example of the Interwar Art Deco style. It is one of a small number of Art Deco corner landmarks in Perth. It is historically significant for associations with the social venue called the Blue Room dance hall and the Midland Bus Company and use as a bus depot.
Four Semi-detached Dwellings	165-171 Brisbane Street		B	11434	Nos. 165-171 Brisbane Street is a group of 4 dwellings designed in the form and style of a Late Colonial Georgian house. This form of development is consistent with comparable examples elsewhere in town centres from development in the pre Gold Boom period. The form of this group of dwellings is one of the oldest residential forms still existing in the district.
Parry Street Precinct	89, 93, 99, 103, 107, 111, 135, 139-141, 143, 145, 147-149 Parry Street, 278-288 Pier Street	✓	A	11543	The Parry Street Precinct, a row of semi-attached and attached single storey brick residences of various styles, has cultural heritage significance for the following reasons: <ul style="list-style-type: none"> <li>the precinct is rare as an example of a relatively intact streetscape of late nineteenth century and early to mid-twentieth century buildings still extant the City of Perth;</li> <li>the place has significance as a cohesive streetscape of modestly and elaborately detailed residential buildings, encompassing a variety of architectural styles dating from the late nineteenth century and early to mid twentieth century;</li> <li>the precinct forms an integrated group of single storey residential buildings, which contribute, to the historic character of the area and to the community's sense of place;</li> <li>the place reflects the expansion and development of residential buildings on the city fringes during the rapid population increase of the 1890s gold boom and the early years of the twentieth century;</li> <li>the place collectively demonstrates the standard of residential accommodation built in the area during the late nineteenth and early twentieth century and the subsequent changes in ownership illustrate the social mobility of the Northbridge population as expansion of transport services enabled the more well-to-do members of society to move further afield to newly developed suburbs; and,</li> <li>the place is important for its role in providing low cost housing for residents in Northbridge.</li> </ul>
<b>WEST PERTH</b>					
Mayfair Flats	83 Carr Street		A	17982	Mayfair Flats are an exemplar of the Interwar Moderne style. This fine block is one of the most notable of the Interwar designs of the Architect W G Bennett, a leading modernist of the period and also responsible for the Regal Theatre, Subiaco and Plaza Arcade, Perth. It is a notable building within Carr Street and would have brought the shock of the new into the area when it was constructed.
Semi-detached dwellings	86-88 Cowle Street		B	17996	The places, at 86-88 Cowle Street, are a good and representative example of intact Federation Georgian bungalow style semi-detached dwellings. Set further from the street behind a narrow front garden they demonstrate the movement away from engaging the street as in the Late Colonial model at 70-70A.
House	27 Violet St		B	18065	The house at No 27 Violet street is the surviving one of a pair of identical Late Colonial Georgian houses. It is a fine example of its style and has been conserved by its owner.
Greek Orthodox Church of the Annunciation of Our Lady	121 and 129 Charles Street		A		The Greek Orthodox Church of the Annunciation of Our Lady is a major adaptation of an earlier large Anglican Church, that was purchased and extensively changed to suit the worship needs of the local Greek community. The current church demonstrates the contemporary requirements of the hierarchy of the Greek Orthodox Church, for a place of worship. The church houses an historic icon of the Annunciation of Our Lady, from which it takes its name. The church is well known and widely associated with the Greek community of Perth.



PLACE NAME	PROPERTY ADDRESS	STATE REGISTERED PLACE	MANAGEMENT CATEGORY	INHERIT PLACE NUMBER	STATEMENT OF SIGNIFICANCE
Charles St Methodist Mission Chapel & Methodist Church	113 Charles Street	✓	A	2237	<p>Charles Street Methodist Mission Chapel and Methodist Church, consisting of a timber framed, weatherboard and corrugated iron roofed chapel, and a limestone, brick quoined and zincalume roofed church, have cultural heritage significance for the following reasons:</p> <ul style="list-style-type: none"> <li>the place is important aesthetically for its landmark quality and as an important component of an historic precinct;</li> <li>the place has historic importance as it demonstrates the pattern of suburban evolution of the metropolitan area following the Gold Rush;</li> <li>the place had an important social value to the community and members of the Methodist Church for ninety-six years and, while not currently serving its intended use, the social value has continued for many who recall using these buildings for religious and social activities;</li> <li>as a sequential pair of a pre-gold rush timber chapel and a gold rush stone and brick church, the place has a high rarity value; and</li> <li>the individual buildings are representative examples of their architectural genre.</li> </ul>
House and Shop (fmr)	167-169 Fitzgerald Street		A	18000	<p>The shop and attached house constructed c1897 in the Late Colonial Georgian style have some historic value demonstrating the character and scale of late 1890s residential and commercial development constructed on the city fringes during the rapid population increase of the 1890s Gold Boom and the early years of the 20th Century. The place has some rarity value as an early surviving example of a corner store and attached house that has been in continuous use as a bakery, grocer, delicatessen and lunch bar from c1897 to 2006.</p>
Semi-detached and terraced dwellings	10-26 Harwood Place		B	18014	<p>The group of modest cottages at Nos. 10 - 26 Harwood Place is a large and cohesive group of relatively intact Federation Cottage style semi-detached pairs and terrace dwellings, built immediately prior to the commencement of the 20th century. The place was part of a new subdivision for workers housing in the inner city during the Gold Boom period.</p>
House	121 Charles Street		A	17983	<p>The fine, large residence, at 125 Charles Street, is rare and an exemplar of a Federation Beaux Arts bungalow. It demonstrates the confidence of the early developers in the future of this area with its raised topography and views to central Perth, Parliament House and Kings Park. The place has social significance for its associations with the Wholley family, the Anglican Church and the Greek Orthodox community.</p>
'Purtell's Buildings' Commercial Building	380-388 Newcastle Street		A	8732	<p>The place at Nos. 380 - 388 Newcastle Street has some aesthetic value as a row of shops with associated first floor residential component in the Federation Free Classical style of architecture, which has retained much of external detailing including the distinctive verandah, parapet and glazed shopfronts. The place has some aesthetic value through its contribution to the corner of Newcastle Street and Fitzgerald Streets in West Perth. The place has some historic significance as it demonstrates the important phase of development as it was constructed during the Gold Boom in Western Australia. The place has some social value. It contributes in to the community's sense of place as a distinctive and well known landmark at the Newcastle Street and Fitzgerald Street intersection in West Perth and as the various businesses that occupied the place, provided a range of services to the community through much of the twentieth century. Such businesses included: a pizza shop, a green grocer, fish and chip shop, a laundry, a costumiers shop, a butcher and boot maker</p>
Row of Shops	452 - 458 Newcastle Street		A	25180	<p>Corner Shops, 452-458 Newcastle St, West Perth is a decorative example of a single storey Federation Free Classical style commercial property. It is representative of the development of inner-city Perth in the Gold Boom, and particularly the establishment of facilities to serve the local population.</p>
Florence Hummerston Lodge	67 Cleaver Street		A	17990	<p>Florence Hummerston Lodge at 67 Cleaver Street has considerable social significance because of its associations with the Prowse, Veryard and Tormey families and more latterly Florence Hummerston and its subsequent conversion to community purposes. The residence is a fine and noteworthy example of the Federation Queen Anne style and demonstrates the kind of residence constructed for a manager of a commercial insurance firm in early twentieth century Perth. It is not dissimilar in character to the notable Duffel residence, designed by Hine and Selby, opposite the Subiaco Memorial Clock Tower.</p>

PLACE NAME	PROPERTY ADDRESS	STATE REGISTERED PLACE	MANAGEMENT CATEGORY	INHERIT PLACE NUMBER	STATEMENT OF SIGNIFICANCE
Newcastle Street Government School	480 Newcastle St	✓	A	2241	<p>Newcastle Street School, a pair of buildings designed in the Federation Arts and Crafts style, comprising a single storey limestone, brick and tiled former infants school with a part basement and a two storey former primary school constructed in the same materials also with a partial basement, has cultural heritage significance for the following reasons:</p> <ul style="list-style-type: none"> <li>it is significant in the development of educational facilities and the design of school buildings from 1890, and constitutes an important part of the history of the area and of education in the State;</li> <li>its buildings are well resolved examples of Federation Arts and Crafts style architecture in limestone and brickwork, with imposing hipped and gabled tiled roofs and are representative of the Public Works Department's use of the style;</li> <li>it is an important component of an historic cultural environment, providing evidence of the evolution of education through its continued usage for education purposes through time;</li> <li>it is an imposing structure of significant proportions and has a landmark quality; and it was designed by PWD Architects Charles Rosenthal, and Hillson Beasley, both of whom were significant architects in the history of the State.</li> </ul> <p>The grounds, surrounding fences, plantings, and street furniture have little significance.</p>
House	348 Bulwer Street		B	No ID	The subject dwelling is a good example of a Federation Arts and Craft Bungalow.
Cottages	5-11 Cowle St West Perth		B	17992	The houses at Nos. 7, 9 and 13 & 15 Cowle Street demonstrate the rapidity of changing forms and styles of inner city workers housing during the transition from Late Colonial to the Federation Period
Semi-detached pair of houses	17-19 Cowle Street		B	8703	The place has some aesthetic value as a fine example of a two storey terraces constructed in the Federation Filigree style. The place has some rarity value as a semi-detached two storey terraces constructed in the Federation Filigree style of which there are few examples remaining within the Town of Vincent.
Semi-detached mirror dwellings	28-32 Cowle Street		A	17993	The place has considerable aesthetic value as a good example of the Convict and Late Colonial Georgian styles. The place has considerable historic value as a good example of one of the earliest worker's dwellings built in the area prior to the Gold Boom period
Single brick and iron dwelling	54 Cowle Street		B	17994	The place has some historic value as one of the few surviving dwellings within the Town of Vincent which dated from 1884 prior to the Gold Boom Period of development; The place has some rarity value as it one of the few remaining dwellings built in 1884 located in the Town of Vincent; The Place has a high degree of integrity, retaining its original use as a residence.
Mick Michael Reserve	413 Bulwer Street		B	17978	Mick Michael Reserve commemorates the achievements of one of the districts best known immigrants, who became Lord Mayor of Perth in the mid 1980s. The Royal Park Bowling Club was a notable social institution in the district for several generations. Its fine Post War Functionalist building has been sympathetically adapted for community purposes, complemented by the conversion of the bowling greens into a community park.
House	14 Florence Street		B	18002	The house at No. 14 Florence Street is a distinctive example of a Federation bungalow, which has undergone some later, comparatively superficial, modification.
Semi-detached and terraced dwellings	10-26 Harwood Place		B	18014	The group of modest cottages at Nos. 10 - 26 Harwood Place is a large and cohesive group of relatively intact Federation Cottage style semi-detached pairs and terrace dwellings, built immediately prior to the commencement of the 20th century. The place was part of a new subdivision for workers housing in the inner city during the Gold Boom period.
House	121 Charles Street		A	17983	The fine, large residence, at 125 Charles Street, is rare and an exemplar of a Federation Beaux Arts bungalow. It demonstrates the confidence of the early developers in the future of this area with its raised topography and views to central Perth, Parliament House and Kings Park. The place has social significance for its associations with the Wholley family, the Anglican Church and the Greek Orthodox community.

## INTRODUCTION

The Central Perth Heritage Inventory (CPHI) comprises a list of heritage places that are of cultural heritage significance to both local and state communities. The places listed in the CPHI are supported by a ‘thematic history’, which identifies the history, stories and events that have shaped Central Perth and are represented in the built environment. The thematic history is important as it informs the assessment of significance of the places.

The CPHI was developed in accordance with the provisions of the *Heritage Act 2018*, which requires all Local Governments to compile an inventory of heritage places as the foundation of sound local heritage planning. Prior to normalisation in November 2020, the Metropolitan Redevelopment Authority (DevelopmentWA) were the determining authority for development within this Central Perth Redevelopment Area.

The CPHI applies as a Heritage List under Local Planning Scheme No.2, until such time the City’s Municipal Heritage Inventory is reviewed in accordance with the *Planning and Development Act (Local Planning Scheme) Regulations 2015*.

A summary of the cultural heritage significance is included in the following pages. Further detail on the cultural heritage significance for each place can be found on the place record forms within the [Central Perth Heritage Inventory](#).

### MANAGEMENT LEVEL

The Management Level for a place or precinct is related to its heritage value and will have significant influence on how the development of a place is to be managed (i.e. its ‘desired outcome’). The Management Level is as important as the list of places itself to ensure appropriate future management of all places listed on the CPHI. The management levels are outlined below.

#### HERITAGE PRECINCTS

The redevelopment area contains a number of heritage precincts of both State and local significance. These are defined “groups of places that exhibit special qualities, and will generally be rare within a locality”. The levels of significance for heritage precincts employed in the CPHI are identified in Table 1.

#### HERITAGE PLACES

The management levels of heritage places employed in the CPHI are identified in Table 2.

MANAGEMENT LEVEL	DESIRED OUTCOME
Historic Precinct of State Significance	<p>A grouping of places that collectively form or contribute to a historic precinct of State Significance. Protection will be afforded to the precinct by requiring development of contributing places (all heritage places within the heritage precinct) to have regard to the significance of the Precinct.</p> <p>All development applications for properties in a State Registered Precinct must be referred to the HCWA.</p>
Historic Precinct of Local Significance	<p>A grouping of places that collectively form or contribute to a historic precinct of local significance. Protection will be afforded to the Precinct by requiring development of contributing places to have regard to the significance of the Precinct.</p>

**Table 1: Management Levels for Heritage Precincts**

MANAGEMENT LEVEL	DESCRIPTION	DESIRED OUTCOME
Level 1	Place of State Significance	<p>These places are included in the State Register of Heritage Places and will be afforded the highest level of protection both through the provisions of the <i>Heritage Act 2018</i>, Local Planning Scheme No.2 (LPS2) and the Heritage Development Policy and LPP7.6.1. All development applications for properties on the State Register must be referred to the HCWA. Applications are to include a full heritage assessment and impact statement.</p>
Level 2	Place of Local Significance	<p>These places are of local significance in their own right and will be afforded a high level of protection through the provisions of LPS2, the Heritage Development Policy and LPP7.6.1. Applications are to include a heritage impact statement.</p>
Level 3	Place of Lesser Significance	<p>Conservation of these places is highly desirable through adaptive reuse, however proposed partial or full demolition is to be assessed on a case by case basis at the Development Application stage in accordance with the of LPS2, the Heritage Development Policy and LPP7.6.1. Applications are to include a heritage assessment impact statement.</p> <p>Photographic records and interpretation should be included in any redevelopment of the site.</p>
Level 4	Historic Site	<p>These places are historic sites with few or no built features and should be retained as a record in the Inventory for archival purposes. Their significant should be recognised through interpretation in any redevelopment of the site</p>

**Table 2: Management Levels for Heritage Places**

PLACE NAME	PROPERTY ADDRESS	MANAGEMENT LEVEL	STATE REGISTERED PLACE	INHERIT PLACE NUMBER	STATEMENT OF SIGNIFICANCE
Money Street Heritage Precinct	1, 3, 5 & 7 Money Street	Historic Precinct of Local Significance		18037	<p>Aesthetic Value: Collectively, these cottages are examples of modest Federation Queen Anne dwellings which form a relatively intact group of late nineteenth century housing.</p> <p>Historic Value: These places reflect the expansion and development of residential properties on the city fringes during the rapid population increase of the 1890's gold boom. The occupancy of the places reflects the waves of migration that have occurred in Western Australia during the twentieth century</p>
Beaufort Street, Lindsay Street and Money Street Heritage Precinct	Beaufort Street, Money Street and Lindsay Street between Little Parry Street and Newcastle Street	Historic Precinct of Local Significance		11263	<p>The place has interest in providing streetscapes with important examples of a substantial Victorian Georgian style Mill, an Art Deco style factory building, a Federation Free Classical style commercial building, Federation Queen Anne style residential buildings, and substantial stables, dating from the late nineteenth to the early twentieth century, and from the mid-twentieth century. The place comprises groups of industrial, commercial and residential buildings and contributes to the historic character of the area.</p> <p>Historic Value: The place reflects the expansion and development of residential and commercial buildings on the city fringes during the rapid population increase of the 1890's gold boom and the early years of the twentieth century. The place demonstrates the characteristics of a type of industry (flour mill/bakery) - important in the economic development of the State- found in the early part of the twentieth century, with ancillary buildings. Buildings within the Precinct are associated with people prominent in Western Australian commercial and industrial activities</p> <p>Social Value: The groupings of industrial, commercial and residential buildings form streetscapes that contribute to the community's sense of place.</p> <p>The place contains landmark buildings, prominent in Northbridge from 1894.</p> <p>Rarity: The place is rare in containing examples of a late nineteenth or early twentieth century industrial building and a 1940's Art Deco style factory building still extant within close proximity to the Perth City centre. The place is rare as in providing an example of a late nineteenth and early twentieth century complex of industrial, commercial and residential buildings still extant within close proximity to the Perth City centre.</p> <p>The place is rare in the study area in providing examples of substantial industrial and commercial buildings set within a mixed residential and commercial street setting.</p>
House	188 Newcastle Street, Perth	Level 2 – Place of Local Significance		No ID	<p>Aesthetic Value: The place is a good example of Federation Queen Anne style residence with-resolved Victorian Rustic Gothic style detailing.</p> <p>Historic Value: The place reflects the expansion and development of residential properties on the city fringes during the rapid population increase of the 1890's gold boom.</p> <p>The place is a surviving example of the boarding houses that were once prevalent in the City of Perth, providing an income for the mostly widowed women who ran them and low-cost housing for single men.</p>
House	186 Newcastle Street	Level 3 – Place of Lesser Significance		No ID	<p>Aesthetic Value: The place is an example of a modest Federation era dwelling which was modified to reflect the immigrant aesthetic of the 1950's.</p> <p>Historic Value: The place reflects the expansion and development of residential properties on the city fringes during the rapid population increase of the 1890's gold boom.</p> <p>The occupancy of the place reflects the waves of migration that have occurred in Western Australia during the twentieth century</p>
House	172 Newcastle Street, Perth	Level 3 – Place of Lesser Significance		No ID	<p>Aesthetic Value: The place has interest as a modestly detailed Federation bungalow style of residential building.</p> <p>Historic Value: The place reflects the expansion and development of residential and commercial buildings on the city fringes during the rapid population increase of the 1890's gold boom and the early years of the twentieth century.</p> <p>Representativeness: The place is representative an example of a modest residential building dating from the late nineteenth and early twentieth century.</p>
House	164 Newcastle Street, Perth	Level 3 – Place of Lesser Significance		No ID	<p>Aesthetic Value: The place has interest as a modestly detailed Federation Bungalow style of residential building.</p> <p>Historic Value; The place reflects the expansion and development of residential and commercial buildings on the city fringes during the rapid population increase of the 1890's gold boom and the early years of the twentieth century.</p> <p>Representativeness: The place is representative as an example of a modest residential building dating from the late nineteenth and early twentieth century</p>

PLACE NAME	PROPERTY ADDRESS	MANAGEMENT LEVEL	STATE REGISTERED PLACE	INHERIT PLACE NUMBER	STATEMENT OF SIGNIFICANCE
House	158-160 Newcastle Street, Perth	Level 3 – Place of Lesser Significance		No ID	Aesthetic Value: The place has interest as a modestly detailed Federation Bungalow style of residential building. Historic Value: The place reflects the expansion and development of residential and commercial buildings on the city fringes during the rapid population increase of the 1890's gold boom and the early years of the twentieth century. Representativeness: The place is representative as an example of a modest residential building dating from the late nineteenth and early twentieth century.
House	1 Money Street, Perth	Level 3 – Place of Lesser Significance Category B		No ID	Aesthetic Value: The place is an example of a modest Federation Queen Anne dwelling which along with the adjacent mirror pair at No. 3 and the pair at No's. 5 and 7 form a relatively intact group of late nineteenth century housing. Historic Value: The place reflects the expansion and development of residential properties on the city fringes during the rapid population increase of the 1890's gold boom. The occupancy of the place reflects the waves of migration that have occurred in Western Australia during the twentieth century.
House	3 Money Street, Perth	Level 3 – Place of Lesser Significance Category B		No ID	Aesthetic Value: The place is an example of a modest Federation Queen Anne dwelling which along with the adjacent mirror pair at No. 1 and the pair at No's. 5 and 7 form a relatively intact group of late nineteenth century housing. Historic Value: The place reflects the expansion and development of residential properties on the city fringes during the rapid population increase of the 1890's gold boom. The occupancy of the place reflects the waves of migration that have occurred in Western Australia during the twentieth century.
House	5 Money Street, Perth	Level 3 – Place of Lesser Significance Category B		No ID	Aesthetic Value: The place is an example of a modest Federation era dwelling which along with the adjacent mirror pair at Lot 61 and the pair at Lots 63 and 64 forms a relatively intact group of late nineteenth century housing. Historic Value: The place reflects the expansion and development of residential properties on the city fringes during the rapid population increase of the 1890's gold boom. The occupancy of the place reflects the waves of migration that have occurred in Western Australia during the twentieth century.
House	6 Money Street, Perth	Level 3 – Place of Lesser Significance Category B		No ID	Aesthetic Value: The place has interest as a modestly detailed Federation Queen Anne style of residential building. The place forms part of a group of residential and commercial buildings and contributes to the historic character of the area. Historic Value: The place reflects the expansion and development of residential and commercial buildings on the city fringes during the rapid population increase of the 1890's gold boom and the early years of the twentieth century. Representativeness: The place is representative as an example of a modest residential building.
House	7 Money Street, Perth	Level 3 – Place of Lesser Significance Category B		No ID	Aesthetic Value: The place is an example of a modest Federation era dwelling which along with the adjacent mirror pair at Lot 61 and the pair at Lots 63 and 64 form a relatively intact group of late nineteenth century housing. Historic Value: The place reflects the expansion and development of residential properties on the city fringes during the rapid population increase of the 1890's gold boom. The occupancy of the place reflects the waves of migration that have occurred in Western Australia during the twentieth century.
Mackay's Aerated Waters Factory (fmr)	14 Money Street, Perth and 19 Lindsay Street, Perth	Level 1 – Place of State Significance (individual) Category A	✓	08728	Aesthetic Value: The place has interest as a modestly detailed Art Deco style of commercial building. The place forms an integral part of a group of residential and commercial buildings and contributes to the historic character of the area. Historic Value: The place reflects the expansion and development of residential and commercial buildings on the city fringes during the rapid population increase of the 1890's gold boom and the early years of the twentieth century. Social Value: The large former factory forms part of a streetscape that contributes to the community's sense of place. Rarity: The place is rare as an example of an Art Deco factory building still extant with in close proximity to Perth City centre. The place is rare in the study areas as an example of an Art Deco factory building set within a mixed residential and commercial streetscape. Representativeness: The place is representative as an example of a substantial commercial building dating from the 1940's.

PLACE NAME	PROPERTY ADDRESS	MANAGEMENT LEVEL	STATE REGISTERED PLACE	INHERIT PLACE NUMBER	STATEMENT OF SIGNIFICANCE
Lindsay Street Flour Mill & Bakery Complex	12 & 22 Lindsay Street	Level 1 – Place of State Significance (individual)	✓	996	<p>Lindsay Street Flour Mill and Bakery Complex, a three-storey former flour mill and bakery (1894+), with ancillary buildings, a single-storey shop (1894), and a single-storey house in the Federation Bungalow style (1900-04) has cultural heritage significance for the following reasons:</p> <ul style="list-style-type: none"> <li>the place demonstrates the characteristics of a three-storey flour mill of the early 20th century, with ancillary buildings, and is the only mill of its size constructed in the period prior to World War I extant in the Central District of Perth;</li> <li>the place provides evidence of its humble beginnings as a bakery and mill and its subsequent development to become one of the four largest bakeries in Perth in the 1950s, and a substantial producer of flour through the associated company, Aero Lindsay Street Flour Mill;</li> <li>the place was the location of the business and residence of H. C. Moore and his family, between 1894 and 1959 and is associated with the family until its disposal to the Metropolitan Regional Planning Authority in 1980;</li> <li>the place differed from other baking and milling operations in the extent of the milling operation, and in its expansion into making flours for retail consumption, making it unique in Western Australia; the place has rarity value as an extant example of an inner-city industrial complex, dating from the early twentieth century. The place also has rarity value for the construction method of the first floor with its square steel tile finish; and,</li> <li>the place has been a landmark building in Northbridge since 1894.</li> </ul> <p>The lightweight perimeter fencing, car park surface, and light framed outbuildings on the north-east boundary are of little significance. The shed on the south-east corner of the house is intrusive.</p>
House	13-15 Lindsay Street, Perth	Level 3 – Place of Lesser Significance (individual)		No ID	<p>Aesthetic Value: The place has interest as a modestly detailed Federation Queen Anne style of residential building. The place forms an integral part of a group of residential buildings and contributes to the historic character of the area.</p> <p>Historic Value: The place reflects the expansion and development of residential and commercial buildings on the city fringes during the rapid population increase of the 1890's gold boom and the early years of the twentieth century.</p> <p>Representativeness: The place is representative as an example of a modest residential building dating from the late nineteenth and early twentieth century.</p>
House	5 Lindsay Street, Perth	Level 2 – Place of Local Significance		No ID	<p>Aesthetic Value: The place has interest as a modestly detailed Federation Queen Anne style of residential building. The place forms an integral part of a group of residential and commercial buildings and contributes to the historic character of the area.</p> <p>Historic Value: The place reflects the expansion and development of residential and commercial buildings on the city fringes during the rapid population increase of 1890's gold boom and the early years of the twentieth century.</p> <p>Representativeness: The place is representative as an example of a modest residential building dating from the late nineteenth and early twentieth century.</p>
Two dwellings	7-9 Lindsay Street, Perth	Level 2 – Place of Local Significance		No ID	<p>Aesthetic Value: The place has interest as a modestly detailed Federation Queen Anne style of residential building. The place forms part of a group of residential and commercial buildings and contributes to the historic character of the area.</p> <p>Historic Value: The place reflects the expansion and development of residential and commercial buildings on the city fringes during the rapid population increase of 1890's gold boom and the early years of the twentieth century.</p> <p>Representativeness: The place is representative as an example of a modest residential building dating from the late nineteenth and early twentieth century.</p>
House	189 Beaufort Street, Perth	Level 3 – Place of Lesser Significance		No ID	<p>Aesthetic Value: The place has interest as a modestly detailed residence from the period. The place forms part of a group of residential and commercial buildings and contributes to the historic character of the area.</p> <p>Historic Value: The place reflects the expansion and development of residential and commercial buildings on the city fringes during the rapid population increase of the 1890's gold boom and the early years of the twentieth century. The place represents the changing character of the local community from the typically heterogeneous population of the gold boom of the 1890's to the increasing concentration of ethnic minorities in the course of the twentieth century.</p> <p>Representativeness: The place is representative as an example of a residential building dating from the late nineteenth and early twentieth century.</p>

PLACE NAME	PROPERTY ADDRESS	MANAGEMENT LEVEL	STATE REGISTERED PLACE	INHERIT PLACE NUMBER	STATEMENT OF SIGNIFICANCE
House	191 Beaufort Street, Perth	Level 3 – Place of Lesser Significance		No ID	<p><b>Aesthetic Value:</b> The place forms part of a group of residential and commercial buildings and contributes to the historic character of the area.</p> <p><b>Historic Value:</b> The place reflects the expansion and development of residential and commercial buildings on the city fringes during the rapid population increase of the 1890's gold boom and the early years of the twentieth century. The place represents the changing character of the city fringe of Perth as expansion of transport services enabled the more well-to-do members of society to move further afield to newly developed suburbs. This place represents the changing character of the local community from the typically heterogeneous population of the gold boom of the 1890's to the increasing concentration of ethnic minorities in the course of the twentieth century.</p> <p><b>Representativeness:</b> The place is representative as an example of a residential building dating from the late nineteenth and early twentieth century.</p>
Lung Cheong Chinese Laundry (fmr)	193 Beaufort Street, Perth	Level 2 – Place of Local Significance		15786	<p><b>Aesthetic Value:</b> The place has interest as a fine example of a Federation Free Classical style of commercial buildings. The place is a local landmark. The place forms part of a small group of residential and commercial buildings and contributes to the historic character of the area.</p> <p><b>Historic Value:</b> The place reflects the expansion and development of residential and commercial buildings on the city fringes during the rapid population increase of 1890's gold boom and the early years of the twentieth century. The place represents the changing character of the local community from the typically heterogeneous population of the gold boom of the 1890's to the increasing concentration of ethnic minorities in the course of the twentieth century,</p> <p><b>Social Value:</b> The place is valued by the local community.</p> <p><b>Representativeness:</b> The place is representative as an example of a commercial building dating from the late nineteenth century.</p> <p>A change of use to 'live music venue' in 2009 involved the adaptive reuse of the site which does not maintain the original mixed use function of the building, however the heritage significance of the building has been retained through refurbishment works which respect the original fabric</p>



CITY OF VINCENT

**Administration Building**

**A:** 244 Vincent Street, Leederville WA 6007

**T:** 08 9273 6000

**E:** [mail@vincent.wa.gov.au](mailto:mail@vincent.wa.gov.au)

**W:** [vincent.wa.gov.au](http://vincent.wa.gov.au)



@cityofvincent