

**5.8 MOUNT HAWTHORN YOUTH SKATE SPACE**

- Attachments:**
1. **Mount Hawthorn Youth Skate Space - Preliminary Consultation Summary**
  2. **Mount Hawthorn Youth Skate Space - draft Concept Plan**
  3. **Mount Hawthorn Youth Skate Space - Concept Perspectives**

**RECOMMENDATION:****That Council:**

1. **NOTES the submissions received during the preliminary consultation period and Administration's responses, included as Attachment 1; and**
2. **APPROVES the draft Mount Hawthorn Youth Skate Space Concept Plan, included as Attachment 2 to be advertised for community consultation in accordance with the City's Community and Stakeholder Engagement Policy.**

**PURPOSE OF REPORT:**

To seek Council approval of the draft Mount Hawthorn Youth Skate Space Concept Plan (Concept Plan) for the purpose of community consultation.

**BACKGROUND:**

In August 2020, John Carey MLA started a 'community conversation' on Facebook and conducted a community survey to obtain feedback on potential skate and scooter facilities in either Mount Hawthorn or North Perth. 207 respondents participated including 113 (54.59 percent) from Mount Hawthorn, 60 (28.99 percent) from North Perth, 18 (8.7 percent) from Leederville and the remaining 16 (7.72 percent) were from surrounding suburbs.

The survey findings indicated strong support for a youth skate space in or around the suburb of Mount Hawthorn. The findings indicated there was a gap of skate facilities in this area, while also acknowledging the proximity to the Leederville Skate Park. Survey respondents highlighted the potential for a Mount Hawthorn skate facility to complement the Leederville Skate Park through the provision of smaller facilities suited to entry level skaters.

~~Following the results of the State Election in 2021, the City submitted a funding application for \$200,000, made as a part of the State Government Election Commitment 2020/21 Grants Package to "fund community-based initiatives which will deliver positive outcomes for vulnerable and at-risk people in Western Australia." The City's application was successful, and the total \$200,000 grant funding amount has since been received.~~

During the State Election in 2021, an election commitment of \$200,000 was announced for a new skate/scooter park in Mount Hawthorn. Following the results of the State Election, the City submitted a funding application for the \$200,000, made as a part of the State Government Election Commitment to "Create a new skate facility for the children in Mount Hawthorn and surrounding suburbs." The City's application was successful, and the total \$200,000 election commitment funding amount has since been received.

In July 2021, the Mount Hawthorn Skate Working Group (Working Group) was established to collaborate and progress the planning of the Mount Hawthorn Youth Skate Space (skate space) project. The Working Group consists of Council Members, representatives from Administration and key stakeholders representing the Mount Hawthorn youth and the local skate community.

**DETAILS:**

On 14 September 2021, the Working Group conducted a site analysis of Axford Park, Britannia Reserve and Charles Veryard Reserve. The site selection criteria for consideration included physical site conditions, access and transport, natural surveillance and security, proximity to amenities, impact on existing facilities and users, distance from housing and maintenance of the space.

The site analysis concluded that Britannia Reserve was the preferred site. The Working Group reviewed a number of different locations within Britannia Reserve and determined that the proposed site adjacent to the pump track would allow for the best design outcome and maximise user benefit to the local community, due to its sizeable area and ability to co-locate with amenities that cater towards a similar user demographic.

#### Preliminary Consultation

The preliminary community consultation was conducted from 22 July to 3 August 2022, 140 survey responses were received during this period.

A summary of submissions is included at **Attachment 1**. The report details the comments received in relation to the proposed location of the skate space, and initial design considerations to inform the draft Concept Plan.

Responses via the survey were supportive (78.6 percent) for the proposed skate space location at Britannia Reserve. The comments included suggestions or considerations to achieve the best outcome for current reserve users and prospective users of the skate space. Supportive comments related to the location and provided design considerations, including natural greening and shade structures, adequate separation from the active pathway and integrating the skate space into the existing landscape. Supportive comments also related to the skate space complementing current usage at Britannia Reserve, its co-location with the pump track and being a suitable distance from residential housing while retaining clear site lines.

The non-supportive responses (21.4 percent) for the proposed location at Britannia Reserve were generally either not supportive of a skate space due to perceived increase in anti-social behaviour, increases in conflicts along the adjoining active pathway, not wanting skate related infrastructure at the reserve, or preferring a skate space in another Vincent location. These concerns have been addressed where possible through the draft Concept Plan.

#### Draft Concept Plan

The draft Concept Plan as included in **Attachment 2**, has been designed to complement the existing amenities at Britannia Reserve and includes the most favourable skate elements submitted from the consultation. The 'bowl' was the only favourable element that was not included, as it was deemed not suitable for this scale of skate space, ensuring this space achieves its intent to be small scale and inviting to young children and entry-level skaters. The skate space footprint, orientation and landscaping in the draft Concept Plan has been designed to consider varying respondent's comments in addition to specific skateable design features.

The skate space and elements have been designed to cater towards younger children and entry-level skaters, with all elements being under 1m high from the current surface level. With skate elements being of this smaller scale, it will also assist with integrating the skate space into the existing landscape. Additional planting and turf banks will create this integration.

The draft Concept Plan includes 'earthy tone' coloured concrete to also complement the existing landscape, as well as being a cost effective colour choice. The draft Concept Plan Perspectives as included in **Attachment 3**, show a number of differing viewing perspectives that were noted by consultation respondents.

The draft Concept Plan presents a skate space that would be approximately 350sqm. This is deemed appropriate for young children to safely use and includes amenities such as shade structures and seating to allow parents and families to comfortably spend more time at the location, which was a feature frequently referenced in the consultation responses.

The skate space has been designed to enable a suitable buffer zone through planting and greenspace to clearly separate the skate space and the reserve, adjoining active pathway, and sporting grounds to limit impacting current user activities such as sporting and dog walking. The use of logs will also provide additional seating and serve as buffers from the nature trail and pump track, to reduce unexpected drop-ins from BMX and mountain bike riders.

Active lighting of the skate space was considered by the Working Group however was not included in the draft Concept Plan due to its intent to accommodate younger children that would not be using the skate space after dark.

The draft Concept Plan has been designed to allow for effective drainage with consideration for ongoing maintenance. The City's Parks team have indicated that this space would be blown down twice weekly, opposed to other locations that would require daily sweeping due to the close proximity to overhanging trees.

**CONSULTATION/ADVERTISING:**

If approved for advertising, community consultation will be undertaken in accordance with the City's Community and Stakeholder Engagement Policy. Community consultation is a key element to ensure the skate space, supporting infrastructure and surrounding landscaping appropriately reflect the community's feedback. The community consultation will occur through October and November 2022.

**LEGAL/POLICY:**

Nil.

**RISK MANAGEMENT IMPLICATIONS**

Low: It is low risk for Council to approve the draft Concept Plan for community consultation.

**STRATEGIC IMPLICATIONS:**

This is in keeping with the City's *Strategic Community Plan 2018-2028*:

Enhanced Environment

*Our parks and reserves are maintained, enhanced and well utilised.*

Connected Community

*We have enhanced opportunities for our community to build relationships and connections with each other and the City.*

*Our community facilities and spaces are well known and well used.*

Thriving Places

*Our physical assets are efficiently and effectively managed and maintained.*

Innovative and Accountable

*Our community is aware of what we are doing and how we are meeting our goals.*

*We are open and accountable to an engaged community.*

**SUSTAINABILITY IMPLICATIONS:**

This does not contribute to any environmental sustainability outcomes. This action/activity is environmentally neutral.

**PUBLIC HEALTH IMPLICATIONS:**

This is in keeping with the following priority health outcomes of the City's *Public Health Plan 2020-2025*:

*Increased mental health and wellbeing*

*Increased physical activity*

**FINANCIAL/BUDGET IMPLICATIONS:**

The Concept Plan has been designed to the construction budget of \$200,000, which is the amount of funding received by the State Government. The funding agreement term is due to expire 30 June 2023.

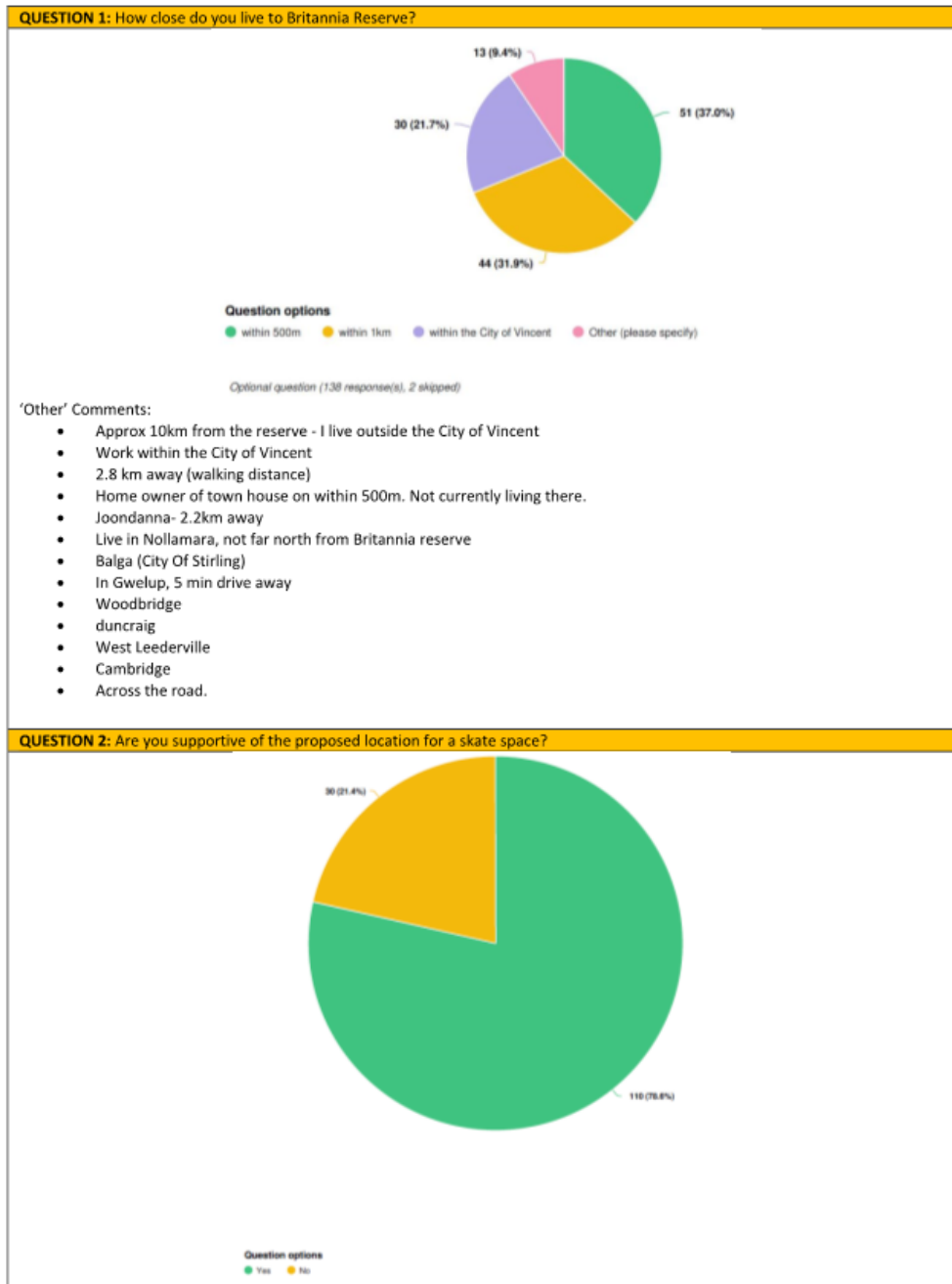
To develop the draft Concept Plan and consultation with the community on this, \$30,000 was included in the City's 2022/23 annual budget.

**COMMENTS:**

Britannia Reserve is an active recreational hub that services the immediate Mount Hawthorn area, wider Vincent and neighbouring inner-city catchments. Classified as Regional Open Space in the City's Public Open Space Strategy it has the description to "*serve one or more geographical or social regions and is likely to attract visitors from outside any one local government area.*"

The survey results from the preliminary consultation suggest strong support for a small-scale skate facility in the proposed area of Britannia Reserve with the appropriate design considerations. The Mount Hawthorn Skate Working Group are supportive of the Concept Plan and are confident this will complement the existing Britannia Reserve pump track, mountain bike trails and sporting facilities, while not compromising the existing users such as sport and dog walkers.

### Mount Hawthorn Youth Skate Space – Preliminary Consultation Summary



QUESTION 3: Do you have any comments on the proposed location of a skate space?	
Submitter Comments Verbatim	Administration Comments
Cambridge have just built a skate park on the eastern side of Lake Monger, so the proposed location at Britannia will mean two skate parks within spitting distance. It may be better to have the skate parks more spread out in the community	The Town of Cambridge recently opened their Lake Monger Pump Jump Track, however this is not the same facility. This proposed skate space will be designed towards younger children and entry-level skaters, and will enable them to develop their skills and eventually transition to the Leederville Skate Park and other more advanced skate parks.
think make more sense in north perth given closer skate park in Leederville already but also makes sense given the pump track	Noted.
Pleased it is a reasonable distance from residential areas to minimise noise disruption. Also pleased it is at a multi use park in terms of visiting not solely to use the skate facility but also the oval and playground.	Noted.
I would have put it further up from the proposed location, where the ramp down to car park is in front of the cricket oval	This area was considered, however would impact on the sporting grounds and be in the potential vicinity of cricket balls.
Ensure good lighting and security surveillance is in place, and it's included in city security drives	Design related submission noted for consideration.
Its a fantastic idea. Young people need places to go to be able to socialise, meet friends old and new, to be outdoors in the fresh air.	Noted.
Please note I am 100% for a skate park in Mount Hawthorn.	Noted.
Teenagers should be able to easily get to the skatepark by themselves. Locating it at Britannia means that it is not near any major thoroughfare or bus routes. Several roads on the north side of Britannia have not been resurfaced for a while and so are poor to ride on with skateboards and scooters that have hard wheels. There are also no local shops nearby where people can get drinks/snacks. In my opinion Axford would have been a much better location.	
Too hidden there, need to be closer to public space, Leederville skate park is only a 5 minute walk away, needs to be closer to the mezz and more visible	Noted.
It's a great location - I'm very excited to see this go ahead.	Noted.
What a fantastic location and addition to the Britannia Reserve precinct!	Noted.
I am largely in favour of a skatepark anywhere. However, there are already facilities in this space (pump track) and it is in relatively close proximity to the Leederville skatepark. I think somewhere closer to the heart of Mt Hawthorn would be preferable, such as Axford Park, Blackford St Park or Braithwaite.	The proposed location was preferred by the project Working Group to complement the existing amenities at the site. Also acknowledging the proximity to Leederville Skate Park, however will provide the opportunity for younger skaters with smaller scale skate elements compared to Leederville. Various parks around Mount Hawthorn and North Perth were identified, however Britannia Reserve was the preferable site to achieve the best design outcome and benefit to the community.
brilliant	Noted.
make sense to put it near the pump track. Will there be room to expand the skate park in the future?	There is no current scope to expand in future, however the proposed area would allow for the inclusion of future skate elements to be added.
Being near the pump track is great!	Noted.
Should be close to parking if possible	Site analysis was conducted with locations closer to the car park, however would impact the current sporting activities. The proposed site is still seen as within an appropriate distance to walk/ride/skate from the car park.
Britannia (and Mt Hawthorn in general) already have a lot of recent upgrades to facilities including the pump track and Braithwaite Park playground. North Perth has very little in terms of options for older children so I would prefer to see a skate/scooter park at Charles Veryard.	The funding was nominated to the Mount Hawthorn and North Perth areas respectively. Upon conducting site analysis, Charles Varyard needed further considerations to ensure a skate space would not impact the current sporting activities and dog exercise area, and was noted as a potential site in future.
This is too close to off lead dogs. Many dogs are reactive to skateboards and will chase and snap at the riders. Having the skate park in that location will also result in more skateboards on the bike paths around the park. This is dangerous and may result in serious accidents. If a skate park is located on Britannia oval many people will be unable to have their dogs on the park. I would be very sad if this proposal goes ahead.	The high frequency of dog walkers was acknowledged when considering the proposed location and accounting for the size of the reserve that these users could co-exist with an appropriate design. The skate space will be located as far as possible from the active path and sporting reserve, and will include natural buffering with trees, greenspace and logs.
It should not be near an aged care facility or in an area used by so many pedestrians and dog walkers	The high frequency of dog walkers and general users was acknowledged when considering the proposed location and accounting for the size of the reserve that these users could co-exist with an appropriate design. The skate space will be located as far as possible from the active path and sporting reserve, and will include natural buffering with trees, greenspace and logs.
As someone who works with youth through arts and education, I can confidently say that a very limited group of young people use skate parks. There is already one 2.5km at the YMCA. Instead of pulling out the stock standard, consult with the local youth about what they want or think is missing from the local area. If young people are involved in the creation, they are more likely to use the space and respect the space!	The initial survey conducted by John Carey MLA and the local town team (Mount Hawthorn Hub) received close to 200 submissions supporting a skate and scooter facility in the area. The project Working Group contains varying representation of schools, youth and the skate community have also advised of the support for a skate space that will target younger children and families in the local area.
Alternatively consider creating a nature playground for younger people.	The City have recently upgraded a number of nature playgrounds, and are always interested to hear from the community on what other facilities/amenities they would like to see in their local area.
It's a great idea for this space. Strongly support it.	Noted.
Restively close to the Leederville skate park but great to make use of the new lights. No residents close by so noise shouldn't be an issue. Close to me so I'm happy.	Noted.
Perfect location	Noted.
There are two skate parks within 2 km of Britannia Reserve. If the City must spend the grant on a skate park, it would be better built elsewhere. I would, however, prefer the funds were spent on something more inclusive to all age groups, or on improvements to existing facilities in the City. Although it is a bit remote from other facilities, it is part of a hub for biking, skating etc.	The funding objective from the State Government grant is to construct a youth facility that will be catering towards families and young skaters that will be addressing a need outlined by the community. The skate space design will also include considerations to enable any ability skater to use the skate space.
Would love to see similar pump track/jump line (for all ages) that is at Lake Monger but understand budget limitations. The location would compliment the existing pump track and nature trail, offering more choices for everyone.	Noted.
This would be an amazing addition to the pump track which we already use regularly. Fantastic to see facilities yo keep youth engaged in positive activities	Noted.
The location is isolated in the park, however may offer some reduction in noise disturbances for local residents if they were to perceive that as an issue.	Noted.
"This isn't a Yes/No question. It's a "YES" if the facility provides sufficient barriers, physical or otherwise, to protect kids and dogs. It's a "NO" if it results in dogs and kids having unsafe interactions.	The high frequency of dog walkers and general users was acknowledged when considering the proposed location and accounting for the size of the reserve that these users could co-exist with an appropriate design. The skate space will be located as far as possible from the active path and sporting reserve, and will include natural buffering with trees, greenspace and logs.
I am the admin on a page for dog walkers at Britannia Reserve. Mostly we reconnect people with things they've lost, and encourage each other to pick up dog poop.	
I'm in favour of community facilities for families, and am conscious I am part of a growing cohort of people who - for whatever reason - couldn't have kids. This means my dog is a family member.	
In the past year there has been at least one dog was seriously injured when a kid on a bike ran over it. I am sure you saw the commentary around this.	

<p>A facility with fast-moving skateboards and scooters - which even the most well-behaved dog might be spooked by - does in my view pose a risk to the many dog walkers who use Britannia often twice a day.</p> <p>Providing some sort of strategy is in place, this seems like a cool thing. I am sure there are smarter planning people than me at this type of challenge but I'd reckon maybe things like:</p> <ul style="list-style-type: none"> <li>- No food in or near the skate park</li> <li>- Surrounding the park with a barrier - the big logs seem like a decent solution</li> <li>- maybe some peak times to avoid for kids. Dog walkers are usually a 7am-9am and 5pm-6pm mob.</li> <li>- Age requirements to under 12s.</li> <li>- Adult supervision requirements</li> <li>- Clear rules to "not" skate down the footpath, but instead access via the pump track.</li> </ul>	<p>Design related submission noted for consideration.</p>
<p>I have been unable to walk safely around the path on the reserve since pump path put in. This is rarely used, but kids on bikes have ridden "open slather" on the foot path. God only knows how it will be with a skate park here. Presently they whiz along the path at break neck speed. Ignoring pedestrians. Seniors have been eradicated from the equation &amp; no attempt has been made to include us.</p>	<p>The active footpath is not in the project scope, however note this comment for reserve considerations and if regular conflicts emerge following its implementation then will look at measures to alleviate this.</p>
<p>It's a good location, Les Lilliman reserve would be better</p>	<p>Noted.</p>
<p>I do not want a skate park to be placed at Britannia Park. It would run the peaceful enjoyment and natural elements of the park. Leederville already has a skate park on Oxford Street.</p>	<p>Noted.</p>
<p>As a dog owner, my only concern would be to ensure adequate separation between dogs &amp; the skate park to keep both kids &amp; pets safe. The worst case scenario would be a dog falling into a skate bowl or a child being attacked by a larger dog that is triggered to "chase" a child on a skateboard. The current scenario with the tree trunks provides a good barrier for the bike track.</p> <p>I'd also be sad if this meant that the current "mini" jumps track was removed (I've even seen little kids bringing their remote control cars to use which is a gorgeous use of the space!)</p> <p>It would be a better use of area if there was tables &amp; chairs put there for people to have a coffee/brunch and a spot for food trucks to park - like the acai van that goes to Lake Monger or the food trucks in Mt Hawthorn/Floreat (could be a Bites at Britannia events over summer) - especially on weekends for those families watching sports.</p>	<p>This high frequency of dog walkers and general users was acknowledged when considering the proposed location and accounting for the size of the reserve that these users could co-exist with an appropriate design. The skate space will be located as far as possible from the active path and sporting reserve, and will include natural buffering with trees, greenspace and logs. Shade structure and appropriate seating will also be considered with the design.</p>
<p>I think the idea of using this space for youth amenity is great but not sure if a skatepark is the right thing as there is one in Leederville and Lake monger has good new bmx pump track. Maybe a 'ninjab' obstacle course for teenagers/ young adults would be better?</p>	<p>The skate space has been funded by the State Government to address community feedback towards the shortage of skateable infrastructure that caters to younger children. The City have recently upgraded a number of nature playgrounds, and are always interested to hear from the community on what other facilities/amenities they would like to see in their local area.</p>
<p>I am not in favour of this proposal. There is already a skate park in Leederville. A skate park is not consistent with the existing nature of the area. Even though there is already a jump park the introduction of scooter, skateboards and more bikes conflicts with other activities in particular elderly people walking and odd exercising. Many dogs get spooked by scooters and skate board which could lead to injuries to both dogs and users of the proposed facilities. I do not wish to see further reduction in vegetation. On the contrary there ought to be greater vegetation.</p>	<p>This high frequency of dog walkers and general users was acknowledged when considering the proposed location and accounting for the size of the reserve that these users could co-exist with an appropriate design. The skate space will be located as far as possible from the active path and sporting reserve, and will include natural buffering with trees, greenspace and logs. The skate park in Leederville caters to older and more advanced skaters, this skate space will cater towards younger children and entry-level skaters. The proposed location also contains limited vegetation and is used for the City to store mulch, and would look to increase the natural greenspace and trees surrounding the area.</p>
<p>The existing pathway around Britannia reserve will have increased traffic of skateboards and scooters. I don't see it as a problem as it is a logical extension of the placement of the skatepark. It could however potentially be a source of conflict with other users of the path.</p>	<p>The active footpath is not in the project scope, however note this comment for reserve considerations and if regular conflicts emerge following its implementation then will look at measures to alleviate this.</p>
<p>good location for siblings of other kids playing sports.</p>	<p>Noted.</p>
<p>No</p>	<p>Noted.</p>
<p>Not to replace the bmx place to keep bmx and skateboard separated</p>	<p>The proposed skate space location will not affect the pump track.</p>
<p>Closer toward existing carpark</p>	<p>Noted.</p>
<p>Yes. See responses through other questions.</p>	<p>Noted.</p>
<p>I think this will be great for the youth in the area</p>	<p>Noted.</p>
<p>I just pray it doesnt end up like the one in Leederville where I have seen drug dealings happen on several occasions</p>	<p>Noted.</p>
<p>It's quite isolated; skate parks are normally towards the edges of the reserve foot easier access.</p>	<p>Noted.</p>
<p>It would be a shame to lose the gravel small pump track for the younger kids. There are skate parks close by. The park is full of dogs &amp; kids, always. It feels a bit hectic.</p>	<p>The proposed skate space location will not affect the pump track.</p>
<p>Should happen as soon as possible</p>	<p>Noted.</p>
<p>Good idea</p>	<p>Noted.</p>
<p>I approve of Britannia as a location but believe it should be in an area that can be surveilled easily. The 'walk' to the current location is off putting for those who simply want to watch their kids scooter / skate and will be an impediment for some. I think having the area able to be readily and easily surveilled will encourage a mix of ages to attend, including adults, and in doing so will discourage antisocial behaviour. Where it's done right? Look at how the Perry Lakes skate park is situated, close so parents can 'park up' and be watching but also lovely and close to easily hop out and sit on lawn/seats right there. I understand it needs to be sufficiently away from homes due to noise issues so either the corner where basketball hoop (to be moved of course, not removed) near tennis courts or between back of Athena and the cricket club roomson MH side would allow easy access and room for a row of parking 'to face' the skate park for easy surveillance/attendance.</p>	<p>Families and parents already ride and walk with their young children to the pump track and mountain bike trail, and the intention to then co-locate the skate space would be to allow them to sit and watch/interact with them across the added infrastructure. The proposed location was deemed preferable based on the clear sightlines to the area from across the reserve and frequent use resulting in good passive surveillance.</p>
<p>Make this area for multiple age groups with a playground attached for families</p>	<p>Noted.</p>
<p>There is dog poo all over that oval. In the last few years it has become one giant toilet for dogs, particularly around the edge of the car park near the cricket club.</p>	<p>Noted.</p>
<p>Make it epic and suitable for children aged 3-17 years of age.</p>	<p>Noted.</p>
<p>Great idea for the kids and teenagers</p>	<p>Noted.</p>
<p>There is too little detail about the project - as usual eg., what age range will this cater too?</p>	<p>The skate space will be designed to cater primarily to young children and 'twens', however will be considerate to enable any age or ability of skater to use the facility.</p>
<p>What else is the City planning to force on to Britannia Reserve users? Enough is enough! The area is being completely ruined as a community space for all ages as users have to now compete for space. It is already too dangerous for the elderly users to walk on the paths because of e-scooters, skate boards, bikes, roller blades and even recently a trail bike cutting across the Reserve!</p>	<p>The design will include a natural buffer zone between the pump track and the proposed skate space location. It will also be designed to complement the current wheeled sport amenities, and be small-scale to suit similar user demographics.</p>
<p>How is the skate space going to work with toddlers on trikes on the pump track?</p>	<p>The proposed location was deemed preferable based on the clear sightlines to the area from across the reserve and frequent use resulting in good passive surveillance.</p>
<p>How will the anti-social behaviour in the space be managed by the City? Simply ignored as usual?</p>	<p>The proposed location was deemed preferable based on the clear sightlines to the area from across the reserve and frequent use resulting in good passive surveillance.</p>
<p>Don't make it as dangerous as the one at Lake Monger! Maybe have a separate area for little kids to use scooters safely.</p>	<p>The skate space will be designed to suit younger children and entry-level skaters, which will result in smaller scale skateable elements.</p>
<p>Britannia Park already consists of a huge green for kids to play on, two playgrounds as well as two pump tracks.</p>	<p>The intention of the proposed location, is to co-locate two small scale amenities together to create a 'youth hub' in this area of the reserve.</p>
<p>There are areas within mount hawthorn for primary school kids with no kid friendly areas whatsoever. Instead of filling up Britannia park maybe consider making the area between Brady street and Jagan Street more family and kid friendly.</p>	<p>Various parks/reserves around Mount Hawthorn and North Perth were identified, however Britannia Reserve was the preferable site to achieve the best outcome of facility and environment.</p>

Hopefully it won't reduce the pump track that's there	The proposed skate space location will not affect the pump track.
Its a good spot. Just need to ensure the safety of skaters and dogs with some sort of separation	Design related submission noted for consideration.
Create an accessible path for emergency vehicles, injuries can occur easily and quickly.	There is vehicle access to the reserve near the sports club room.
Brittania is already busy from people coming from other suburbs to use. also there are 2 other skate parks close by in Leederville and Cambridge. Many people from other areas of Vincent want a skate park close to them as there is nothing exists close to them it seems you are doing what is convenient for the council not in best interest of all residents	Noted.
Fence the whole place up	Design related submission noted for consideration.
Excellent addition to the Mt Hawthorn community :)	Noted.
I think it's a suitable space	Noted.
This space must be accessible for little kids as well as more advanced skaters.	Noted.
Should be readily accessible, close to transport and facilities, toilets / food / drink and not an isolated spot which could become a hazard at night.	Noted.
Good location as any.	Noted.
Makes total sense.	Noted.
Disappointed in the lack of outdoor spaces that welcome young girls. Let's face it, most pump tracks, skate parks have a majority male following.	Noted.
Looks like a great choice	Noted.
Sounds great	Noted.
Good location, as long as it doesn't take space away from the existing bike tracks	Noted.
Ensure enough lighting	Noted.
Great location with good existing facilities for bikes and families	Noted.
I think its a much needed facility for our City's young people. I would like to stress the need for shade though please, a great park with no reprieve from the searing sun is an under-utilised one. Also a drink fountain, more shade trees, and some bench seating close to the park area please. The current pump track we use once a week even in winter, and a couple of bench seats or picnic tables close by would improve the space for us poor parents :) Thank you, great initiative CoV.	Design related submission noted for consideration.
Yes, a court for roller hockey pls	Due to varying constraints, unfortunately this will not be possible for this project.
Make it indoor	Due to varying constraints, unfortunately this will not be possible for this project.
Concerned to close to junior bike area. Families sit and have lunch etc there. Skateboards can be annoyingly noisy	Design related submission noted for consideration.
There is a skate space at Leederville. How many do we need in leederville. Great location, not close to the street and far away enough from houses	The skate park in Leederville caters to older and more advanced skaters, this skate space will cater towards younger children and entry-level skaters, and location is more approachable for families to use it along with the other features in the reserve.
Yes a great use of unused space and great to see it being updated to meet the times and provide for the growing families in the area	Noted.
Could be closer to parking facilities	Noted.
Great use of space. Covered seating would be great for carers.	Design related submission noted for consideration.
Perfect access for local kids	Noted.
No	Noted.
It is an unused area that would be perfect for a skate space.	Noted.
I'm not opposed as it's a good spot for a number of reasons. However, two concerns: skating kids will most certainly use the footpath to ride their skateboards to the facility regardless of signs or any kind of enforcement. This will create issues with pedestrians, kids on bikes and dogs. How do you propose managing this? And judging by the number of Facebook comments, there are similar facilities nearby. Have other locations been considered and reviewed (Charles Veryard, etc.)?	The high frequency of dog walkers and general users was acknowledged when considering the proposed location and accounting for the size of the reserve that these users could co-exist with an appropriate design. The skate space will be located as far as possible from the active path and sporting reserve, and will include natural buffering with trees, greenspace and logs. Various parks/reserves around Mount Hawthorn and North Perth were identified, however Britannia Reserve was the preferable site to achieve the best design outcome and value to the community.
Thrilled to have a skatepark in neighbourhood. Shame the location is so small therefore will offer limited skating features to accommodate range in ages using the facility. Understand challenges in finding a location.	Noted.
This location links extremely well with the currently overcrowded new pump track at Lake Monger	Noted.
It needs to be a bit of a destination otherwise its over in the 'corner' by itself. Like other Skate Sculpture projects it should include gazebo shelters and other activation items to attract people to make it feel lively.	Design related submission noted for consideration.
I support the proposed location - it seems entirely appropriate.	Noted.
YIPPEEEEE! Me and my kids (who skate) are stoked!	Noted.
Perfect Spot!!!!	Noted.
Extensive consultation. Don't want to lose more green space. Make sure site is within under utilised space. Doesn't make sense so close to Leederville. Already a lot of amenities. If goes ahead more greenery.	Design related submission noted for consideration.
Sloppy back & spine included. Simple is good.	Design related submission noted for consideration.
Great to be near bikes. Not near residential which is good.	Noted.
Concerned about view from surrounding residents. Don't want to look at concrete but want to continue looking at landscaping. Have natural elements incorporated where possible.	Design related submission noted for consideration.
There are already too many uses for the Britannia reserve	Noted.
The bike pump track has been fantastic. Another great initiative.	Noted.
Next to the bike area is good. Does it get coverage from the new lights?	It will only get limited lighting from the sports lighting, this is intended due to catering towards younger aged children and not enticing late night activity in this location.
Would prefer if the lighting is turned off by late evening to discourage late-night use and the associated noise from skateboards and youths hanging around.	Noted.
The impact of the independent elderly residence, the young families with children and the off lead dogs by having unsupervised Youths is reckless. Putting the safety of our community at risk.	The high frequency of dog walkers and general users was acknowledged when considering the proposed location and accounting for the size of the reserve that these users could co-exist with an appropriate design. The skate space will be located as far as possible from the active path and sporting reserve, and will include natural buffering with trees, greenspace and logs.
The City of Vincent has already (2) two skate parks already - Leederville and Lake Monger. Another skate park is not required - Money can be used elsewhere.	The Town of Cambridge recently opened their Lake Monger Pump Jump Track, however this is not the same facility. This proposed skate space will be designed towards younger children and entry-level skaters, and will enable them to develop their skills and eventually transition to the Leederville Skate Park and other more advanced skate parks.



I would prefer to keep Britannia as it is as it is relatively peaceful for walking around and feel the skate park would do a lot of noise at all times of day.I think a much better location would be the small patch of grass behind the stadium next to the mulch supply.It is a bit of a waste ground .There are also less houses nearby for noise impact.	The high frequency of dog walkers and general users was acknowledged when considering the proposed location and accounting for the size of the reserve that these users could co-exist with an appropriate design. The skate space will be located as far as possible from the active path and sporting reserve, and will include natural buffering with trees, greenspace and logs. The proposed location was preferred by the project Working Group to complement the existing amenities and co-locate with them at the site, attracting the same user demographic that already use the pump track and mountain bike trail.
Great spot for it, not too close to residents is great	Noted.
Please dont cut down any trees	Noted.

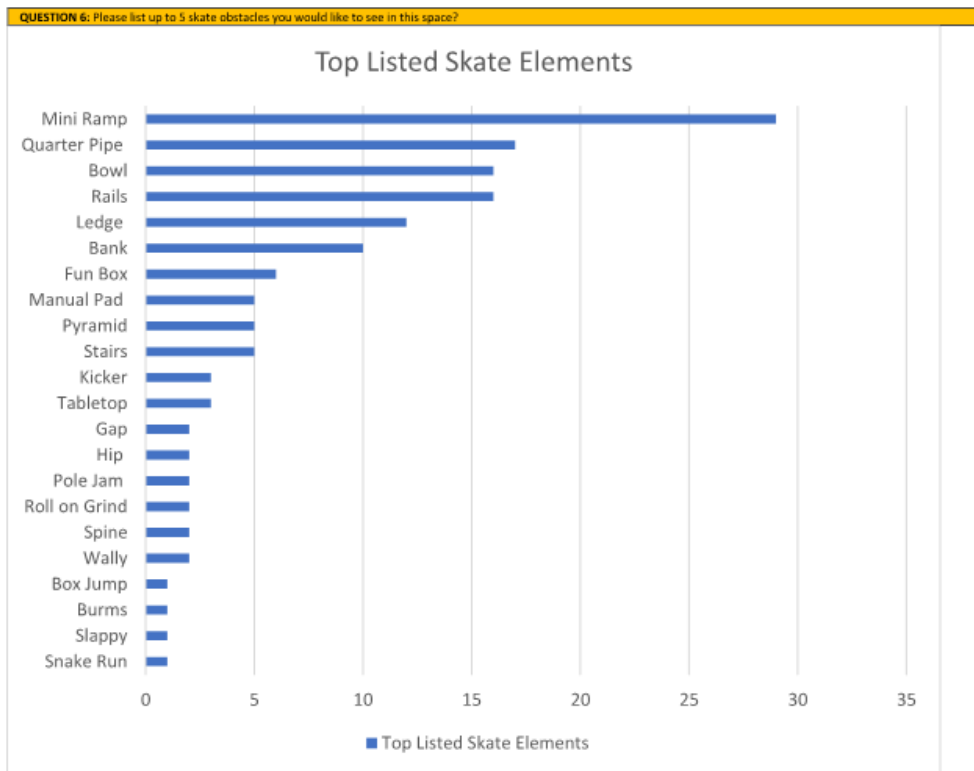
QUESTION 4: Would you foresee this proposed skate space location impacting on your current activities at Britannia Reserve?	
Submitter Comments Verbatim	Administration Comments
No add long as the cricket ovals are not impacted	The proposed location will not impact the current cricket activities.
No	Noted.
Impacting in a positive way in that I would visit more often in the future.	Noted.
Yes I think it will mean lots of over 12s cycling on the footpath and causing harm to walkers/dogs /younger children	The active footpath is not in the project scope, however note this comment for reserve considerations and if regular conflicts emerge following its implementation then will look at measures to alleviate this.
No	Noted.
Yes, i'd see it as positively improving current activities by providing facilities for more people to use and engage with the reserve. More people utilising reserves/public spaces creates better atmosphere.	Noted.
No, even though I walk regularly past the area.	Noted.
No	Noted.
No	Noted.
Negative at night,okay thru the day but not the best location	Noted.
Only in a positive manner.	Noted.
No. However, with the number of dogs being regularly exercised at the park, there would need to be some sort of fence to ensure they are kept out of the skatepark.	Design related submission noted for consideration.
No, it's a great compliment to the pump track and tennis courts	Noted.
No.	Noted.
no	Noted.
No	Noted.
The more activation the better!	Noted.
would be using it as it's closer than our usual skateparks	Noted.
Yes, in a positive way.	Noted.
No	Noted.
Absolutely not, I think it'd be fantastic	Noted.
Yes definitely. We would not be able to take our dog to the park as she is frightened of skateboards	Design related submission noted for consideration.
yes, I am an elderly lady and my safety, when walking in the park, is already threatened by skate boarders, scooters and cyclist all speeding through - this is already a dangerous walk - and will obviously get much worse. I live very close to this area and am surprised that those of us living in this area have not been consulted.	The high frequency of dog walkers and general users was acknowledged when considering the proposed location and accounting for the size of the reserve that these users could co-exist with an appropriate design. The skate space will be located as far as possible from housing, and will include natural buffering with trees, greenspace and logs. The skate park in Leederville caters to older and more advanced skaters, this skate space will cater towards younger children and entry-level skaters. The active footpath is not in the project scope, however note this comment for reserve considerations and if regular conflicts emerge following its implementation then will look at measures to alleviate this.
No	Noted.
Increase how often we visit as kids grow and are confident enough to ride it on their bikes or scooters	Noted.
No	Noted.
Question is rather: What value would the proposed skate space add to my family's current activity at Britannia Reserve? Answer: Zero	Noted.
No	Noted.
Not at all	Noted.

No	Noted.
No	Noted.
Not negatively, we'd probably be there more frequently	Noted.
Not at all, only encourages use of the space	Noted.
As above - I do hold concerns for dogs that might go onto the skate park lured by food, kids or fast-moving scooters and skateboards and get injured.	Design related submission noted for consideration.
Definitely.	Noted.
Not really but some logs around to deter the dogs running thru as this could be dangerous for the kids	Design related submission noted for consideration.
No how many boring ovals does this region need	Noted.
Yes, it will have a negative impact on the current regular park users due to the noise that skate parks create.	Design related submission noted for consideration.
Potentially yes. If older kids frequent it then it becomes a space for anti social behaviour after dark when younger kids have sports training. If there isn't adequate safe separation, it would limit the off lead activities for pet owners.	Design related submission noted for consideration.
Will visit more with kids on scooters if it accommodated entry level obstacles	Noted.
Yes. I would likely clash with use of the area for dog exercise and walking.	The proposed location is currently used for the City to store mulch, and would look to increase the natural greenspace and trees surrounding the area. The high frequency of dog walkers and general users was acknowledged when considering the proposed location and accounting for the size of the reserve that these users could co-exist with an appropriate design. The skate space will be located as far as possible from the active path and sporting reserve, and will include natural buffering with trees, greenspace and logs.
No.	Noted.
No	Noted.
No	Noted.
It would improve the time we spend their with our children and dog	Noted.
I would for sure go more often with my kids to practice skateboarding.	Noted.
No	Noted.
Yes. This is already a well used park by many sporting groups etc. It can often feel crowded so I use this space to exercise.	Noted.
No	Noted.
No	Noted.
Not unless the pump track is going to be removed to accommodate it; this is still very popular	The proposed skate space location will not affect the pump track.
Yes, as above. Skateboards etc using the same paths as dogs, small kids, bikes.	Noted.
No	Noted.
No, great addition	Noted.
No	Noted.
N/a	Noted.
No not at all, it would enhance the reserve	Noted.
It will take away space from where the dogs can defecate	Noted.
It would add to the facilities.	Noted.
No - in fact I will enjoy watching them skate and no doubt my grandkids would also use it.	Noted.
Yes I rarely go to Britannia as there is a park much closer to my house but would love another option to skate at other than the footpath.	Noted.
No	Noted.
Yes, as this is yet another ill-considered vote catching exercise that once installed won't be properly managed by the City.	The high frequency of dog walkers and general users was acknowledged when considering the proposed location and accounting for the size of the reserve that these users could co-exist with an appropriate design. The skate space will be located as far as possible from housing, and will include natural buffering with trees, greenspace and

What about the nearby elderly residents? What is the City doing for them other than make the Reserve too dangerous for them to use?	logs. The skate park in Leederville caters to older and more advanced skaters, this skate space will cater towards younger children and entry-level skaters. The proposed location also contains limited vegetation and is used for the City to store mulch, and would look to increase the natural greenspace and trees surrounding the area.
No	Noted.
No	Noted.
No	Noted.
Only that we might use it with our toddler. Alternatively we will have to keep our dog away whe we walk at Britannia	Noted.
Some concern re small kids on skateboards not staying within park and interacting with pedestrians and dog on walk path	Design related submission noted for consideration.
no	Noted.
No	Noted.
Yes already I'm driven off the path when I walk daily by bikes As an older person the path was originally supposed to benefit the older age group.	The active footpath is not in the project scope, however note this comment for reserve design considerations and if regular conflicts emerge following its implementation then will look at measures to alleviate this.
Not if it's fenced	Design related submission noted for consideration.
Yes	Noted.
No	Noted.
No, I do not foresee this proposed space impacting on my current activities at Britannia Reserve	Noted.
No	Noted.
No	Noted.
Hopefully not. Use it primarily to exercise dog. Only thing that could impact is if my dog decides to visit the skaters and gets in the way!	Design related submission noted for consideration.
Only to add value.	Noted.
No but we just wouldn't go there with our kids. Do you know how many kids this would service? And aren't kids in this group already well serviced by nearby parks? Could a series of half netball/ bball/ tennis/volley/badminton courts attract a much wider usage?	The skate space has been funded by the State Government to address community feedback towards the shortage of skateable infrastructure that caters to younger children. The City have recently upgraded a number of nature playgrounds, and are always interested to hear from the community on what other facilities/amenities they would like to see in their local area.
It would improve my families activities there, and my own	Noted.
No, the proposed facility will be adding amenity the the current Britannia Reserve along with the current oval and playgrounds.	Noted.
It would give me another reason to use the park	Noted.
Not at all. It is essential that facilities that meet the needs of our young citizens are provided. As a group, we will all reap the benefits.	Noted.
No impact as long as it doesn't take space away from bike tracks	The proposed location will not impact the current pump track or mountain bike trails.
No only would increase our uso	Noted.
Not at all, it will be great for the community	Noted.
No, only an improvement, better use of space, more people outdoors!	Noted.
Yes, I would increase my visitations	Noted.
not at all	Noted.
No	Noted.
Yes if they skateboard along path to get there. Skateboards, dogs, elderly and prams don't mix	The active footpath is not in the project scope, however note this comment for the reserve consideration and if regular conflicts emerge following its implementation then will look at measures to alleviate this.
Yes. Although there would be a skate park you will find people will stake on the path to get there. Unfair for older people and dogs.	The active footpath is not in the project scope, however note this comment for the reserve considerations and if regular conflicts emerge following its implementation then will look at measures to alleviate this.
It will add another use to the reserve for young people which is good	Noted.
Only in apositive way, plus there is plenty of park still available to dog walkers if they are worried, the the reserve should be shared.	Noted.
This would definitely make our family use the public space more often.	Noted.
No	Noted.

It would not affect our use of the pump track or running around the footpath loop. I believe our family would also use this facility	Noted.
No.	Noted.
No	Noted.
No	Noted.
No	Noted.
No absolutely not. It would enhance my family's activities.	Noted.
See above. Just general noise and kids skating on the footpaths to get there.	Noted.
No it is located away from other sporting facilities.	Noted.
No negative impact, only positive. Adds another terrific activity space to a great community location.	Noted.
Yes, as my child grows I will encourage use of a skate space.	Noted.
Increase in noise, what age group is this skate park aimed at? Under twelves not so bad. Over 12 Definley not.	The proposed skate park will be designed to cater towards younger children and include entry-level skate elements that will be much smaller than at Leederville Skate Park, however would still anticipate usage from a range of other demographics, particularly in the short term following construction.
Not in a negative way.	Noted.
It will mean we will be coming down here a lot more and take our dogs.	Noted.
No, it's so small people would hardly feel the impact.	Noted.
Yes, as it will bring more people to the area. Will be negative if impacts natural view and tranquility.	The skate space design will include consideration to the current surrounds and incorporate appropriate landscaping to integrate the provision into the reserve.
Yes, would come to skate.	Noted.
No, dog walker	Noted.
Yes negativity if can see lots of concrete.	The skate space design will include consideration to the current surrounds and incorporate appropriate landscaping to integrate the provision into the reserve.
No, I walk my dog around that area but generally stay on the path	Noted.
Yes. There are already too many activities within the park which is extremely noisy from pre dawn to well after dark, not to mention the light pollution. It no longer has aesthetic value.	Noted.
No, it would be great for kids	Noted.
No	Noted.
No.	Noted.
No	Noted.
Please tell me when and how you have gathered support for this proposal. This is too much. Please show some respect for the residents on the park.	The skate space has been funded by the State Government to address community feedback towards the shortage of skateable infrastructure that caters to younger children and entry-level skate abilities. The skate space is viewed to complement the existing features at the reserve for families and children to interact with.
Noise - screaming - graffiti - Drug Use and dealing - such as Leederville!	The skate space will be designed to cater primarily to young children and 'tweens', however will be considerate to enable any age or ability of skater to use the facility.  The design will include a natural buffer zone between the pump track and the proposed skate space location. It will also be designed to complement the current wheeled sport amenities, and be small-scale to suit similar user demographics.  The proposed location was deemed preferable based on the clear sightlines to the area from across the reserve and frequent use resulting in good passive surveillance.
Yes.	Noted.
No	Noted.
No	Noted.





**QUESTION 7: Do you have any other comments on the location or design aspect of the skate space?**

Submitter Comments Verbatim	Administration Comments
No	Noted.
make accessible to all age groups, focus on younger given older kids already have Leederville and the new one at lake monger	The proposed skate park will be designed to cater towards younger children and include entry-level skate elements that will be much smaller than at Leederville Skate Park, however would still anticipate usage from a range of other demographics, particularly in the short term following construction.
No thank you.	Noted.
I support a skate park, just question the proposed location right in middle of the reserve	Noted.
Design would ideally be suitable for a range of ages and abilities	The proposed skate park will be designed to cater towards younger children and include entry-level skate elements that will be much smaller than at Leederville Skate Park, however would still anticipate usage from a range of other demographics and abilities.
As long it is big enough to cater for a variety of ages using the facility	The proposed skate park will be designed to cater towards younger children and include entry-level skate elements that will be much smaller than at Leederville Skate Park, however would still anticipate usage from a range of other demographics and abilities.
I think this will be an awesome addition to britannia!	Noted.
Shaded seating areas would be great, as well as a drink fountain (with a bottle refill tap). Local artists should be asked to paint the skatepark.	Design related submission noted for consideration.
Closer to the mezz and Leederville have a skate park, a bus service close by would help teenagers get there and not walk along a dark bike path to get there	The proposed location was preferred by the project Working Group to complement the existing amenities and co-locate with them at the site, attracting the same user demographic that already use the pump track and mountain bike trail.

	This proposed skate space will be designed towards younger children and entry-level skaters
Please keep roller skaters in mind when designing the park, not just skateboards and scooters, thanks.	Noted.
Needs lights and also smaller obstacles where kids can build confidence on.	Design related submission noted for consideration.
do it now!	Noted.
two tone concrete!	Design related submission noted for consideration..
Get skaters to design it.	Noted.
I think the location is perfect, far away from houses for potential noise but also great for parents to keep an eye on their kids	Noted.
Please place it away from Britannia oval.	The proposed location was preferred by the project Working Group to complement the existing amenities and co-locate with them at the site, attracting the same user demographic that already use the pump track and mountain bike trail.
I thought we already had a skate park near the train station - why do we need another?	The proposed location was preferred by the project Working Group to complement the existing amenities and co-locate with them at the site, attracting the same user demographic that already use the pump track and mountain bike trail.  This proposed skate space will be designed towards younger children and entry-level skaters, and will enable them to develop their skills and eventually transition to the Leederville Skate Park and other more advanced skate parks.
There should be adequate signage that this is for skateboard/scooter use only - to avoid hazards of toddlers or children not on scooters playing in the area.	Design related submission noted for consideration.
I would think about how to differentiate it from the one at Leederville and make that a key design goal. It would be good to have some obstacles for beginner-intermediate skaters/bikers as well as some for more advanced with progression so kids can build their skills. I'm likely dreaming but it would be great to upgrade the pump track to a proper one so it serves as a complementary asset to the skate park more focussed on bikes. The current pump track isn't fit for purpose. The kids are still building jumps at the north end of the park because you can't jump anything in the pump track.	The proposed skate park will be designed to cater towards younger children and include entry-level skate elements that will be much smaller than at Leederville Skate Park, however would still anticipate usage from a range of other demographics and abilities.
Adequate night lighting Adequate Shade Water fountain Benches Litter bins Distance from parking is a plus and minus - will keep it more for locals, but may increase the foot traffic (and skaters) on the access paths to the skate park itself.	Design related submission noted for consideration.
Find another site in the City of Vincent that does not already have two nearby.	The proposed location was preferred by the project Working Group to complement the existing amenities and co-locate with them at the site, attracting the same user demographic that already use the pump track and mountain bike trail.  This proposed skate space will be designed towards younger children and entry-level skaters, and will enable them to develop their skills and eventually transition to the Leederville Skate Park and other more advanced skate parks.
We visited the one in Miami on the Gold Coast recently which was very impressive that might offer some design ideas.	Noted.
- being remote from other facilities, is there a likelihood of poor behaviour or vandalism?	The proposed location was preferred by the project Working Group to complement the existing amenities and co-locate with them at the site, attracting the same user demographic that already use the pump track and mountain bike trail.
Would love to see separation of the older obstacles from the younger ones for safety and allowing the older kids/adults a space to safely take risks without fear of hurting younger users. The Albany skate park is an amazing example of this separation with something for younger users, medium obstacles for mid range and then advanced obstacles for older/advanced skills	The proposed skate park will be designed to cater towards younger children and include entry-level skate elements that will be much smaller than at Leederville Skate Park, however would still anticipate usage from a range of other demographics and abilities.
A very pleasant idea for a suburb that is appealing to youth and families. Will bring young people to central areas and cultural hubs	Noted.
Use another area in Vincent	The proposed location was preferred by the project Working Group to complement the existing amenities and co-locate with them at the site, attracting the same user demographic that already use the pump track and mountain bike trail.
Similar to perry lakes would be great	Noted.
Would be nice to fix the kids pump track while you are at it	Noted.

<p>This is much too close to the Leederville Skate Park. Please do not ruin our peaceful enjoyment of Britannia Reserve. A lot of elderly people and dog owners seek out a quiet peaceful experience there on a daily basis. It is one of the only large green spaces left around here. If you put in a skate park it will detract from this and you may see a number of local residents using it less. Please don't forget that there is a retirement village next to this park too. Thank you.</p>	<p>This proposed skate space will be designed towards younger children and entry-level skaters, and will enable them to develop their skills and eventually transition to the Leederville Skate Park and other more advanced skate parks.</p> <p>The skate space is viewed to complement the existing features at the reserve for families and children to interact with. The skate space design will include consideration to the current surrounds and incorporate appropriate landscaping to integrate the provision into the reserve.</p>
As above	Due to varying constraints, this will not be possible for this project.
Good location for more youth amenity but not sure if skatepark is in demand.	Noted.
<p>By their nature they are usually a heat sink. Trees unfortunately do not form a good fit due to debris and consequent accidents from wheels jamming on nuts, twigs etc. Some shade in a suitable spot would be good, maybe seasonal shade sails to extend the life of them. Water fountain if possible. Seating for parents, maybe raised for visual observation over the skatepark and the small bike track incorporated into an adjoining nature scape area which would have multiple benefits and uses.</p>	Design related submission noted for consideration.
Aim at complete beginner to intermediate or primary school age. have some kind of seating for parents and carers.	Design related submission noted for consideration.
<p>It would be great to see construction of a wider (less narrow) skate space, rather than a 'skate path'. While I understand that the intention of parks of this 'path' style is to channel movement in one of two directions in an up/down flow, this layout often causes conflicts of use between beginner and more advanced users.</p> <p>As such, I believe that a 'squarer' slab arrangement (such as Crimea Skatepark in the City of Bayswater) will facilitate more freedom of movement around the space, allowing beginners, intermediate and advanced riders alike to pick and choose their 'lines' in a way that minimises conflict.</p> <p>Noting the area constraint of 300m<sup>2</sup>, I believe that dimensions in the order of 25m long by 12m wide would strike the right balance between channeling flow and allowing freedom for riders to choose their own lines around the space.</p> <p>Thank you!</p>	Design related submission noted for consideration.
<p>3 different levels :          Beginner          Intermediate          Pro          + covered area would be perfect for hot or rainy days</p>	Design related submission noted for consideration.
If it could be designed to be multi use	Design related submission noted for consideration.
Another concrete fixture in a beautiful green space that limits the use of the park by majority of the local population is not well thought out. It's a busy & well used park.	The high frequency of dog walkers and general users was acknowledged when considering the proposed location and accounting for the size of the reserve that these users could co-exist with an appropriate design. The skate space will be located as far as possible from housing, and will include natural buffering with trees, greenspace and logs. The skate park in Leederville caters to older and more advanced skaters, this skate space will cater towards younger children and entry-level skaters. The proposed location also contains limited vegetation and is used for the City to store mulch, and would look to increase the natural greenspace and trees surrounding the area.
No some good council skate parks around	Noted.
See above. Design and layout of Perry lakes is outstanding. Allows 'areas' for all abilities and is large enough to accommodate the very small, young scooters and those older and more adventurous and with higher skills at skateboarding/scooting to be separated into skill level areas.	Design related submission noted for consideration.
Attach a small play area for smaller children	Design related submission noted for consideration.
<p>I think this is brilliant and the kids are really lucky.</p> <p>Do the best consultation you can with regular users of skate parks and the kids.</p> <p>It's hard combining 4 year olds on scooters and 14 year olds on BMX but let the kids solve it, not the adults</p>	Noted.
Please just build it and lets get the kids off the street participating in a healthy activity.	Noted.
Please don't scrimp on budget do something decent like at Perry lakes. COV is way behind other councils ATM	Noted.
<p>Properly consult with the whole community, especially the residents of Leederville Gardens who will be most impacted by yet another high-impact eye sore on Britannia Reserve.</p> <p>Why is this consultation period so short? To push the proposal through?</p> <p>Who is benefiting from all of the money being spent on installations on Britannia Res, certainly not the whole community.</p>	<p>The comments and feedback collected from this 14 day preliminary consultation period was used to inform the development of the draft Concept Design. The properties within Leederville Gardens Retirement Village were provided letter notification of the survey, pop-up event and consultation period.</p> <p>Further formal consultation will occur following advice from Council.</p>



	The funding objective from the State Government grant is to construct a youth facility that will be catering towards families and young skaters that will be addressing a need outlined by the community.
As above	Noted.
Younger kid area and older kid area to separate speeds etc.	Design related submission noted for consideration.
It's badly needed in the area	Noted.
Again, would like to see some elevation of skaters and dogs using the park, for safety reasons it might need to be fenced.	Design related submission noted for consideration.
No	Noted.
If you proceed which I hope not as far away from homes as possible fenced with access from bush freeway side and not the footpath on the inside near the grass	Design related submission noted for consideration.
Skate park should be near the water corp and youth centre	This proposed skate space will be designed towards younger children and entry-level skaters, and will enable them to develop their skills and eventually transition to the Leederville Skate Park that is located next to the Leederville YMCA (and other more advanced skate parks).
No	Noted.
Because of isolation, evening / night time use might be limited for users as it may be unsafe.	Noted.
Maybe fenced to stop dogs being walked - getting into area and possibly getting hurt or causing an accident with skaters etc..	Design related submission noted for consideration.
The best part about pump and jump track is that it integrates with natural elements of park well. I'm sure it's harder to achieve for a surface suitable to skates - but would like to see this considered. Also would love to include integrated artwork. It makes it enjoyable for the kids - especially for the young ones - if there are different points of interest at different obstacles within the course/track. That helps when they are feeling challenged to learn a new skill. So fun designs - or better yet, artwork - that are also sympathetic to natural elements would get my vote!	Design related submission noted for consideration.
This funding has already been allocated and decided. I guess the teenage and younger girls can go hang out on tik tok and the shopping mall.	Noted.
Its a great idea	Noted.
Willeton skate plaza is a great example Similar elements please	Design related submission noted for consideration.
The council must ensure that this project doesn't impact on others who enjoy this park in various ways.	Noted.
Great idea!	Noted.
Great location and good to see COV looking to expand its skate facility options for the community! Please start building it soon 🙌	Noted.
Please include: A drink fountain. Trees & shade around the perimeter with seating for tired kids.  My comments are on behalf of my family with young children. Thank you	Design related submission noted for consideration.
Yes, definitely look at a roller hockey court	Due to varying constraints, this will not be possible for this project.
Make it indoor with big fans on the roof	Due to varying constraints, this will not be possible for this project.
I can't see concept? I think it definitely must be limited to younger kids else they can go to the existing one at Leedy. Carpark at Aranmore Primary used at night often with music. Very annoying. Maybe up to 12 years old and not after 7pm.	The comments and feedback collected from this preliminary consultation was used to inform the development of the draft Concept Design. Further formal consultation will occur following advice from Council.
Not in a park. This park is busy at all times of the day and I foresee accidents on walking paths.	The skate space design will include consideration to the current surrounds and incorporate appropriate landscaping to integrate the provision into the reserve.
Do not put ramps close/squished together	Design related submission noted for consideration.
Great location next to the mountain bike track and so needed for an area with growing families and young kids	Noted.
Love that the council is continuing to improve the area	Noted.

Well lit, spaces to rest.	Noted.
Drinking water please nice and close to skate park	Design related submission noted for consideration.
No.	Noted.
It would be really awesome to have a skate space where we live :P	Noted.
Good to have some features for older kids with lighting available particularly weekend evenings, with consideration to toilet facilities open. Thank you ToV for always seeking new spaces for our kids :)	Noted.
Please don't do a half job! Do it right, make it amazing. Also please don't let antiquated views of a small minority (for whom a skate park would have next to no impact), derail positive projects like this that are valued by so many of all ages.	Noted.
Like other Skate Sculpture projects it should include gazebo shelters and other activation items to attract people to make it feel lively. The nature design that Skate Sculpture used in Forrestfield and Boddington would be good aesthetically.	Design related submission noted for consideration. Through the design phase, supporting infrastructure will be considered. The skate space design will include consideration to the current surrounds and incorporate appropriate landscaping to integrate the provision into the reserve.
No.	Noted.
Please do not use gravel, mulch, stones or trees/bushes that drop nuts surrounding the park and make sure the flat ground (concrete pad) level is higher than the grass level to assist sweeping debris off the park without it blowing back on.	Design related submission noted for consideration.
The more transition with coping the better.	Design related submission noted for consideration.
Keep natural elements.	Design related submission noted for consideration.
Good location.	Noted.
Include water feature.	Design related submission noted for consideration.
There are already so many activities within the park. Since I purchased the property abutting the park, off-lead dogs have been permitted throughout the park (constant yelling, whistling and clapping is heard from pre dawn to after dark), a path has been installed within metres of the property line, lights have been installed around the path, multiple organised sports are played, an off-road bike track was installed, enormous lights have been installed and are lit every night, the school uses the park for exercise sessions, and a technology tower is soon to be installed. Enough is enough!	The high frequency of dog walkers and general users was acknowledged when considering the proposed location and accounting for the size of the reserve that these users could co-exist with an appropriate design. The skate space will be located as far as possible from housing, and will include natural buffering with trees, greenspace and logs. The skate park in Leederville caters to older and more advanced skaters, this skate space will cater towards younger children and entry-level skaters. The proposed location also contains limited vegetation and is used for the City to store mulch, and would look to increase the natural greenspace and trees surrounding the area.
Toilet's please and the current playground would benefit of an uplift	Design related submission noted for consideration.
Can we please get some tables installed at Britannia Reserve? There are currently only a few benches, but no tables.	Design related submission noted for consideration.
Move to a more appropriate location for the youth's to have access to public transport ie near bus depot or train stop	The proposed location was preferred by the project Working Group to complement the existing amenities and co-locate with them at the site, attracting the same user demographic that already use the pump track and mountain bike trail. Distance to public transport was a consideration in the site selection process, the closest bus stop is on Britannia Rd at the north-east corner of the reserve.
YES. One is already going in Leederville - Another at Lake Monger - How many SKATE PARKS do you have to have.	The Town of Cambridge recently opened their Lake Monger Pump Jump Track, however this is not the same facility. This proposed skate space will be designed towards younger children and entry-level skaters, and will enable them to develop their skills and eventually transition to the Leederville Skate Park and other more advanced skate parks.
Move it to the above mentioned area next to the mulch patch.	Noted.
Please maintain pathway and trees!	Noted.



**LEGEND**

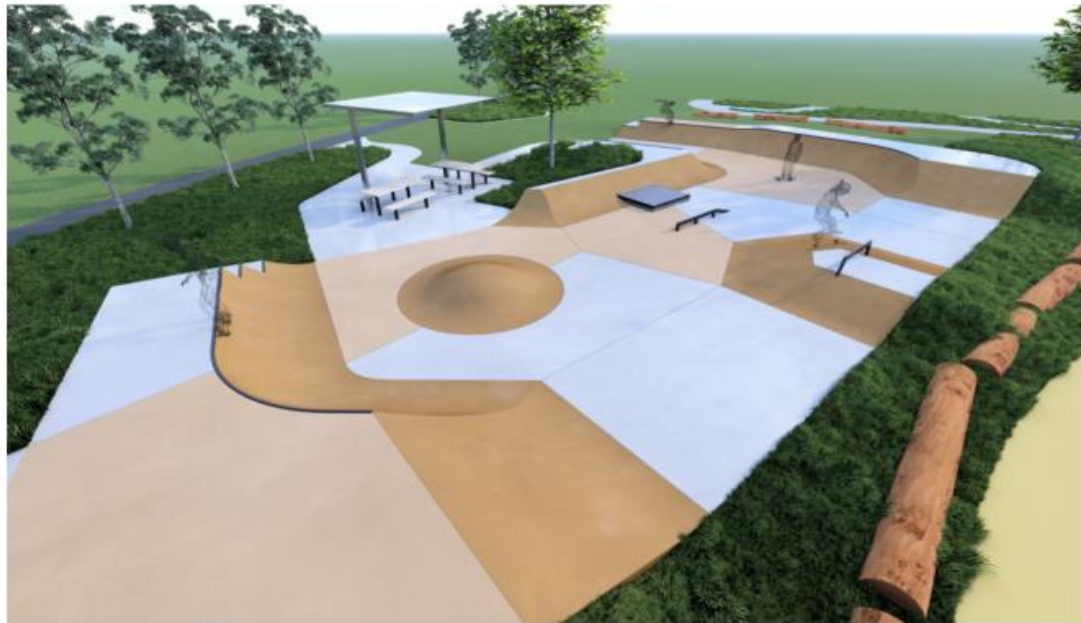
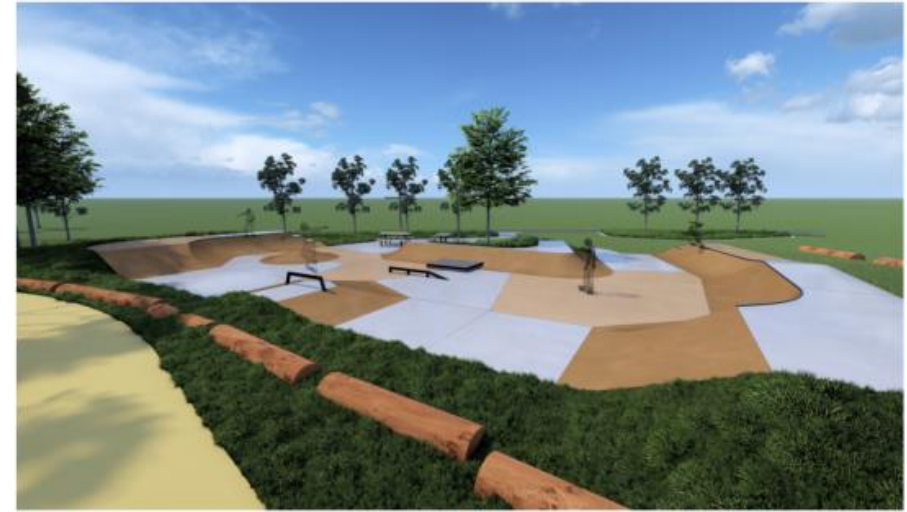
- 1 QUARTER PIPE (900H) WITH STEP DOWN AND POCKET BANK (900H)
- 2 BANK (900H)
- 3 PYRAMID BOX (400H) WITH RAIL (400H)
- 4 FLAT RIDE UP RAIL (250H)
- 5 TURN AROUND QP WITH POCKET (900H)
- 6 MINI RAMP (750H) WITH STEP DOWN END (450H)
- 7 SLAPPY BANK (750H) WITH MANUAL PAD (200H)

- 8 PUMP BUMP (450H)
- 9 LOG SEATING
- 10 GRASS HANGOUT
- 11 SHADE STRUCTURE WITH PICNIC BENCHES
- 12 EXISTING PUMP TRACK LOCATION



**BRITANNIA LOCAL YOUTH SKATE SPACE**  
CONCEPT MASTER PLAN





**BRITANNIA LOCAL YOUTH SKATE SPACE**  
CONCEPT RENDERS



**BRITANNIA LOCAL YOUTH  
SKATE SPACE  
CONCEPT PERSPECTIVE -  
FROM ACTIVE PATHWAY**







