

5.5 ADVERTISING OF AMENDED CHARACTER AND HERITAGE AREAS POLICY - ORANGE AVENUE AND HOPE STREET

- Attachments:**
- 1. Amendment 6 to Local Planning Policy: Character Areas and Heritage Areas**
 - 2. Draft Orange Avenue and Hope Street Character Area Guidelines**
 - 3. Comparison Table Proposed vs Existing Built Form Provisions**

RECOMMENDATION**That Council:**

- 1. PREPARES the amendments to the Character Area and Heritage Areas Policy as included as Attachments 1 and 2 in accordance with Schedule 2, Part 2, Clause 5 of the *Planning and Development (Local Planning Schemes) Regulations 2015*; and**
- 2. AUTHORISES the Chief Executive Officer to advertise the proposed amendments in accordance with Schedule 2, Part 2, Clause 4(1) of the *Planning and Development (Local Planning Schemes) Regulations 2015*.**

PURPOSE OF REPORT:

For Council to consider amendments to the Character Areas and Heritage Areas Policy (Policy) for public advertising, including the draft Orange Avenue and Hope Street Character Area Guideline (Guideline).

BACKGROUND:

A Character Area is a collection of houses, streets, or part of a suburb that contains built form characteristics valued by the community. Character Areas can be 'nominated' by members of the public with the support of at least 40 percent of owners required in the subject area. A Character Area is set up with its own planning guidelines containing 'Deemed to Comply' provisions and a Local Housing Objective that augments State Planning Policy 7.3 Residential Design Codes, operating in a similar manner to the City's Built Form Policy.

Since 2015, eight Character Areas have been adopted under the Policy (**Attachment 1**), with Council most recently adopting the Wilberforce Street Character Area Guideline at its Meeting on 26 July 2022.

On 7 April 2022, the City received a nomination for Orange Avenue and Hope Street, Perth. This nomination was supported by 16 landowner signatures of the total of 29 lots representing 55 percent support for a Character Area. Since the nomination was received, the City has been in contact with the nominator and the landowners who signed the nomination form to maintain clear communication regarding the nomination.

DETAILS:

A preliminary investigation of the nominated streets determined that both make a positive contribution toward built character of Vincent, having retained character dwellings.

Preliminary discussions have occurred with the nominator and those who have signed the nomination form. Administration has prepared the Guideline as at **Attachment 2**, to enhance and promote design elements that are fundamental to maintaining the character of the streets. These guidelines focus on street setback, building height, carports and garages and building design.

A comparison table of the proposed provisions in the Guideline against the existing provisions outlined in Local Planning Policy No. 7.1.1 – Built Form is at **Attachment 3**.

CONSULTATION/ADVERTISING:

In accordance with the City's Community and Stakeholder Engagement Policy, community consultation of all new and significantly amended policies must be provided for a period exceeding 21 days in the following ways:

- notice published on the City's website;
- notice posted to the City's social media;
- notice published in the local newspapers;
- notice exhibited on the notice board at the City's Administration and Library and Local History Centre; and
- letters distributed to relevant local businesses and community groups.

The City will continue to engage with affected landowners through direct on street discussions to best understand what extent of the guidelines need to be altered and modified to align with community expectations.

LEGAL/POLICY:

The City's Policy Development and Review Policy sets out the process for the development and review of the City's policy documents.

The *Planning and Development Act 2005* and *Planning and Development (Local Planning Schemes) Regulations 2015* (the Regulations) provide the criteria for creating, amending, and reviewing Local Planning Policies.

Development controls are contained within the City's Local Planning Scheme No. 2 and State Planning Policy No.7.3 – Residential Design Codes of Western Australia (R-Codes). The guidelines operate by augmenting the R-Codes, which provides two pathways to achieve development approval, a prescriptive 'deemed to comply' standard (right hand column) and a more design based 'design principle' and 'local housing objective' (left hand column). This gives applicants for development approval the ability to vary certain provisions, if the design creates a better outcome for the development site.

RISK MANAGEMENT IMPLICATIONS

Low: It is low risk for Council to approve consultation of the Policy and associated Guidelines.

STRATEGIC IMPLICATIONS:

This is in keeping with the City's *Strategic Community Plan 2018-2028*:

Sensitive Design

Our planning framework supports quality design, sustainable urban built form and is responsive to our community and local context.

Our built form character and heritage is protected and enhanced.

Innovative and Accountable

We are open and accountable to an engaged community.

SUSTAINABILITY IMPLICATIONS:

The adoption of the Guideline for Orange Avenue and Hope Street will help to enable sustainable development outcomes in the future by encouraging the retention and renovation of character.

PUBLIC HEALTH IMPLICATIONS:

This does not contribute to any public health outcomes in the *City's Public Health Plan 2020-2025*.

FINANCIAL/BUDGET IMPLICATIONS:

The cost of advertising and implementing the Policy and associated Guideline will be met through the City's existing operational budget.

LOCAL PLANNING POLICY: CHARACTER AREAS AND HERITAGE AREAS



Legislation / local law requirements	This Policy has been prepared under the provisions of Schedule 2, Part 2 and 3 of the <i>Planning and Development (Local Planning Schemes) Regulations 2015</i> .
Relevant delegations	16.1.1 Determination of various applications for development approval under the City’s Local Planning Scheme
Related policies, procedures and supporting documentation	Nil

PART 1 – PRELIMINARY

PURPOSE

The purpose of this Policy is to:

1. Establish a framework to identify areas within the City of Vincent that contain characteristics that are valued by the community; and
2. Provide guidance on development in identified Character Areas and Heritage Areas.

OBJECTIVE

1. To identify areas within the City that contain characteristics valued by the community to be known as Character Areas and/or Heritage Areas;
2. To establish a planning and design framework to protect the streetscapes located within Character Areas and/or Heritage Areas;
3. To ensure that new buildings and additions to existing buildings will be sympathetic to the unique character of the streetscape; and
4. To distinguish between buildings within each Character Areas and/or Heritage Areas that contribute to the integrity of the streetscape and those which do not.

SCOPE

This Policy applies to:

1. The process used to identify and formally recognise Character Areas and Heritage Areas;
2. The identification and listing of development standards which will be used in assessing all development applications for properties within those Character Areas and Heritage Areas;
3. Appendix 1 of this Policy applies to applications for development in the St Albans Avenue Character Areas identified in Table 1 in Appendix 1;
4. Appendix 2 of this Policy applies to applications for development in the Harley Street Heritage Area identified on Figure 1 in Appendix 2;

LOCAL PLANNING POLICY: CHARACTER AREAS AND HERITAGE AREAS



5. Appendix 3 of this Policy applies to applications for development in the Carr Street Character Area identified on Figure 1 in Appendix 3;
6. Appendix 4 of this Policy applies to applications for development in the Janet Street Character Retention Area identified on Figure 1 in Appendix 4; and
7. Appendix 5 of this Policy applies to applications for development in The Boulevard and Matlock Street Character Area identified in Table 1 in Appendix 5.
8. Appendix 6 of this Policy applies to applications for development in the Florence Street Character Area.
9. Appendix 7 of this Policy applies to applications for development in the Prospect Place Character Area.
10. Appendix 8 of this Policy applies to applications for development in the Hammond Street Character Area.
11. Appendix 9 of this Policy applies to applications for development in the Strathcona Street Character Area.
12. Appendix 10 of this Policy applies to applications for development in the Wilberforce Street Character Area.
13. Appendix 11 of this Policy applies to applications for development in the Orange Avenue and Hope Street Character Area.

RELATIONSHIP TO OTHER DOCUMENTS

This Local Planning Policy forms part of the City of Vincent local planning policy framework. Where this Policy is inconsistent with the City's local planning scheme, the local planning scheme prevails. Where this Policy is inconsistent with an adopted Local Development Plan, Activity Centre Plan or Structure Plan, the adopted Local Development Plan, Activity Centre Plan or Structure Plan prevails.

Where this Policy is permitted to amend or replace the Deemed to Comply provisions under Clause 7.3.1(a) of the Residential Design Codes, the provisions of this Policy shall prevail. Where this Policy augments the Design Principles under Clause 7.3.1(b) of the Residential Design Codes by providing Local Housing Objectives, both the Design Principles of the Residential Design Codes and the Local Housing Objectives of this Policy shall apply.

Where this Policy is inconsistent with the provisions of another local planning policy the provisions of this Policy shall prevail.

LOCAL PLANNING POLICY: CHARACTER AREAS AND HERITAGE AREAS



CITY OF VINCENT

PART 2 – POLICY PROVISIONS

1. Development Standards

- 1.1. Applications for development that comply with the relevant 'Deemed to Comply' policy provisions and 'Local Housing Objectives' are considered to meet the Policy Objectives.
- 1.2. Applications for development that seek departure from the 'Deemed to Comply' policy provisions may be deemed to be acceptable where:
 - 1.2.1 The applicant applies for assessment, and provides adequate justification, against the relevant Design Principles of the R-Codes, Design Objectives, Local Housing Objectives, Policy Objectives and Objectives of the local planning scheme; and
 - 1.2.2 The application obtains the support of the City's Design Advisory Committee where the City determines it to be necessary.
- 1.3 The City will assess and determine at its discretion that the same or better outcome will be achieved than would have been provided by the 'Deemed to Comply' criteria.
- 1.4 Applications for development shall include a contextual elevation showing the elevation of the proposed development and the existing development on the adjoining properties either side pursuant to Schedule 2, Part 8, Clause 63(1)(d) of the *Planning and Development (Local Planning Schemes) Regulations 2015*.

2. Character Area Nomination

- 2.1 A Character Area may include the following:
 - 2.1.1 A collection of no less than five adjoining buildings;
 - 2.1.2 A street block; or
 - 2.1.3 A part of, or whole suburb.
- 2.2 A Character Area may be nominated in writing by a member of the public or by the City.
- 2.3 The City will only proceed with the nomination of the Character Area where it is demonstrated by the nominee that owners of at least 40% of affected properties support proceeding with the nomination.

3. Consultation and Preparation of Guidelines

- 3.1 Following the successful nomination of a Character Area, the City will attend and undertake an assessment of the built form within the Area. The purpose of this assessment will be to inform an advertised Character Area Guidelines.

LOCAL PLANNING POLICY: CHARACTER AREAS AND HERITAGE AREAS



CITY OF VINCENT

4. Approval of the Guidelines

- 4.1 Once the draft Guidelines have been prepared, Administration will request that Council initiate formal consultation in accordance with the City's community consultation policy.
- 4.2 Following advertising, Council will be asked to approve, refuse or approve with modifications the Guidelines to be included as an appendix to this policy based on the results of assessment and consultation.

5. Amendments to the Guidelines

- 5.1 The City may consider amending the Character Area Guidelines where it can be demonstrated that owners of at least 40% of the affected properties support the amendment(s).
- 5.2 Council must initiate formal consultation to advertise any amendment(s) in accordance with the City's community consultation policy.
- 5.3 Following advertising, Council will be asked to determine the amendment(s) on the basis of the submissions received.

6. Rescission of a Character Area

- 6.1 The City will only consider initiating the removal or abandoning a nomination of a Character Area where it can be demonstrated that owners of at least 70% of the affected properties support their removal.
- 6.2 If supported, Council must initiate formal consultation to amend the policy to remove the Character Area in accordance with the City's community consultation policy.
- 6.3 Following advertising, Council will be asked to determine the amendment on the basis of the submissions received.

7. Heritage Areas

- 7.1 The City may consider designating a Heritage Area in accordance with Part 3 of Schedule 2 of the *Planning and Development (Local Planning Schemes) Regulations 2015* in the following instances:
 - 7.1.1 Where a nomination has been received for a Character Area in accordance with (1) of this policy and the City is satisfied the area is suitably qualified to be designated as a Heritage Area following a Heritage Assessment;
 - 7.1.2 Where the City has undertaken a Heritage Assessment of any area and is satisfied it is suitably qualified to be designated as a Heritage Area following a Heritage Assessment.
- 7.2 If an area qualifies as a Heritage Area, the City will consult with affected landowners on the designation prior to making a recommendation to Council on whether to proceed in accordance with Part 3 of Schedule 2 of the *Planning and Development (Local Planning Schemes) Regulations 2015*.

LOCAL PLANNING POLICY: CHARACTER AREAS AND HERITAGE AREAS



APPENDIX 1: ST ALBANS AVENUE GUIDELINES

Table 1: Properties included in St Albans Avenue Character Retention Area

	Character Retention Areas Name	Street Number of Contributing Buildings	Street Number of Non-Contributing Buildings
1.	St Albans	6, 8, 10, 12, 14, 16, 18 7, 11, 15	9, 11A, 17

St Albans Avenue is located in the suburb of Highgate, to the west of Beaufort Street. Many of the residences located within the area were part of the 1890 Chatsworth Estate development, which was a residential development resulting from the Gold Boom. Buildings constructed during this time contribute to the highly intact and visually cohesive area.

KEY CHARACTERISTICS

- The area is a highly intact example of late nineteenth to early twentieth century residential development comprising fine examples of modest, single storey dwellings constructed in the Federation period of architecture;
- The overall form, style, height, setback and selection of materials of the character dwellings contribute to the uniformity of the streetscape, providing a coherent character with a high level of retained original detail including street facing verandahs and decorative gables;
- Generally consistent lot widths (where semi-detached residences are considered as one);
- A low number of carports or garages to street fronts; and
- Generally consistent setback of dwellings from the street.

DESIRED DEVELOPMENT OUTCOMES

- Retention and conservation of the Federation style dwellings;
- Retention of the visual dominance of late nineteenth to early twentieth century residential development within the Area.

1. DEVELOPMENT GUIDELINES FOR CONTRIBUTING BUILDINGS

Design Objectives
<p>1.1 Demolition</p> <p>1.1.1 Applications for the full demolition of the façade of dwellings will not be supported.</p> <p>1.1.2 The removal of original character features from a contributing dwelling which, are visible from the street will not be supported. Where original character features have been removed from dwellings, they should be reinstated where possible.</p>
<p>1.2 Building Setbacks</p> <p>1.2.1 Additions to the building, will only be supported where they are located behind the building.</p>

LOCAL PLANNING POLICY: CHARACTER AREAS AND HERITAGE AREAS



CITY OF VINCENT

Design Objectives	
1.2.2	Additions to the side of the original dwelling maybe supported where the applicant can demonstrate to the satisfaction of the Council that there are no adverse impacts on the original building façade and the character of the streetscape.
1.2.3	Side setbacks variations may be supported where they are in line with the existing dwelling and is in keeping with the rhythm of the existing streetscape.
1.3 Building Walls	
1.3.1	Variations to the building wall height may be supported if the proposed height is a continuation of the existing dwelling, and is in keeping with the rhythm of the existing streetscape.
1.4 Building Height	
1.4.1	Where an addition proposes an additional storey, it must not exceed 1 storey above the number of storeys of the original dwelling.
1.4.2	Any additional storey must be setback sufficiently to be in keeping with the rhythm of the streetscape.
1.5 Car Parking, Garages and Car Ports	
1.5.1	Carpports or garages are not to be located within the front setback area. Hardstand car parking bays may be supported where it can be demonstrated that there are no visual impacts on the streetscape.
1.5.2	Car ports and garages may be supported where they are located to the side or rear of a dwelling and are set back a minimum of 500mm behind the main building line. The structure must be open or a minimum of 50% visually permeable.
1.6 Street Walls and Fences	
1.6.1	Traditional fencing types as illustrated in Figure 1 (Appendix 1) are encouraged. Minor variations to the examples indicated in Figure 1 may be supported.
1.6.2	The maximum height of new fences facing the street is to be 1200mm above the adjacent footpath level.
1.6.3	The maximum height of any solid portion of a new fence is to be 750mm above the adjacent footpath level. The remaining portion (up to 1200mm total height) is to be a minimum of 50% visually permeable.

LOCAL PLANNING POLICY: CHARACTER AREAS AND HERITAGE AREAS



Design Objectives	
1.7	External Features and Decorative Treatments
1.7.1	Original and intact unpainted surfaces are not permitted to be rendered or painted.
1.7.2	Removal of paint/render from originally unpainted/non-rendered masonry is supported.
1.7.3	Loft additions may be supported where the development is contained wholly within the roof space and where no visible change to the dwellings appearance from the street is made.
1.8	Roof Works
1.8.1	New roofing additions must be sympathetic to the existing roof form.

2. DEVELOPMENT GUIDELINES FOR NON-CONTRIBUTING BUILDINGS

Design Objectives	
2.1	Demolition
2.1.1	Applications for full demolition of dwellings may be supported.
2.2	Building Setbacks
2.2.1	Setback variations may be supported where they are in line with existing dwellings on the street and is in keeping with the rhythm of the existing streetscape.
2.3	Appearance of Additions & New Dwellings
2.3.1	New dwellings must address the street and be consistent with the bulk and scale of adjacent dwellings.
2.4	Building Height
2.4.1	The height of any new development shall not exceed 2 storeys.
2.5	Street Walls and Fences
2.5.1	The maximum height of new fences facing the street is to be 1200mm above the adjacent footpath level.
2.5.2	The maximum height of any solid portion of a new fence is to be 750mm above the adjacent footpath level. The remaining portion (up to 1200mm total height) is to be a minimum of 50% visually permeable.
2.5.3	The use of contemporary style fences that complement the existing streetscape will be supported.

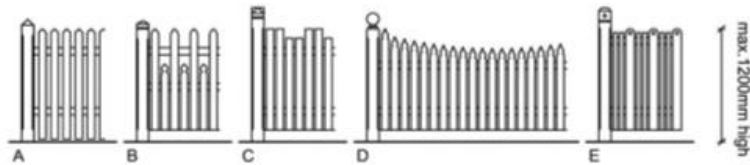
LOCAL PLANNING POLICY: CHARACTER AREAS AND HERITAGE AREAS



3. APPROPRIATE FENCING TYPES FOR CHARACTER RETENTION AREAS

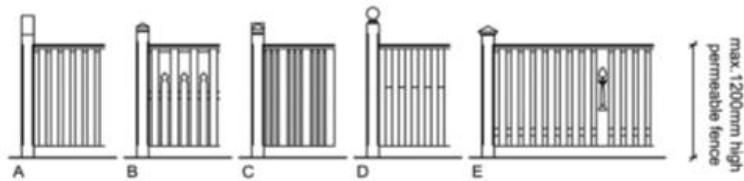
Open Picket Fencing Examples

- A Simple pointed picket
- B Alternating picket shape and height
- C Castellated
- D Shaped tops
- E Alternating picket width (particular example more typical of California Bungalow)



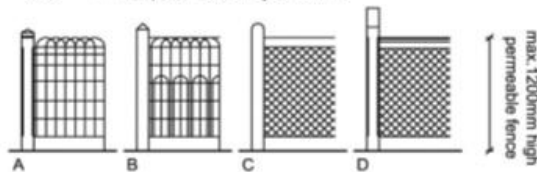
Closed Picket Fencing Examples

- A Simple
- B Alternating picket shape and height
- C Alternating picket width
- D Closed picket lower, open picket upper.
- E Wider picket with decorative cut out (particular example more typical of California Bungalow)

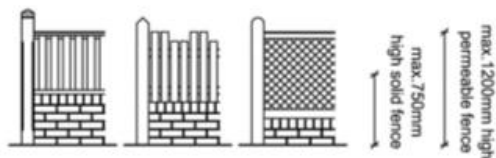


Wire Fencing Examples

- A&B Woven wire with timber posts and rails
- C&D Timber post, rail and cyclone wire



Masonry and Timber Fencing Examples



LOCAL PLANNING POLICY: CHARACTER AREAS AND HERITAGE AREAS



APPENDIX 2: HARLEY STREET HERITAGE AREA GUIDELINES

These guidelines are to be read in conjunction with the City’s Policy 7.5.15 – Character Retention Areas and Heritage Areas.



Figure 1: Harley Street Heritage Area

1. PURPOSE

These guidelines have been adopted for the purpose of preserving and enhancing the established neighbourhood character and amenity of Harley Street, while allowing for new development that meets the changing needs of the community.

The guidelines:

1. Provide a comprehensive basis for the control of all development within Harley Street including new development and additions/alterations to existing development;
2. Replace the deemed to comply requirements and/or provide additional deemed to comply requirements in relation to certain elements of the R-Codes.

2. STATEMENT OF HERITAGE SIGNIFICANCE

Harley Street has moderate aesthetic value through its dominant display of single storey residences constructed in the Federation style of architecture.

LOCAL PLANNING POLICY: CHARACTER AREAS AND HERITAGE AREAS



Harley Street has moderate historic value as an almost complete example of a 19th century streetscape, with the residences that were predominantly built in the late 1890s -1910s. It provides a good and rare historic record of the accommodation of people in this period.

Harley Street demonstrates a unified and cohesive physical form in the public realm. The overall form, style, height, setback and selection of materials of the historic dwellings contribute to the uniformity of the streetscapes, providing a coherent character with varied levels of intactness.

Harley Street contains a good representation of the wide variety of building design applied to the inner city residential areas during the Gold Rush period of 1891 to 1919. This includes substantial single residential dwellings with individual architectural detail, modest single residential dwellings, semi-detached and terraced dwellings. All these styles are represented in Harley Street, and although alterations have been undertaken to some of the dwellings, and some new replacement development has occurred in the 1980s, the streetscape is largely consistent with the styles of the Gold Boom period and construction applied during this time.

Overall, Harley Street is a highly intact example of late nineteenth to early twentieth century residential development comprising fine examples of modest single storey dwellings constructed in the Federation period of architecture.

3. RECORD OF PLACES OF HERITAGE SIGNIFICANCE

Property Address	Constructed (circa)	Architectural style ¹	Level of Significance
1A-1C Harley	c.1988	Post-war Conventional Suburban Style	No contribution
2 Harley	c.2017	Contemporary	No contribution
3 Harley	c.1898	Federation Bungalow	Moderate contribution
4 Harley	c.1914	Federation Bungalow	Moderate contribution
6 Harley	c.1900	Federation Queen Anne	Moderate contribution
7, 9, 11 & 13 Harley	c.1898	Federation Italianate	Moderate contribution
10 Harley	c.1905	Federation Queen Anne	Moderate contribution
14 Harley	c.2017	Contemporary	No contribution
15A & 15B Harley	c.1982	Reproduction of Federation Terrace	No contribution
16 Harley	c.1908	Federation Queen Anne	Moderate contribution
17 Harley	c.1900	Federation Bungalow	Moderate contribution
19 Harley	c.1900	Federation Bungalow	Moderate contribution
20 Harley	c.1898	Federation Bungalow	Moderate contribution
21 Harley	c.1898	Federation Queen Anne	Moderate contribution
22 Harley	c.1899	Federation Bungalow	Moderate contribution
23 Harley	c.1910	Federation Queen Anne	Moderate contribution
24 Harley	c.1898	Federation Bungalow	Moderate contribution
25 Harley	c.1903	Federation Queen Anne	Moderate contribution
27 Harley	c.1905	Federation Bungalow	Moderate contribution
28 Harley	c.1898	Federation Queen Anne	Moderate contribution
30 Harley	c.1988	Post-war Conventional Suburban Style	No contribution
31 Harley	c.1908	Federation Bungalow	Moderate contribution
32 Harley	c.1900	Federation Bungalow	Moderate contribution
33 Harley	c.1920	Federation Bungalow with Inter War California Bungalow elements	Moderate contribution

¹ The architectural style applied to dwellings below are based on those outlined in *Identifying Australian Architecture* by Apperly, Irving and Reynolds and the City of Vincent Housing Style Guide.

LOCAL PLANNING POLICY: CHARACTER AREAS AND HERITAGE AREAS



Property Address	Constructed (circa)	Architectural style ¹	Level of Significance
36 Harley	c.1905	Federation Bungalow	Moderate contribution
38 Harley	c.1905	Federation Bungalow	Moderate contribution
39 Harley	c.1898	Federation Bungalow	Moderate contribution

4. HARLEY STREET LOCAL HOUSING OBJECTIVES

- Retention and conservation of the original Federation style dwellings;
- Protection and enhancement of existing streetscape character;
- Retention of the visual character of late nineteenth to early twentieth century residential development;
- Encourage a high standard of architectural and sustainable design solutions for additions to existing development and new development;
- Additions to existing development and new development is appropriately set back so as to maintain the visual prominence of the single storey streetscape when viewed from Harley Street;
- New development is to respond appropriately to the surrounding street context through:
 - consistent scale and bulk in relation to the original street pattern, maintaining front and side setback patterns;
 - built form that incorporates consistent physical built form elements without the requirement to mimic the style of the original character dwellings;
- The reinstatement and reconstruction of missing design elements to original building facades such as a timber verandahs, decorative timber gables and the removal of render from original brickwork; and site features such as landscaping and front fences;
- Maintain the absence of and promote the removal of visually intrusive car storage structures and spaces and vehicular crossovers to the primary streetscape; and
- Maintain an open atmosphere of street frontage by ensuring front boundary fences are low and/or visually permeable.

5. DEVELOPMENT GUIDELINES FOR ALL DEVELOPMENT

Local Housing Objectives <i>Pursuant to clause 7.3.1 (b) of the R-Codes, the following Local Housing Objectives augment or add to the listed sections of the R-Codes. For all development that is not subject to the R-Codes, the following apply as Design Principles.</i>			Deemed to Comply <i>Pursuant to clause 7.3.1 (a) of the R-Codes, the following provisions replace the Deemed to Comply requirements in the listed sections of the R-Codes. For all development that is not subject to the R-Codes, the following apply as Deemed-to-Comply provisions.</i>		
Street Setbacks					
Augment 5.1.2 P2.1	Augment 6.1.3 P3	Dwellings should not detract from the streetscape by being set back too close or too far from the front boundary when compared with adjacent properties and the predominant streetscape character.	Replace 5.1.2 C2.1	Replace 6.1.3 C3.1	Ground floor street setbacks to be an average of the two directly adjoining properties on either side of the proposed development. First floor development shall not be located within 10 meters of the primary street boundary; or First floor development shall not be visible from Harley Street when measured in accordance with 'Figure 2 – Line of Sight'.
New 5.1.2 P2.3	New 6.1.3 P3.1	First floor development is to be adequately setback to maintain the predominant single storey appearance of the streetscape.			

LOCAL PLANNING POLICY: CHARACTER AREAS AND HERITAGE AREAS



Local Housing Objectives			Deemed to Comply										
Pursuant to clause 7.3.1 (b) of the R-Codes, the following Local Housing Objectives augment or add to the listed sections of the R-Codes. For all development that is not subject to the R-Codes, the following apply as Design Principles.			Pursuant to clause 7.3.1 (a) of the R-Codes, the following provisions replace the Deemed to Comply requirements in the listed sections of the R-Codes. For all development that is not subject to the R-Codes, the following apply as Deemed-to-Comply provisions.										
Lot Boundary Setbacks													
Augment 5.1.3 P3.1	Augment 6.1.4 P4.1	Reduce impacts of building bulk on adjoining properties by maintaining a setback similar to any adjoining properties or the predominant development context while also complying with relevant overshadowing and visual privacy requirements.											
Building Height													
Augment 5.1.6 P6	Augment 6.1.2 P2	<p>Building height that creates no adverse impact on the amenity of adjoining properties or the streetscape by maintaining similar features of adjoining properties or the streetscape in terms of scale and proportions.</p> <p>The plate height of new dwellings, particularly the portions in view from the street, should approximate the street's typical wall plate height to avoid an under scaled squat appearance.</p> <p><i>Note: The plate heights on Harley Street are typically around 40 courses, usually starting above limestone footings equal to the internal floor level.</i></p>	Replace 5.1.6 C6	Replace 6.1.2 C2	<p>The maximum height of a dwelling is to be 2 storeys and comply with the following measurements:</p> <table border="1"> <thead> <tr> <th>Element</th> <th>Max allowable Heights for Two Storey Dwellings</th> </tr> </thead> <tbody> <tr> <td>Top of external wall (roof above)</td> <td>7 metres</td> </tr> <tr> <td>Top of external wall (concealed roof)</td> <td>8 metres</td> </tr> <tr> <td>Top of pitched roof</td> <td>10 metres</td> </tr> </tbody> </table>	Element	Max allowable Heights for Two Storey Dwellings	Top of external wall (roof above)	7 metres	Top of external wall (concealed roof)	8 metres	Top of pitched roof	10 metres
Element	Max allowable Heights for Two Storey Dwellings												
Top of external wall (roof above)	7 metres												
Top of external wall (concealed roof)	8 metres												
Top of pitched roof	10 metres												
			New 5.1.6 C6.1	New 6.1.2 C2.1	<p>Loft additions will be contained wholly within the roof space and where no visible change is made to the dwelling's appearance from the street.</p> <p>The addition of front facing dormer windows and gables to lofts will cause lofts to be assessed as a storey for the purpose of this policy.</p>								

LOCAL PLANNING POLICY: CHARACTER AREAS AND HERITAGE AREAS



Local Housing Objectives <i>Pursuant to clause 7.3.1 (b) of the R-Codes, the following Local Housing Objectives augment or add to the listed sections of the R-Codes. For all development that is not subject to the R-Codes, the following apply as Design Principles.</i>			Deemed to Comply <i>Pursuant to clause 7.3.1 (a) of the R-Codes, the following provisions replace the Deemed to Comply requirements in the listed sections of the R-Codes. For all development that is not subject to the R-Codes, the following apply as Deemed-to-Comply provisions.</i>		
Vehicular Access					
Augment 5.3.5 P5.1	Augment 6.3.5 P5	No crossovers to Harley Street unless the property has no other vehicular access opportunities.			
Setback of Garages and Carports					
Augment 5.2.1	Augment 6.3.4	Maintain the absence of visually intrusive car storage facilities within the streetscape.	Replace 5.2.1 C1.1, C1.2 and C1.5		Carports, garages or hardstand car bays are to be located at the rear of the property where ROW access is available.
Street Surveillance					
Augment 5.2.3 P3	Augment 6.2.1 P1.1	Buildings to be designed to encourage active use and actual surveillance of the front yard by including verandahs, porches or Outdoor Living Areas and by including habitable rooms at the front of the dwelling.	Replace 5.2.3 C3.1	Replace 6.2.1 C1.1	Ensure a front verandah is incorporated into the façade of new dwellings (at a minimum of 50% of the width of the front facade) with a useable minimum depth of 1.8 metres.
			Replace 5.2.3 C3.2	Replace 6.2.1 C1.2	Incorporate habitable rooms to the front of the development with generous openings to provide street engagement and passive surveillance to the street.
Street Walls and Fences					
Augment 5.2.4 P4	Augment 6.2.2 P2	Ensure front boundary fences enhance the streetscape by being designed in the predominant style of the street and are low enough to retain views to dwellings and front gardens.	Replace 5.2.4 C4	Replace 6.2.2 C2	a) The maximum height of new fences facing the street is to be 1.2 metres above the adjacent footpath level; b) The maximum height of any solid portion of a new fence is to be 500mm above the adjacent footpath level. The remaining portion is to be a minimum of 40% visually permeable; c) The maximum height of fence piers with decorative capping to be 1.8 metres above the adjacent footpath level; and d) Maximum width of piers to be 470mm; or e) The maximum height of new fences facing the street is to

LOCAL PLANNING POLICY: CHARACTER AREAS AND HERITAGE AREAS



Local Housing Objectives <i>Pursuant to clause 7.3.1 (b) of the R-Codes, the following Local Housing Objectives augment or add to the listed sections of the R-Codes. For all development that is not subject to the R-Codes, the following apply as Design Principles.</i>			Deemed to Comply <i>Pursuant to clause 7.3.1 (a) of the R-Codes, the following provisions replace the Deemed to Comply requirements in the listed sections of the R-Codes. For all development that is not subject to the R-Codes, the following apply as Deemed-to-Comply provisions.</i>		
					be 1.8 metres above the adjacent footpath level; f) The maximum height of any solid portion of a new fence is to be 750mm above the adjacent footpath level. The remaining portion is to be a minimum of 80% visually permeable; and g) The maximum height of fence piers with decorative capping to be 2.0 metres above the adjacent footpath level; or h) Fencing types as illustrated in the diagrams below are permitted. Variations to the examples indicated below may be supported where it can be demonstrated that they are compatible with the existing fence styles in the street.
General Building Design					
New 5.4.6 P6.1	New 6.2.4 P4.3	The roof of a building is to be designed so that it is similar to the existing streetscape character.	New 5.4.6 C6.1	Pursuant to 6.2.4 C4	Roof pitch of ground and upper storeys of between 30 and 40 degrees, with 35 to 45 degree pitches to gables where it can be viewed from the street.
New 5.4.6 P6.2	New 6.2.4 P4.4	New buildings must respond to the prevailing surrounding character and ensure unsympathetic contrasts in scale, mass and materials are avoided.	New 5.4.6 C6.2	Pursuant to 6.2.4 C4	New dwellings' floor levels match, or mediate between, properties on both sides of the proposed dwelling. <i>Floor levels of the original dwellings in Harley Street are raised approximately 300 - 500mm above footpath level, which assists to define the verandah area and provide additional privacy as views into front rooms are obscured.</i>
New 5.4.6 P6.3	New 6.2.4 P4.5	Each street facing window should have a style that suits the predominant character of the street and the architectural style of the proposed dwelling.	New 5.4.6 C6.3	Pursuant to 6.2.4 C4	Street facing windows have a height of at least 1.6 times their width.

LOCAL PLANNING POLICY: CHARACTER AREAS AND HERITAGE AREAS



Local Housing Objectives <i>Pursuant to clause 7.3.1 (b) of the R-Codes, the following Local Housing Objectives augment or add to the listed sections of the R-Codes. For all development that is not subject to the R-Codes, the following apply as Design Principles.</i>			Deemed to Comply <i>Pursuant to clause 7.3.1 (a) of the R-Codes, the following provisions replace the Deemed to Comply requirements in the listed sections of the R-Codes. For all development that is not subject to the R-Codes, the following apply as Deemed-to-Comply provisions.</i>		
New 5.4.6 P6.4	New 6.2.4 P4.6	Additions visible from the street should be compatible with and respectful of the existing dwelling and the predominant character of the existing dwellings within the street.	New 5.4.6 C6.4	Pursuant to 6.2.4 C4	Additions to existing buildings will only be supported where they are located behind the original facade and set back so that the existing front building and roof form remains the dominant feature to the street.
Demolition					
Applications for development approval should maintain the front façade of a contributing dwelling.			Applications for development approval that retain the original dwelling are considered acceptable.		

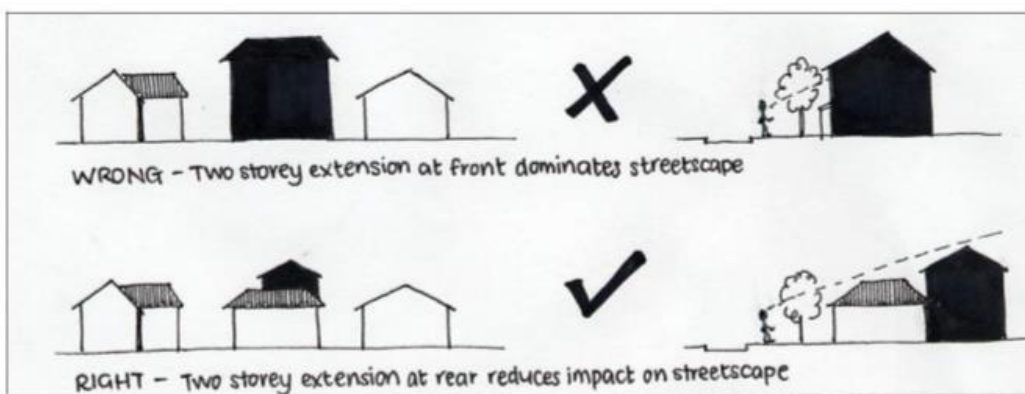


Figure 2 – Line of Sight

LOCAL PLANNING POLICY: CHARACTER AREAS AND HERITAGE AREAS



6. RECOMMENDED FENCING STYLES FOR HARLEY STREET



LOCAL PLANNING POLICY: CHARACTER AREAS AND HERITAGE AREAS



APPENDIX 3: CARR STREET GUIDELINES

These guidelines are to be read in conjunction with the City's Policy 7.5.15 – Character Retention Areas and Heritage Areas.



Figure 1 – Carr Street Character Retention Area

1. PURPOSE

These guidelines have been adopted for the purpose of preserving and enhancing the established neighbourhood character and amenity of Carr Street, while allowing for new development that meets the changing needs of the community.

The guidelines:

1. Provide a basis for the control of all development within Carr Street including new dwellings and additions/alterations to existing buildings;
2. Replace the deemed to comply requirements and/or provide additional deemed to comply requirements in relation to certain elements of the R-Codes.

2. CARR STREET LOCAL HOUSING OBJECTIVES

- Retention and conservation the original Federation and Interwar Bungalow style dwellings;
- Protection and enhancement of existing streetscape character;
- Retention of the visual character of late nineteenth to early twentieth century residential development;
- Encourage a high standard of architectural and sustainable design solutions for additions to existing buildings and the development of new buildings;
- Additions to existing buildings and new dwellings are appropriately setback so as to maintain the visual prominence of the single storey streetscape when viewed from Carr Street;
- New development is to respond appropriately to the surrounding street context through:

LOCAL PLANNING POLICY: CHARACTER AREAS AND HERITAGE AREAS



- consistent scale and bulk in relation to the original street pattern, maintaining front and side setback patterns;
- built form that incorporates consistent physical built form elements without the requirement to mimic the style of the original character dwellings;
- The reinstatement and reconstruction of missing design elements to original building facades such as a timber verandah, decorative timber gables and the removal of paint and render from original brickwork;
- Maintain the absence of visually intrusive car storage structures and spaces and vehicular crossovers to the primary streetscape; and
- Maintain an open street frontage by ensuring front boundary fences are low and/or visually permeable.

3. DEVELOPMENT GUIDELINES FOR ALL BUILDINGS

Local Housing Objectives <i>Pursuant to clause 7.3.1 (b) of the R-Codes, the following Local Housing Objectives augment or add to the listed sections of the R-Codes. For all development that is not subject to the R-Codes, the following apply as Design Principles.</i>			Deemed to Comply <i>Pursuant to clause 7.3.1 (a) of the R-Codes, the following provisions replace the Deemed to Comply requirements in the listed sections of the R-Codes. For all development that is not subject to the R-Codes, the following apply as Deemed-to-Comply provisions.</i>		
Street Setbacks					
Augment 5.1.2 P2.1	Augment 6.1.3 P3	Dwellings should not detract from the streetscape by being set back too close or too far from the front boundary when compared with adjacent properties or the predominant streetscape character.	Replace 5.1.2 C2.1	Replace 6.1.3 C3.1	Ground floor street setbacks to be an average of the two directly adjoining properties on either side of the proposed development. First floor development shall not be located within 4 meters of the ground floor primary street setback; or First floor development shall not be visible from Carr Street when measured in accordance with 'Figure 2 – Line of Sight'.
New 5.1.2 P2.3	New 6.1.3 P3.1	First floor development is to be adequately setback to maintain the predominant single storey appearance of the streetscape.			
Lot Boundary Setbacks					
Augment 5.1.3 P3.1	Augment 6.1.4 P4.1	Reduce impacts of building bulk on adjoining properties by maintaining a setback similar to any adjoining properties or the predominant development context while also complying with relevant overshadowing and visual privacy requirements.			

LOCAL PLANNING POLICY: CHARACTER AREAS AND HERITAGE AREAS



Local Housing Objectives <i>Pursuant to clause 7.3.1 (b) of the R-Codes, the following Local Housing Objectives augment or add to the listed sections of the R-Codes. For all development that is not subject to the R-Codes, the following apply as Design Principles.</i>			Deemed to Comply <i>Pursuant to clause 7.3.1 (a) of the R-Codes, the following provisions replace the Deemed to Comply requirements in the listed sections of the R-Codes. For all development that is not subject to the R-Codes, the following apply as Deemed-to-Comply provisions.</i>										
Building Height													
Augment 5.1.6 P6	Augment 6.1.2 P2	Building height that creates no adverse impact on the amenity of adjoining properties or the streetscape by maintaining similar features of adjoining properties or the streetscape in terms of scale and proportions. The plate height of new dwellings, particularly the portions in view from the street, should approximate the street's typical wall plate height to avoid an under scaled squat appearance.	Replace 5.1.6 C6	Replace 6.1.2 C2	Minimum building height fronting primary street: 3m Maximum building height: <table border="1" style="margin-left: 20px;"> <thead> <tr> <th>Element</th> <th>Max allowable Heights for Two Storey Dwellings</th> </tr> </thead> <tbody> <tr> <td>Top of external wall (roof above)</td> <td>7 metres</td> </tr> <tr> <td>Top of external wall (concealed roof)</td> <td>8 metres</td> </tr> <tr> <td>Top of pitched roof</td> <td>10 metres</td> </tr> </tbody> </table>	Element	Max allowable Heights for Two Storey Dwellings	Top of external wall (roof above)	7 metres	Top of external wall (concealed roof)	8 metres	Top of pitched roof	10 metres
Element	Max allowable Heights for Two Storey Dwellings												
Top of external wall (roof above)	7 metres												
Top of external wall (concealed roof)	8 metres												
Top of pitched roof	10 metres												
New 5.1.6 P6.1		Windows and gables are consistent with the existing dwellings in the street.	New 5.1.6 C6.1	New 6.1.2 C2.1	Loft additions where the development is contained wholly within the roof space and where there is no visible change to the dwellings appearance from the street.								
Setback of Garages and Carports													
Augment 5.2.1 P5.1	Augment 6.3.4	Maintaining an absence of car parking facilities within the streetscape.	Replace 5.2.1 C1.1, C1.2 and C1.5		Carports, garages or hardstand car bays are to be located at the rear of the property where ROW access is available. Carports setback 500mm behind the front setback line where access is from the Primary Street.								
Street Surveillance													
Augment 5.2.3 P3	Augment 6.2.1 P1.1	Buildings to be designed to encourage active use and actual surveillance of the front yard by including verandahs, porches or Outdoor Living Areas and by including habitable rooms at the front of the dwelling.	Replace 5.2.3 C3.1	Replace 6.2.1 C1.1	A front verandah is incorporated into the façade of new dwellings (at a minimum 50% of the width of the front façade) with a useable minimum depth of 1.8 metres.								

LOCAL PLANNING POLICY: CHARACTER AREAS AND HERITAGE AREAS



Local Housing Objectives <i>Pursuant to clause 7.3.1 (b) of the R-Codes, the following Local Housing Objectives augment or add to the listed sections of the R-Codes. For all development that is not subject to the R-Codes, the following apply as Design Principles.</i>			Deemed to Comply <i>Pursuant to clause 7.3.1 (a) of the R-Codes, the following provisions replace the Deemed to Comply requirements in the listed sections of the R-Codes. For all development that is not subject to the R-Codes, the following apply as Deemed-to-Comply provisions.</i>		
Street Walls and Fences					
Augment 5.2.4 P4	Augment 6.2.2 P2	Ensure front boundary fences enhance the streetscape by being designed in the predominant style of the street and are low enough to retain views to dwellings and front gardens.	Replace 5.2.4 C4	Replace 6.2.2 C2	a) The maximum height of new fences facing the street is to be 1.8 metres above natural ground level; b) The maximum height of any solid portion of a new fence is to be 750mm above natural ground level. The remaining portion is to be a minimum of 80% visually permeable; and c) The maximum height of fence piers with decorative capping to be 2.0 metres above natural ground level.
General Building Design					
New 5.4.6 P6.1	New 6.2.4 P4.3	The roof of a building is to be designed so that it is similar to the existing streetscape character.	New 5.4.6 C6.1	Pursuant to 6.2.4 C4	Roof pitch of ground and upper storeys of between 30 and 40 degrees, with 35 - 45 degree pitches to gables where it can be viewed from the street.
New 5.4.6 P6.2	New 6.2.4 P4.4	New buildings must respond to the prevailing surrounding character and ensure unsympathetic contrasts in scale mass and materials are avoided.	New 5.4.6 C6.2	Pursuant to 6.2.4 C4	New dwellings' floor levels match, or mediate between, properties on both sides of the proposed dwelling. <i>Note: Floor levels of the original dwellings in Carr Street are raised approximately 300 - 500mm above footpath level, which assists to define the verandah area and provide additional privacy as views into front rooms are obscured.</i>
New 5.4.6 P6.3	New 6.2.4 P4.5	Each street facing window should have a style that suits the predominant character of the street and the architectural style of the proposed dwelling.	New 5.4.6 C6.3	Pursuant to 6.2.4 C4	Street facing windows have a height of at least 1.6 times their width.
New 5.4.6 P6.4	New 6.2.4 P4.6	Additions visible from the street should be compatible with and respectful of the existing dwelling and the predominant character of the original dwellings within the street.	New 5.4.6 C6.4	Pursuant to 6.2.4 C4	Additions to existing buildings will only be supported where they are located behind the original façade and set back so that the original building and roof form remains the dominant feature to the street.

LOCAL PLANNING POLICY: CHARACTER AREAS AND HERITAGE AREAS



Local Housing Objectives <i>Pursuant to clause 7.3.1 (b) of the R-Codes, the following Local Housing Objectives augment or add to the listed sections of the R-Codes. For all development that is not subject to the R-Codes, the following apply as Design Principles.</i>	Deemed to Comply <i>Pursuant to clause 7.3.1 (a) of the R-Codes, the following provisions replace the Deemed to Comply requirements in the listed sections of the R-Codes. For all development that is not subject to the R-Codes, the following apply as Deemed-to-Comply provisions.</i>
Demolition	
Application for development approval should maintain the front façade of the original dwelling.	Applications for development approval retain the original dwelling. ²

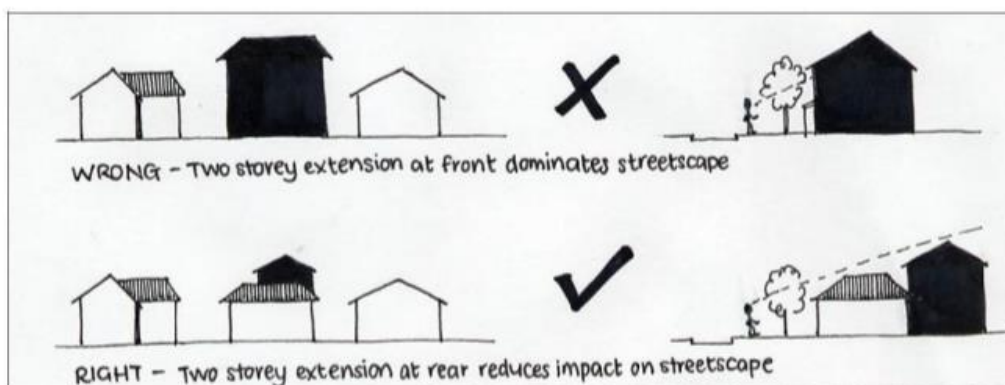


Figure 2 – Line of sight

² Schedule 2, Part 7, Clause 61(1)(e) in the *Planning and Development (Local Planning Schemes) Regulations 2015* does not require a development application for the demolition of a single house, ancillary dwelling, outbuilding, external fixture, boundary wall or fence, patio, pergola, veranda, garage, carport or swimming pool where the structure is not affected by heritage legislation. C7.4 has been included as the requirement in the Regulations may be removed and the provision could then be implemented.

LOCAL PLANNING POLICY: CHARACTER AREAS AND HERITAGE AREAS



APPENDIX 4: JANET STREET HERITAGE AREA GUIDELINES

These guidelines are to be read in conjunction with the City’s Policy 7.5.15 – Character Retention Areas and Heritage Areas.



Figure 1 – Janet Street Heritage Area

1. PURPOSE

These guidelines have been adopted for the purpose of preserving and enhancing the established neighbourhood character and amenity of Janet Street, while allowing for new development that meets the changing needs of the community.

The guidelines:

1. Provide a basis for the control of all development within the Janet Street Character Retention Area including new buildings and additions/alterations to existing buildings;
2. Replace the deemed to comply requirements and/or provide additional deemed to comply requirements in relation to certain elements of the R-Codes.

2. STATEMENT OF HERITAGE SIGNIFICANCE

Janet Street has moderate aesthetic value through its dominant display of single storey residences constructed in the Federation and Interwar style of architecture.

Janet Street has moderate historic value as an almost intact and cohesive example of a 20th century streetscape, with the residences that were predominantly built in the 1920’s. It provides a good and rare historic record of the accommodation of people in this period.

Janet Street demonstrates a cohesive physical form in the public realm. The overall form, style, height, setback and selection of materials of the historic dwellings contribute to the uniformity of the streetscapes, providing a coherent character with varied levels of intactness.

LOCAL PLANNING POLICY: CHARACTER AREAS AND HERITAGE AREAS



3. RECORD OF PLACES

Property Address	Constructed (circa)	Architectural style	Level of Significance
1 Janet St	c1922	Interwar bungalow	Moderate Contribution
2 Janet St	c1924	Federation bungalow	Moderate Contribution
3 Janet St	c1922	Interwar bungalow	Moderate Contribution
4 Janet St	c1923	Federation bungalow	Moderate Contribution
5 Janet St	c1922	Interwar bungalow	Moderate Contribution
6 Janet St	c1923	Federation bungalow	Moderate Contribution
7 Janet St	c1922	Interwar bungalow	Moderate Contribution
8 Janet St	c1923	Interwar bungalow	Moderate Contribution
9 Janet St	c1921	Interwar bungalow	Moderate Contribution
10 Janet St	c1923	Federation bungalow	Moderate Contribution
11 Janet St	c1921	Interwar bungalow	Moderate Contribution
12 Janet St	c2009	Contemporary dwelling	No Contribution
13 Janet St	c1921	Interwar bungalow	Moderate Contribution
14 Janet St	c1923	Federation bungalow	Moderate Contribution
15 Janet St	c1923	Interwar bungalow	Moderate Contribution

4. JANET STREET LOCAL HOUSING OBJECTIVES

- Retention and conservation of the original Federation style dwellings;
- Protection and enhancement of the existing streetscape character;
- Retention of the visual character of late nineteenth to early twentieth century residential development;
- Encouragement of a high standard of architectural and sustainable design solutions for additions to existing buildings and the development of new buildings;
- Ensuring additions to existing buildings and new dwellings are appropriately setback so as to maintain the visual prominence of the single storey streetscape when viewed from Janet Street;
- New development is appropriate in scale and bulk in relation to the original street pattern, maintaining front and side setback patterns;
- The reinstatement and reconstruction of missing design elements to original building facades such as a timber verandah, decorative timber gables and the removal of render from original brickwork; and site features such as landscaping and front fences;
- Maintain the absence of and promote the removal of visually intrusive car storage structures and spaces, and vehicular crossovers to the primary streetscape; and
- Maintain an open atmosphere of street frontage by ensuring front boundary fences are low and/or visually permeable.

LOCAL PLANNING POLICY: CHARACTER AREAS AND HERITAGE AREAS



5. DEVELOPMENT GUIDELINES FOR ALL BUILDINGS

Local Housing Objectives <i>Pursuant to clause 7.3.1 (b) of the R-Codes, the following Local Housing Objectives augment or add to the listed sections of the R-Codes. For all development that is not subject to the R-Codes, the following apply as Design Principles.</i>			Deemed to Comply <i>Pursuant to clause 7.3.1 (a) of the R-Codes, the following provisions replace the Deemed to Comply requirements in the listed sections of the R-Codes. For all development that is not subject to the R-Codes, the following apply as Deemed-to-Comply provisions.</i>										
Street Setbacks													
Augment 5.1.2 P2.1	Augment 6.1.3 P3	Dwellings should not detract from the streetscape by being set back too close or too far from the front boundary when compared with adjacent properties or the predominant streetscape character.	Replace 5.1.2 C2.1	Replace 6.1.3 C3.1	Ground floor street setbacks to be an average of the two directly adjoining properties on either side of the proposed development. First floor development shall not be located within 4 meters of the ground floor primary street setback; or First floor development shall not be visible from Janet Street when measured in accordance with 'Figure 2 – Line of Sight'.								
New 5.1.2 P2.3	New 6.1.3 P3.1	First floor development is to be adequately setback to maintain the predominant single storey appearance of the streetscape.											
Lot Boundary Setbacks													
Augment 5.1.3 P3.1	Augment 6.1.4 P4.1	Reduce impacts of building bulk on adjoining properties by maintaining a setback similar to any adjoining properties or the predominant development context while also complying with relevant overshadowing and visual privacy requirements.											
Building Height													
Augment 5.1.6 P6.1	Augment 6.1.2 P2	Building height that creates no adverse impact on the amenity of adjoining properties or the streetscape by maintaining similar features of adjoining properties or the streetscape in terms of scale and proportions. The plate height of new dwellings, particularly the portions in view from the street, should approximate the street's typical wall plate height to avoid an under scaled squat appearance.	Replace 5.1.6 C6	Replace 6.1.2 C2	Minimum building height fronting primary street: 3m Maximum building height: <table border="1" style="width: 100%; border-collapse: collapse;"> <thead> <tr> <th style="width: 50%;">Element</th> <th style="width: 50%;">Max allowable Heights for Two Storey Dwellings</th> </tr> </thead> <tbody> <tr> <td>Top of external wall (roof above)</td> <td>7 metres</td> </tr> <tr> <td>Top of external wall (concealed roof)</td> <td>8 metres</td> </tr> <tr> <td>Top of pitched roof</td> <td>10 metres</td> </tr> </tbody> </table>	Element	Max allowable Heights for Two Storey Dwellings	Top of external wall (roof above)	7 metres	Top of external wall (concealed roof)	8 metres	Top of pitched roof	10 metres
Element	Max allowable Heights for Two Storey Dwellings												
Top of external wall (roof above)	7 metres												
Top of external wall (concealed roof)	8 metres												
Top of pitched roof	10 metres												

LOCAL PLANNING POLICY: CHARACTER AREAS AND HERITAGE AREAS



Local Housing Objectives <i>Pursuant to clause 7.3.1 (b) of the R-Codes, the following Local Housing Objectives augment or add to the listed sections of the R-Codes. For all development that is not subject to the R-Codes, the following apply as Design Principles.</i>			Deemed to Comply <i>Pursuant to clause 7.3.1 (a) of the R-Codes, the following provisions replace the Deemed to Comply requirements in the listed sections of the R-Codes. For all development that is not subject to the R-Codes, the following apply as Deemed-to-Comply provisions.</i>		
New 5.1.6 P6.1		Windows and gables are consistent with the existing dwellings in the street.	New C6.1	New 6.1.2 C2.1	Loft additions where the development is contained wholly within the roof space and where there is no visible change to the dwellings appearance from the street.
Setback of Garages and Carports					
Augment 5.2.1 P5.1		Maintaining an absence of car parking facilities within the streetscape.	Replace 5.2.1 C1.1, C1.2 and C1.5		Carports, garages or hardstand car bays are to be located at the rear of the property where ROW access is available. Carports setback 500mm behind the front setback line where access is from the Primary Street.
Street Surveillance					
Augment 5.2.3 P3	Augment 6.2.1 P1.1	Buildings to be designed to encourage active use and actual surveillance of the front yard by including verandahs, porches or Outdoor Living Areas and by including habitable rooms at the front of the dwelling.	Replace 5.2.3 C3.1	Replace 6.2.1 C1.1	A front verandah is incorporated into the façade of new dwellings (at a minimum 50% of the width of the front façade) with a useable minimum depth of 1.8 metres.
Street Walls and Fences					
Augment 5.2.4 P4	Augment 6.2.2 P2	Ensure front boundary fences enhance the streetscape by being designed in the predominant style of the street and are low enough to retain views to dwellings and front gardens.	Replace 5.2.4 C4	Replace 6.2.2 C2	a) The maximum height of new fences facing the street is to be 1.2 metres above the adjacent footpath level; b) The maximum height of any solid portion of a new fence is to be 500mm above the adjacent footpath level. The remaining portion is to be a minimum of 40% visually permeable; c) The maximum height of fence piers with decorative capping to be 1.8 metres above the adjacent footpath level; and d) Maximum width of piers to be 470mm or e) The maximum height of new fences facing the street is to be

LOCAL PLANNING POLICY: CHARACTER AREAS AND HERITAGE AREAS



Local Housing Objectives			Deemed to Comply		
Pursuant to clause 7.3.1 (b) of the R-Codes, the following Local Housing Objectives augment or add to the listed sections of the R-Codes. For all development that is not subject to the R-Codes, the following apply as Design Principles.			Pursuant to clause 7.3.1 (a) of the R-Codes, the following provisions replace the Deemed to Comply requirements in the listed sections of the R-Codes. For all development that is not subject to the R-Codes, the following apply as Deemed-to-Comply provisions.		
					1.8 metres above the adjacent footpath level; f) The maximum height of any solid portion of a new fence is to be 750mm above the adjacent footpath level. The remaining portion is to be a minimum of 80% visually permeable; and g) The maximum height of fence piers with decorative capping to be 2.0 metres above the adjacent footpath level.
General Building Design					
New 5.4.6 P6.1	New 6.2.4 P4.3	The roof of a building is to be designed so that it is similar to the existing streetscape character.	New 5.4.6 C6.1	Pursuant to 6.2.4 C4	Roof pitch between 30 and 40 degrees, with 35 - 45 degree pitches to gables where it can be viewed from the street.
New 5.4.6 P6.2	New 6.2.4 P4.4	New buildings must respond to the prevailing surrounding character and ensure unsympathetic contrasts in scale mass and materials are avoided.	New 5.4.6 C6.2	Pursuant to 6.2.4 C4	New dwellings' floor levels match, or mediate between, properties on both sides of the proposed dwelling. <i>Note: Floor levels of the original dwellings in Janet Street are raised approximately 300mm above footpath level, which assists to define the verandah area and provide additional privacy as views into front rooms are obscured.</i>
New 5.4.6 P6.3	New 6.2.4 P4.5	Each street facing window should have a style that suits the predominant character of the street and the architectural style of the proposed dwelling.	New 5.4.6 C6.3	Pursuant to 6.2.4 C4	Street facing windows have a height of at least 1.6 times their width.
New 5.4.6 P6.4	New 6.2.4 P4.6	Additions visible from the street should be compatible with and respectful of the existing dwelling and the predominant character of the original dwellings within the street.	New 5.4.6 C6.4	Pursuant to 6.2.4 C4	Additions to existing buildings will only be supported where they are located behind the original façade and set back so that the original building and roof form remains the dominant feature to the street.
Demolition					
Applications for development approval should maintain the front façade of a contributing dwelling.			Applications for development approval that retain the original dwelling are considered acceptable.		

LOCAL PLANNING POLICY: CHARACTER AREAS AND HERITAGE AREAS

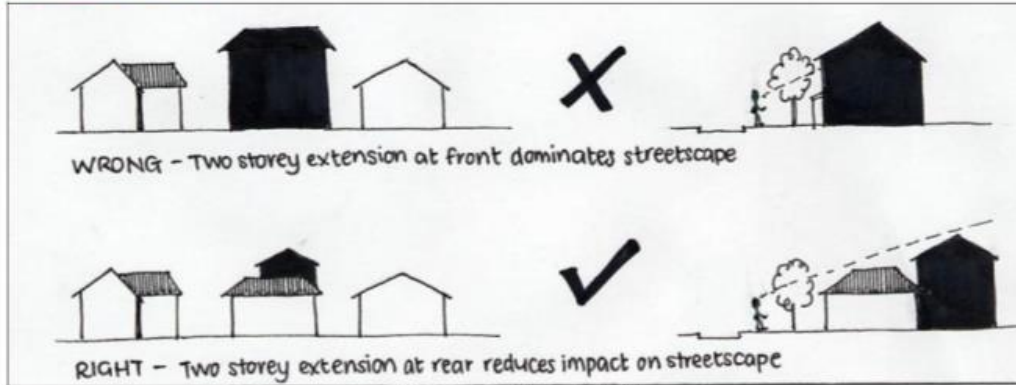


Figure 2 – Line of sight

LOCAL PLANNING POLICY: CHARACTER AREAS AND HERITAGE AREAS



APPENDIX 5 –THE BOULEVARDE AND MATLOCK STREET CHARACTER RETENTION GUIDELINES

These guidelines are to be applied to all development within the following areas:

Guideline Area	
1.	The Boulevarde – between Scarborough Beach Road and Anzac Road
2.	Matlock Street – between Anzac Road and Britannia Road

Table 1: Properties included in The Boulevarde and Matlock Street Character Retention Area

Application of the Guidelines

The Guidelines apply to development:

1. Where the dwelling is fronting the primary street within the guideline area; and
2. Is within the area that is visible from the primary street.

These guidelines are to be read in conjunction with the City’s Policy 7.5.15 – Character Retention Areas and Heritage Areas, the City’s Local Planning Scheme No. 2, the Residential Design Codes and Policy 7.1.1 – Built Form.

Statement of Character

The Guideline Area’s prevailing character is summarised as follows:

- Significantly intact examples of early twentieth century residential development comprising modest, single storey dwellings constructed during the Interwar period;
- Development comprising predominately original dwelling form and style with consistent height and selection of materials;
- A high level of retained traditional details including street facing verandas, traditional pitched roof form, chimneys, vertical window articulation and traditional building materials;
- Front setbacks that are generally consistent, reinforcing the building edge and maintaining a consistent pattern of development, allowing view lines along the fronts of dwellings;
- Front gardens are generally low and open and would traditionally have been planted with shrubs and roses, with flowerbeds or low ground cover;
- Front fences are low and or visually permeable, generally with an absence of solid, obtrusive front fences; and
- New development is generally sympathetic to the form, bulk and scale of the original dwellings.

Development Objectives:

- Retention and conservation of original dwellings;
- Protection and enhancement of the original streetscape character;
- Retention of the visual character of the early twentieth century Interwar styles of architecture;
- Encourage a high standard of architectural and sustainable design solutions for new development and additions to existing development;
- New development that is visible from the street responds appropriately and complements and complements the surrounding streetscape through:
 - consistent scale and bulk in relation to the original street pattern, maintaining front and side setback patterns; and

LOCAL PLANNING POLICY: CHARACTER AREAS AND HERITAGE AREAS



- built form that incorporates consistent physical built form elements of the prevailing character without the requirement to mimic the style of the original character dwellings.
- Development to the rear of a dwelling where not visible from the street may be contemporary in style, respecting the scale and bulk of the prevailing character;
- Maintain the absence of and promote the removal of visually intrusive car parking structures and vehicular crossovers to the primary streetscape; and
- Maintain an open atmosphere of street frontage by ensuring front boundary fences are low and/or visually permeable.

Local Housing Objectives <i>Pursuant to Clause 7.3.1(b) of the Residential Design Codes, the following Local Housing Objectives augment the Design Principles of the Residential Design Codes as specified.</i>	Deemed to Comply <i>Pursuant to Clause 7.3.1(a) of the Residential Design Codes, the following provisions replace the Deemed to Comply requirements of the Residential Design Codes as specified.</i>
1. Street Setbacks	
<i>Augments Clause 5.1.2 P2.1 and P2.2</i>	
O1.1 The setbacks of dwellings should reflect the predominant streetscape pattern and be consistent with adjacent properties.	C1.1 Ground floor primary street setbacks to be an average of the two directly adjoining properties on either side of the proposed development.
O1.2 First floor development is to be adequately setback to maintain the predominant single storey appearance of the streetscape.	C1.2 Two storey development is to be setback a minimum of 4m behind the predominant ground floor building line.
2. Lot Boundary Setbacks	
<i>Augments Clause 5.1.3 P3.1</i>	
O2.1 Reduce impacts of building bulk on adjoining properties by maintaining a setback similar to any adjoining properties or the predominant development context while also complying with relevant overshadowing and visual privacy requirements.	
3. Building Height	
<i>Augments Clause 5.1.6 P6</i>	
O3.1 Building height that creates no adverse impact on the amenity of adjoining properties or the streetscape by upholding similar features in terms of the prevailing bulk, scale and proportions of the existing streetscape.	C3.1 Dwellings shall be a maximum of two storeys and comply with the following heights: <ul style="list-style-type: none"> ● Top of external wall: 7 metres ● Top of pitched roof: 10 metres
O3.2 The wall height of new dwellings, particularly the portions in view from the street, should approximate the street's typical wall height to avoid an under scaled squat appearance.	C3.2 Loft additions must be contained wholly within the roof space and shall not result in a visible change to the dwelling's appearance from the street.
4. Garages and Carports	
<i>Augments Clause 5.2.1 P1</i>	
O4.1 Carports and garages should be located so as to maintain the absence of car parking facilities within the streetscape.	C4.1 Carports, garages or hardstand car parking bays are to be located at the rear of the property where right of way access is available.

LOCAL PLANNING POLICY: CHARACTER AREAS AND HERITAGE AREAS



<p>O4.2 Car parking facilities located within front setback areas should ensure that the predominant character elements of the dwelling are visible and unobstructed.</p>	<p>C4.2 Garages shall be setback a minimum of 500mm behind the front building line where access is from the primary street.</p>
<p>O4.3 Car parking facilities that do not unduly impact the presentation of the dwelling to the streetscape.</p>	<p>C4.3 Carports may be considered in front setback areas but only where no alternative location exists and a minimum setback of 1.5m from the primary street is maintained. Such carports shall not be fitted with any style of roller or tilt up panel door.</p>
	<p>C4.4 Where carports are considered appropriate in front setback areas, carports shall be open in style and allow an unobstructed view of the dwelling from the street.</p>
	<p>C4.5 Garages and carports must respect the existing dwellings' predominant colour, scale and materials and must be complementary and subservient to the dwelling.</p>
	<p>C4.6 Carports and garages shall have a maximum wall height of 2.7m.</p>
	<p>C4.7 Carports located within front setback areas shall have a maximum width of 5.5 metres (internal) or one-third the frontage of the lot, whichever is the lesser.</p>
<p>5. Street Surveillance</p>	
<p><i>Augments Clause 5.2.3 P3</i></p>	
<p>O5.1 Buildings to be designed to encourage active use and actual surveillance of the front yard by including verandahs, porches or outdoor living areas and by including habitable rooms at the front of the dwelling.</p>	<p>C5.1 There must be at least one habitable room incorporated into the front elevation of the dwelling.</p> <p>C5.2 Each habitable room facing the primary street must have at least one major opening with clear glazing and a clear view of the street and approach to the dwelling.</p>
<p>6. Street Walls and Fences</p>	
<p><i>Augments Clause 5.2.4 P4</i></p>	
<p>O6.1 New fences within the front setback area shall enhance the streetscape by being consistent in materials, style and colour of the original fences within the street.</p>	<p>C6.1 The maximum height of new fences within the front setback area is to be 1.2m above the adjacent footpath level;</p>
<p>O6.2 Front fences that are low and visually permeable in order to retain views to dwellings and front gardens.</p>	<p>C6.2 The maximum height of any solid portion of a new fence is to be 500mm above the adjacent footpath level. The remaining portion is to be a minimum 40% visually permeable;</p>

LOCAL PLANNING POLICY: CHARACTER AREAS AND HERITAGE AREAS



	<p>C6.3 The maximum height of fence piers with decorative capping is to be 1.8m above the adjacent footpath level; and</p> <p>C6.4 The maximum width of piers is to be 470mm.</p> <p>C6.5 The material(s) proposed include one or more of the following selected to reflect the predominate materials of fences within the Guideline Area: i. Timber pickets; or ii. Brick; or iii. Rendered masonry.</p> <p>OR</p> <p>C6.6 The maximum height of new fences within the front setback area is to be 1.8 metres above the adjacent footpath level;</p> <p>C6.7 The maximum height of any solid portion of a new fence is to be 750mm above the adjacent footpath level. The remaining portion is to be a minimum of 80% visually permeable;</p> <p>C6.8 The maximum height of fence piers with decorative capping is to be 2m above the adjacent footpath level; and</p> <p>C6.9 The maximum width of piers is to be 470mm.</p> <p>C6.10 The material(s) proposed include one or more of the following selected to reflect the predominate materials of fences within the Guideline Area: i. Timber pickets; or ii. Brick; or iii. Rendered masonry.</p>
--	---

7. General Building Design	
<i>New Local Housing Objectives as per Clause 7.3.1(b) of the Residential Design Codes</i>	
O7.1	New development is sympathetic to and complements the prevailing character, avoiding unsympathetic scale, mass and materials.
O7.2	Additions visible from the street shall be compatible with and respectful of the existing dwelling and the predominant character of the existing streetscape.
O7.3	Each street facing window should have a style that suits the predominant character of the street and the architectural style of the proposed dwelling.

LOCAL PLANNING POLICY: CHARACTER AREAS AND HERITAGE AREAS



O7.4
The materials of any new dwellings as viewed from the street shall be consistent with the prevailing character.

O7.5
The floor levels of new dwellings shall match or average the floor levels of dwellings on either side of the proposed dwelling.

O7.6
The roof pitch for new carports and additions visible from the street is to be consistent and respectful of the existing dwelling's roof pitch and, for new buildings, consistent and respectful of the prevailing character.

O7.7
Windows to the front façade of an upper storey addition shall reflect the shape and configuration of the original dwellings' windows when viewed from the primary street.

8. Landscaping

New Local Housing Objectives as per Clause 7.3.1(b) of the Residential Design Codes

O8.1
Existing trees on a site, especially mature trees, to be preserved wherever possible.

O8.2
The front setback area should be developed as a predominantly soft landscaped garden. The planting of low shrubbery and traditional open garden styles is encouraged.

CITY OF VINCENT CHARACTER STREET GUIDELINES - FLORENCE STREET, WEST PERTH

The [Florence Character Street](#) has been recognised by the community and the Council as making a positive contribution towards built character of the City. To help identify and celebrate this unique part of the City, this guideline has been put in place to guide and assist future development.

These guidelines are to be applied to development where the dwelling is fronting the primary street and/or is within an area that is visible from the primary street, within the following area:
[Nos. 4 - 53 Florence Street \(excluding No. 42\)](#)

The general objectives of development the subject of these guidelines are:

- Retention and conservation of original dwellings;
- Protection and enhancement of existing streetscape character;
- Retention of the visual character of late nineteenth to early twentieth century residential development;
- Encourage a high standard of architectural and sustainable design solutions for new development and additions to existing development;
- New development that responds appropriately and complements the surrounding streetscape through:
 - Consistent scale and bulk in relation to the original street pattern, maintaining front and side setback patterns; and
 - Built form that incorporates consistent physical built form elements without the requirement to mimic the style of the original character dwellings.
- Maintain the absence of and promote the removal of visually intrusive car parking structures and vehicular crossovers to the primary streetscape; and
- Maintain an open atmosphere of street frontage by ensuring front boundary fences are low and/or visually permeable.



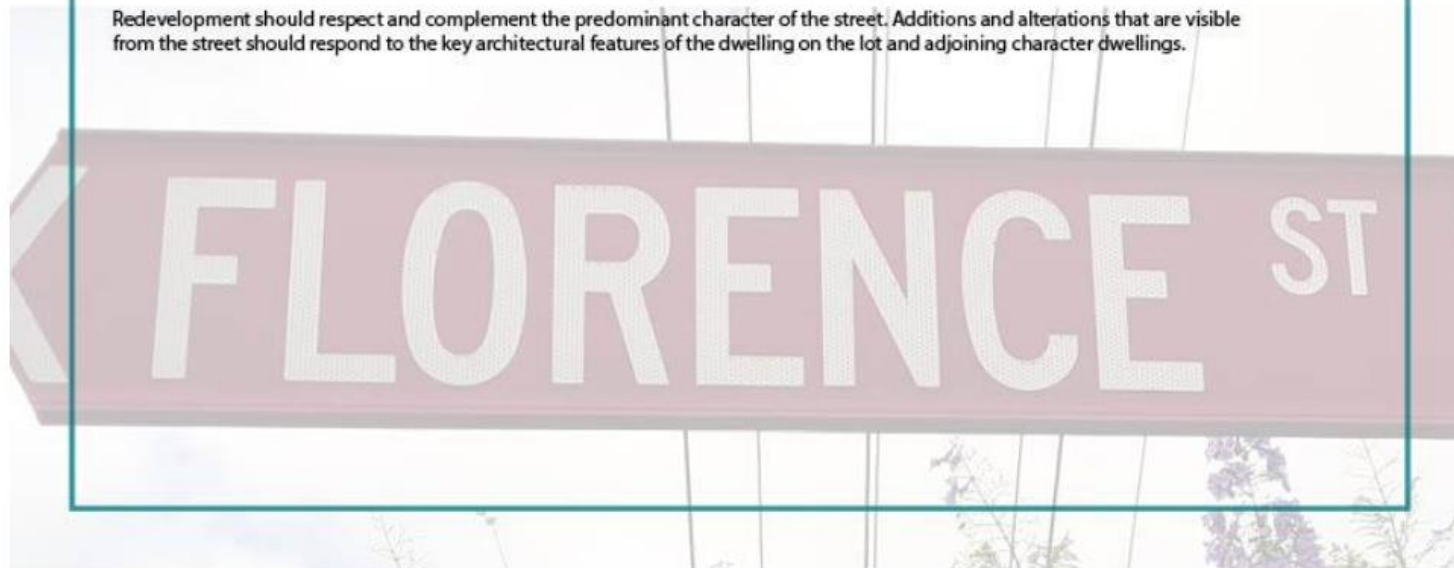
CITY OF VINCENT CHARACTER STREET GUIDELINES - FLORENCE STREET, WEST PERTH

Statement of Character

The Florence Character Street is generally mixed in terms of built form, with excellent examples of character dwellings dating back from the turn of the century as well as some more recent additions to the streetscape which have included designs typical of that time.

With strong ties to the earliest European settlement within the Perth Metropolitan Region, development within this street should enhance the historic dwellings within the street and embrace dwelling designs which support the historic character of the precinct. While the character of the streetscape is somewhat damaged by inconsistent building typologies within the street, the area to the south of Florence street maintains strong built historic character.

Redevelopment should respect and complement the predominant character of the street. Additions and alterations that are visible from the street should respond to the key architectural features of the dwelling on the lot and adjoining character dwellings.



CITY OF VINCENT CHARACTER STREET GUIDELINES - FLORENCE STREET, WEST PERTH

<i>Local Housing Objectives</i> <i>Pursuant to Clause 7.3.1(b) of the Residential Design Codes, the following Local Housing Objectives augment the Design Principles of the Residential Design Codes as specified.</i>	<i>Deemed to Comply</i> <i>Pursuant to Clause 7.3.1(a) of the Residential Design Codes, the following provisions replace the Deemed to Comply requirements of the Residential Design Codes as specified.</i>
1. Street setbacks	
<i>Augments Clause 5.1.2 P2.1 and P2.2</i>	<i>Replaces Clause 5.1.2 C2.1 i and ii and Clause 6.1.3</i>
O1.1 The setbacks of dwellings should reflect the predominant streetscape pattern and be consistent with adjacent properties.	C1.1 Ground floor primary street setbacks to be an average of the two directly adjoining properties on either side of the proposed development.
O1.2 First floor development is to be adequately setback to maintain the predominant single storey appearance of the streetscape.	C1.2 Walls on upper floors setback a minimum of 4 metres behind the ground floor predominant building line (excluding any porch or verandah), as determined by the City.

CITY OF VINCENT CHARACTER STREET GUIDELINES - FLORENCE STREET, WEST PERTH

3. Building height	
<i>Augments Clause 5.1.6 P6</i>	<i>Augments Clause 5.1.6 by adding the following</i>
<p>O3.2 The wall height of new dwellings, particularly the portions in view from the street, should approximate the street's typical wall height to avoid an under scaled squat appearance.</p>	<p>C3.2 Loft additions must be contained wholly within the roof space and shall not result in a visible change to the dwelling's appearance from the street.</p>
4. Setbacks of Garages and Carports	
<i>Augments Clause 5.2.1 P1</i>	<i>Replaces Clause 5.2.1 C1.1, C1.2</i>
<p>O4.1 Carports and garages should be located so as to maintain the absence of car parking facilities within the streetscape.</p> <p>O4.2 Car parking facilities located within front setback areas should ensure that the predominant character elements of the dwelling are visible and unobstructed.</p> <p>O4.3 Car parking facilities that do not unduly impact the presentation of the dwelling to the streetscape.</p>	<p>C4.3 Carports may be considered in front setback areas but only where no alternative location exists and a minimum setback of 1.5m from the primary street is maintained. Such carports shall not be fitted with any style of roller or tilt up panel door.</p>

CITY OF VINCENT CHARACTER STREET GUIDELINES - FLORENCE STREET, WEST PERTH

	<p>C4.4 Where carports are considered appropriate in front setback areas, carports shall be open in style and allow an unobstructed view of the dwelling from the street.</p> <p>C4.5 Garages and carports must match the existing dwellings' predominant colour, scale and materials and must be complementary and subservient to the dwelling.</p> <p>C4.6 Carports and garages forward of the dwelling or within the front setback area shall have a maximum wall height of 2.7 metres.</p> <p>C4.7 Carports and garages located within front setback areas shall have a maximum width of 5.5 metres (internal) or one-third the frontage of the lot, whichever is the lesser.</p>
<p>5. Street surveillance</p>	
<p><i>Augments Clause 5.2.3 P3</i></p>	
<p>O5.1 Buildings to be designed to encourage active use and actual surveillance of the front yard by including verandahs, porches or outdoor living areas and by including habitable rooms at the front of the dwelling.</p> <p>Habitable Room includes a bedroom, living room, lounge room, music room, sitting room, television room, kitchen, dining room, sewing room, study, playroom, family room, sunroom, gymnasium, fully enclosed swimming pool or patio.</p>	

CITY OF VINCENT CHARACTER STREET GUIDELINES - FLORENCE STREET, WEST PERTH

6. Street walls and fences	
<i>Augments Clause 5.2.4 P4</i>	<i>Replaces Clause 5.2.4 C4.1, C4.2</i>
O6.1 Ensure front boundary fences enhance the streetscape by being designed in the predominant style of the street.	C6.5 The maximum height of new street walls, street fences and gates facing the street is to be 1.8 metres above the adjacent footpath level.
O6.2 Front fences that are low and visually permeable in order to retain views to dwellings and front gardens.	C6.6 The maximum height of any solid portion of a new street wall, street fence and gate is to be 750mm above the adjacent footpath level. The remaining portion is to be a minimum of 80% visually permeable.
	C6.7 The maximum height of fence piers with decorative capping is to be 2 metres above the adjacent footpath level.
	C6.8 The maximum width of piers is to be 470mm.
	C6.9 The material(s) proposed include one or more of the following selected to reflect the predominate materials of fences within the Guideline Area: i. Timber pickets; or ii. Brick; or iii. Rendered masonry.

CITY OF VINCENT CHARACTER STREET GUIDELINES - FLORENCE STREET, WEST PERTH

7. General building design	
<i>New Local Housing Objectives as per Clause 7.3.1(b) of the Residential Design Codes</i>	<i>Criteria deemed to satisfy Local Housing Objectives 07.1-07.5</i>
07.1 New development is sympathetic to and complements the character of the existing dwellings within the streetscape.	C7.1 The built form of any new dwellings shall complement the style, scale and form of the dwellings within the existing streetscape.
07.2 New development shall ensure that unsympathetic contrasts in scale, mass and materials are avoided.	C7.2 The materials of any new dwellings as viewed from the street shall be consistent with the prevailing materials of the streetscape.
07.3 Additions visible from the street shall be compatible with and respectful of the existing dwelling and the predominant character of the existing streetscape.	C7.3 Additions to an existing dwelling when viewed from the street shall complement the architectural style, form, colour and materials of the existing dwelling. In the case that the existing dwelling is not an original dwelling, additions shall complement the architectural style, form, colour and materials of the prevailing streetscape.
07.4 The roof of new dwellings is to be consistent with the predominant roof form in the existing streetscape in terms of scale and pitch.	C7.4 The floor levels of new dwellings shall match or mediate between the floor levels of dwellings on either side of the proposed dwelling.
07.5 Each street facing window should have a style that suits the predominant character of the street and the architectural style of the proposed dwelling.	C7.5 The roof pitch of new dwellings or upper storey additions is to be between 30 degrees and 40 degrees.
	C7.6 Street facing windows include inner sections with a height of at least 1.6 times their width.
	C7.7 Windows to the front façade of an upper storey addition shall reflect the shape and configuration of the original dwellings' windows when viewed from the primary street.

CITY OF VINCENT CHARACTER STREET GUIDELINES - PROSPECT PLACE, WEST PERTH

The Prospect Character Street has been recognised by the community and the Council as making a positive contribution towards built character of the City. To help identify and celebrate this unique part of the City, this guideline has been put in place to guide and assist future development.

These guidelines are to be applied to development where the dwelling is fronting the primary street and/or is within an area that is visible from the primary street, within the following area:
Nos. 2 - 22 Prospect Place (Inclusive)

The general objectives of development the subject of these guidelines are:

- Retention and conservation of original dwellings;
- Protection and enhancement of existing streetscape character;
- Retention of the visual character of late nineteenth to early twentieth century residential development;
- Encourage a high standard of architectural and sustainable design solutions for new development and additions to existing development;
- New development that responds appropriately and complements the surrounding streetscape through:
 - Consistent scale and bulk in relation to the original street pattern, maintaining front and side setback patterns; and
 - Built form that incorporates consistent physical built form elements without the requirement to mimic the style of the original character dwellings.
- Maintain the absence of and promote the removal of visually intrusive car parking structures and vehicular crossovers to the primary streetscape; and
- Maintain an open atmosphere of street frontage by ensuring front boundary fences are low and/or visually permeable.



CITY OF VINCENT CHARACTER STREET GUIDELINES - PROSPECT PLACE, WEST PERTH

Statement of Character

The *Prospect Character Street* is generally mixed in terms of built form, containing both original (pre 1950s) and more contemporary dwellings. While only four original dwellings are present within the street, they are good examples of mid century development and dwellings which include many character elements which are important to the cultural history of the area.

With strong ties to the earliest European settlement within the Perth Metropolitan Region, development within this street should enhance the historic dwellings within the street and embrace dwelling designs which support the historic character of the precinct as a whole.

Redevelopment should respect and complement the predominant character of the street. Additions and alterations that are visible from the street should respond to the key architectural features of the dwelling on the lot and adjoining character dwellings.



CITY OF VINCENT CHARACTER STREET GUIDELINES - PROSPECT PLACE, WEST PERTH

<i>Local Housing Objectives</i> Pursuant to Clause 7.3.1(b) of the Residential Design Codes, the following Local Housing Objectives augment the Design Principles of the Residential Design Codes as specified.	<i>Deemed to Comply</i> Pursuant to Clause 7.3.1(a) of the Residential Design Codes, the following provisions replace the Deemed to Comply requirements of the Residential Design Codes as specified.
1. Street setbacks	
<i>Augments Clause 5.1.2 P2.1 and P2.2</i>	<i>Replaces Clause 5.1.2 C2.1 i and ii and Clause 6.1.3</i>
O1.1 The setbacks of dwellings should reflect the predominant streetscape pattern and be consistent with adjacent properties.	C1.1 Ground floor primary street setbacks to be an average of the two directly adjoining properties on either side of the proposed development.
O1.2 First floor development is to be adequately setback to maintain the predominant single storey appearance of the streetscape.	C1.2 Walls on upper floors setback a minimum of 4 metres behind the ground floor predominant building line (excluding any porch or verandah), as determined by the City.

CITY OF VINCENT CHARACTER STREET GUIDELINES - PROSPECT PLACE, WEST PERTH

3. Building height	
<i>Augments Clause 5.1.6 P6</i>	<i>Augments Clause 5.1.6 by adding the following</i>
O3.2 The wall height of new dwellings, particularly the portions in view from the street, should approximate the street’s typical wall height to avoid an under scaled squat appearance.	C3.2 Loft additions must be contained wholly within the roof space and shall not result in a visible change to the dwelling’s appearance from the street.
4. Setbacks of Garages and Carports	
<i>Augments Clause 5.2.1 P1</i>	<i>Replaces Clause 5.2.1 C1.1, C1.2</i>
O4.1 Carports and garages should be located so as to maintain the absence of car parking facilities within the streetscape.	C4.3 Where carports are considered appropriate in front setback areas, carports shall be open in style and allow an unobstructed view of the dwelling from the street.
O4.2 Car parking facilities located within front setback areas should ensure that the predominant character elements of the dwelling are visible and unobstructed.	C4.4 Garages and carports must match the existing dwellings’ predominant colour, scale and materials and must be complementary and subservient to the dwelling.
O4.3 Car parking facilities that do not unduly impact the presentation of the dwelling to the streetscape.	C4.5 Carports and garages forward of the dwelling or within the front setback area shall have a maximum wall height of 2.7 metres.
	C4.6 Carports and garages located within front setback areas shall have a maximum width of 5.5 metres (internal) or one-third the frontage of the lot, whichever is the lesser.

CITY OF VINCENT CHARACTER STREET GUIDELINES - PROSPECT PLACE, WEST PERTH

5. Street surveillance	
<i>Augments Clause 5.2.3 P3</i>	
05.1	Buildings to be designed to encourage active use and actual surveillance of the front yard by including verandahs, porches or outdoor living areas and by including habitable rooms at the front of the dwelling. Habitable Room includes a bedroom, living room, lounge room, music room, sitting room, television room, kitchen, dining room, sewing room, study, playroom, family room, sunroom, gymnasium, fully enclosed swimming pool or patio.

CITY OF VINCENT CHARACTER STREET GUIDELINES - PROSPECT PLACE, WEST PERTH

6. Street walls and fences	
<i>Augments Clause 5.2.4 P4</i>	<i>Replaces Clause 5.2.4 C4.1, C4.2</i>
O6.1 New fences within the front setback area shall enhance the streetscape by being consistent in materials, style and colour of the original fences within the street.	C6.5 The maximum height of new street walls, street fences and gates facing the street is to be 1.8 metres above the adjacent footpath level.
O6.2 Front fences that are low and visually permeable in order to retain views to dwellings and front gardens.	C6.6 The maximum height of any solid portion of a new street wall, street fence and gate is to be 750mm above the adjacent footpath level. The remaining portion is to be a minimum of 80% visually permeable.
	C6.7 The maximum height of fence piers with decorative capping is to be 2 metres above the adjacent footpath level.
	C6.8 The maximum width of piers is to be 470mm.
	C6.9 The material(s) proposed include one or more of the following selected to reflect the predominate materials of fences within the Guideline Area: i. Timber pickets; or ii. Brick; or iii. Rendered masonry.

CITY OF VINCENT CHARACTER STREET GUIDELINES - PROSPECT PLACE, WEST PERTH

7. General building design	
<i>New Local Housing Objectives as per Clause 7.3.1(b) of the Residential Design Codes</i>	<i>Criteria deemed to satisfy Local Housing Objectives O7.1-O7.5</i>
O7.1 New development is sympathetic to and complements the character of the existing dwellings within the streetscape.	C7.1 The built form of any new dwellings shall complement the style, scale and form of the dwellings within the existing streetscape.
O7.2 New development shall ensure that unsympathetic contrasts in scale, mass and materials are avoided.	C7.2 The materials of any new dwellings as viewed from the street shall be consistent with the prevailing materials of the streetscape.
O7.3 Additions visible from the street shall be compatible with and respectful of the existing dwelling and the predominant character of the existing streetscape.	C7.3 Additions to an existing dwelling when viewed from the street shall complement the architectural style, form, colour and materials of the existing dwelling. In the case that the existing dwelling is not an original dwelling, additions shall complement the architectural style, form, colour and materials of the prevailing streetscape.
O7.4 The roof of new dwellings is to be consistent with the predominant roof form in the existing streetscape in terms of scale and pitch.	C7.4 The floor levels of new dwellings shall match or mediate between the floor levels of dwellings on either side of the proposed dwelling.
O7.5 Each street facing window should have a style that suits the predominant character of the street and the architectural style of the proposed dwelling.	C7.5 The roof pitch of new dwellings or upper storey additions is to be between 30 degrees and 40 degrees. C7.6 Street facing windows include inner sections with a height of at least 1.6 times their width. C7.7 Windows to the front façade of an upper storey addition shall reflect the shape and configuration of the original dwellings' windows when viewed from the primary street.

CITY OF VINCENT CHARACTER STREET GUIDELINES - HAMMOND STREET, WEST PERTH

The Hammond Character Street has been recognised by the community and the Council as making a positive contribution towards built character of the City. To help identify and celebrate this unique part of the City, this guideline has been put in place to guide and assist future development.

These guidelines are to be applied to development where the dwelling is fronting the primary street and/or is within an area that is visible from the primary street, within the following area:
Nos. 3- 24 Hammond Street (Inclusive)

The general objectives of development the subject of these guidelines are:

- Retention and conservation of original dwellings;
- Protection and enhancement of existing streetscape character;
- Retention of the visual character of late nineteenth to early twentieth century residential development;
- Encourage a high standard of architectural and sustainable design solutions for new development and additions to existing development;
- New development that responds appropriately and complements the surrounding streetscape through:
 - Consistent scale and bulk in relation to the original street pattern, maintaining front and side setback patterns; and
 - Built form that incorporates consistent physical built form elements without the requirement to mimic the style of the original character dwellings.
- Maintain the absence of and promote the removal of visually intrusive car parking structures and vehicular crossovers to the primary streetscape; and
- Maintain an open atmosphere of street frontage by ensuring front boundary fences are low and/or visually permeable.



CITY OF VINCENT CHARACTER STREET GUIDELINES - HAMMOND STREET, WEST PERTH

Statement of Character

The **Hammond Character Street**, while generally mixed in terms of built form, contains some good examples of character dwellings dating back from the turn of the century as well as some more recent additions to the streetscape which have included designs typical of that time.

With strong ties to the earliest European settlement within the Perth Metropolitan Region, development within this street should enhance the historic dwellings within the street and embrace dwelling designs which support the historic character of the precinct. While the character of the streetscape is somewhat impacted by inconsistent building typologies within the street, original dwellings such as those at 17 and 4 Hammond Street are key to reflecting the historic character of the area.

Redevelopment should respect and complement the predominant character of the street. Additions and alterations that are visible from the street should respond to the key architectural features of the dwelling on the lot and adjoining character dwellings.



CITY OF VINCENT CHARACTER STREET GUIDELINES - HAMMOND STREET, WEST PERTH

<p><i>Local Housing Objectives</i> Pursuant to Clause 7.3.1(b) of the Residential Design Codes, the following Local Housing Objectives augment the Design Principles of the Residential Design Codes as specified.</p>	<p><i>Deemed to Comply</i> Pursuant to Clause 7.3.1 (a) of the Residential Design Codes, the following provisions replace the Deemed to Comply requirements of the Residential Design Codes as specified.</p>
<p>1. Street setbacks</p>	
<p><i>Augments Clause 5.1.2 P2.1 and P2.2</i></p>	<p><i>Replaces Clause 5.1.2 C2.1 i and ii and Clause 6.1.3</i></p>
<p>O1.1 The setbacks of dwellings should reflect the predominant streetscape pattern and be consistent with adjacent properties.</p>	<p>C1.1 Ground floor primary street setbacks to be an average of the two directly adjoining properties on either side of the proposed development.</p>
<p>O1.2 First floor development is to be adequately setback to maintain the predominant single storey appearance of the streetscape.</p>	<p>C1.2 Walls on upper floors setback a minimum of 4 metres behind the ground floor predominant building line (excluding any porch or verandah), as determined by the City.</p>

CITY OF VINCENT CHARACTER STREET GUIDELINES - HAMMOND STREET, WEST PERTH

3. Building height	
<i>Augments Clause 5.1.6 P6</i>	<i>Augments Clause 5.1.6 by adding the following</i>
O3.2 The wall height of new dwellings, particularly the portions in view from the street, should approximate the street's typical wall height to avoid an under scaled squat appearance.	C3.2 Loft additions must be contained wholly within the roof space and shall not result in a visible change to the dwelling's appearance from the street.
4. Setbacks of Garages and Carports	
<i>Augments Clause 5.2.1 P1</i>	<i>Replaces Clause 5.2.1 C1.1, C1.2</i>
O4.1 Carports and garages should be located so as to maintain the absence of car parking facilities within the streetscape.	C4.3 Carports may be considered in front setback areas but only where no alternative location exists and a minimum setback of 1.5m from the primary street is maintained. Such carports shall not be fitted with any style of roller or tilt up panel door.
O4.2 Car parking facilities located within front setback areas should ensure that the predominant character elements of the dwelling are visible and unobstructed.	
O4.3 Car parking facilities that do not unduly impact the presentation of the dwelling to the streetscape.	

CITY OF VINCENT CHARACTER STREET GUIDELINES - HAMMOND STREET, WEST PERTH

	<p>C4.4 Where carports are considered appropriate in front setback areas, carports shall be open in style and allow an unobstructed view of the dwelling from the street.</p> <p>C4.5 Garages and carports must match the existing dwellings' predominant colour, scale and materials and must be complementary and subservient to the dwelling.</p> <p>C4.6 Carports and garages forward of the dwelling or within the front setback area shall have a maximum wall height of 2.7 metres.</p> <p>C4.7 Carports and garages located within front setback areas shall have a maximum width of 5.5 metres (internal) or one-third the frontage of the lot, whichever is the lesser.</p>
<p>5. Street surveillance</p>	
<p><i>Augments Clause 5.2.3 P3</i></p>	
<p>O5.1 Buildings to be designed to encourage active use and actual surveillance of the front yard by including verandahs, porches or outdoor living areas and by including habitable rooms at the front of the dwelling.</p> <p>Habitable Room includes a bedroom, living room, lounge room, music room, sitting room, television room, kitchen, dining room, sewing room, study, playroom, family room, sunroom, gymnasium, fully enclosed swimming pool or patio.</p>	

CITY OF VINCENT CHARACTER STREET GUIDELINES - HAMMOND STREET, WEST PERTH

6. Street walls and fences	
<i>Augments Clause 5.2.4 P4</i>	<i>Replaces Clause 5.2.4 C4.1, C4.2</i>
O6.1 Ensure front boundary fences enhance the streetscape by being designed in the predominant style of the street.	C6.5 The maximum height of new street walls, street fences and gates facing the street is to be 1.8 metres above the adjacent footpath level.
O6.2 Front fences that are low and visually permeable in order to retain views to dwellings and front gardens.	C6.6 The maximum height of any solid portion of a new street wall, street fence and gate is to be 750mm above the adjacent footpath level. The remaining portion is to be a minimum of 80% visually permeable.
	C6.7 The maximum height of fence piers with decorative capping is to be 2 metres above the adjacent footpath level.
	C6.8 The maximum width of piers is to be 470mm.
	C6.9 The material(s) proposed include one or more of the following selected to reflect the predominate materials of fences within the Guideline Area: <ul style="list-style-type: none"> i. Timber pickets; or ii. Brick; or iii. Rendered masonry.

CITY OF VINCENT CHARACTER STREET GUIDELINES - HAMMOND STREET, WEST PERTH

7. General building design	
<i>New Local Housing Objectives as per Clause 7.3.1(b) of the Residential Design Codes</i>	<i>Criteria deemed to satisfy Local Housing Objectives O7.1-O7.5</i>
O7.1 New development is sympathetic to and complements the character of the existing dwellings within the streetscape.	C7.1 The built form of any new dwellings shall complement the style, scale and form of the dwellings within the existing streetscape.
O7.2 New development shall ensure that unsympathetic contrasts in scale, mass and materials are avoided.	C7.2 The materials of any new dwellings as viewed from the street shall be consistent with the prevailing materials of the streetscape.
O7.3 Additions visible from the street shall be compatible with and respectful of the existing dwelling and the predominant character of the existing streetscape.	C7.3 Additions to an existing dwelling when viewed from the street shall complement the architectural style, form, colour and materials of the existing dwelling. In the case that the existing dwelling is not an original dwelling, additions shall complement the architectural style, form, colour and materials of the prevailing streetscape.
O7.4 The roof of new dwellings is to be consistent with the predominant roof form in the existing streetscape in terms of scale and pitch.	C7.4 The floor levels of new dwellings shall match or mediate between the floor levels of dwellings on either side of the proposed dwelling.
O7.5 Each street facing window should have a style that suits the predominant character of the street and the architectural style of the proposed dwelling.	C7.5 The roof pitch of new dwellings or upper storey additions is to be between 30 degrees and 40 degrees.
	C7.6 Street facing windows include inner sections with a height of at least 1.6 times their width.
	C7.7 Windows to the front façade of an upper storey addition shall reflect the shape and configuration of the original dwellings' windows when viewed from the primary street.

CITY OF VINCENT CHARACTER STREET GUIDELINES - STRATHCONA STREET, WEST PERTH

The *Strathcona Character Street* has been recognised by the community and the Council as making a positive contribution towards built character of the City. To help identify and celebrate this unique part of the City, this guideline has been put in place to guide and assist future development.

These guidelines are to be applied to development where the dwelling is fronting the primary street and/or is within an area that is visible from the primary street, within the following area:

Nos. 1 - 15 Strathcona Street (Inclusive)

The general objectives of development the subject of these guidelines are:

- Retention and conservation of original dwellings;
- Protection and enhancement of existing streetscape character;
- Retention of the visual character of late nineteenth to early twentieth century residential development;
- Encourage a high standard of architectural and sustainable design solutions for new development and additions to existing development;
- New development that responds appropriately and complements the surrounding streetscape through:
 - Consistent scale and bulk in relation to the original street pattern, maintaining front and side setback patterns; and
 - Built form that incorporates consistent physical built form elements without the requirement to mimic the style of the original character dwellings.
- Maintain the absence of and promote the removal of visually intrusive car parking structures and vehicular crossovers to the primary streetscape; and
- Maintain an open atmosphere of street frontage by ensuring front boundary fences are low and/or visually permeable.



CITY OF VINCENT CHARACTER STREET GUIDELINES - STRATHCONA STREET, WEST PERTH

Statement of Character

The *Strathcona Character Street* is generally consistent in terms of built form, with the majority of the dwellings being original to the street. This includes excellent examples of character dwellings dating back from the turn of the century and are predominately in excellent condition.

With strong ties to the earliest European settlement within the Perth Metropolitan Region, development within this street should enhance the historic dwellings within the street and embrace dwelling designs which support the historic character of the precinct. While the character of the street is impacted by more contemporary designed buildings, the presence of minimal carparking structures within the street setback area and consistent street setbacks enhances the overall built quality to the street.

Redevelopment should respect and complement the predominant character of the street. Additions and alterations that are visible from the street should respond to the key architectural features of the dwelling on the lot and adjoining character dwellings.

CITY OF VINCENT CHARACTER STREET GUIDELINES - STRATHCONA STREET, WEST PERTH

<p><i>Local Housing Objectives</i> Pursuant to Clause 7.3.1(b) of the Residential Design Codes, the following Local Housing Objectives augment the Design Principles of the Residential Design Codes as specified.</p>	<p><i>Deemed to Comply</i> Pursuant to Clause 7.3.1(a) of the Residential Design Codes, the following provisions replace the Deemed to Comply requirements of the Residential Design Codes as specified.</p>
<p>1. Street setbacks</p>	
<p><i>Augments Clause 5.1.2 P2.1 and P2.2</i></p>	<p><i>Replaces Clause 5.1.2 C2.1 i and ii and Clause 6.1.3</i></p>
<p>O1.1 The setbacks of dwellings should reflect the predominant streetscape pattern and be consistent with adjacent properties.</p>	<p>C1.1 Ground floor primary street setbacks to be an average of the two directly adjoining properties on either side of the proposed development.</p>
<p>O1.2 First floor development is to be adequately setback to maintain the predominant single storey appearance of the streetscape.</p>	

CITY OF VINCENT CHARACTER STREET GUIDELINES - STRATHCONA STREET, WEST PERTH

3. Building height	
<i>Augments Clause 5.1.6 P6</i>	<i>Augments Clause 5.1.6 by adding the following</i>
<p>O3.2 The wall height of new dwellings, particularly the portions in view from the street, should approximate the street's typical wall height to avoid an under scaled squat appearance.</p>	<p>C3.2 Loft additions must be contained wholly within the roof space and shall not result in a visible change to the dwelling's appearance from the street.</p>
4. Setbacks of Garages and Carports	
<i>Augments Clause 5.2.1 P1</i>	<i>Replaces Clause 5.2.1 C1.1, C1.2</i>
<p>O4.1 Carports and garages should be located so as to maintain the absence of car parking facilities within the streetscape.</p> <p>O4.2 Car parking facilities located within front setback areas should ensure that the predominant character elements of the dwelling are visible and unobstructed.</p> <p>O4.3 Car parking facilities that do not unduly impact the presentation of the dwelling to the streetscape.</p>	<p>C4.3 Carports may be considered in front setback areas but only where no alternative location exists and a minimum setback of 1.5m from the primary street is maintained. Such carports shall not be fitted with any style of roller or tilt up panel door.</p> <p>C4.4 Where carports are considered appropriate in front setback areas, carports shall be open in style and allow an unobstructed view of the dwelling from the street.</p> <p>C4.5 Garages and carports must match the existing dwellings' predominant colour, scale and materials and must be complementary and subservient to the dwelling.</p>

CITY OF VINCENT CHARACTER STREET GUIDELINES - STRATHCONA STREET, WEST PERTH

	<p>C4.6 Carports and garages forward of the dwelling or within the front setback area shall have a maximum wall height of 2.7 metres.</p> <p>C4.7 Carports and garages located within front setback areas shall have a maximum width of 5.5 metres (internal) or one-third the frontage of the lot, whichever is the lesser.</p>
<p>5. Street surveillance</p>	
<p><i>Augments Clause 5.2.3 P3</i></p>	
<p>O5.1 Buildings to be designed to encourage active use and actual surveillance of the front yard by including verandahs, porches or outdoor living areas and by including habitable rooms at the front of the dwelling.</p> <p>Habitable Room includes a bedroom, living room, lounge room, music room, sitting room, television room, kitchen, dining room, sewing room, study, playroom, family room, sunroom, gymnasium, fully enclosed swimming pool or patio.</p>	

CITY OF VINCENT CHARACTER STREET GUIDELINES - STRATHCONA STREET, WEST PERTH

6. Street walls and fences	
<i>Augments Clause 5.2.4 P4</i>	<i>Replaces Clause 5.2.4 C4.1, C4.2</i>
O6.1 Ensure front boundary fences enhance the streetscape by being designed in the predominant style of the street.	C6.1 The maximum height of new street walls, street fences and gates facing the street is to be 1.2 metres above the adjacent footpath level.
O6.2 Front fences that are low and visually permeable in order to retain views to dwellings and front gardens.	C6.2 The maximum height of any solid portion of a new street wall, street fence and gate is to be 500mm above the adjacent footpath level. The remaining portion is to be a minimum of 40% visually permeable.
	C6.3 The maximum height of fence piers with decorative capping is to be 1.8 metres above the adjacent footpath level.
	C6.4 The maximum width of piers is to be 470mm.
	C6.5 The material(s) proposed include one or more of the following selected to reflect the predominate materials of fences within the Guideline Area: i. Timber pickets; or ii. Brick; or iii. Rendered masonry.

CITY OF VINCENT CHARACTER STREET GUIDELINES - STRATHCONA STREET, WEST PERTH

7. General building design	
<i>New Local Housing Objectives as per Clause 7.3.1(b) of the Residential Design Codes</i>	<i>Criteria deemed to satisfy Local Housing Objectives O7.1-07.5</i>
07.1 New development is sympathetic to and complements the character of the existing dwellings within the streetscape.	C7.1 The built form of any new dwellings shall complement the style, scale and form of the dwellings within the existing streetscape.
07.2 New development shall ensure that unsympathetic contrasts in scale, mass and materials are avoided.	C7.2 The materials of any new dwellings as viewed from the street shall be consistent with the prevailing materials of the streetscape.
07.3 Additions visible from the street shall be compatible with and respectful of the existing dwelling and the predominant character of the existing streetscape.	C7.3 Additions to an existing dwelling when viewed from the street shall complement the architectural style, form, colour and materials of the existing dwelling. In the case that the existing dwelling is not an original dwelling, additions shall complement the architectural style, form, colour and materials of the prevailing streetscape.
07.4 The roof of new dwellings is to be consistent with the predominant roof form in the existing streetscape in terms of scale and pitch.	C7.4 The floor levels of new dwellings shall match or mediate between the floor levels of dwellings on either side of the proposed dwelling.
07.5 Each street facing window should have a style that suits the predominant character of the street and the architectural style of the proposed dwelling.	C7.5 The roof pitch of new dwellings or upper storey additions is to be between 30 degrees and 40 degrees.
	C7.6 Street facing windows include inner sections with a height of at least 1.6 times their width.
	C7.7 Windows to the front façade of an upper storey addition shall reflect the shape and configuration of the original dwellings' windows when viewed from the primary street.

CITY OF VINCENT CHARACTER STREET GUIDELINES - WILBERFORCE STREET, MOUNT HAWTHORN

The *Wilberforce Character Street* has been recognised by the community and the Council as making a positive contribution towards built character of the City. To help identify and celebrate this unique part of the City, this guideline has been put in place to guide and assist future development.

These guidelines are to be applied to development where the dwelling is fronting the primary street and/or is within an area that is visible from the primary street, within the following area:
Nos. 1 - 25 Wilberforce Street (Inclusive)

The general objectives of development the subject of these guidelines are:

- Retention and conservation of original dwellings;
- Protection and enhancement of existing streetscape character;
- Retention of the visual character of late nineteenth to early twentieth century residential development;
- Encourage a high standard of architectural and sustainable design solutions for new development and additions to existing development;
- New development that responds appropriately and complements the surrounding streetscape through:
 - Consistent scale and bulk in relation to the original street pattern, maintaining front and side setback patterns; and
 - Built form that incorporates consistent physical built form elements without the requirement to mimic the style of the original character dwellings.
- Maintain the absence of and promote the removal of visually intrusive car parking structures and vehicular crossovers to the primary streetscape; and
- Maintain an open atmosphere of street frontage by ensuring front boundary fences are low and/or visually permeable.



CITY OF VINCENT CHARACTER STREET GUIDELINES - WILBERFORCE STREET, MOUNT HAWTHORN

Statement of Character

The **Wilberforce Character Street** is generally consistent in terms of built form, with the majority of the dwellings being original to the street. This includes excellent examples of character dwellings dating back from the turn of the century and are predominately in excellent condition.

With strong ties to the earliest European settlement within the Perth Metropolitan Region, development within this street should enhance the historic dwellings within the street and embrace dwelling designs which support the historic character of the precinct. While the character of the street is impacted by more contemporary designed buildings, the presence of minimal carparking structures within the street setback area and consistent street setbacks enhances the overall built quality to the street.

Redevelopment should respect and complement the predominant character of the street. Additions and alterations that are visible from the street should respond to the key architectural features of the dwelling on the lot and adjoining character dwellings.



CITY OF VINCENT CHARACTER STREET GUIDELINES - WILBERFORCE STREET, MOUNT HAWTHORN

<p><i>Local Housing Objectives</i> Pursuant to Clause 7.3.1(b) of the Residential Design Codes, the following Local Housing Objectives augment the Design Principles of the Residential Design Codes as specified.</p>	<p><i>Deemed to Comply</i> Pursuant to Clause 7.3.1(a) of the Residential Design Codes, the following provisions replace the Deemed to Comply requirements of the Residential Design Codes as specified.</p>
<p>1. Street setbacks</p>	
<p><i>Augments Clause 5.1.2 P2.1 and P2.2</i></p>	<p><i>Replaces Clause 5.1.2 C2.1 i and ii and Clause 6.1.3</i></p>
<p>O1.1 The setbacks of dwellings should reflect the predominant streetscape pattern and be consistent with adjacent properties.</p>	<p>C1.1 Ground floor primary street setbacks to be an average of the two directly adjoining properties on either side of the proposed development.</p>
<p>2. Setbacks of Garages and Carports</p>	
<p><i>Augments Clause 5.2.1 P1</i></p>	<p><i>Replaces Clause 5.2.1 C1.1, C1.2</i></p>
<p>O2.1 Carports and garages should be located so as to maintain the absence of car parking facilities within the streetscape.</p> <p>O2.2 Car parking facilities located within front setback areas should ensure that the predominant character elements of the dwelling are visible and unobstructed.</p> <p>O2.3 Car parking facilities that do not unduly impact the presentation of the dwelling to the streetscape.</p>	<p>C2.1 Carports may be considered in front setback areas but only where no alternative location exists and a minimum setback of 1.5m from the primary street is maintained. Such carports shall not be fitted with any style of roller or tilt up panel door.</p> <p>C2.2 Where carports are considered appropriate in front setback areas, carports shall be open in style and allow an unobstructed view of the dwelling from the street.</p> <p>C2.3 Garages and carports must match the existing dwelling's predominant colour, scale and materials and must be complementary and subservient to the dwelling.</p> <p>C2.4 Carports and garages forward of the dwelling or within the front setback area shall have a maximum wall height of 2.7 metres.</p> <p>C2.5 Carports and garages located within front setback areas shall have a maximum width of 5.5 metres (internal) or one- third the frontage of the lot, whichever is the lesser.</p>

CITY OF VINCENT CHARACTER STREET GUIDELINES - WILBERFORCE STREET, MOUNT HAWTHORN

<p><i>Local Housing Objectives</i> Pursuant to Clause 7.3.1(b) of the Residential Design Codes, the following Local Housing Objectives augment the Design Principles of the Residential Design Codes as specified.</p>	<p><i>Deemed to Comply</i> Pursuant to Clause 7.3.1(a) of the Residential Design Codes, the following provisions replace the Deemed to Comply requirements of the Residential Design Codes as specified.</p>
<p>3. General building design</p>	
<p><i>New Local Housing Objectives as per Clause 7.3.1(b) of the Residential Design Codes</i></p>	<p><i>Criteria deemed to satisfy Local Housing Objectives O7.1-O7.5</i></p>
<p>O3.1 New development is sympathetic to and complements the character of the existing dwellings within the streetscape.</p>	<p>C3.1 The built form of any new dwellings shall complement the style, scale and form of the dwellings within the existing streetscape.</p>
<p>O3.2 New development shall ensure that unsympathetic contrasts in scale, mass and materials are avoided.</p>	<p>C3.2 The materials of any new dwellings as viewed from the street shall be consistent with the prevailing materials of the streetscape.</p>
<p>O3.3 Additions visible from the street shall be compatible with and respectful of the existing dwelling and the predominant character of the existing streetscape.</p>	<p>C3.3 Additions to an existing dwelling when viewed from the street shall complement the architectural style, form, colour and materials of the existing dwelling. In the case that the existing dwelling is not an original dwelling, additions shall complement the architectural style, form, colour and materials of the prevailing streetscape.</p>
<p>O3.4 The roof of new dwellings is to be consistent with the predominant roof form in the existing streetscape in terms of scale and pitch.</p>	<p>C3.4 The floor levels of new dwellings shall match or mediate between the floor levels of dwellings on either side of the proposed dwelling.</p>
<p>O3.5 Each street facing window should have a style that suits the predominant character of the street and the architectural style of the proposed dwelling.</p>	<p>C3.5 Windows to the front façade of an upper storey addition shall reflect the shape and configuration of the original dwelling’s windows when viewed from the primary street.</p>

OFFICE USE ONLY	
Responsible Officer	Manager Policy & Place
Initial Council Adoption	22/09/2015
Previous Title	Local Planning Policy 7.5.15 – Character Retention Areas and Heritage Areas
Reviewed / Amended	12/12/2017, 1/05/2018, 23/03/2021, 14/12/2021, 26/7/2022
Next Review Date	March 2022

CITY OF VINCENT CHARACTER STREET GUIDELINES - ORANGE AVENUE & HOPE STREET, PERTH

The Orange Avenue and Hope Street Character Area has been recognised by the community and the Council as making a positive contribution towards built character of the City. To help identify and celebrate this unique part of the City, this guideline has been put in place to guide and assist future development.

These guidelines are to be applied to development where the dwelling is fronting the primary street and/or is within an area that is visible from the primary street, within the following area: Nos. 1 - 23 Orange Avenue (Inclusive) and 2A to 16 Hope Street (inclusive), Perth.

The general objectives of development the subject of these guidelines are:

- Retention and conservation of original dwellings;
- Protection and enhancement of existing streetscape character;
- Retention of the visual character of late nineteenth to early twentieth century residential development;
- Encourage a high standard of architectural and sustainable design solutions for new development and additions to existing development;
- New development that responds appropriately and complements the surrounding streetscape through:
 - Consistent scale and bulk in relation to the original street pattern, maintaining front and side setback patterns; and
 - Built form that incorporates consistent physical built form elements without the requirement to mimic the style of the original character dwellings.
- Maintain the absence of and promote the removal of visually intrusive car parking structures and vehicular crossovers to the primary streetscape; and
- Maintain an open atmosphere of street frontage by ensuring front boundary fences are low and/or visually permeable.



CITY OF VINCENT CHARACTER STREET GUIDELINES - ORANGE AVENUE & HOPE STREET, PERTH

Statement of Character

The **Orange Avenue and Hope Street** is generally consistent in terms of built form, with the majority of the dwellings being original to the street. This includes excellent examples of character dwellings dating back from the turn of the century and are predominately in good condition.

With the build out of residences within the street occurring from 1906 onwards reflecting early European settlement within the Perth Metropolitan Region, development within this street should enhance the historic building elements within the street and embrace dwelling designs which support the historic character of the precinct. Owing to the unique transection of Hope Street on Orange Avenue and more contemporary development which has occurred on this aspect, the character of the area has been impacted by more modern additions and dwellings that occupy this portion of the streetscape. The presence of minimal carparking structures within the street setback area and consistent street setbacks enhances the overall built quality to the streets.

Redevelopment should respect and complement the predominant character of the street. Additions and alterations that are visible from the street should respond to the key architectural features of the dwelling on the lot and adjoining character dwellings.



CITY OF VINCENT CHARACTER STREET GUIDELINES - ORANGE AVENUE & HOPE STREET, PERTH

<p><i>Local Housing Objectives</i></p> <p><i>Pursuant to Clause 7.3.1(b) of the Residential Design Codes, the following Local Housing Objectives augment the Design Principles of the Residential Design Codes as specified.</i></p>	<p><i>Deemed to Comply</i></p> <p><i>Pursuant to Clause 7.3.1(a) of the Residential Design Codes, the following provisions replace the Deemed to Comply requirements of the Residential Design Codes as specified.</i></p>
<p>1. Street setbacks</p>	
<p><i>Augments Clause 5.1.2 P2.1 and P2.2</i></p>	<p><i>Replaces Clause 5.1.2 C2.1 i and ii and Clause 6.1.3</i></p>
<p>O1.1 The setbacks of dwellings should reflect the predominant streetscape pattern and be consistent with adjacent properties.</p>	<p>C1.1 Ground floor primary street setbacks to be an average of the two directly adjoining properties on either side of the proposed development.</p>
<p>O1.2 First floor development is to be adequately setback to maintain the predominant single storey appearance of the streetscape.</p>	<p>C1.2 Walls on upper floors setback a minimum of 4 metres behind the ground floor predominant building line (excluding any porch or verandah), as determined by the City.</p>

CITY OF VINCENT CHARACTER STREET GUIDELINES - ORANGE AVENUE & HOPE STREET, PERTH

2. Building height	
<i>Augments Clause 5.1.6 P6</i>	<i>Augments Clause 5.1.6 by adding the following</i>
O2.1 The wall height of new dwellings, particularly the portions in view from the street, should approximate the street's typical wall height to avoid an under scaled squat appearance.	C2.1 Loft additions must be contained wholly within the roof space and shall not result in a visible change to the dwelling's appearance from the street.
3. Setbacks of Garages and Carports	
<i>Augments Clause 5.2.1 P1</i>	<i>Replaces Clause 5.2.1 C1.1, C1.2</i>
O3.1 Carports and garages should be located so as to maintain the absence of car parking facilities within the streetscape.	C3.1 Carports may be considered in front setback areas but only where no alternative location exists and a minimum setback of 1.5m from the primary street is maintained. Such carports shall not be fitted with any style of roller or tilt up panel door.
O3.2 Car parking facilities located within front setback areas should ensure that the predominant character elements of the dwelling are visible and unobstructed.	C3.2 Where carports are considered appropriate in front setback areas, carports shall be open in style and allow an unobstructed view of the dwelling from the street.
O3.3 Car parking facilities that do not unduly impact the presentation of the dwelling to the streetscape.	C3.3 Garages and carports must match the existing dwellings' predominant colour, scale and materials and must be complementary and subservient to the dwelling.
	C3.4 Carports and garages forward of the dwelling or within the front setback area shall have a maximum wall height of 2.7 metres.
	C3.5 Carports and garages located within front setback areas shall have a maximum width of 5.5 metres (internal) or one-third the frontage of the lot, whichever is the lesser.

CITY OF VINCENT CHARACTER STREET GUIDELINES - ORANGE AVENUE & HOPE STREET, PERTH

4. General building design	
<i>New Local Housing Objectives as per Clause 7.3.1(b) of the Residential Design Codes</i>	<i>Criteria deemed to satisfy Local Housing Objectives O7.1-O7.5</i>
O4.1 New development is sympathetic to and complements the character of the existing dwellings within the streetscape.	C4.1 The built form of any new dwellings shall complement the style, scale and form of the dwellings within the existing streetscape.
O4.2 New development shall ensure that unsympathetic contrasts in scale, mass and materials are avoided.	C4.2 The materials of any new dwellings as viewed from the street shall be consistent with the prevailing materials of the streetscape.
O4.3 Additions visible from the street shall be compatible with and respectful of the existing dwelling and the predominant character of the existing streetscape.	C4.3 Additions to an existing dwelling when viewed from the street shall complement the architectural style, form, colour and materials of the existing dwelling. In the case that the existing dwelling is not an original dwelling, additions shall complement the architectural style, form, colour and materials of the prevailing streetscape.
O4.4 The roof of new dwellings is to be consistent with the predominant roof form in the existing streetscape in terms of scale and pitch.	C4.4 The floor levels of new dwellings shall match or mediate between the floor levels of dwellings on either side of the proposed dwelling.
O4.5 Each street facing window should have a style that suits the predominant character of the street and the architectural style of the proposed dwelling.	C4.5 The roof pitch of new dwellings or upper storey additions is to be between 30 degrees and 40 degrees.
	C4.6 Street facing windows include inner sections with a height of at least 1.6 times their width.
	C4.7 Windows to the front façade of an upper storey addition shall reflect the shape and configuration of the original dwellings' windows when viewed from the primary street.

COMPARISON BETWEEN PROPOSED GUIDELINES AND EXISTING DEVELOPMENT CRITERIA

PROPOSED

EXISTING (BP+RCODS)

<p>PRIMARY STREET SETBACKS - DEEMED TO COMPLY</p> <p>Ground floor primary street setbacks to be an average of the two directly adjoining properties on either side of the proposed development.</p> <p>Walls on upper floors setback a minimum of 4 metres behind the ground floor predominant building line (excluding any porch or verandah), as determined by the City.</p>	<p><i>The primary street setback is to be calculated by averaging the setback of the five adjoining properties, either side of the proposed development</i></p> <p><i>Walls on upper floors setback a minimum of 2 metres behind the ground floor predominant building line (ex. any porch or verandah), as determined by the City</i></p>
<p>PRIMARY STREET SETBACKS - LOCAL HOUSING OBJECTIVES</p> <p>The setbacks of dwellings should reflect the predominant street-scape pattern and be consistent with adjacent properties.</p> <p>First floor development is to be adequately setback to maintain the predominant single storey appearance of the streetscape.</p>	<p><i>Development which incorporates predominant features of the street-scape</i></p> <p><i>Development which clearly distinguishes all upper floors from lower storeys to clearly distinguish parts of the dwelling</i></p> <p><i>Development which minimises the visual bulk of the buildings through articulation of larger wall lengths and the stepping back of upper storeys walls</i></p>
<p>BUILDING HEIGHT - DEEMED TO COMPLY</p> <p>Loft additions must be contained wholly within the roof space and shall not result in a visible change to the dwellings appearance from the street</p>	
<p>BUILDING HEIGHT - LOCAL HOUSING OBJECTIVES</p> <p>The wall height of new dwellings, particularly, the portions in view from the street, should approximate the street's typical wall height to avoid an under scaled squat appearance.</p>	<p><i>Buildings which respond and contribute to neighbourhood context and streetscape character, and do not overwhelm or dominate existing development.</i></p> <p><i>Design which is complementary to existing developments</i></p> <p><i>Development that considers and responds to the natural features of the site and requires minimal excavation/fill.</i></p> <p><i>Design which minimises overlooking and overshadowing</i></p> <p><i>Development which preserves and enhances the visual character of the existing streetscape by considering building bulk and scale.</i></p>

COMPARISON BETWEEN PROPOSED GUIDELINES AND EXISTING DEVELOPMENT CRITERIA

PROPOSED

EXISTING

GARAGES AND CARPORTS - DEEMED TO COMPLY

Carports may be considered in front setback areas but only where no alternative location exists and a minimum setback of 1.5m from the primary street is maintained. Such carports shall not be fitted with any style of roller or tilt up panel door.

Where carports are considered appropriate in front setback areas, carports shall be open in style and allow an unobstructed view of the dwelling from the street.

Garages and carports must match the existing dwellings' predominant colour, scale and materials and must be complementary and subservient to the dwelling.

Carports and garages forward of the dwelling or within the front setback area shall have a maximum wall height of 2.7 metres.

Carports and garages located within front setback areas shall have a maximum width of 5.5 metres (internal) or one-third the frontage of the lot, whichever is the lesser.

Garages and carports must match the existing dwellings predominant colour, scale and materials and must be complementary and subservient to the dwelling.

Carports must provide an unobstructed view to major openings of the dwelling from the street. Gates or doors to carports are required to be visually permeable.

Carports shall allow light and ventilation to the major openings of the dwelling.

The total width of any carport within the street setback area is not to exceed 50 per cent of the frontage (including strata lots) of the lot or six metres whichever is the lesser.

GARAGES AND CARPORTS - LOCAL HOUSING OBJECTIVES

Carports and garages should be located so as to maintain the absence of car parking facilities within the streetscape.

Car parking facilities located within front setback areas should ensure that the predominant character elements of the dwelling are visible and unobstructed.

Car parking facilities that do not unduly impact the presentation of the dwelling to the streetscape.

The setting back of carports and garages to maintain clear sight lines along the street and not to detract from the streetscape or appearance of dwellings; or dominate views of dwellings from the street and vice versa.

Development which preserves and enhances the visual character of the existing streetscape by considering bulk, scale, setbacks and design.

COMPARISON BETWEEN PROPOSED GUIDELINES AND EXISTING DEVELOPMENT CRITERIA

PROPOSED

EXISTING

GENERAL BUILDING DESIGNS - LOCAL HOUSING OBJECTIVES

New development is sympathetic to and complements the character of the existing dwellings within the streetscape.

New development shall ensure that unsympathetic contrasts in scale, mass and materials are avoided.

Additions visible from the street shall be compatible with and respectful of the existing dwelling and the predominant character of the existing streetscape.

The roof of new dwellings is to be consistent with the predominant roof form in the existing streetscape in terms of scale and pitch.

Each street facing window should have a style that suits the predominant character of the street and architectural style of the proposed dwelling.

An Urban Design Study is to be submitted with the application for development approval and must consider all of the following local housing objectives:

Appropriate use of a variety of materials and finishes that complement elements of the existing local character whilst avoiding the use of faux (made as imitation, fake or false) materials.

Articulation that use architectural elements in addition to setbacks to reduce its impact on adjoining properties and improves the amenity of adjoining properties and the streetscape.

Fire boosters, mail boxes and external fixtures that are integrated in the early design stage and located to minimise the impact on the public realm.

Development that achieves visual interation with the vehicle and pedestrian approaches.

Development which integrates and/or acknowledges the design elements and character of the streetscape identified in the Urban Design Study.

Development which incorporates the design elements of the predominant streetscape character of the urban design study area.

Development on corner sites that is designed to express significance and frame the corner to define the built form and give a strong edge to the public realm.

Development expressed with strong visual elements that integrate with all street frontages and right of ways.

Create cohesion of all street frontages and contribute to a comfortable pedestrian environment by addressing each frontage with passive surveillance and safe sight lines.

Development shall integrate with adjoining public spaces by including visual surveillance or clearly visible entrances and paths directly onto the public space.

Emphasize vertical articulation to break up building mass and height-light street level uses and details.

Development designed to be adaptive and cater for changing uses over time within the relevant zone.

High quality durable materials and textures used at street level and upper levels which express the architectural style of the surrounding context.

NOTE: The proposed Character Guidelines includes new deemed-to-comply criteria, not present within the existing planning framework.

COMPARISON BETWEEN PROPOSED GUIDELINES AND EXISTING DEVELOPMENT CRITERIA

PROPOSED - NEW

GENERAL BUILDING DESIGNS - NEW PROVISIONS TO MEET LOCAL HOUSING OBJECTIVES

The built form of any new dwellings shall complement the style, scale and form of the dwellings within the existing streetscape.

The materials of any new dwellings as viewed from the street shall be consistent with the prevailing materials of the streetscape.

Additions to an existing dwelling when viewed from the street shall complement the architectural style, form, colour and materials of the existing dwelling. In the case that the dwelling is not an original dwelling, additions shall complement the architectural style, form, colour and materials of the prevailing streetscape.

The floor levels of new dwellings shall match or mediate between the floor levels of dwellings on either side of the proposed dwelling.

The roof pitch of new dwellings or upper storey additions is to be between 30 degrees and 40 degrees.

Street facing windows include inner sections with a height of at least 1.6 times their width.

Windows to the front facade of an upper storey addition shall reflect the shape and configuration of the original dwellings' windows when viewed from the primary street.