

DESIGNED BY:

 parkingandtrafficconsultants.com
 wayfindingforum.com
 tel +612 9968 1844 fax +612 9968 1755
 suite 11, 599 military road, mosman nsw 2088

NOTES:
 -

PROJECT:
 CITY OF VINCENT
 WAYFINDING STRATEGY

DRAWING TITLE:
 OVERALL LAYOUT

CLIENT:	CITY OF VINCENT	
DRG. #:	OVCP1	
VERSION #:	1	SCALE: 1:12000
PROJECT #:	P6-596	DATE: 09/05/12



DESIGNED BY:

 parkingandtrafficconsultants.com
 wayfindingforum.com
 tel +612 9968 1844 fax +612 9968 1755
 suite 11, 599 military road, mosman nsw 2088


NOTES:
 -

PROJECT:
 CITY OF VINCENT
 WAYFINDING STRATEGY

DRAWING TITLE:
 LEEDERVILLE
 TOWN CENTRE
 OVERVIEW

CLIENT:	CITY OF VINCENT		
DRG. #:	LETC1		
VERSION #:	1	SCALE:	1:2500
PROJECT #:	P6-596	DATE:	10/05/12



DESIGNED BY:

 parkingandtrafficconsultants.com
 wayfindingforum.com
 tel +612 9968 1844 fax +612 9968 1755
 suite 11, 599 military road, mosman nsw 2088


NOTES:
 -

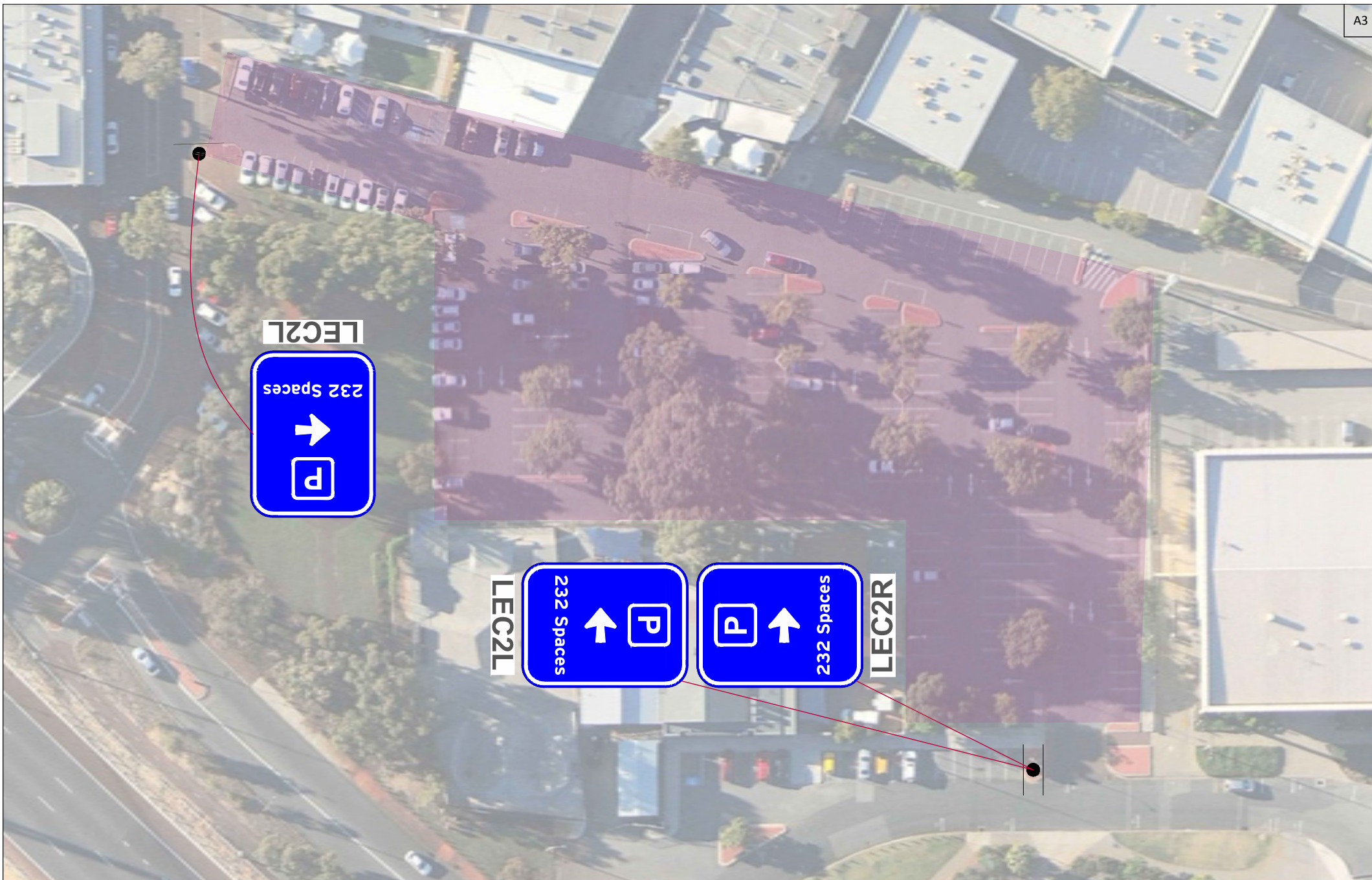
PROJECT:
 CITY OF VINCENT
 WAYFINDING STRATEGY


DRAWING TITLE:
 LEEDERVILLE
 TOWN CENTRE

CLIENT:	CITY OF VINCENT	
DRG. #:	LECP1	
VERSION #:	1	SCALE: 1:2500
PROJECT #:	P6-596	DATE: 01/05/12



DESIGNED BY:  parkingandtrafficconsultants.com wayfindingforum.com tel +612 9968 1844 fax +612 9968 1755 suite 11, 599 military road, mosman nsw 2088	NOTES: -	PROJECT: CITY OF VINCENT WAYFINDING STRATEGY	DRAWING TITLE: THE AVENUE CAR PARK	CLIENT: CITY OF VINCENT	
				DRG. #: LECP2	
				VERSION #: 1	SCALE: 1:1000
				PROJECT #: P6-596	DATE: 01/05/12



DESIGNED BY:  parkingandtrafficconsultants.com wayfindingforum.com tel +612 9968 1844 fax +612 9968 1755 suite 11, 599 military road, mosman nsw 2088	NOTES: -	PROJECT: CITY OF VINCENT WAYFINDING STRATEGY	DRAWING TITLE: FRAME COURT CAR PARK		CLIENT: CITY OF VINCENT		
					DRG. #: LECP3		
			VERSION #: 1	SCALE: 1:500			
			PROJECT #: P6-596	DATE: 01/05/12			



DESIGNED BY:

 parkingandtrafficconsultants.com
 wayfindingforum.com
 tel +612 9968 1844 fax +612 9968 1755
 suite 11, 599 military road, mosman nsw 2088


NOTES:
 -

PROJECT:
 CITY OF VINCENT
 WAYFINDING STRATEGY


DRAWING TITLE:
 LOFTUS CENTRE CAR PARK

CLIENT:	CITY OF VINCENT		
DRG. #:	LECP4		
VERSION #:	1	SCALE:	1:1000
PROJECT #:	P6-596	DATE:	01/05/12




DESIGNED BY:  parkingandtrafficconsultants.com wayfindingforum.com tel +612 9968 1844 fax +612 9968 1755 suite 11, 599 military road, mosman nsw 2088	NOTES: -	PROJECT: CITY OF VINCENT WAYFINDING STRATEGY	DRAWING TITLE: MOUNT HAWTHORN TOWN CENTRE OVERVIEW		CLIENT: CITY OF VINCENT
					DRG. #: MHTC1
			VERSION #: 1	SCALE: 1:2000	
			PROJECT #: P6-596	DATE: 10/05/12	



DESIGNED BY:  parkingandtrafficconsultants.com wayfindingforum.com tel +612 9968 1844 fax +612 9968 1755 suite 11, 599 military road, mosman nsw 2088	NOTES: -	PROJECT: CITY OF VINCENT WAYFINDING STRATEGY	DRAWING TITLE: MOUNT HAWTHORN TOWN CENTRE	CLIENT: CITY OF VINCENT	
				DRG. #: MHCP1	
				VERSION #: 1	SCALE: 1:2000
				PROJECT #: P6-596	DATE: 26/04/12



DESIGNED BY:  parkingandtrafficconsultants.com wayfindingforum.com tel +612 9968 1844 fax +612 9968 1755 suite 11, 599 military road, mosman nsw 2088	NOTES: -	PROJECT: CITY OF VINCENT WAYFINDING STRATEGY	DRAWING TITLE: OXFORD STREET CAR PARK		CLIENT: CITY OF VINCENT
					DRG. #: MHCP2
			VERSION #: 1	SCALE: 1:500	
			PROJECT #: P6-596	DATE: 26/04/12	